



Doodle Page Digital Download

This PDF file contains 1 (one) Doodle Page. The PDF has been put together to give you options when it comes to printing. Pages and patterns that are larger than 8½x11 have been provided in two formats:



1) Full Size

If you would like to have a full size print out, take the full size pages to your local print shop and they can print it for you. All full size Doodle Pages are 11x17



2) Tiled

The tiled pages give you the option of printing the full sized Doodle Pages at home. You print the tiled pages and then assemble them to make the larger patterns.

The Doodle Page PDF files are typically laid out like this:

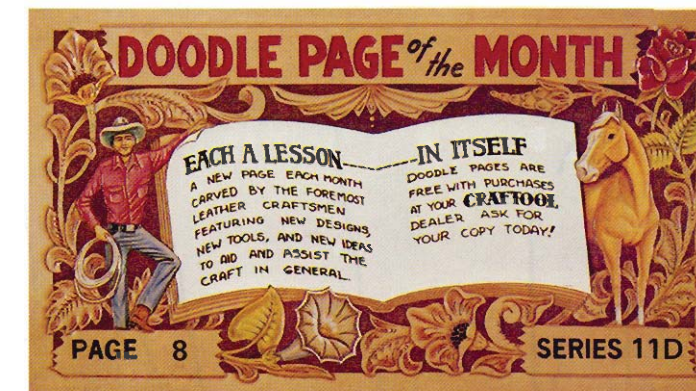
Front – full sized, front – tiled, back – full sized, back – tiled

(Some Doodle Pages do not have backs)

Please note: When printing on a home printer, the edges may get cut off. To avoid this, make sure “Page Scaling” is set to “Shrink to Printable Area” in the Adobe Reader print dialogue box. This will decrease the size of the Doodle Page a very small amount.



You may take this PDF file to your local print shop to have the full-size pages printed for your own personal use.



WOODLAND PREACHER BY CAROL GEHRMAN

The Jack-In-The-Pulpit has fascinated me since early childhood. We lived in the woods and I can remember my mother showing me the magical little plant when I was 4.

I wanted to do something different for this Doodle Page, perhaps introduce some to a "new plant" they did not know existed.

I learned a few things when doing research in preparation for my rendition.

Jack-In-The-Pulpit is an American wild flower that grows in moist woodlands. It grows from 1 to 3 feet high from Nova Scotia south to the Gulf States and as far west as Minnesota. The plant blooms from April to June. Indians gathered the turnip-like roots for a tasteless but nourishing food. Cough medicine is sometimes made from the strong bitter juices. Bright red berries form in the late summer.

INSTRUCTIONS FOR JACK-IN-THE-PULPIT

Trace and cut solid lines. Bevel and use P220 and P210 to make the "bark", digging ends in for deep indentations.

Trace leaves on another scrap of the same leather used for the picture. If it is too thick to use for leaves, skive it down to paper thin on edges. Pull and form the leaf after the center lines have been beveled in. Use stylus to vein all leaves.

The stem (jack) and pulp piece are cut separately from 1 to 2 ounce leather (see cutting patterns on back of page). It is easiest if the stripes, etc. are painted on the pulp before it is formed. After painting, roll back all edges on top part, bring sides together, form and glue.



F901

V715

B205

B198

B701

F976

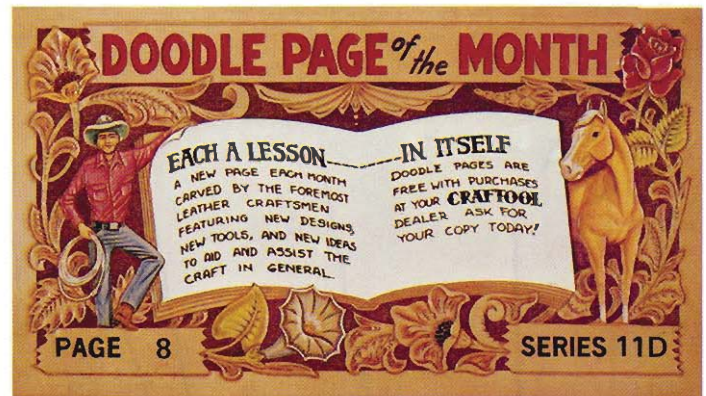
Pro-Petal

P220

Stylus

Modeling Tool
8034

P210



WOODLAND PREACHER BY CAROL GEHRMAN

The Jack-In-The-Pulpit has fascinated me since early childhood. We lived in the woods and I can remember my mother showing me the magical little plant when I was 4.

I wanted to do something different for this Doodle Page, perhaps introduce some to a "new plant" they did not know existed.

I learned a few things when doing research in preparation for my rendition.

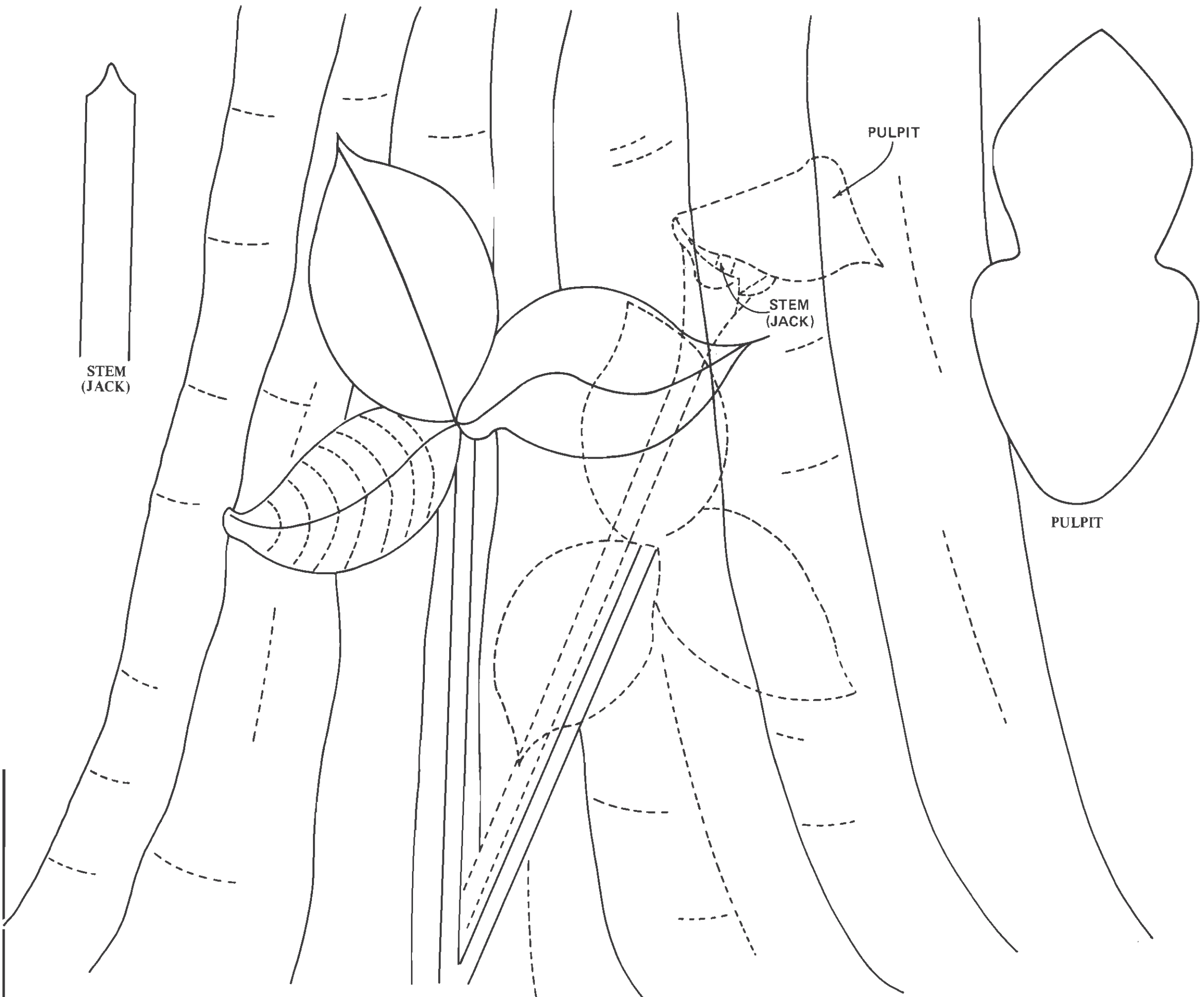
Jack-In-The-Pulpit is an American wild flower that grows in moist woodlands. It grows from 1 to 3 feet high from Nova Scotia south to the Gulf States and as far west as Minnesota. The plant blooms from April to June. Indians gathered the turnip-like roots for a tasteless but nourishing food. Cough medicine is sometimes made from the strong bitter juices. Bright red berries form in the late summer.

INSTRUCTIONS FOR JACK-IN-THE-PULPIT

Trace and cut solid lines. Bevel and use P220 and P210 to make the "bark", digging ends in for deep indentations.

Trace leaves on another scrap of the same leather used for the picture. If it is too thick to use for leaves, skive it down to paper thin on edges. Pull and form the leaf after the center lines have been beveled in. Use stylus to vein all leaves.

The stem (jack) and pulpit piece are cut separately from 1 to 2 ounce leather (see cutting patterns on back of page). It is easiest if the stripes, etc. are painted on the pulpit before it is formed. After painting, roll back all edges on top part, bring sides together, form and glue.



To make the stem (jack), strip cotton ends from a Q-tip and cover with leather stem piece. Paint finished stem (jack) reddish brown. Glue in center of pulpit, just above the indentation.

Color with your choice of leather dyes. Al Stohlmans "Coloring Leather" is an excellent source for information on all types of dyeing techniques. Note: One technique I enjoy is sponge dyeing because it eliminates a lot of background tooling and leaves a nice lace effect. Simply apply one color at a time with the edge of a sponge. In the picture, I used this technique on each side of the stump as well as along its base.

The Jack-In-The-Pulpit can be cut out (don't do the stump) and used on an old shingle or any weathered-wood one might choose.

Have Fun.

Carol

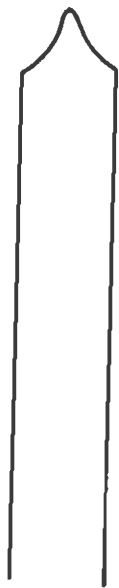


ABOUT THE AUTHOR

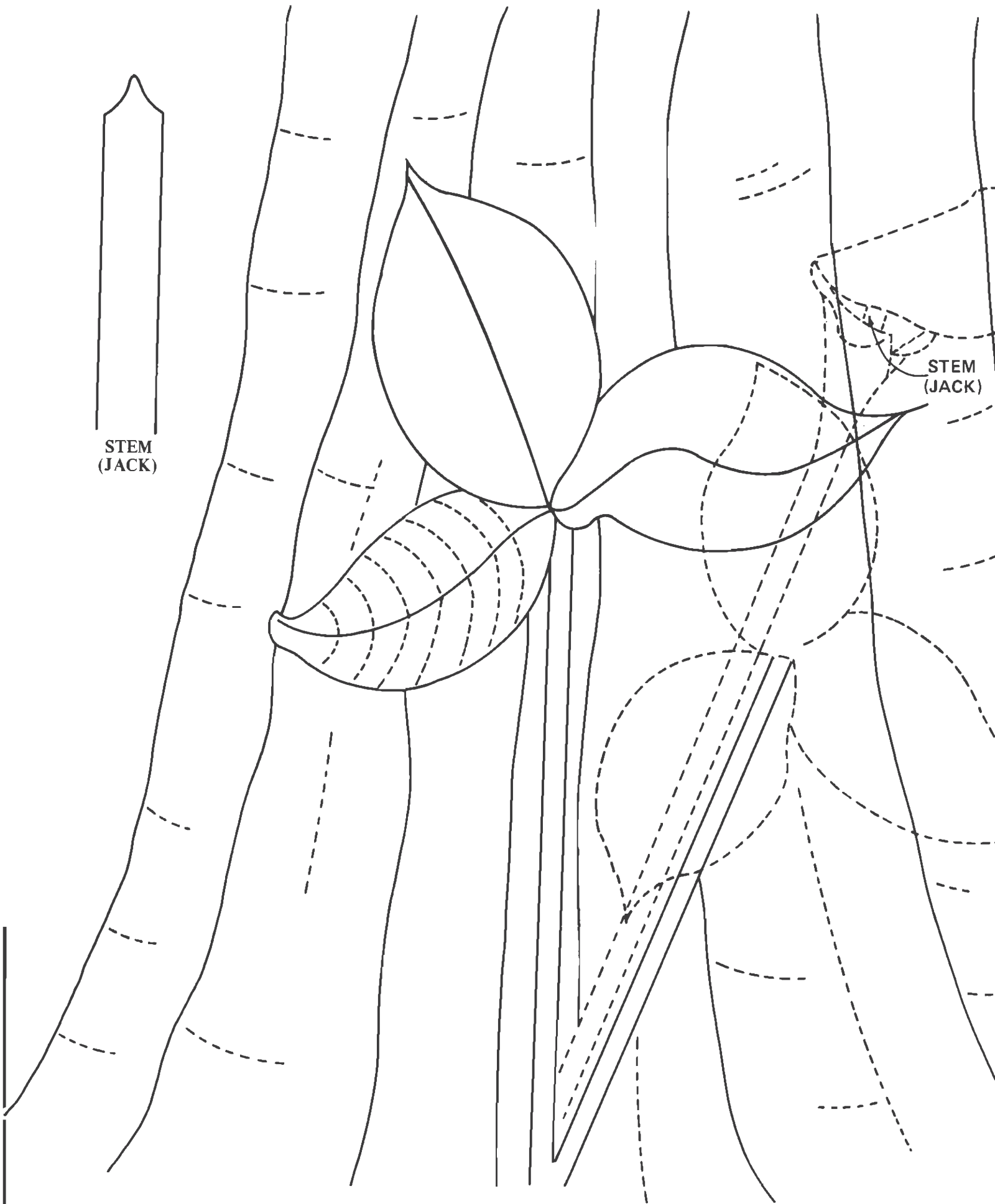
Carol Gehrman, from Eagan, Minn. has been doing leathercraft for the last 29 years. She has her own custom leather business. Some of the items she sells include tooled pictures, belts, buckles, pins and jewelry. When not working Carol likes to go camping, travel and also has an interest in the study of animals and people. Her other winning Doodles Pages are "Home" and "Orchid of the North".



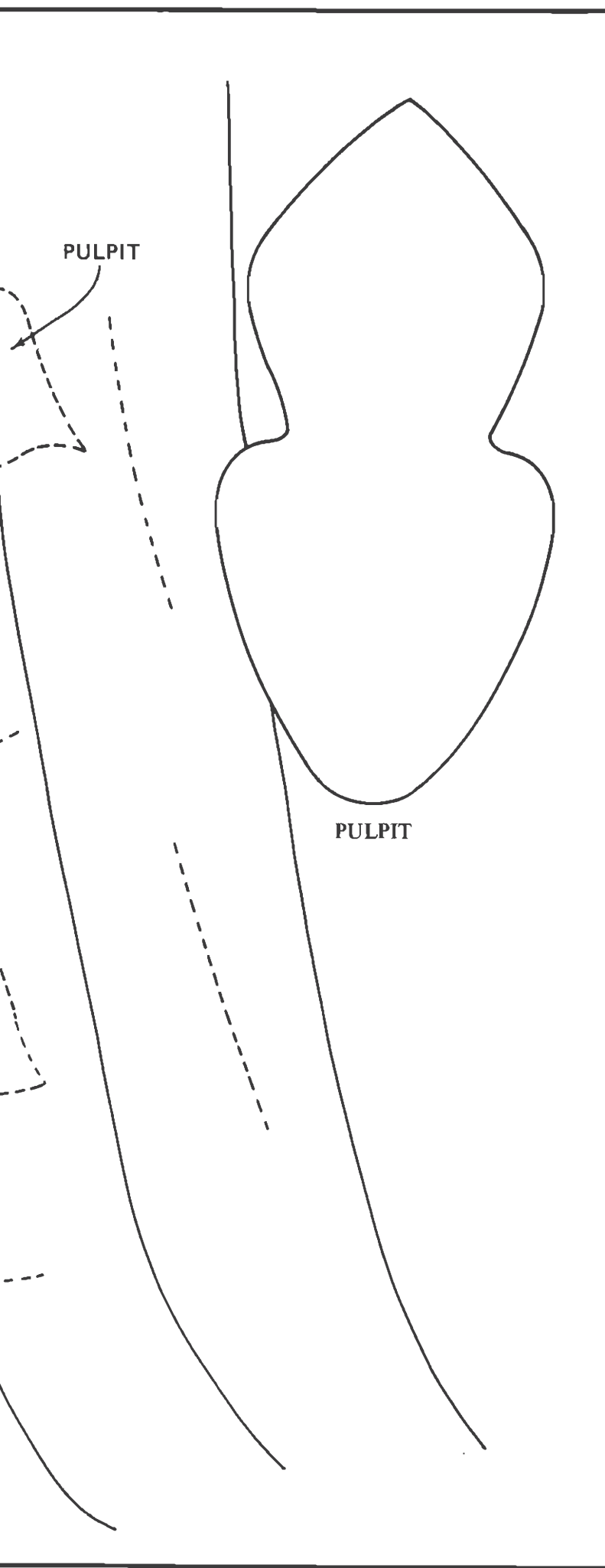
Distributed by Tandy Leather Co.
A Division of Tandycofts, Inc.
Fort Worth, Texas 76140



STEM
(JACK)



STEM
(JACK)



To make the stem (jack), strip cotton ends from a Q-tip and cover with leather stem piece. Paint finished stem (jack) reddish brown. Glue in center of pulp pit, just above the indentation.

Color with your choice of leather dyes. Al Stohlmans "Coloring Leather" is an excellent source for information on all types of dyeing techniques. Note: One technique I enjoy is sponge dyeing because it eliminates a lot of background tooling and leaves a nice lace effect. Simply apply one color at a time with the edge of a sponge. In the picture, I used this technique on each side of the stump as well as along its base.

The Jack-In-The-Pulpit can be cut out (don't do the stump) and used on an old shingle or any weathered-wood one might choose.

Have Fun.

Carol



ABOUT THE AUTHOR

Carol Gehrman, from Eagan, Minn. has been doing leathercraft for the last 29 years. She has her own custom leather business. Some of the items she sells include tooled pictures, belts, buckles, pins and jewelry. When not working Carol likes to go camping, travel and also has an interest in the study of animals and people. Her other winning Doodles Pages are "Home" and "Orchid of the North".



Distributed by Tandy Leather Co.
A Division of Tandycoats, Inc.
Fort Worth, Texas 76140