



Doodle Page Digital Download

This PDF file contains 1 (one) Doodle Page. The PDF has been put together to give you options when it comes to printing. Pages and patterns that are larger than 8½x11 have been provided in two formats:



1) Full Size

If you would like to have a full size print out, take the full size pages to your local print shop and they can print it for you. All full size Doodle Pages are 11x17



2) Tiled

The tiled pages give you the option of printing the full sized Doodle Pages at home. You print the tiled pages and then assemble them to make the larger patterns.

The Doodle Page PDF files are typically laid out like this:

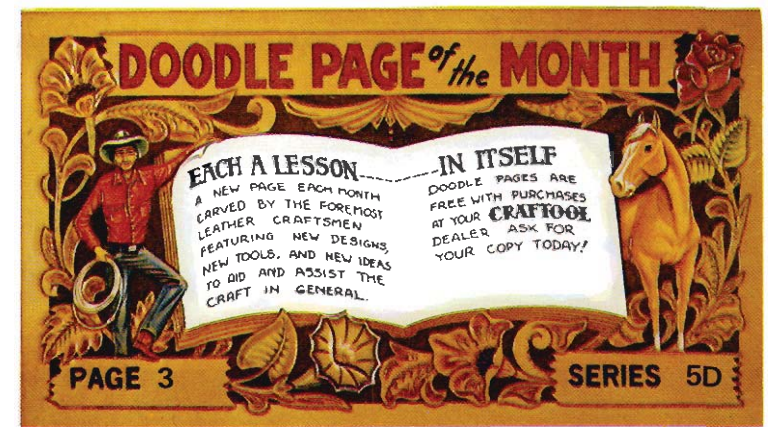
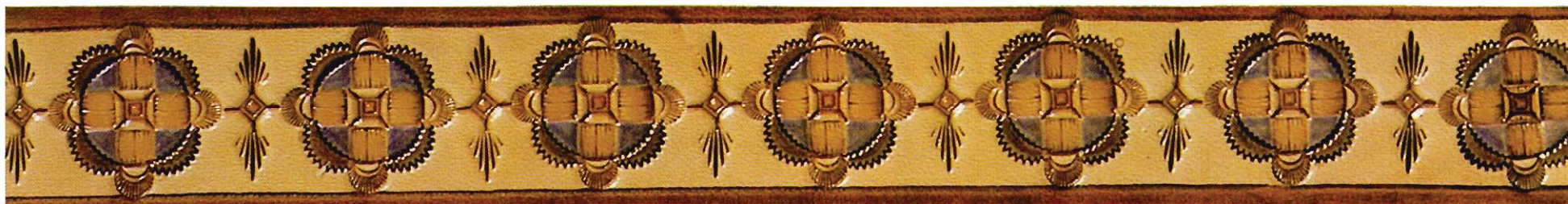
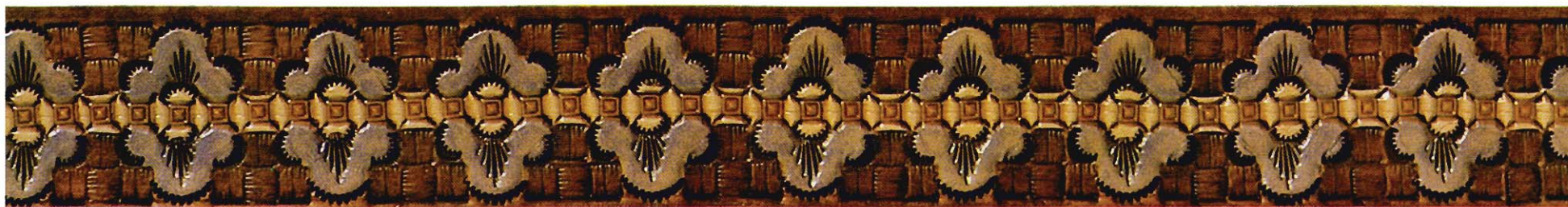
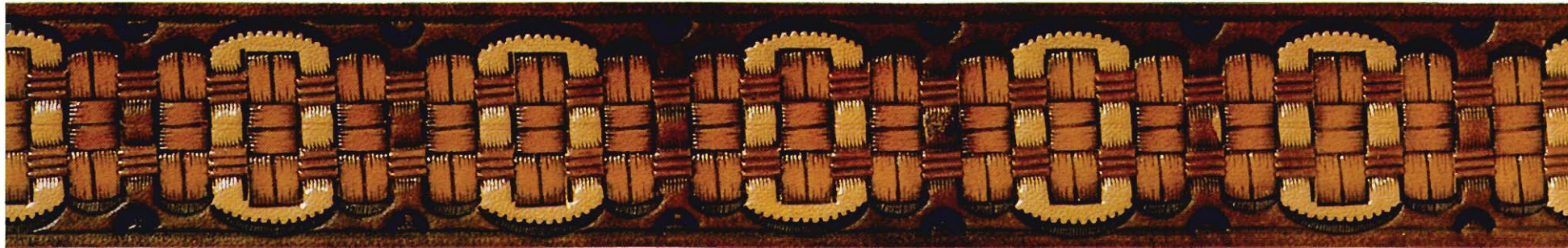
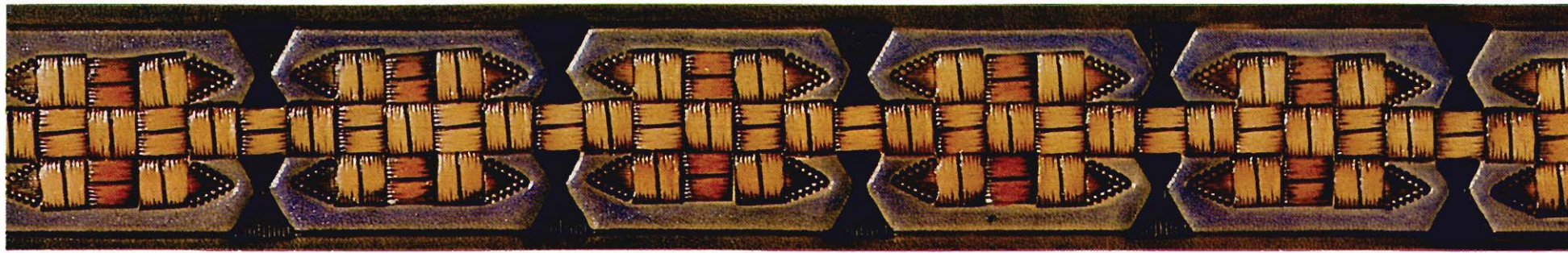
Front – full sized, front – tiled, back – full sized, back – tiled

(Some Doodle Pages do not have backs)

Please note: When printing on a home printer, the edges may get cut off. To avoid this, make sure “Page Scaling” is set to “Shrink to Printable Area” in the Adobe Reader print dialogue box. This will decrease the size of the Doodle Page a very small amount.



You may take this PDF file to your local print shop to have the full-size pages printed for your own personal use.



WEAVE A BELT WITH TWO NEW CRAFTOOLS by Jerry Jennings

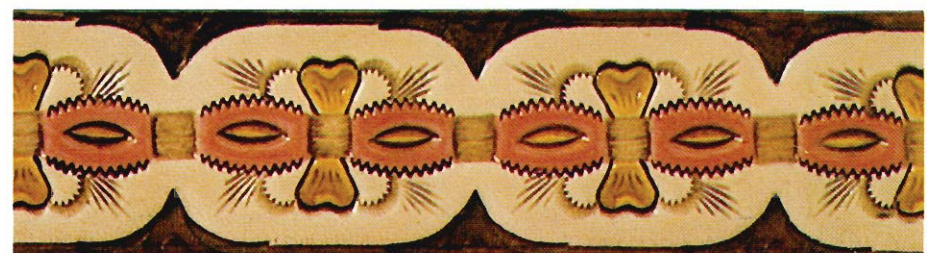
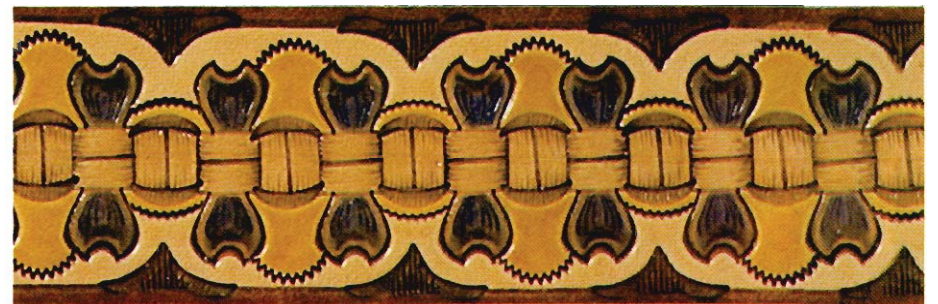
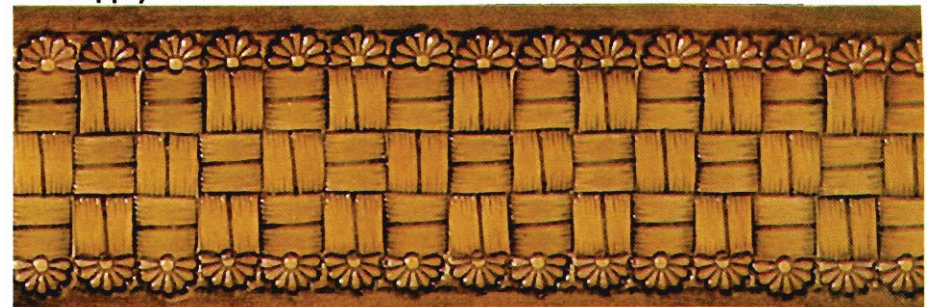
This month we are introducing two new Craftool stamps. Nos. X 506 and X 507.

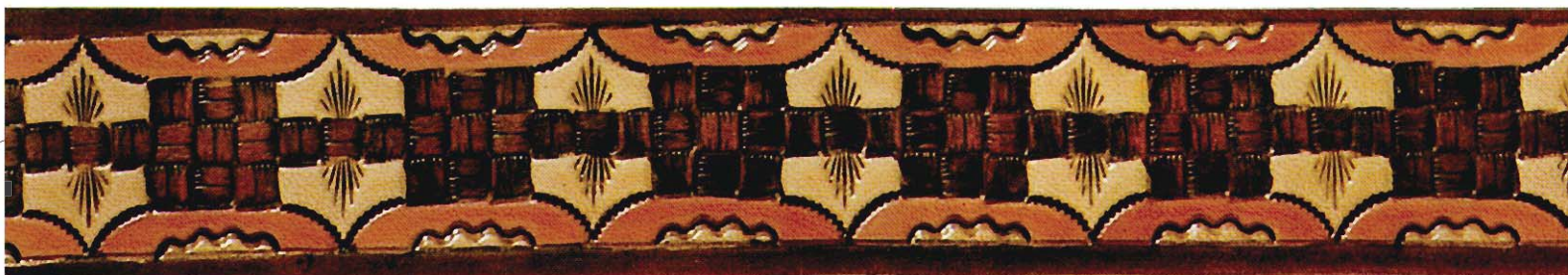
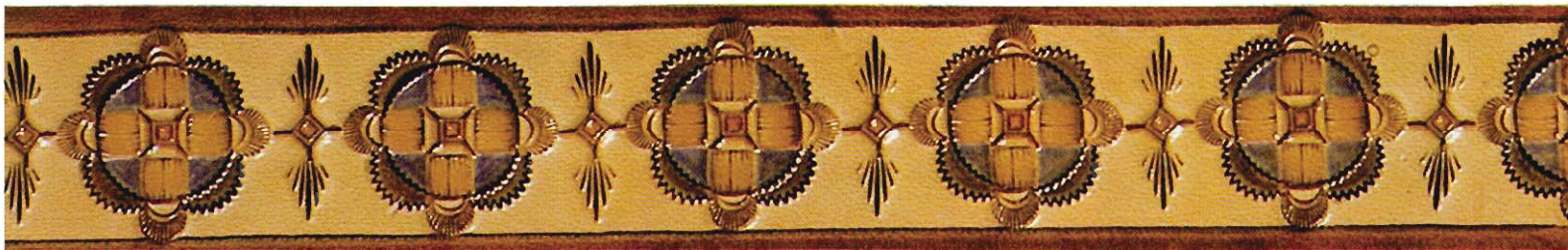
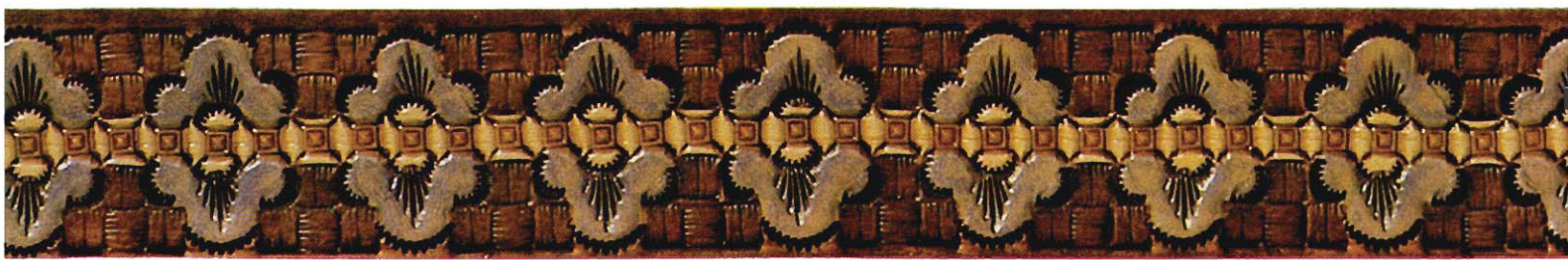
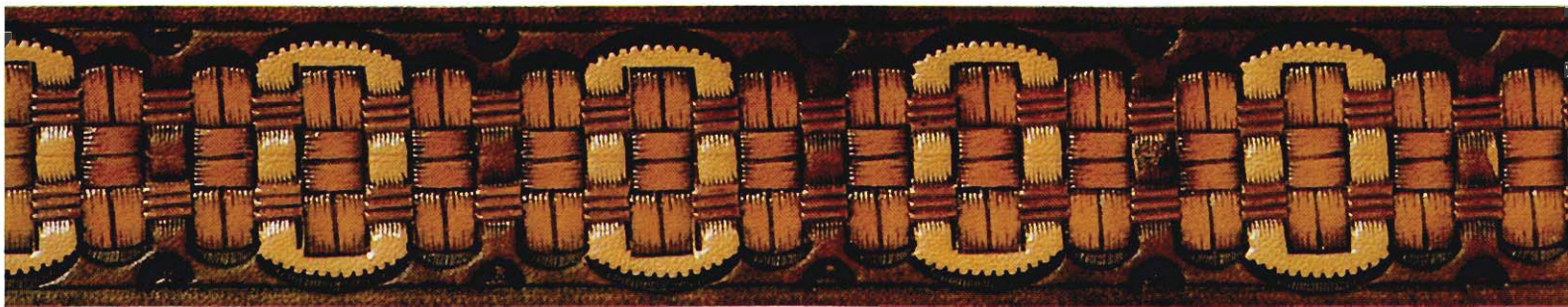
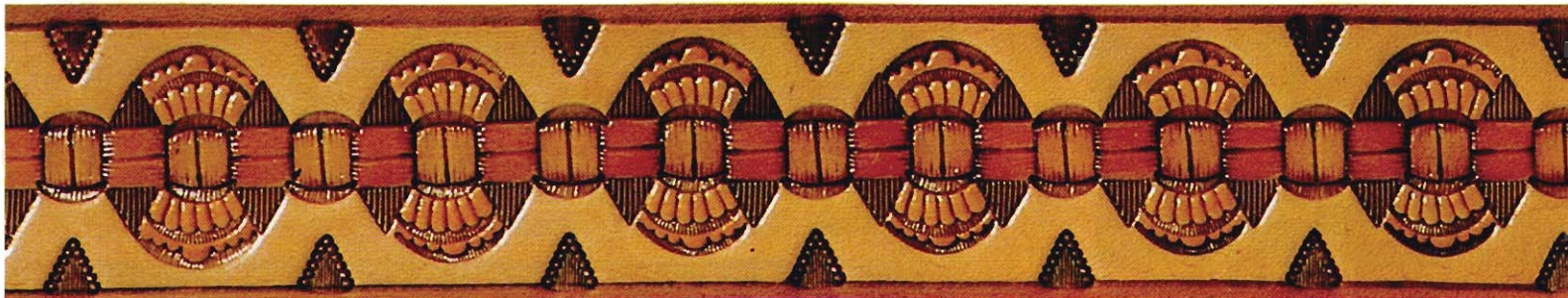
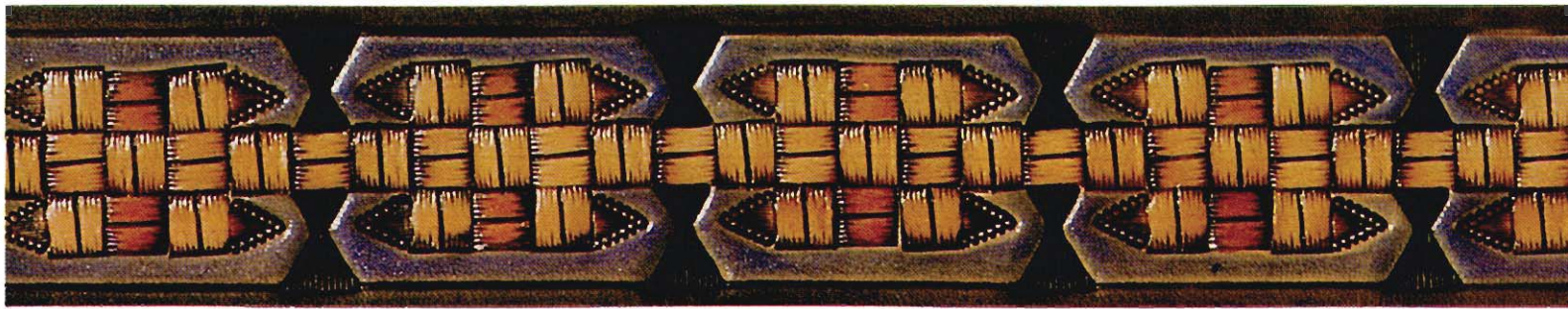
These stamps are designed to give the appearance of a woven surface. They can be used by themselves, to give a woven appearance to the entire project or each stamp can be used in many different configurations.

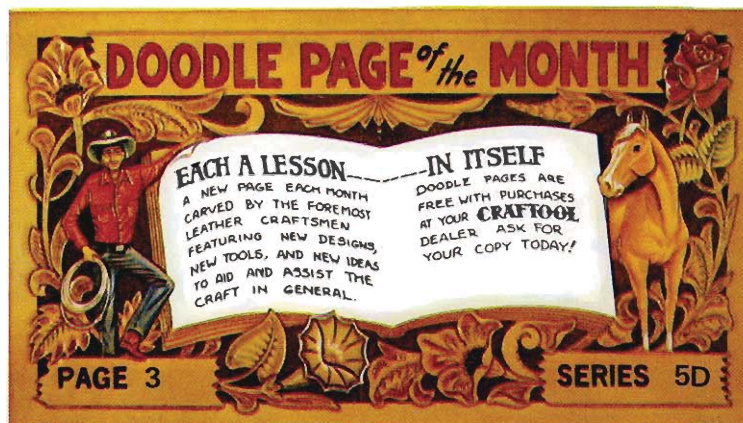
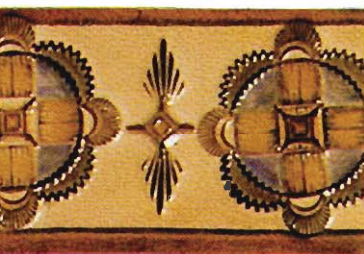
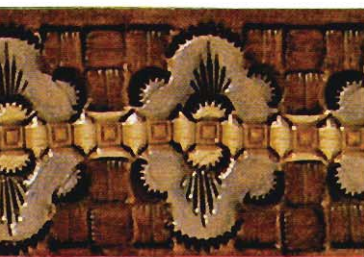
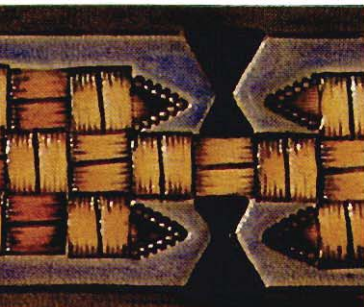
Combine these two new stamps with a few of the many Craftool stamps available and you have a fantastic variety of design possibilities.

INSTRUCTIONS FOR DYEING AND FINISHING BELTS

1. Apply dye and allow to dry.
2. Apply a resist to dyed areas and also to those areas you wish to remain natural leather color. Let resist dry, then apply a second coat to insure complete coverage. Let second coat dry.
3. Apply antique and let dry.
4. Apply finish.







WEAVE A BELT WITH TWO NEW CRAFTOOLS by Jerry Jennings

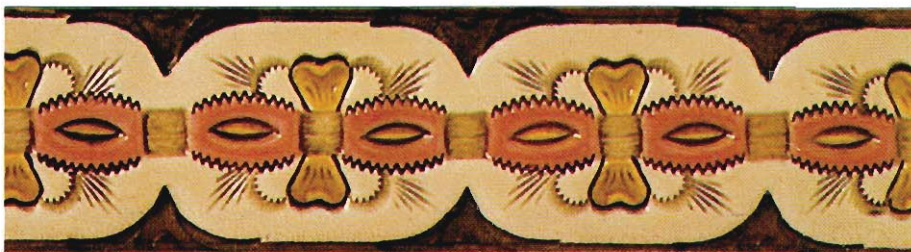
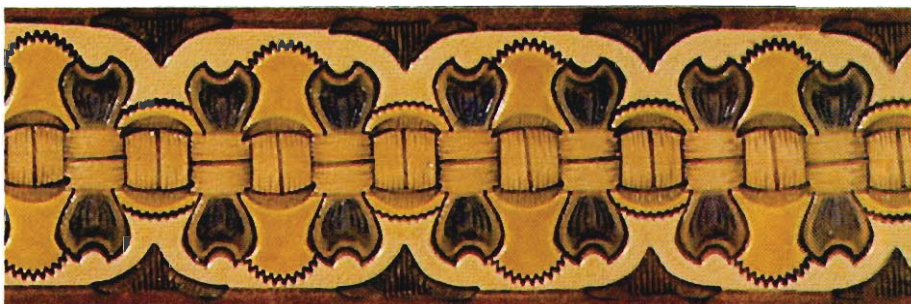
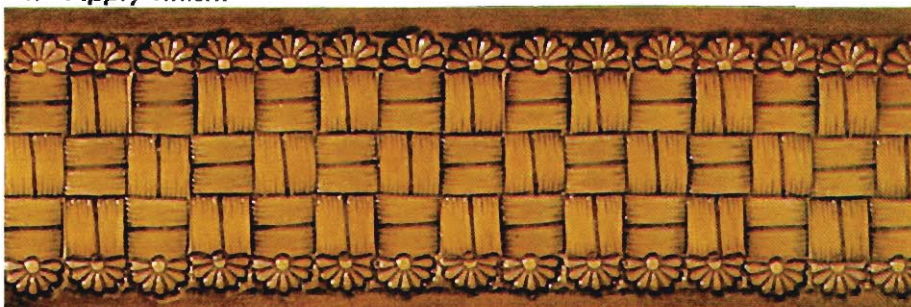
This month we are introducing two new Crafttool stamps. Nos. X 506 and X 507.

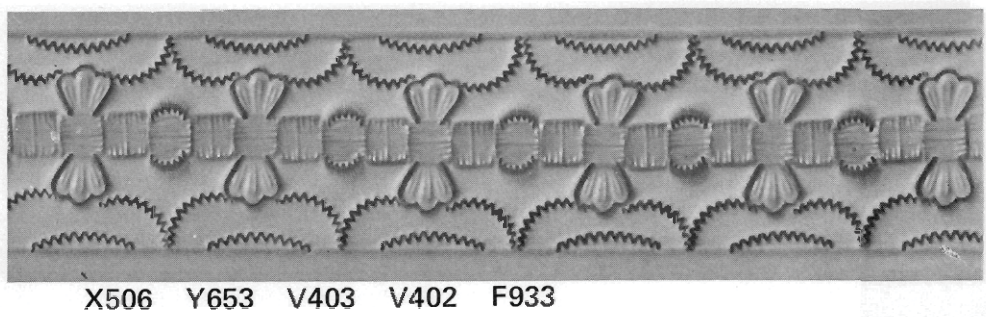
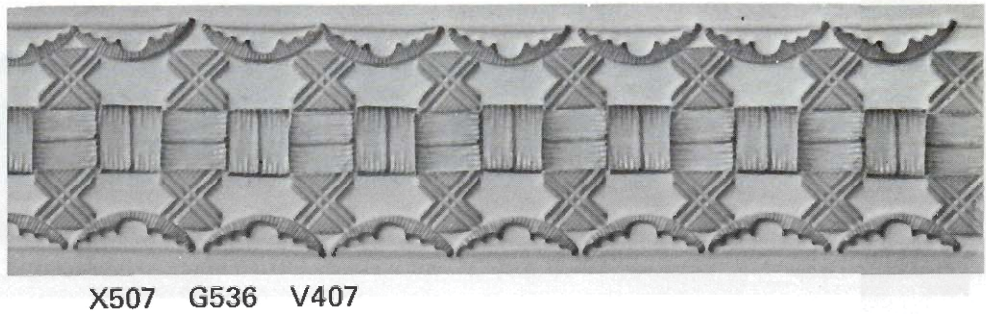
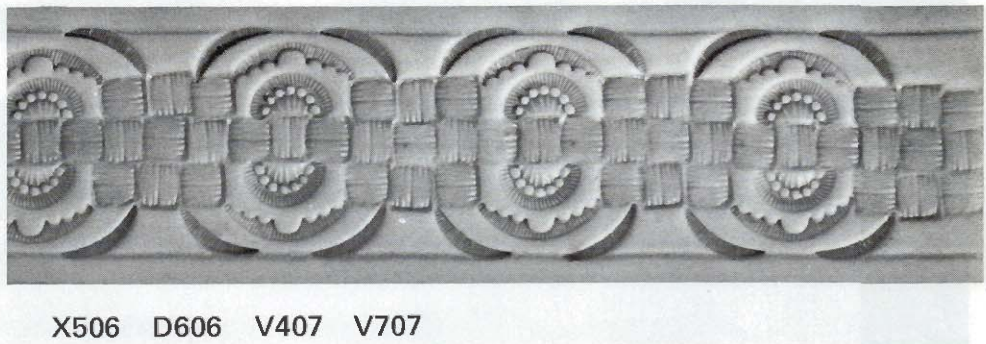
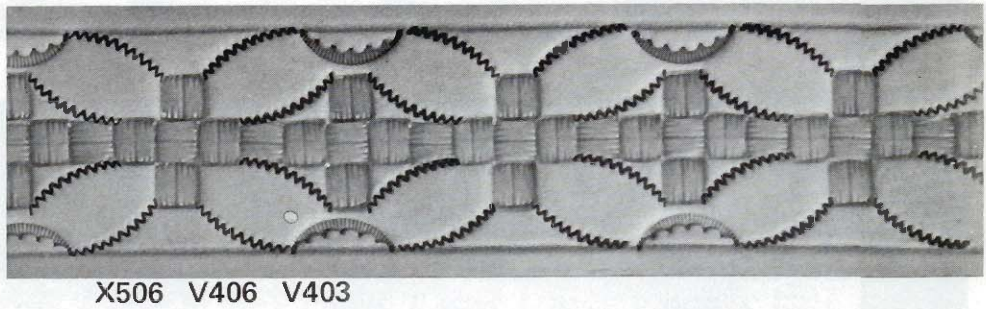
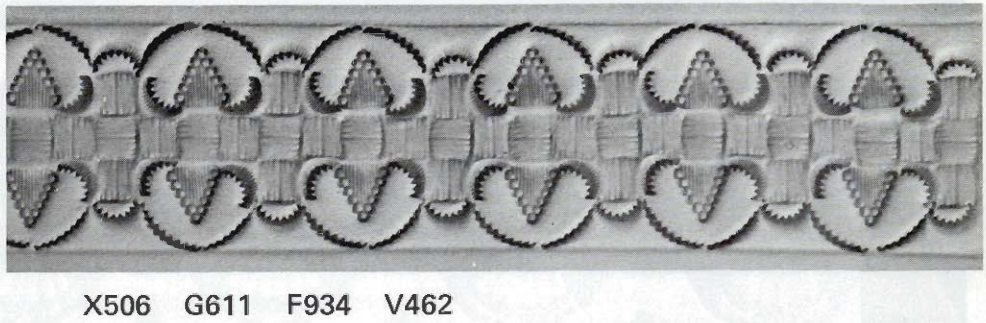
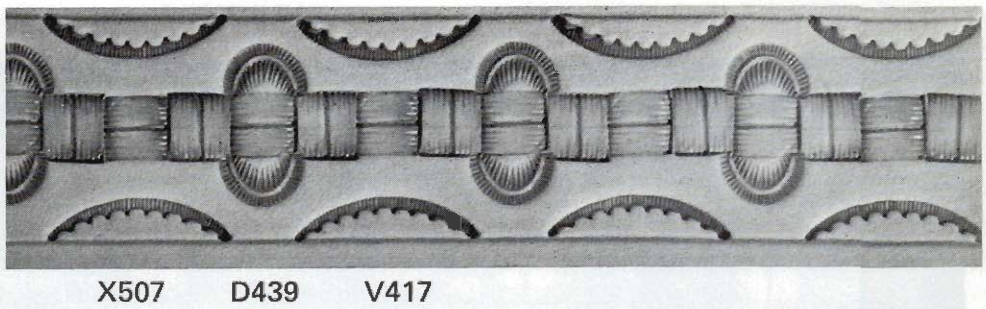
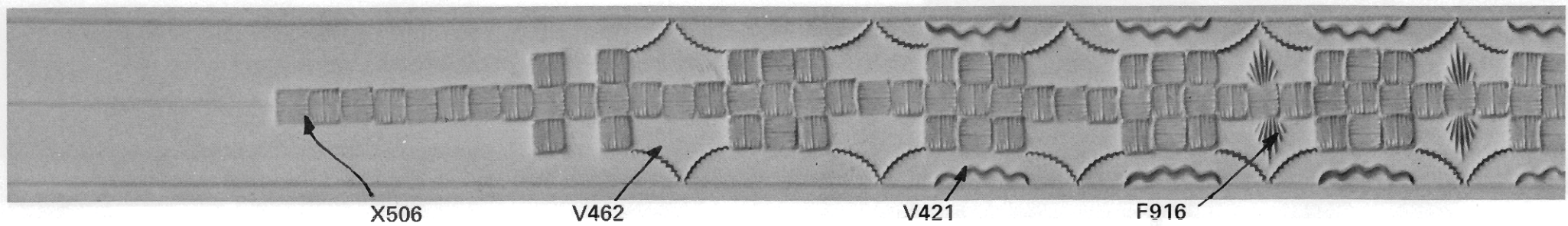
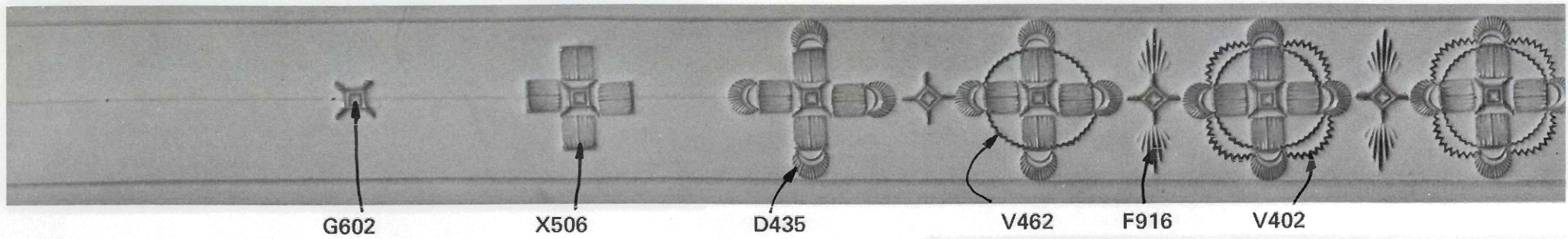
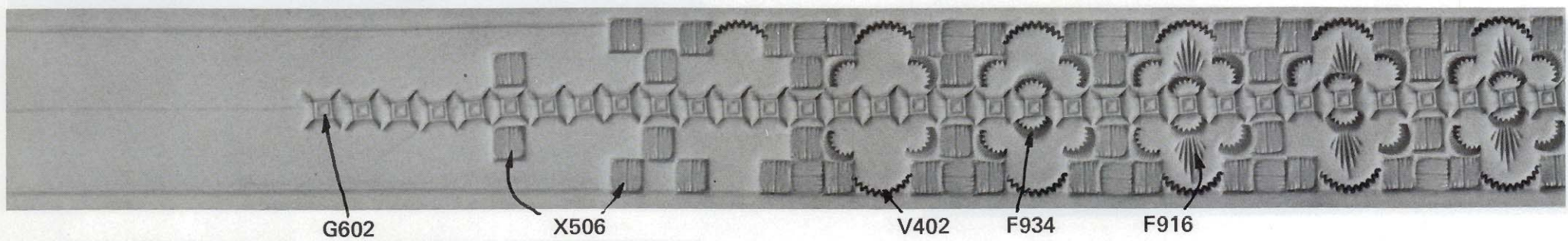
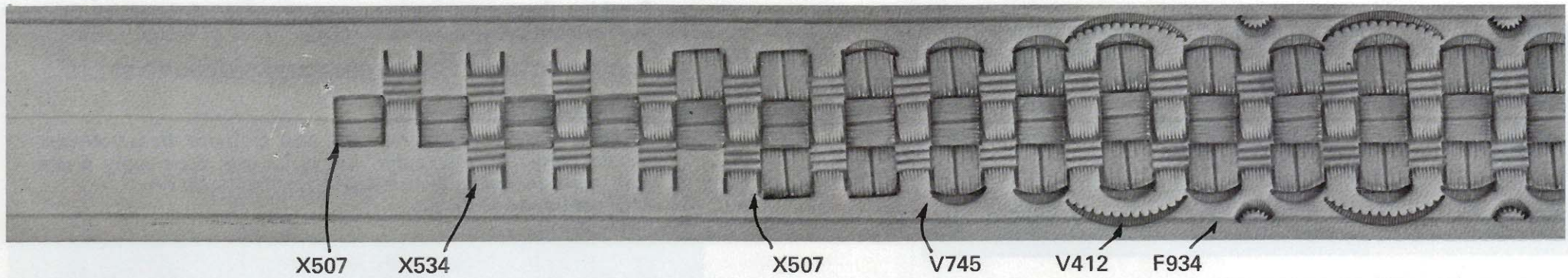
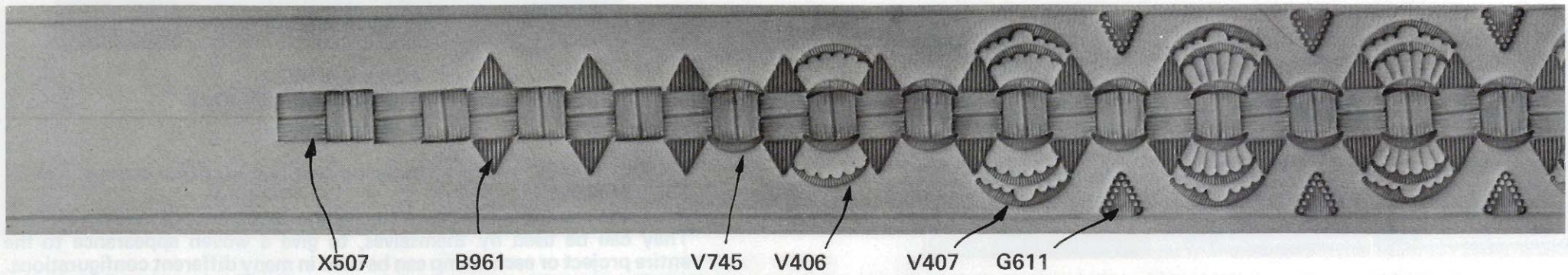
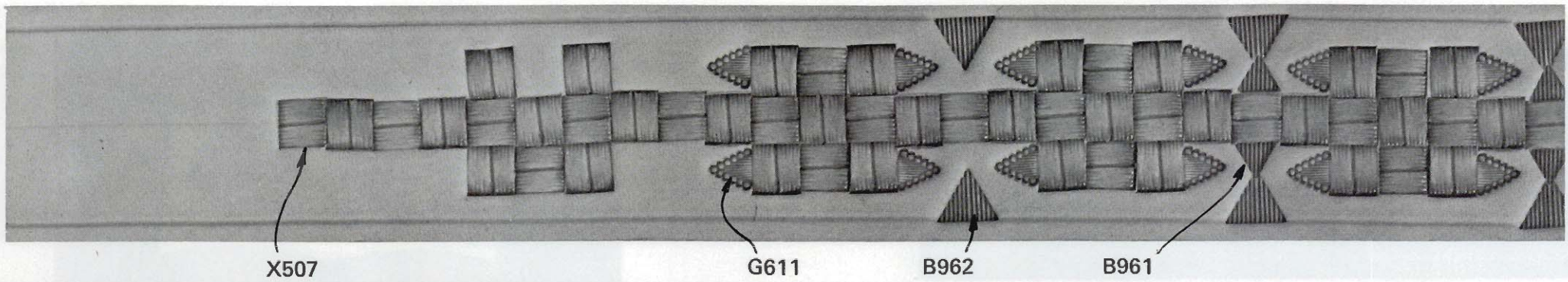
These stamps are designed to give the appearance of a woven surface. They can be used by themselves, to give a woven appearance to the entire project or each stamp can be used in many different configurations.

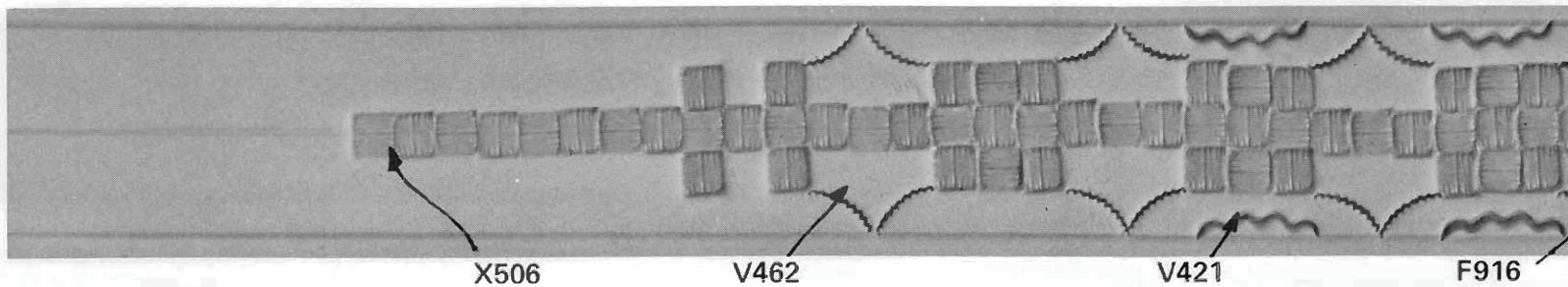
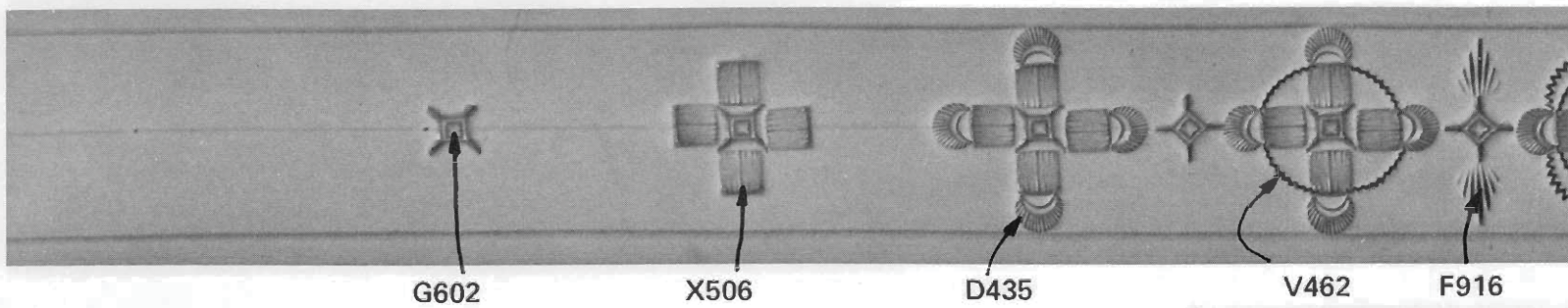
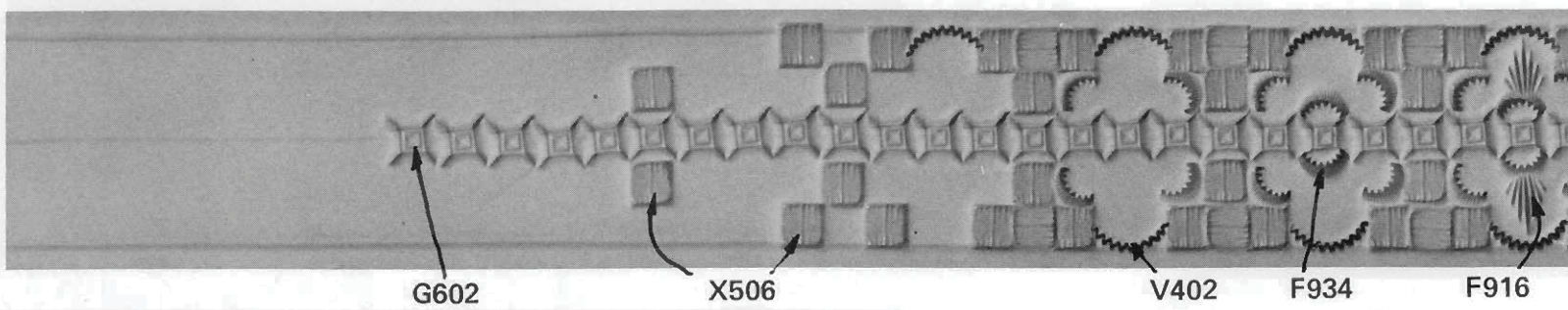
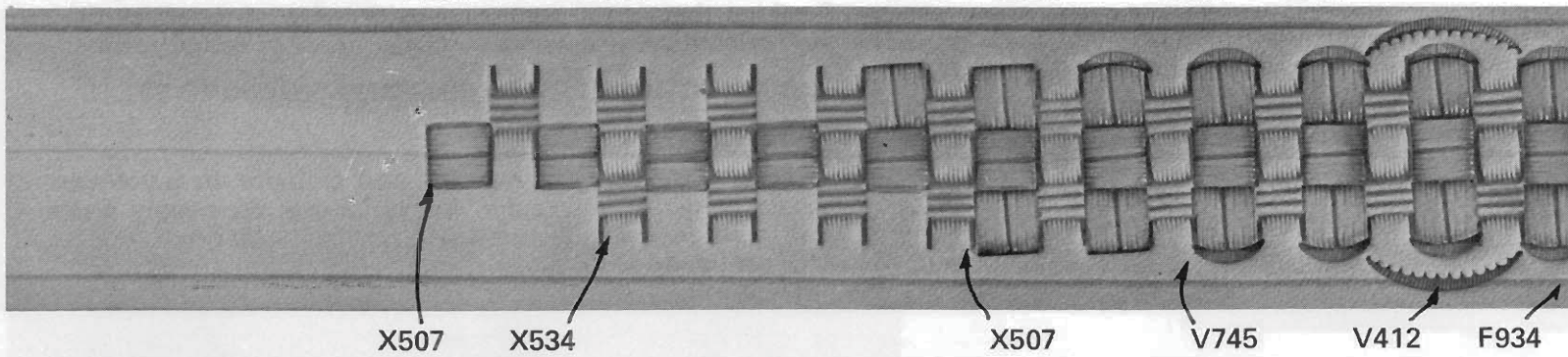
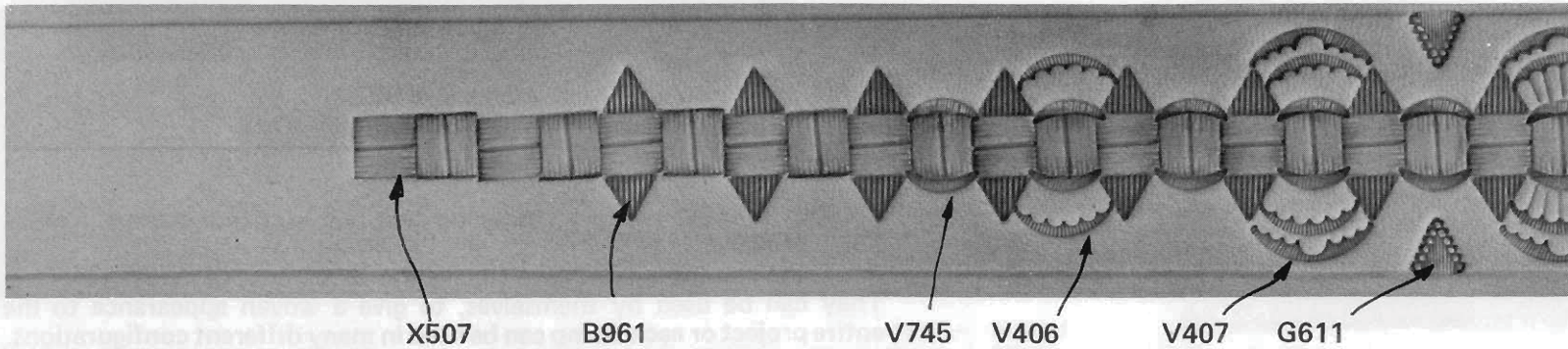
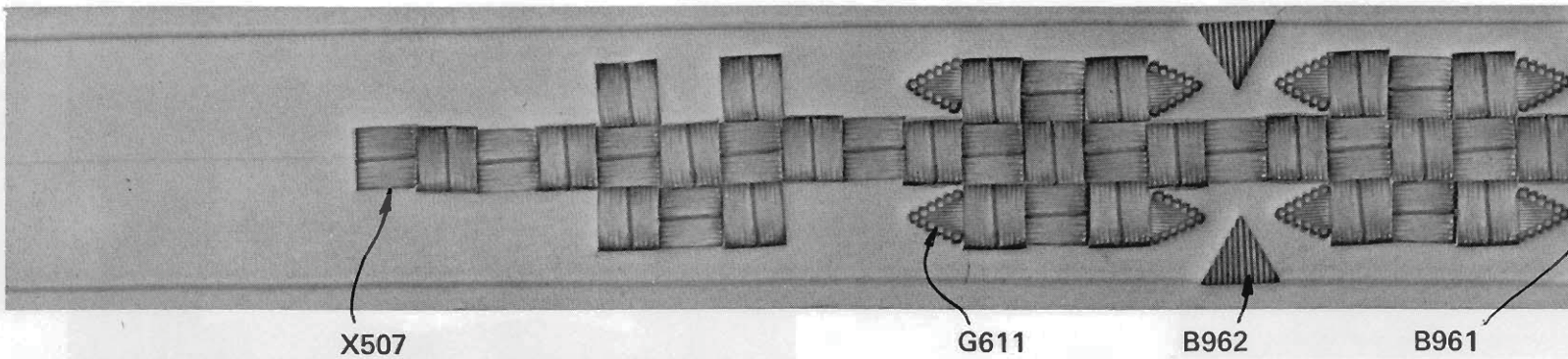
Combine these two new stamps with a few of the many Crafttool stamps available and you have a fantastic variety of design possibilities.

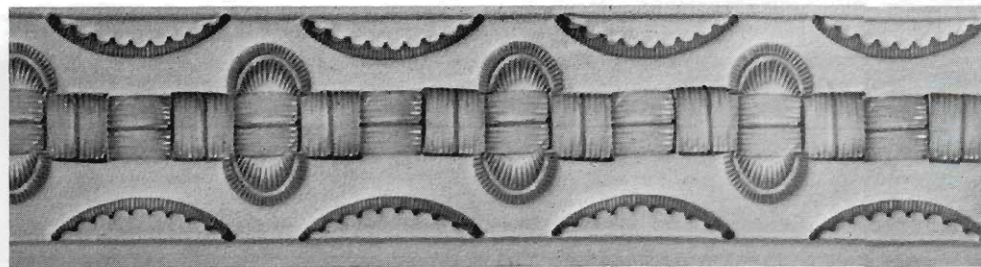
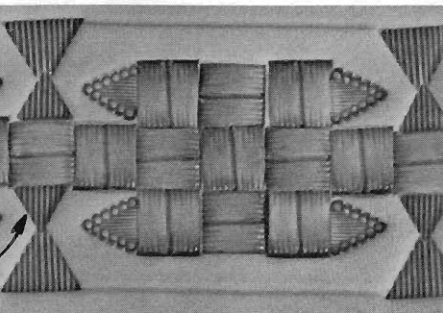
INSTRUCTIONS FOR DYEING AND FINISHING BELTS

1. Apply dye and allow to dry.
2. Apply a resist to dyed areas and also to those areas you wish to remain natural leather color. Let resist dry, then apply a second coat to insure complete coverage. Let second coat dry.
3. Apply antique and let dry.
4. Apply finish.

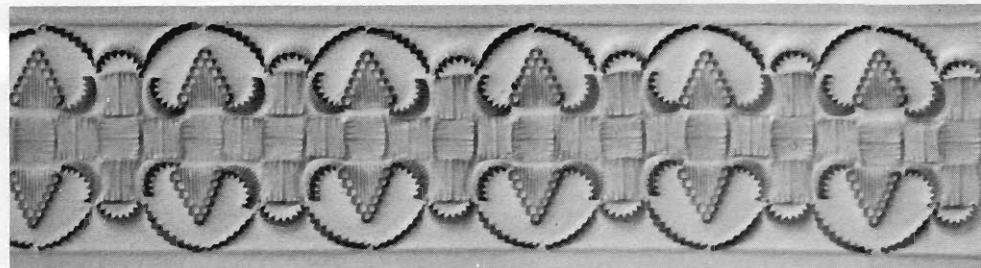
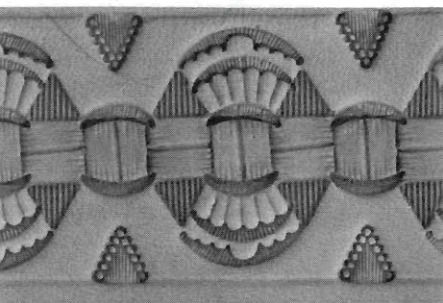




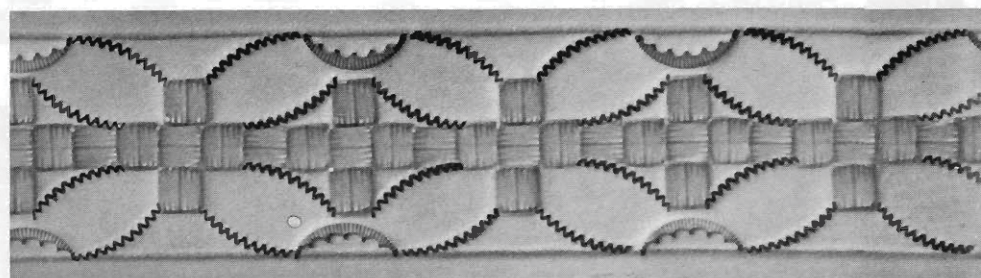
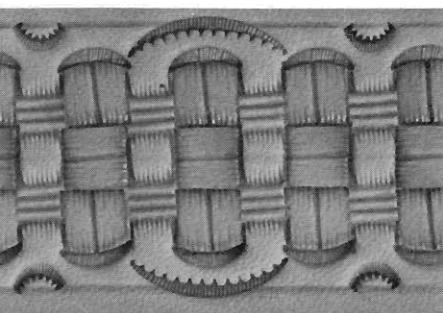




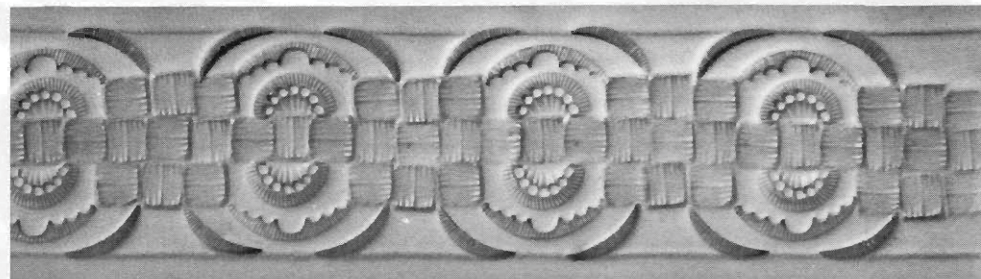
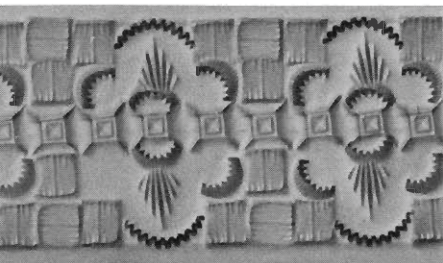
X507 D439 V417



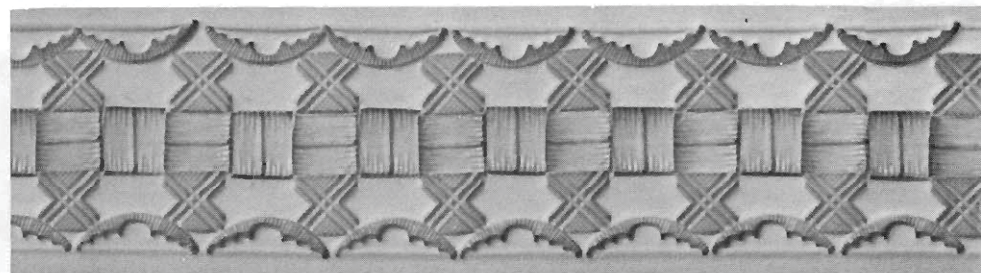
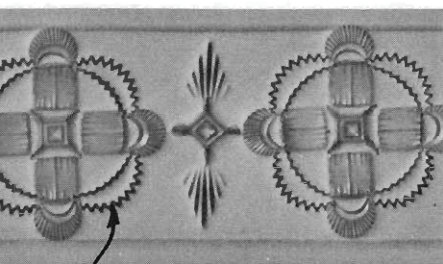
X506 G611 F934 V462



X506 V406 V403

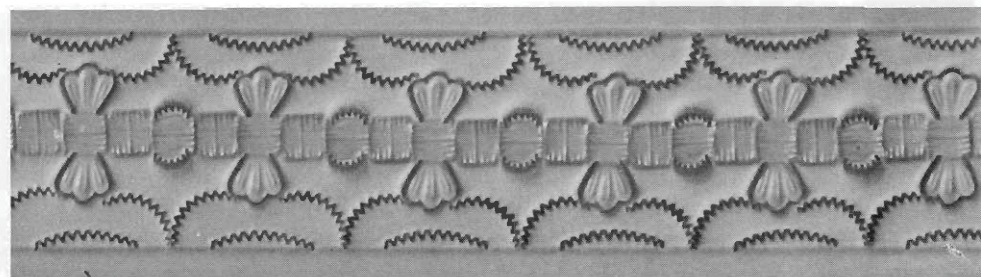
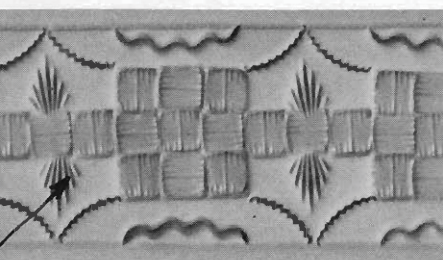


X506 D606 V407 V707



X507 G536 V407

V402



X506 Y653 V403 V402 F933