



Doodle Page Digital Download

This PDF file contains 1 (one) Doodle Page. The PDF has been put together to give you options when it comes to printing. Pages and patterns that are larger than 8½x11 have been provided in two formats:



1) Full Size

If you would like to have a full size print out, take the full size pages to your local print shop and they can print it for you. All full size Doodle Pages are 11x17



2) Tiled

The tiled pages give you the option of printing the full sized Doodle Pages at home. You print the tiled pages and then assemble them to make the larger patterns.

The Doodle Page PDF files are typically laid out like this:

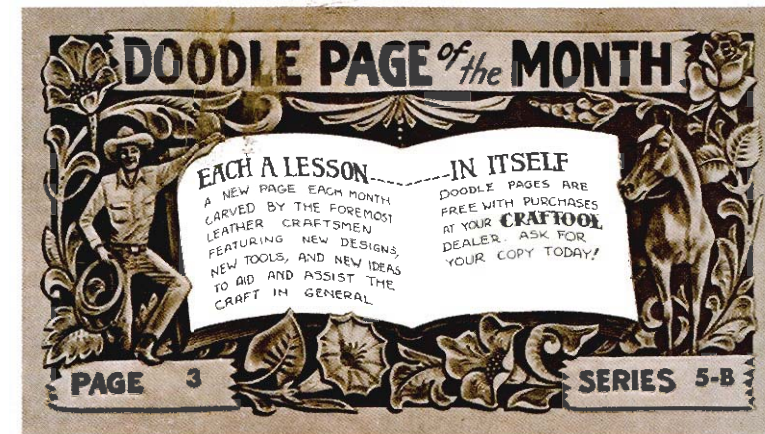
Front – full sized, front – tiled, back – full sized, back – tiled

(Some Doodle Pages do not have backs)

Please note: When printing on a home printer, the edges may get cut off. To avoid this, make sure “Page Scaling” is set to “Shrink to Printable Area” in the Adobe Reader print dialogue box. This will decrease the size of the Doodle Page a very small amount.



You may take this PDF file to your local print shop to have the full-size pages printed for your own personal use.



V. I. P. PORTRAITS

EISENHOWER

by Christine Stanley

President Eisenhower shares a common characteristic with a large segment of the male population, that of a generous expanse of forehead. This is a feature that every portrait artist must deal with as it arises. Partial baldness presents no particular problem in carving technique. Actually it tends to reduce the amount of carving. However it does place added responsibility on the artist to capture the personality of the subject by directing special attention to those features which reflect the desired image in the finished portrait.

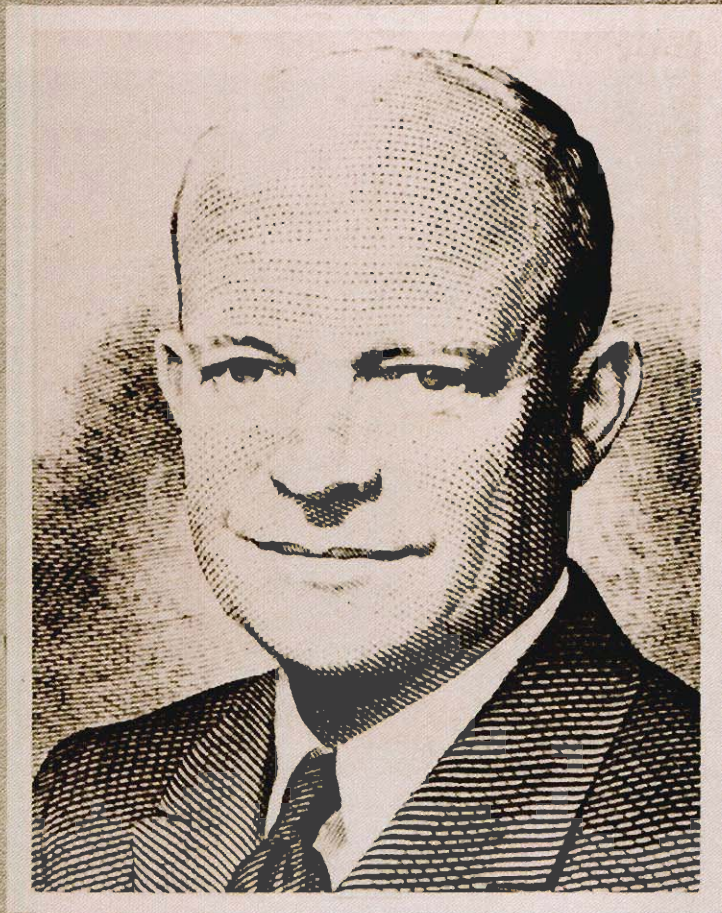
Although the political career General Eisenhower chose to follow after his distinguished military service required a certain amount of public familiarity with the political image, it is difficult to associate the nickname "IKE" with the man in this particular portrait. What we actually see is a man of great dignity in a relaxed pose. The features are symmetrical with no specific emphasis needed in any area. The subject's personality is captured by careful attention to the general expression as portrayed by the harmony of the various features of the subject. The F895 beveler is used extensively here as in most portraiture. The F891 intermediate size beveler was found very useful in the work on the ear. Using the correct size beveler is simply a matter of good craftsmanship.

A passing comment may be in order about the tools used in leather portraits. You may have noticed that only seven or eight tools have been used in this series of portraits although the artist has a complete inventory of Craftool leather carving tools plus many specially designed tools received as gifts from generous friends. This is to indicate that one should be properly concerned with having the correct tools to do a specific job.

Seven to eight ounce cowhide allows good carving depth and the bevelers can be used to good advantage to make the subject stand out from the background. The heavier leather also lends itself to forming and modeling good strong features. One can approach the appearance of embossing by using a heavy beveling technique and finishing off with the modeler. Any blemish in the leather should fall into an area to be stamped with the background tools, otherwise they might detract from the appearance of the subject.

The identifiable personality, or as some say, the likeness of the subject should be the first consideration of the artist. The artist should avoid taking liberties by trying to place his own interpretation on the personality of the subject. This technique should be reserved for the satirist or the artist who wishes to engage in interpretative portrait work for some personal satisfaction. Generally, portrait work is done at the request of the subject or to satisfy the interest of the general public. This likeness of the subject can be captured by a careful study of the subject. The highlights and shadows should be faithfully reproduced. Any distortion of the features will tend to lose the identity of the subject in the final portrait.





F890

F891

F895

F896

F900

100M

100L

F890

F891

F895

F890

F895

F895

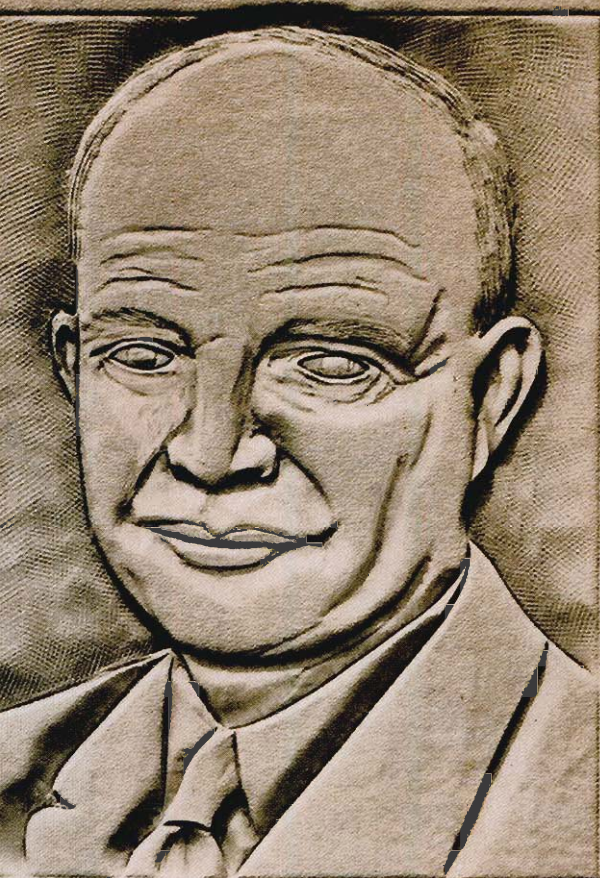
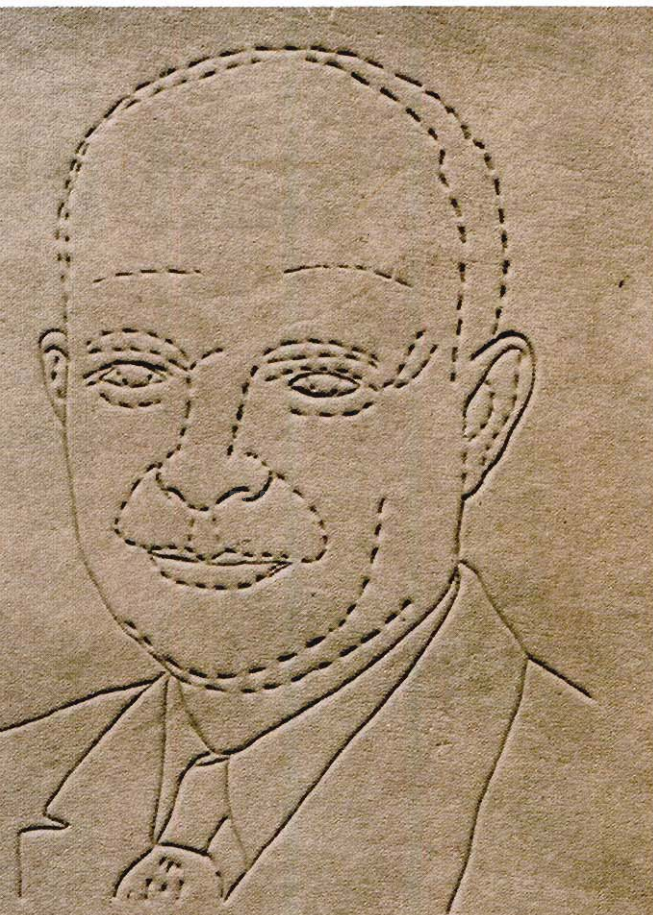
100M

F896

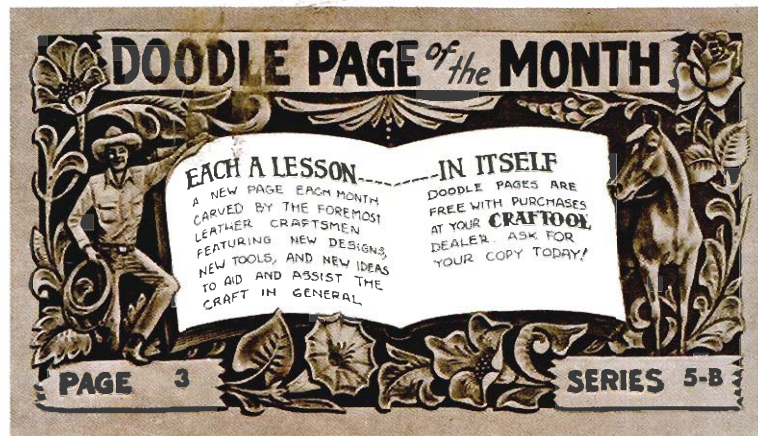
100L

F890

F895



Christine Stanley



V. I. P. PORTRAITS

EISENHOWER

by Christine Stanley

President Eisenhower shares a common characteristic with a large segment of the male population, that of a generous expanse of forehead. This is a feature that every portrait artist must deal with as it arises. Partial baldness presents no particular problem in carving technique. Actually it tends to reduce the amount of carving. However it does place added responsibility on the artist to capture the personality of the subject by directing special attention to those features which reflect the desired image in the finished portrait.

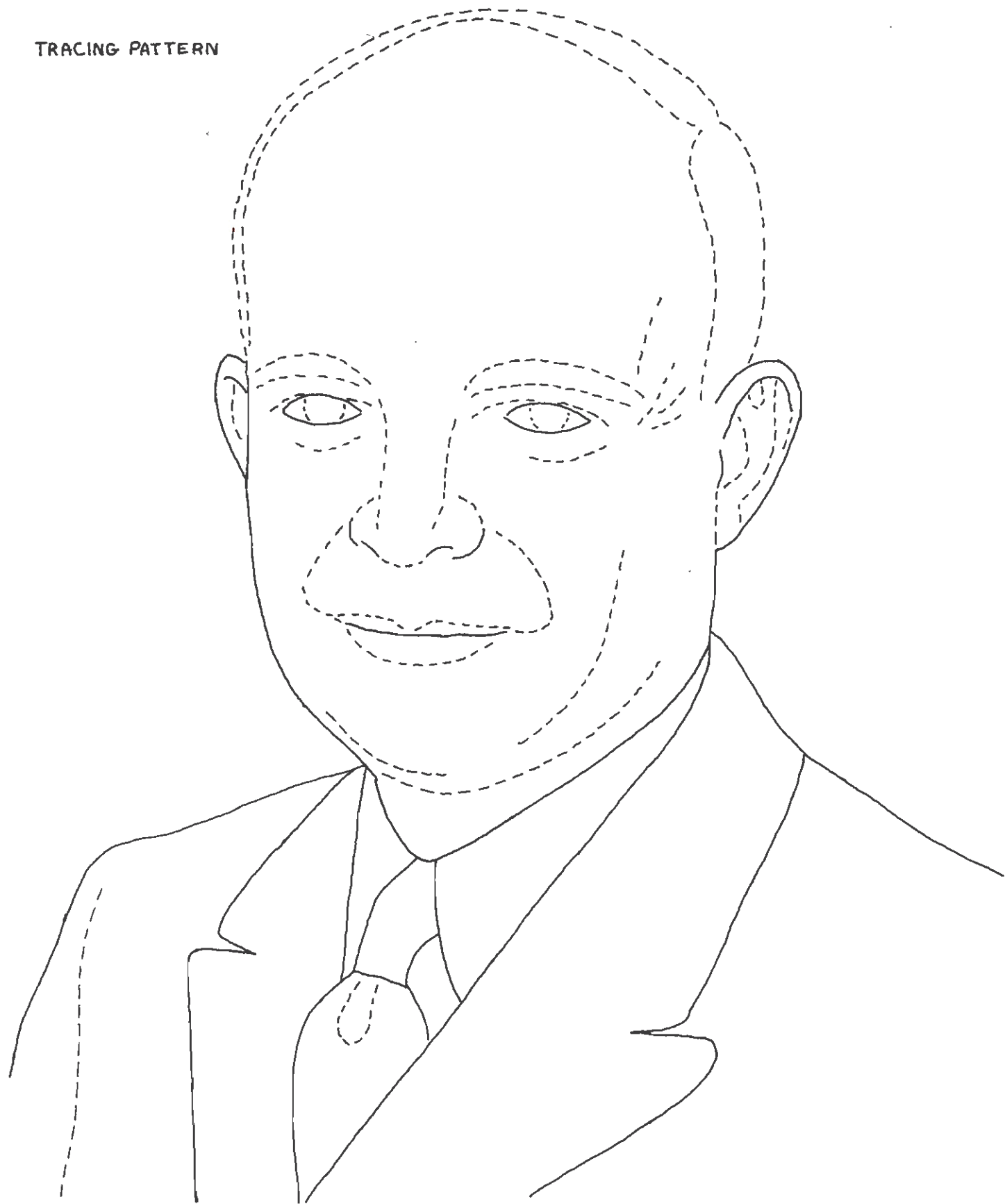
Although the political career General Eisenhower chose to follow after his distinguished military service required a certain amount of public familiarity with the political image, it is difficult to associate the nickname "IKE" with the man in this particular portrait. What we actually see is a man of great dignity in a relaxed pose. The features are symmetrical with no specific emphasis needed in any area. The subject's personality is captured by careful attention to the general expression as portrayed by the harmony of the various features of the subject. The F895 beveler is used extensively here as in most portraiture. The F891 intermediate size beveler was found very useful in the work on the ear. Using the correct size beveler is simply a matter of good craftsmanship.

A passing comment may be in order about the tools used in leather portraits. You may have noticed that only seven or eight tools have been used in this series of portraits although the artist has a complete inventory of Craftool leather carving tools plus many specially designed tools received as gifts from generous friends. This is to indicate that one should be properly concerned with having the correct tools to do a specific job.

Seven to eight ounce cowhide allows good carving depth and the bevelers can be used to good advantage to make the subject stand out from the background. The heavier leather also lends itself to forming and modeling good strong features. One can approach the appearance of embossing by using a heavy beveling technique and finishing off with the modeler. Any blemish in the leather should fall into an area to be stamped with the background tools, otherwise they might detract from the appearance of the subject.

The identifiable personality, or as some say, the likeness of the subject should be the first consideration of the artist. The artist should avoid taking liberties by trying to place his own interpretation on the personality of the subject. This technique should be reserved for the satirist or the artist who wishes to engage in interpretative portrait work for some personal satisfaction. Generally, portrait work is done at the request of the subject or to satisfy the interest of the general public. This likeness of the subject can be captured by a careful study of the subject. The highlights and shadows should be faithfully reproduced. Any distortion of the features will tend to lose the identity of the subject in the final portrait.

TRACING PATTERN



TRACING PATTERN

