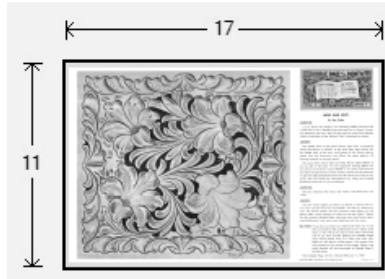




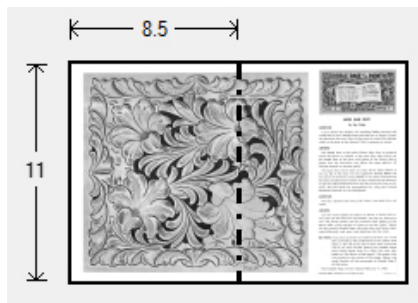
Doodle Page Digital Download

This PDF file contains 1 (one) Doodle Page. The PDF has been put together to give you options when it comes to printing. Pages and patterns that are larger than 8½x11 have been provided in two formats:



1) Full Size

If you would like to have a full size print out, take the full size pages to your local print shop and they can print it for you. All full size Doodle Pages are 11x17



2) Tiled

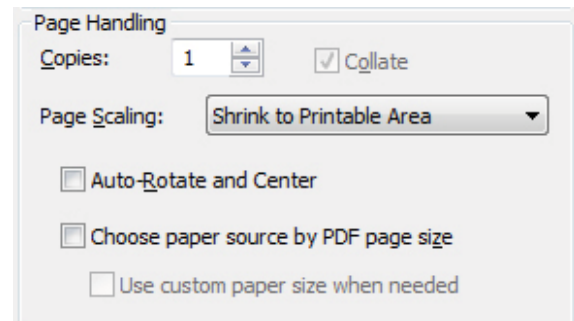
The tiled pages give you the option of printing the full sized Doodle Pages at home. You print the tiled pages and then assemble them to make the larger patterns.

The Doodle Page PDF files are typically laid out like this:

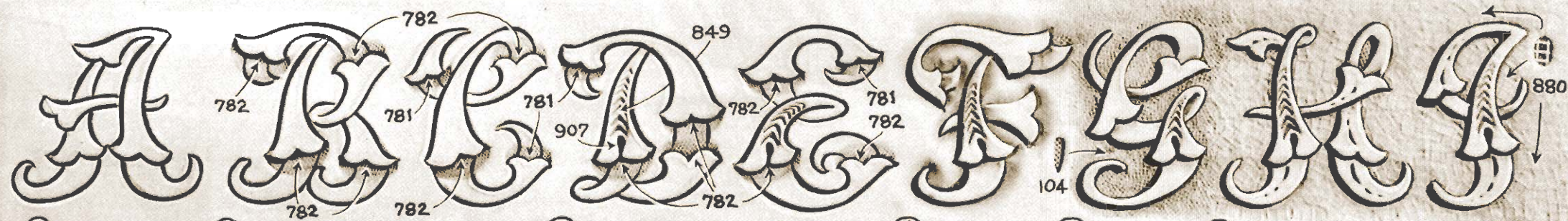
Front – full sized, front – tiled, back – full sized, back – tiled

(Some Doodle Pages do not have backs)

Please note: When printing on a home printer, the edges may get cut off. To avoid this, make sure “Page Scaling” is set to “Shrink to Printable Area” in the Adobe Reader print dialogue box. This will decrease the size of the Doodle Page a very small amount.

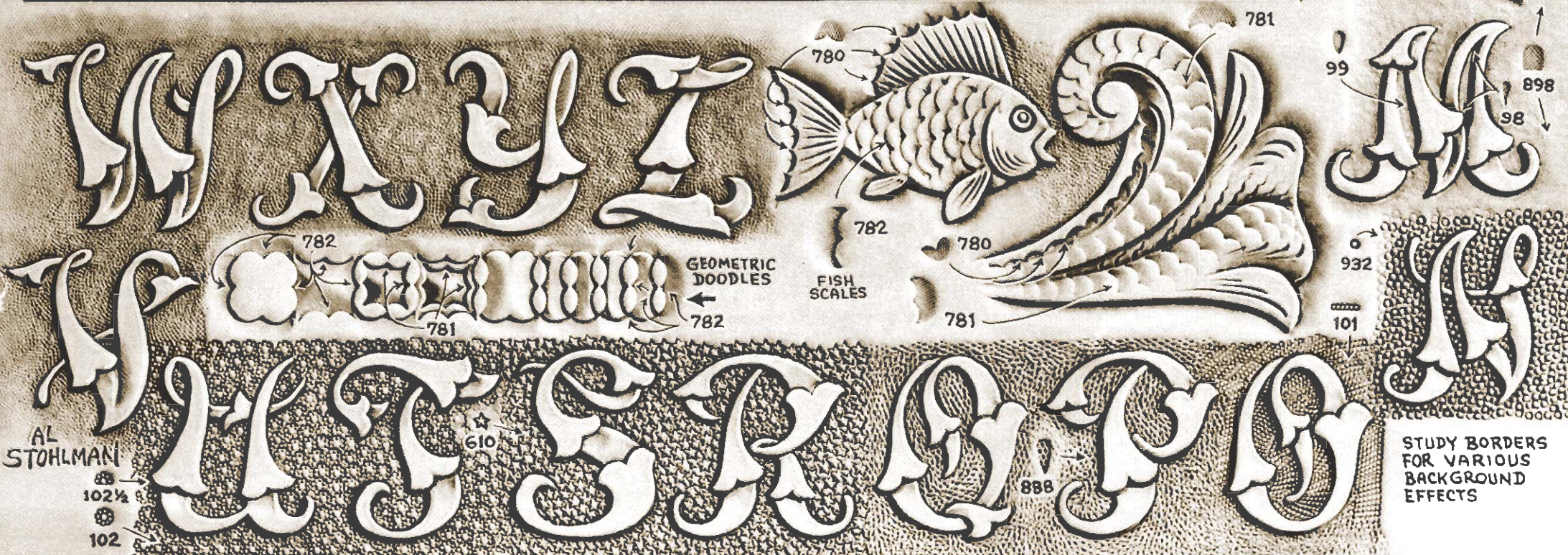
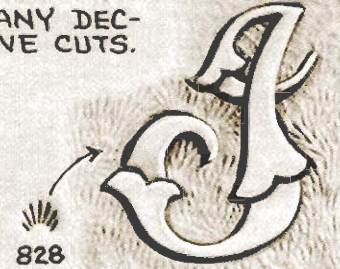
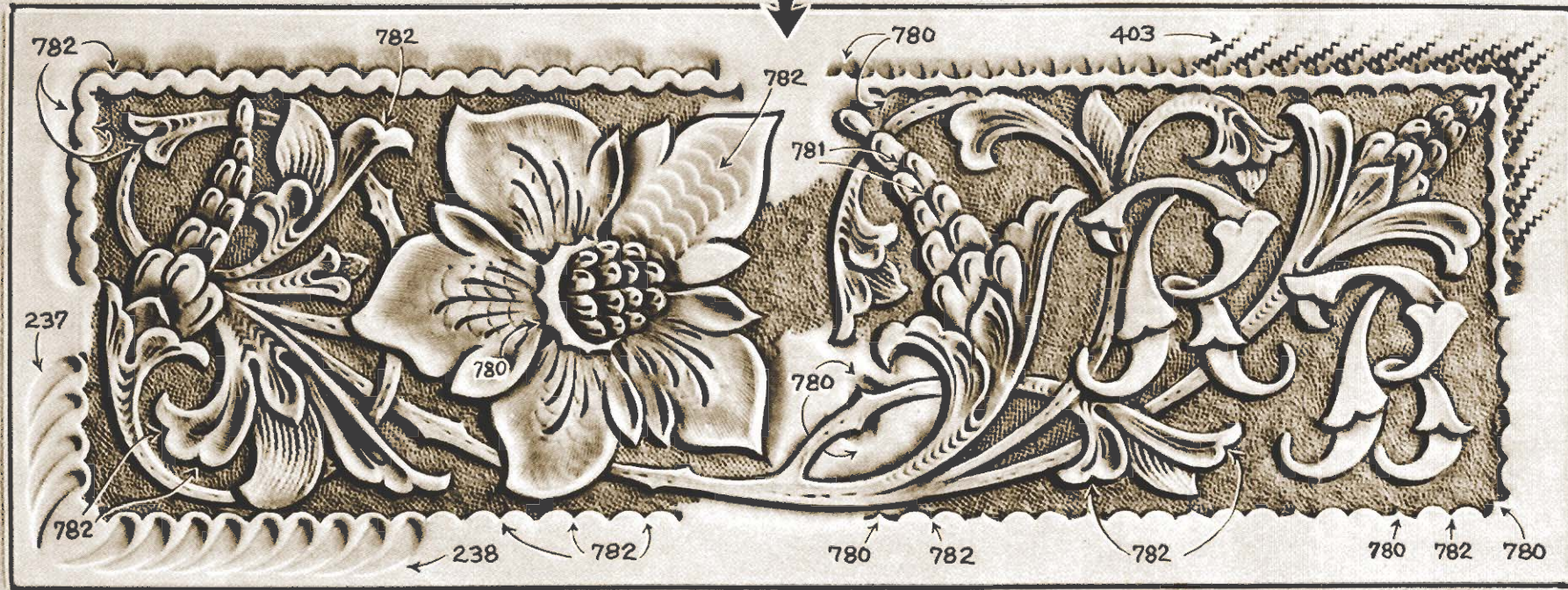


You may take this PDF file to your local print shop to have the full-size pages printed for your own personal use.



- ① CUT THE LETTERS
 - ② USE THE NEW CRAFTTOOL STAMPS AS SHOWN ABOVE.
 - ③ DECORATE THE LETTERS TO SUIT YOUR FANCY.
 - ④ BEVEL THE OUTLINES.
 - ⑤ MAT THE BACKGROUND.
 - ⑥ ADD ANY DECORATIVE CUTS.
- STEPS IN STAMPING THE ALPHABET**

WALLET DESIGN ... SHOWING DIFFERENT BORDER EFFECTS



AL
STOHLMAN
102 1/2
102

STUDY BORDERS
FOR VARIOUS
BACKGROUND
EFFECTS

DOODLE PAGE of the MONTH

EACH A LESSON
A NEW PAGE EACH MONTH
CARVED BY THE FOREMOST
LEATHER CRAFTSMEN
FEATURING NEW DESIGNS,
NEW TOOLS, AND NEW IDEAS
TO AID AND ASSIST THE
CRAFT IN GENERAL.

IN ITSELF
DOODLE PAGES ARE
FREE WITH PURCHASES
AT YOUR CRAFTTOOL
DEALER. ASK FOR
YOUR COPY TODAY!

PAGE 9 SERIES 10

USING THE NEW CRAFTTOOL "ALPHABET" STAMPS
by AL STOHLMAN

This month's Doodle Page features Crafttool's Three NEW Saddle Stamps, designed especially to aid in the stamping of alphabets and for other special effects and varied uses. The 1/4" alphabet shown at left was especially created for these tools. You will also note that these tools are perfectly shaped for use on the Craftaid Alphabet #2540. The special shape of the tools perfectly fits the curved segments of the letters and eliminates a lot of tedious beveling that would require several tools ordinarily.

Follow the Stamping Steps . . . 1 through 6 . . . and note how the tools are used. One blow with the mallet is all that is required to perfectly bevel the curved sections (step 2). The letters can be decorated in any manner desired. And . . . where this is intended, any shading or pounding on the letters should be done before beveling around their outlines. The letters generally show up much better, however, if too much decorative work is not done . . . especially when a heavy textured background is used as shown in the examples at the bottom of the page.

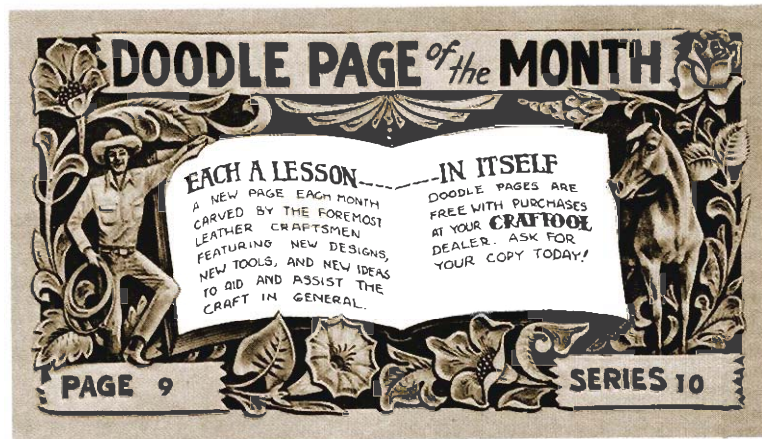
The Wallet Design is presented for those desiring a more lacey and lighter pattern from the usual scrolls and acanthus leaves. This pattern was designed with the New Crafttools in mind, and by studying the Photo you will note the many curved segments of the leaves and buds . . . and even the flower center itself . . . where the new tools will fit for speedier and smoother beveling. The Flower Petal at upper right was left unfinished to show how tool #782 textures the surface. Pearshade and decorative cut next. Tool #780 was used to form the ring in center of flower around the seeds. Use tools #782 and #781 to expose seeds and bring them in relief.

The borders are presented to show a few of the many ideas and effects that can be created with the NEW Crafttools. Get out your scrap leather and start doodling up your own designs and borders with these NEW TOOLS. Used in conjunction with other tools, many interesting patterns can be achieved. Order your set of these NEW Crafttools today . . . and join the Doodling Fun!

★ ★ ★ CRAFTTOOL NEWS ★ ★ ★

NEW TOOLS

Be sure to get these NEW TOOLS now from your favorite Craft dealer or Craft store. You will find these versatile stamps a welcome addition to your Crafttool collection, and indispensable tools for that "special" job.



USING THE NEW CRAFTOOL "ALPHABET" STAMPS

by AL STOHLMAN

This month's Doodle Page features Craftool's Three NEW Saddle Stamps, designed especially to aid in the stamping of alphabets and for other special effects and varied uses. The 1 1/4" alphabet shown at left was especially created for use on these tools. You will also note that these tools are perfectly shaped for use on the Craftaid Alphabet #2540. The special shape of the tools perfectly fits the curved segments of the letters and eliminates a lot of tedious beveling that would require several tools ordinarily.

Follow the Stamping Steps . . . 1 through 6 . . . and note how the tools are used. One blow with the mallet is all that is required to perfectly bevel the curved sections (step 2). The letters can be decorated in any manner desired. And . . . where this is intended, any shading or pounding on the letters should be done before beveling around their outlines. The letters generally show up much better, however, if too much decorative work is not done . . . especially when a heavy textured background is used as shown in the examples at the bottom of the page.

The Wallet Design is presented for those desiring a more lacy and lighter pattern from the usual scrolls and acanthus leaves. This pattern was designed with the New Craftools in mind, and by studying the Photo you will note the many curved segments of the leaves and buds . . . and even the flower center itself . . . where the new tools will fit for speedier and smoother beveling. The Flower Petal at upper right was left unfinished to show how tool #782 textures the surface. Pearshade and decorative cut next. Tool #780 was used to form the ring in center of flower around the seeds. Use tools #782 and #781 to expose seeds and bring them in relief.

The borders are presented to show a few of the many ideas and effects that can be created with the NEW Craftools. Get out your scrap leather and start doodling up your own designs and borders with these NEW TOOLS. Used in conjunction with other tools, many interesting patterns can be achieved. Order your set of these NEW Craftools today . . . and join the Doodling Fun!

★ ★ ★ CRAFTOOL NEWS ★ ★ ★



780



781



782

NEW TOOLS

Be sure to get these NEW TOOLS now from your favorite Craft dealer or Craft store. You will find these versatile stamps a welcome addition to your Craftool collection, and indispensable tools for that "special" job.