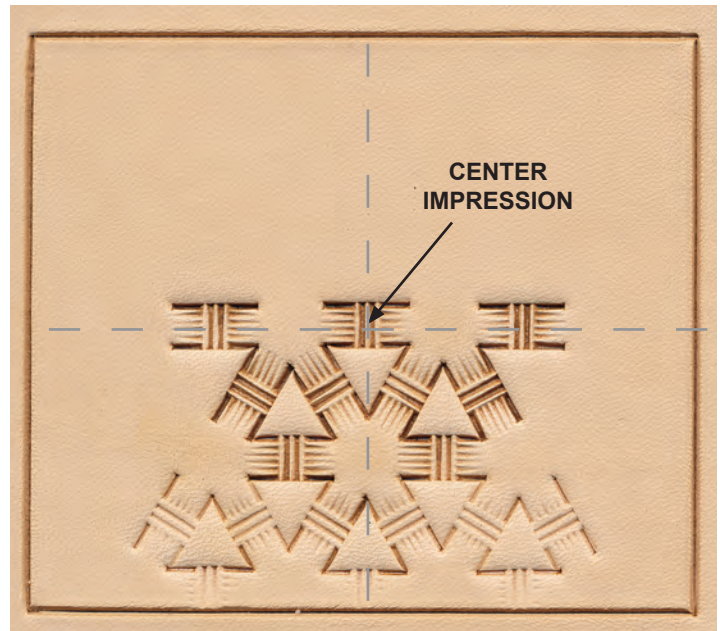
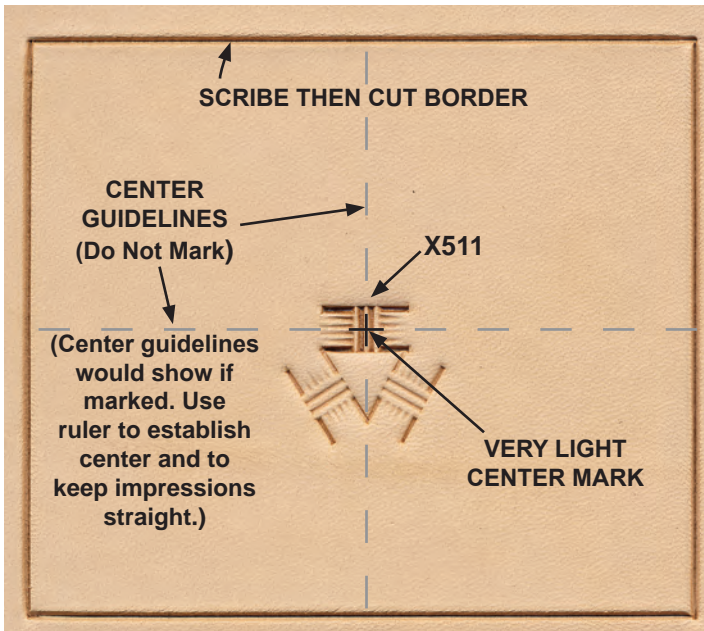




From Tony Laier's Bench:

TRIANGLE BASKETWEAVE DESIGN USING X511

You will need an X511 (any size straight basket stamp will work), a ruler, swivel knife, optional beveler and a border stamp of your choice (D436 shown).

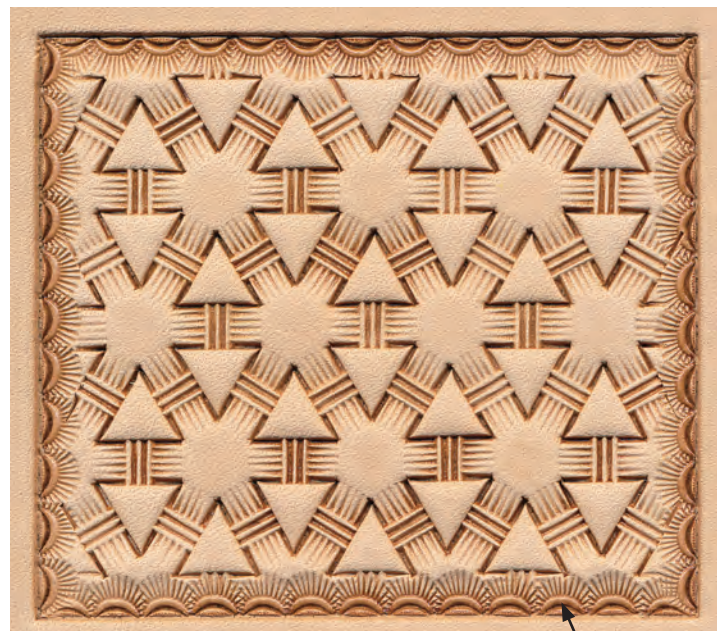
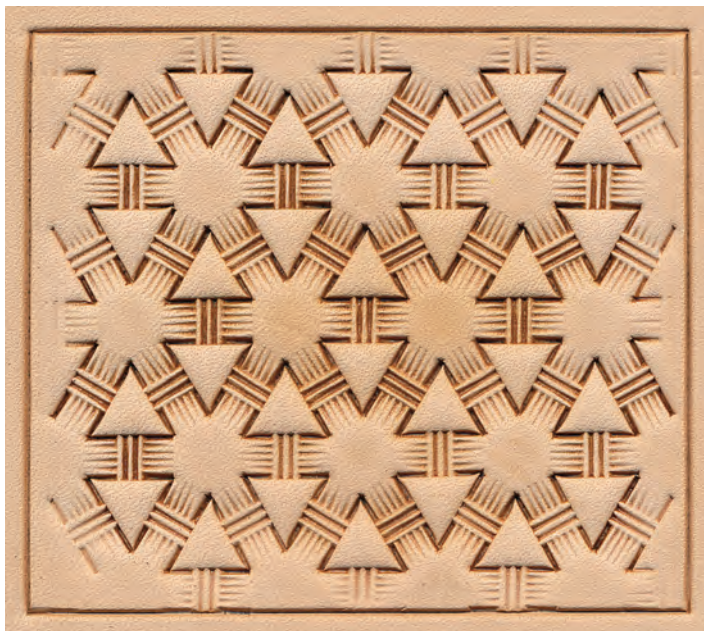


STEP 1:

- ~ Scribe, then cut a border around your project.
- ~ Find the center of the space to be stamped and make a very light mark.
- ~ Center X511 on mark, as shown.
- ~ Form triangle with next 2 impressions touching points.

STEP 2:

- ~ Then work off first 3 impressions in one direction (up or down) until half of space is full.
- ~ Tilt to fade into border.
- ~ **NOTE:** Use ruler to keep all lines aligned while adding more triangles.



STEP 3:

- ~ Then fill space in opposite direction. **NOTE:** Tilt tool close to borders for a partial impression.

STEP 4:

- ~ Bevel cut borders (optional).
- ~ Then add your choice of a border stamp to complete.



©2013 Tandy Leather Factory. All rights reserved.