



Doodle Page Digital Download

This PDF file contains 1 (one) Doodle Page. The PDF has been put together to give you options when it comes to printing. Pages and patterns that are larger than 8½x11 have been provided in two formats:



1) Full Size

If you would like to have a full size print out, take the full size pages to your local print shop and they can print it for you. All full size Doodle Pages are 11x17



2) Tiled

The tiled pages give you the option of printing the full sized Doodle Pages at home. You print the tiled pages and then assemble them to make the larger patterns.

The Doodle Page PDF files are typically laid out like this:

Front – full sized, front – tiled, back – full sized, back – tiled

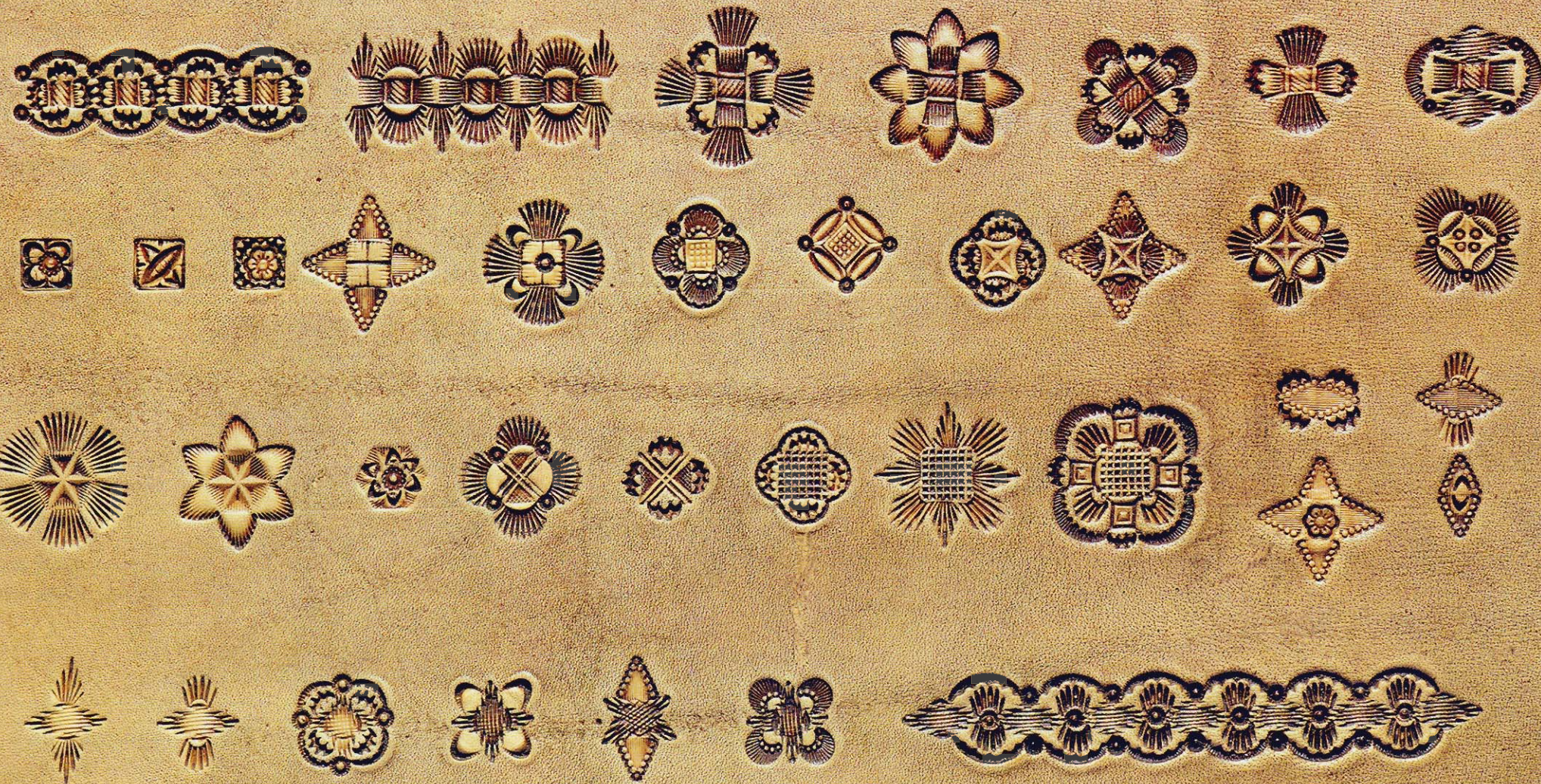
(Some Doodle Pages do not have backs)

Please note: When printing on a home printer, the edges may get cut off. To avoid this, make sure “Page Scaling” is set to “Shrink to Printable Area” in the Adobe Reader print dialogue box. This will decrease the size of the Doodle Page a very small amount.



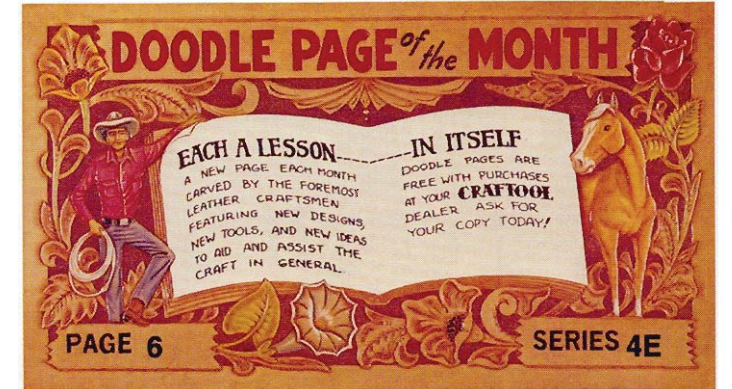
You may take this PDF file to your local print shop to have the full-size pages printed for your own personal use.

STAMP COMBINATIONS



A B C D E F G H I J K

AS



STAMP COMBINATIONS

by
Alan Scheiderer

Many CRAFTOOL stamps can be combined to produce some very nice designs. These designs can be used on key fobs, key cases, coin purses, billfolds, and belts.

The first row of patterns uses different CRAFTOOL stamps in the center of the design, and many different stamps were used around the center of the design. These included Figure Carving Stamps, Seeders, Veiners, and Camouflage Stamps. Stamp the central impression first, then stamp around the outside of the impression.

The second row of patterns uses CRAFTOOL stamps X507, G548, and G870. The X507 is reversed to create a four corner design, then CRAFTOOL stamps are stamped inside the X507. I then used the G548 and G870 CRAFTOOL stamps, and these were combined with the stamps I have indicated.

On the third row of patterns, geometric stamps are first used in the center, and the indicated stamps are used as shown.

In the fourth row of patterns, the F926D is used in the center of each design, and other CRAFTOOLS are used around the central impression.

Many CRAFTOOLS can be used to decorate the ALPHABET STAMPS. You may bevel around the outside, as shown with the letter "A", while the other letters were decorated with various stamps.

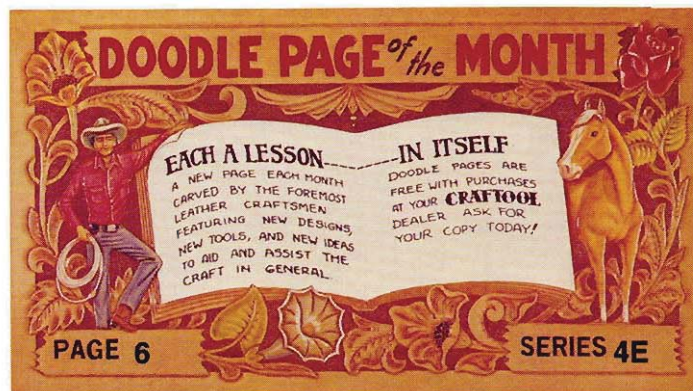
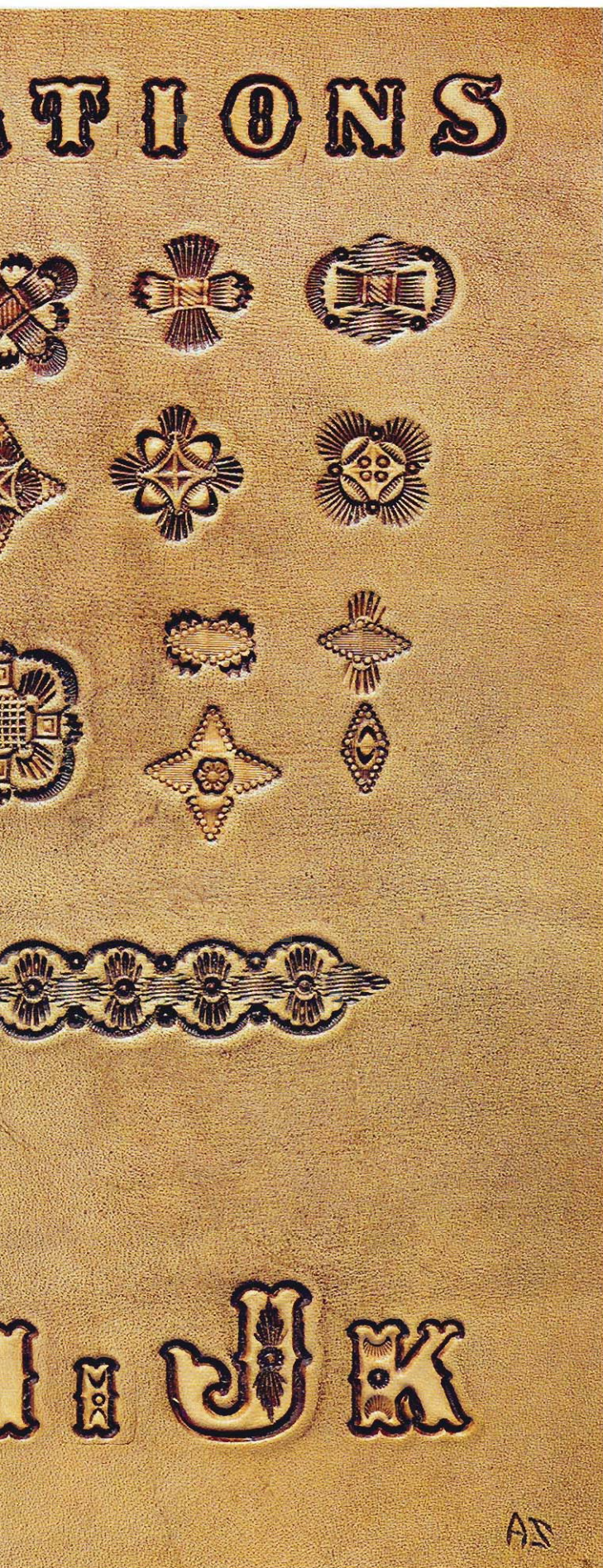
These patterns are just a small sample of what can be done with the vast selection of CRAFTOOL stamps that are available to the leather craftsman. When you want to enhance the designs, you can resist certain parts of the design with SUPER SHENE, stock #2002, and then stained with TANDY'S ANTIQUE LEATHER STAIN, stock #2071, or other stains, or dyes that TANDY LEATHER COMPANY offers. When dry, use a final finish of SUPER SHENE.

Have fun stamping!

STAMP COMBINA



A B C D E F G H



STAMP COMBINATIONS

by

Alan Scheiderer

Many CRAFTOOL stamps can be combined to produce some very nice designs. These designs can be used on key fobs, key cases, coin purses, billfolds, and belts.

The first row of patterns uses different CRAFTOOL stamps in the center of the design, and many different stamps were used around the center of the design. These included Figure Carving Stamps, Seeders, Veiners, and Camouflage Stamps. Stamp the central impression first, then stamp around the outside of the impression.

The second row of patterns uses CRAFTOOL stamps X507, G548, and G870. The X507 is reversed to create a four corner design, then CRAFTOOL stamps are stamped inside the X507. I then used the G548 and G870 CRAFTOOL stamps, and these were combined with the stamps I have indicated.

On the third row of patterns, geometric stamps are first used in the center, and the indicated stamps are used as shown.

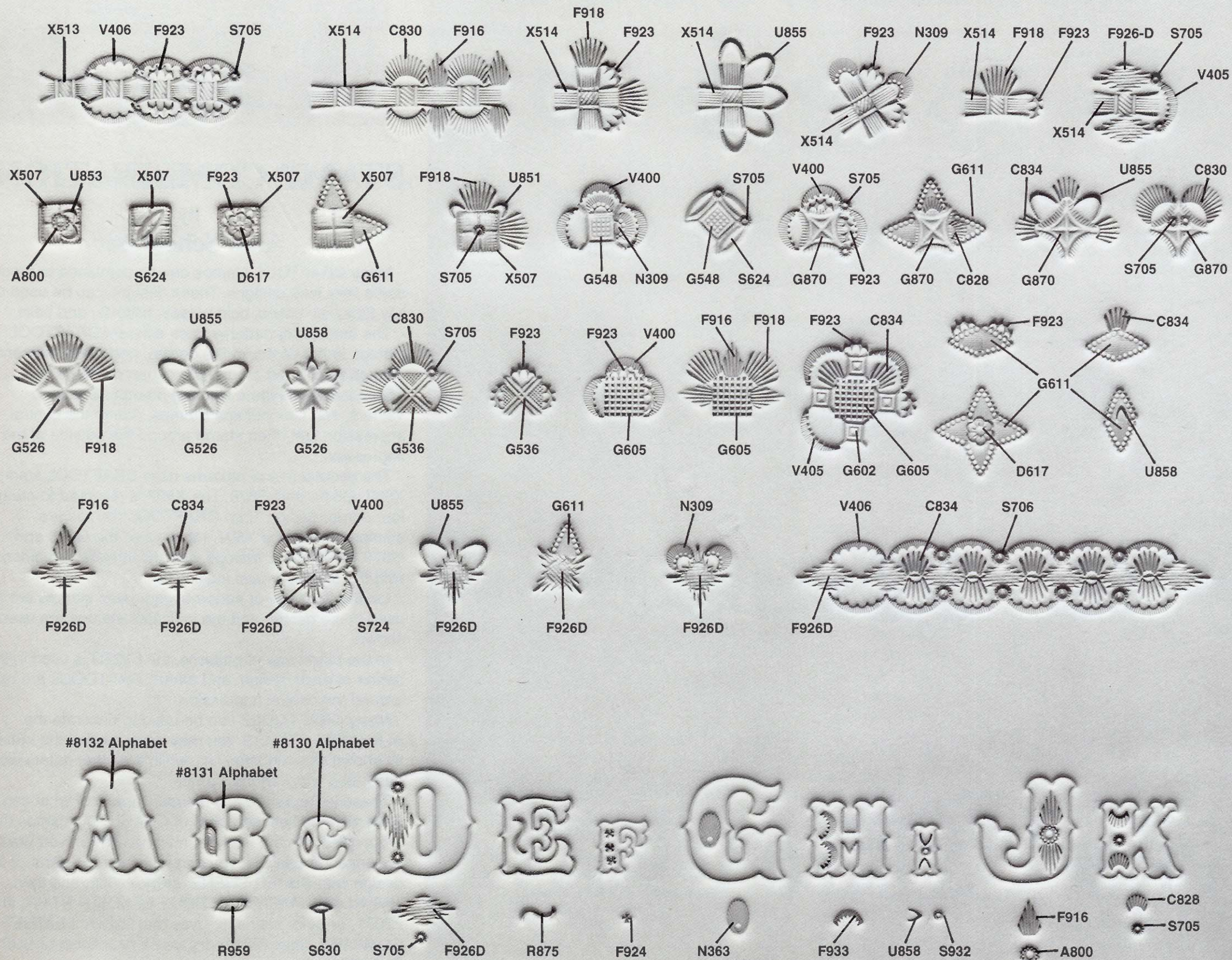
In the fourth row of patterns, the F926D is used in the center of each design, and other CRAFTOOLS are used around the central impression.

Many CRAFTOOLS can be used to decorate the ALPHABET STAMPS. You may bevel around the outside, as shown with the letter "A", while the other letters were decorated with various stamps.

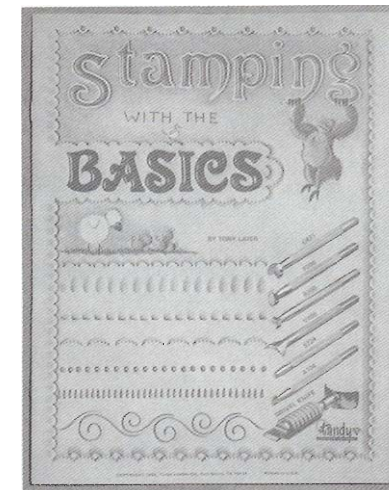
These patterns are just a small sample of what can be done with the vast selection of CRAFTOOL stamps that are available to the leather craftsman. When you want to enhance the designs, you can resist certain parts of the design with SUPER SHENE, stock #2002, and then stained with TANDY'S ANTIQUE LEATHER STAIN, stock #2071, or other stains, or dyes that TANDY LEATHER COMPANY offers. When dry, use a final finish of SUPER SHENE.

Have fun stamping!

STAMP COMBINATIONS

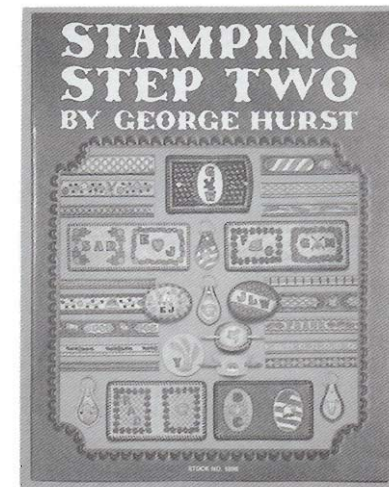


Visit your nearest Tandy Leather store for a complete selection of leathercrafting supplies including the following books on stamping designs in leather.

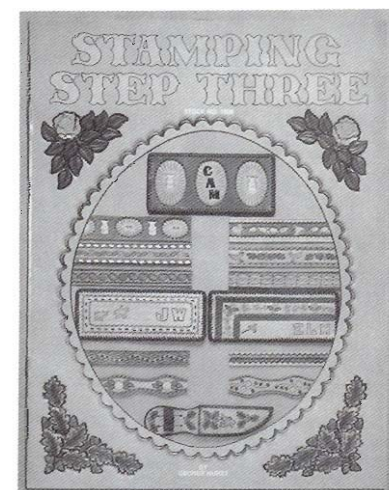


Stamping With the Basics. Introductory manual teaches the fundamentals of creative stamping. Learn basic stamping techniques and how to design patterns. 11 pages.

Stock #1897



Stamping Step Two. Easy stamping patterns and sections on antiquing, resisting and block dyeing. Ideal for beginners and resellers. 28 pages. **Stock #1898**



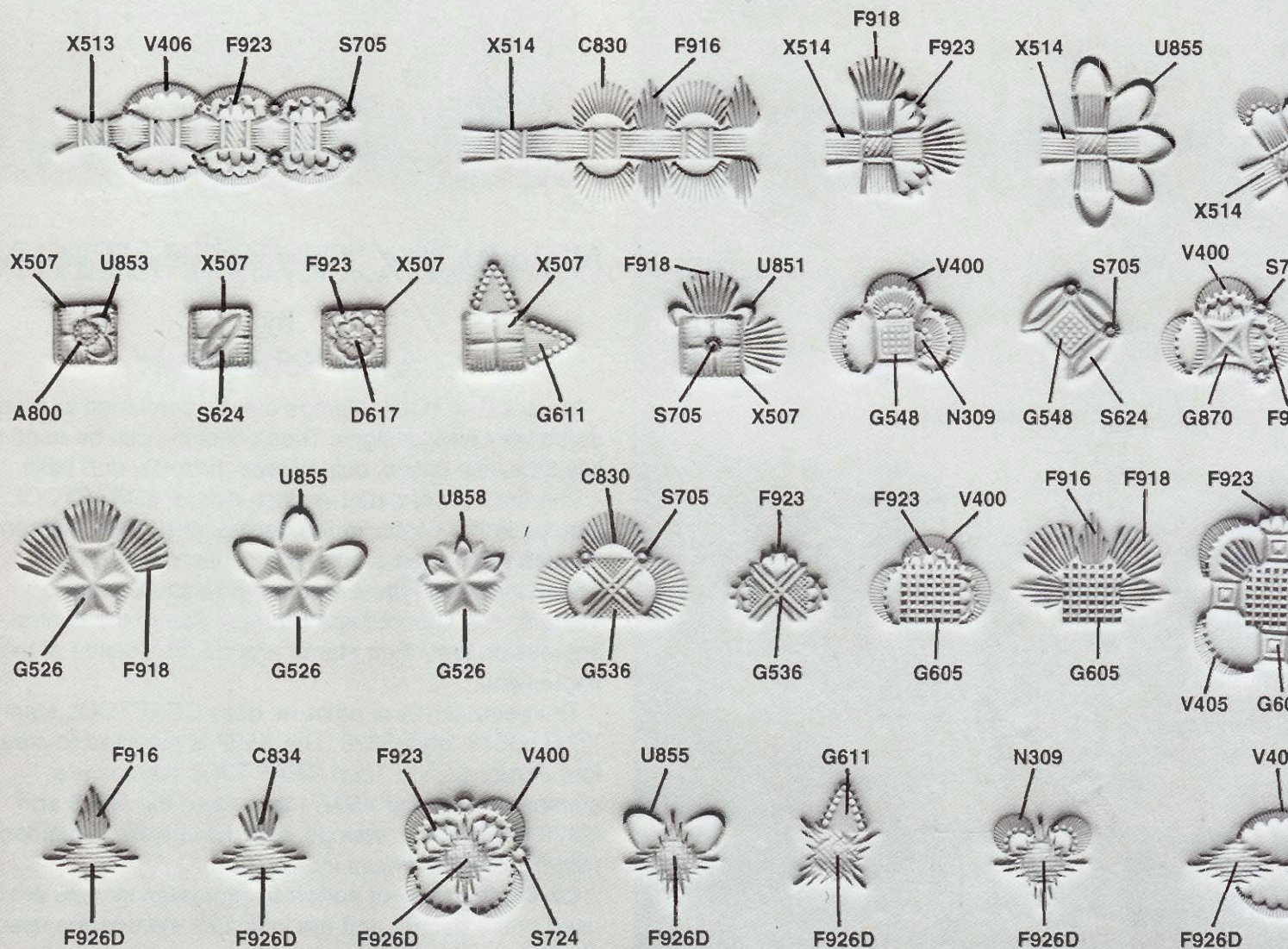
Stamping Step
Three Slightly more complex patterns than Stamping Step Two. Features dozens of stamping patterns for belts, wallets, coin purses, key cases, arrow-head plaques, knife sheaths and more!
24 color pages.
Stock #1905

© Copyright 1995
by Tandy Leather Co.
No part may be reprinted in
whole or part without permission.
Printed in the U. S. A.



TANDY
LEATHER COMPANY
AN EMPLOYEE STOCK OWNERSHIP PROGRAM CO.

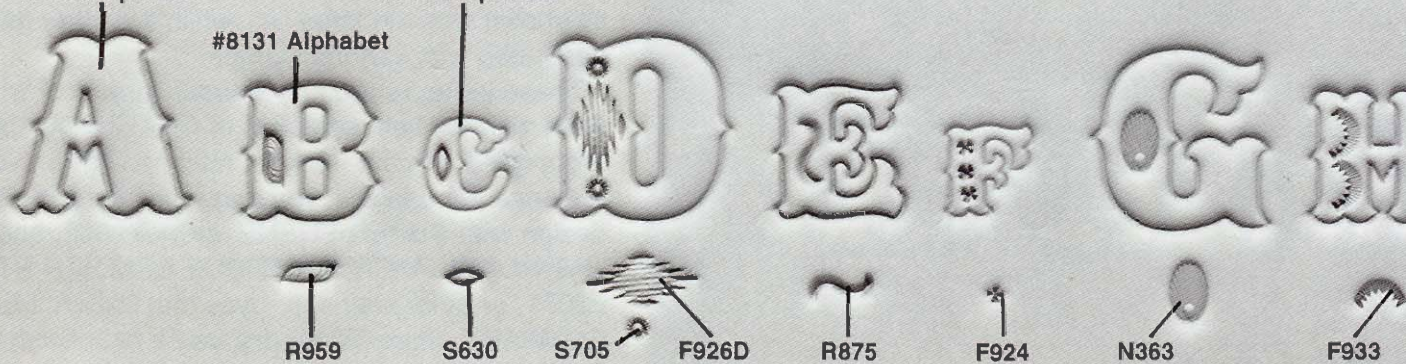
STAMP COMBINA



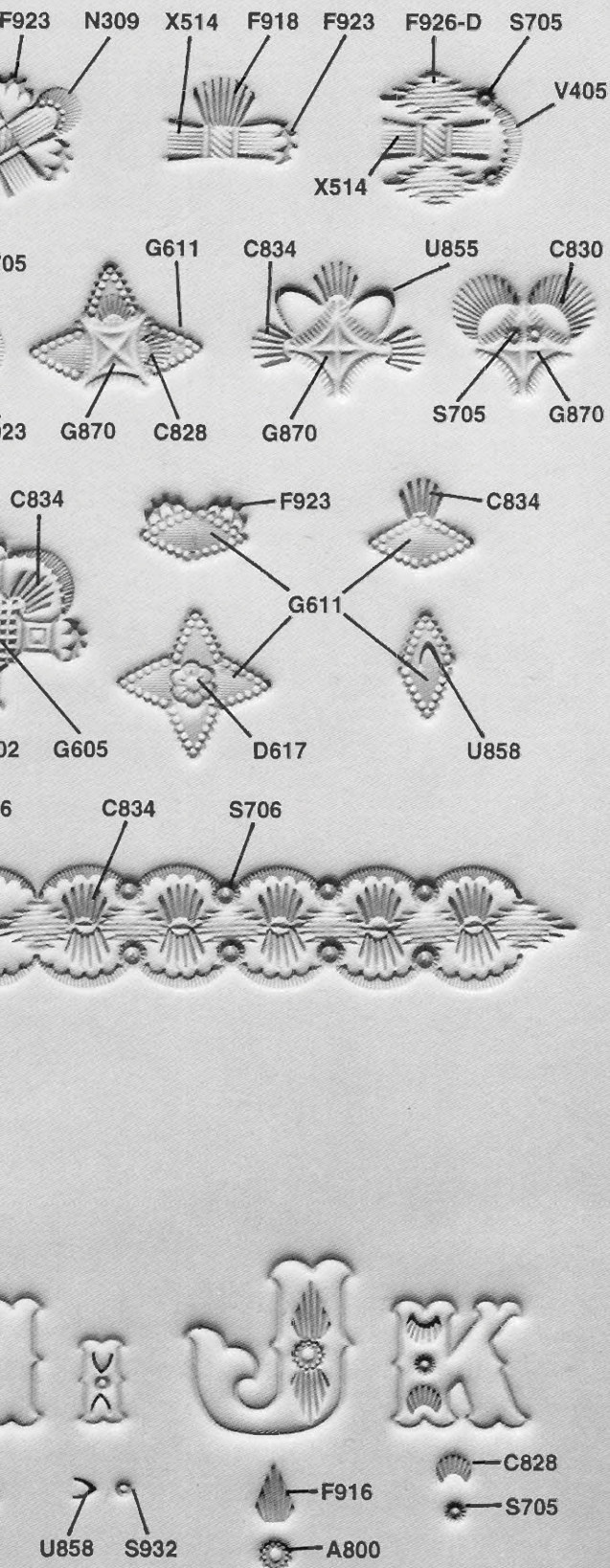
#8132 Alphabet

#8130 Alphabet

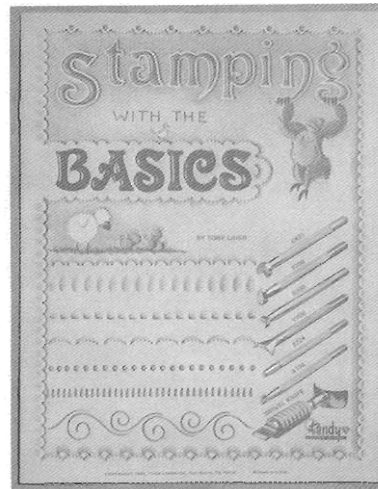
#8131 Alphabet



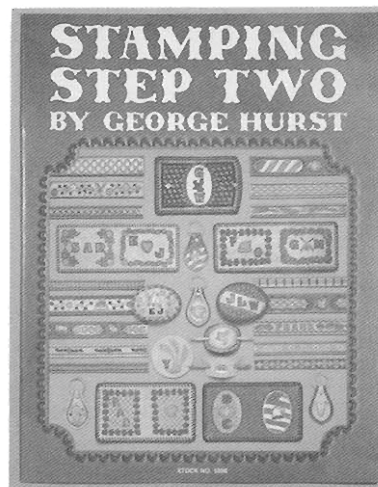
ATIONS



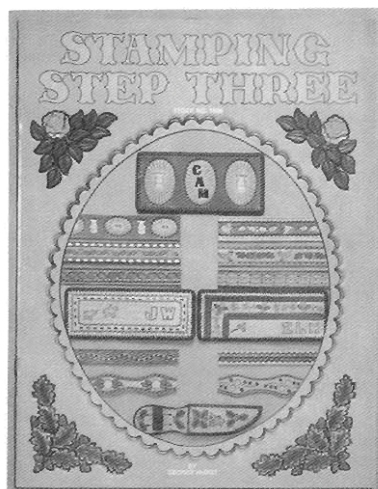
Visit your nearest Tandy Leather store for a complete selection of leathercrafting supplies including the following books on stamping designs in leather.



Stamping With the Basics. Introductory manual teaches the fundamentals of creative stamping. Learn basic stamping techniques and how to design patterns. 11 pages. **Stock #1897**



Stamping Step Two. Easy stamping patterns and sections on antiquing, resisting and block dyeing. Ideal for beginners and resellers. 28 pages. **Stock #1898**



Stamping Step Three Slightly more complex patterns than Stamping Step Two. Features dozens of stamping patterns for belts, wallets, coin purses, key cases, arrow-head plaques, knife sheaths and more! 24 color pages. **Stock #1905**

© Copyright 1995
by Tandy Leather Co.
No part may be reprinted in
whole or part without permission.
Printed in the U. S. A.

tandy
LEATHER COMPANY
AN EMPLOYEE STOCK OWNERSHIP PROGRAM CO.