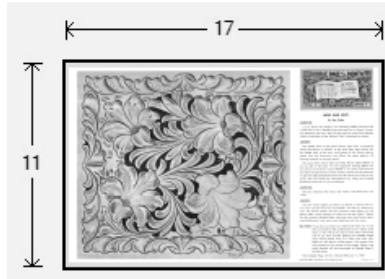




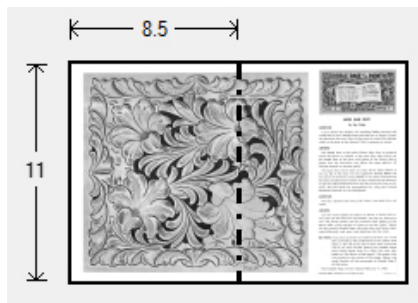
Doodle Page Digital Download

This PDF file contains 1 (one) Doodle Page. The PDF has been put together to give you options when it comes to printing. Pages and patterns that are larger than 8½x11 have been provided in two formats:



1) Full Size

If you would like to have a full size print out, take the full size pages to your local print shop and they can print it for you. All full size Doodle Pages are 11x17



2) Tiled

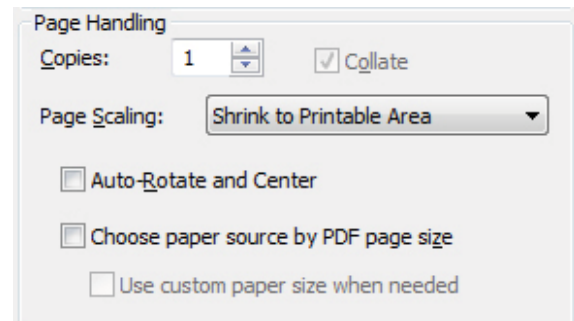
The tiled pages give you the option of printing the full sized Doodle Pages at home. You print the tiled pages and then assemble them to make the larger patterns.

The Doodle Page PDF files are typically laid out like this:

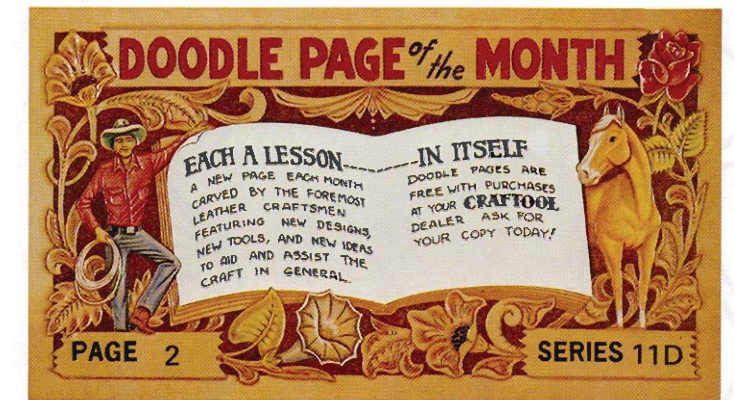
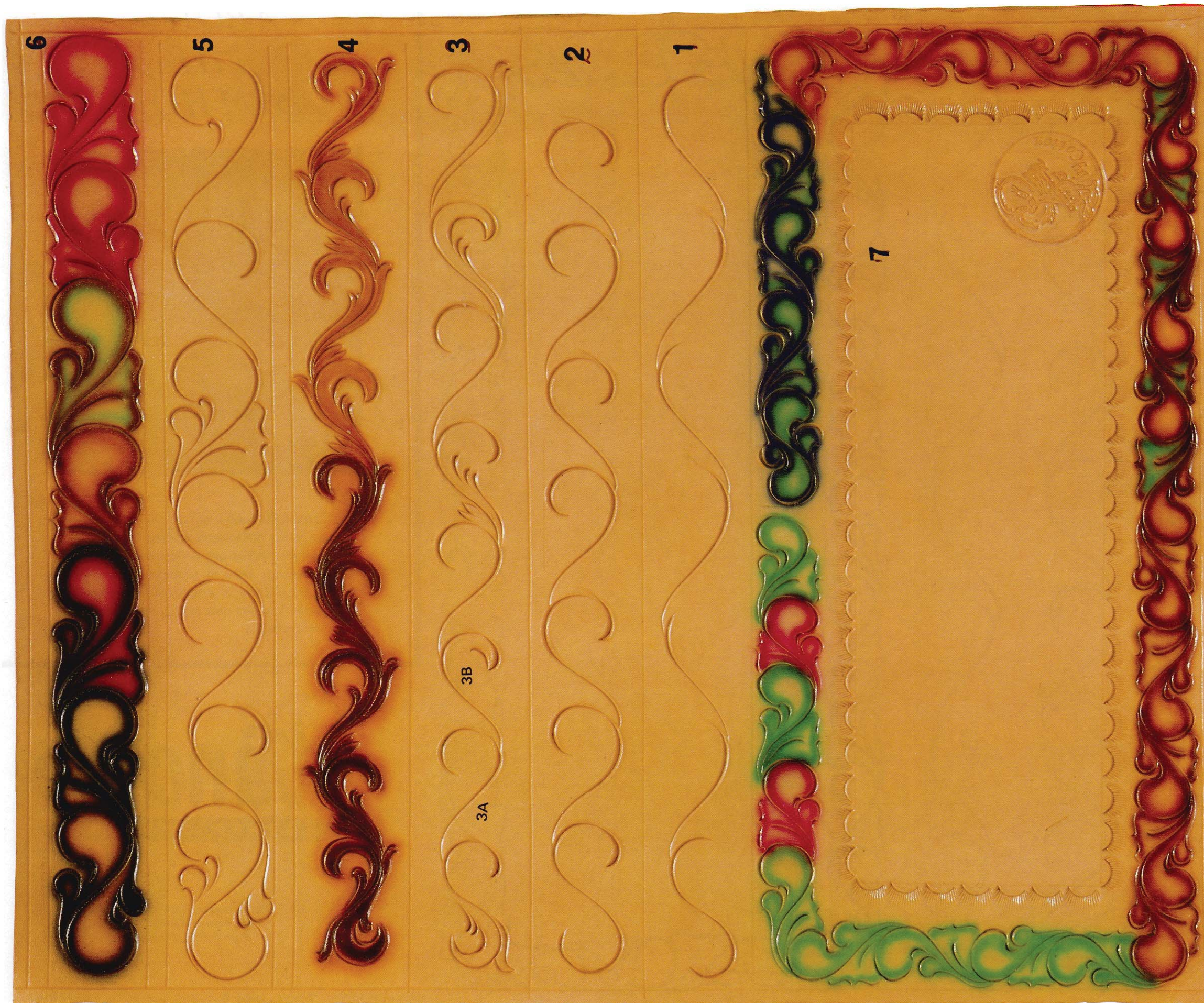
Front – full sized, front – tiled, back – full sized, back – tiled

(Some Doodle Pages do not have backs)

Please note: When printing on a home printer, the edges may get cut off. To avoid this, make sure “Page Scaling” is set to “Shrink to Printable Area” in the Adobe Reader print dialogue box. This will decrease the size of the Doodle Page a very small amount.



You may take this PDF file to your local print shop to have the full-size pages printed for your own personal use.



SCROLL WORK WITH YOUR SWIVEL KNIFE
BY
LARRY "COTTON" MILLS

The two scroll patterns numbered 4 and 6 have been really popular with a lot of customers. There is no tooling involved, simply swivel knife cuts, and they look really good on ladies' designer belts about 1¼" in width. I have also found the scroll work looks good on different projects that only have a name, or little tooling, with the scroll around the border, as shown in No. 7. I air brushed them to show you how they look in different colors. A Paasche air brush was used and in dyeing them you simply spray the knife cuts with your base coat and mist the centers of the pattern lighter colors.

In designing this pattern you start off with an S and in making your next leaf you come off the bottom hook of your S about 1/3 of the way with a cut that resembles a fish hook (3A), next cut is a fish hook shaped cut facing the opposite direction (3B). Make sure they are about the same length. After you have the first and second steps completed it is easy to fill in the rest. NOTE: that No. 6 and No. 4 are both made from the S, and fish hook cuts, I have made 1¼" belts and 1½" belts with this scroll work, and in making the scroll small, you can border stamp on each side of the scroll and it looks even better.

NOTE:
STEPS 1 AND 2 ARE YOUR BASIC STEPS FOR
BOTH 4 AND 6 SCROLL'S.

6



5



4



3

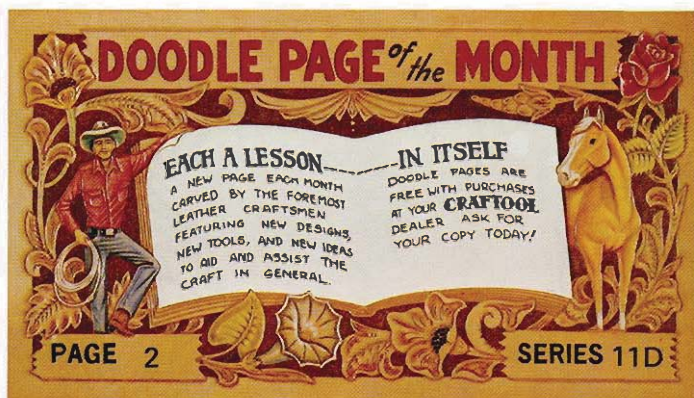
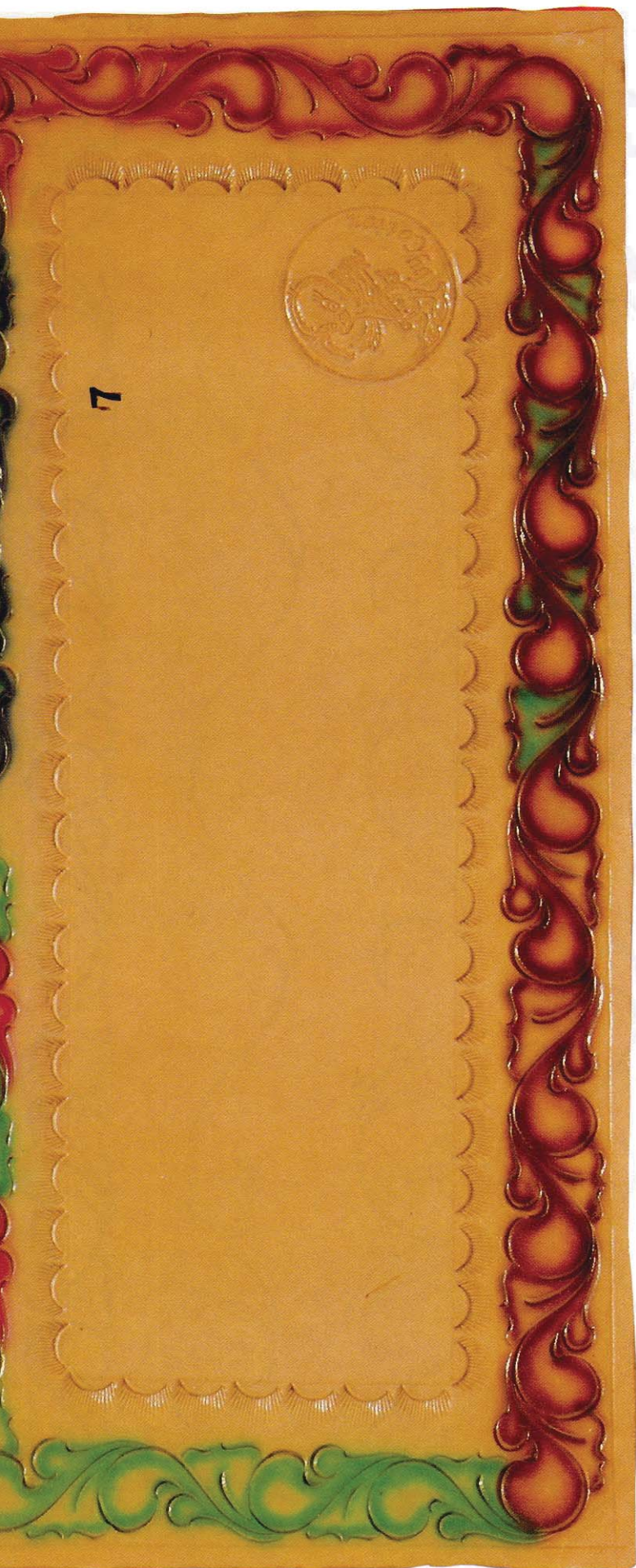


2



1



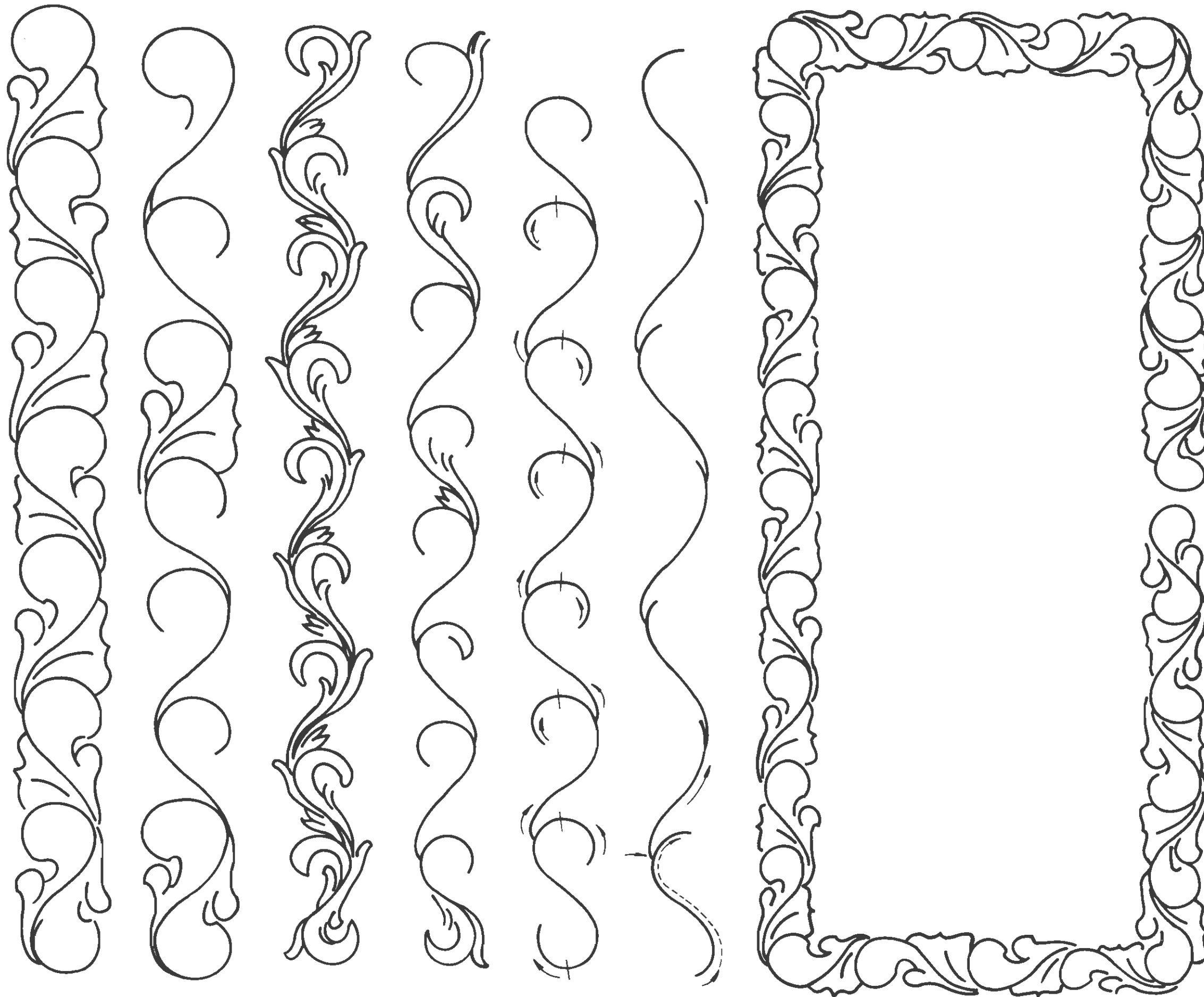


SCROLL WORK WITH YOUR SWIVEL KNIFE
BY
LARRY "COTTON" MILLS

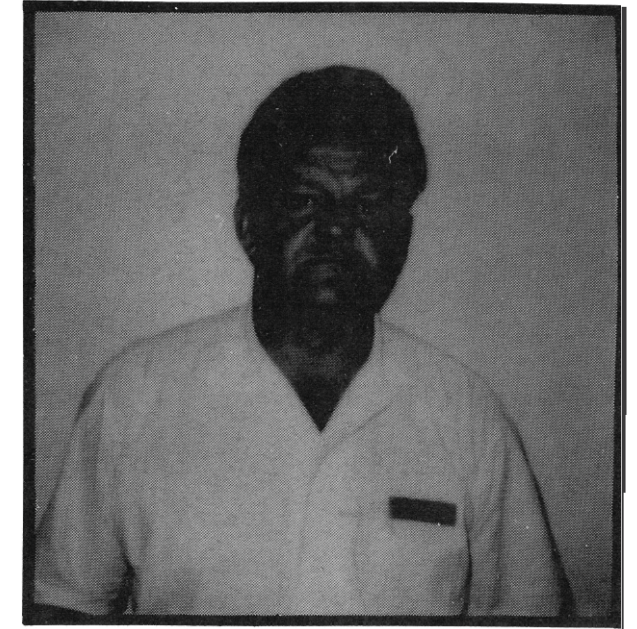
The two scroll patterns numbered 4 and 6 have been really popular with a lot of customers. There is no tooling involved, simply swivel knife cuts, and they look really good on ladies' designer belts about 1¼" in width. I have also found the scroll work looks good on different projects that only have a name, or little tooling, with the scroll around the border, as shown in No. 7. I air brushed them to show you how they look in different colors. A Paasche air brush was used and in dyeing them you simply spray the knife cuts with your base coat and mist the centers of the pattern lighter colors.

In designing this pattern you start off with an S and in making your next leaf you come off the bottom hook of your S about 1/3 of the way with a cut that resembles a fish hook (3A), next cut is a fish hook shaped cut facing the opposite direction (3B). Make sure they are about the same length. After you have the first and second steps completed it is easy to fill in the rest. NOTE: that No. 6 and No. 4 are both made from the S, and fish hook cuts, I have made 1¼" belts and 1½" belts with this scroll work, and in making the scroll small, you can border stamp on each side of the scroll and it looks even better.

NOTE:
STEPS 1 AND 2 ARE YOUR BASIC STEPS FOR
BOTH 4 AND 6 SCROLL'S.



ABOUT THE AUTHOR



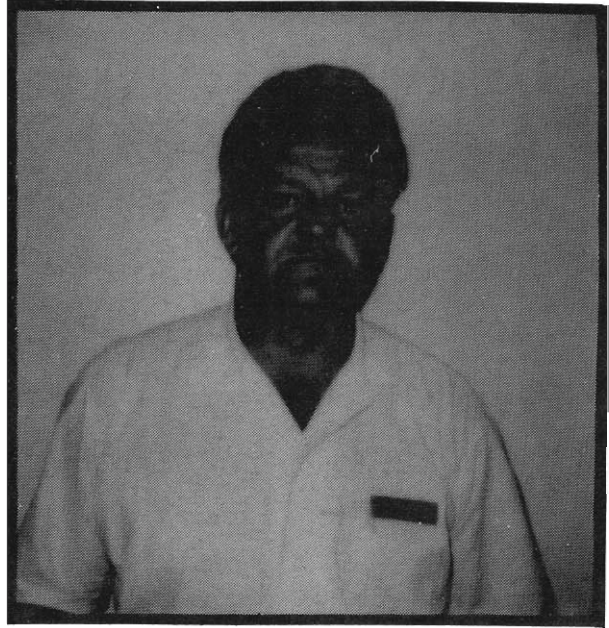
Larry Mills resides in Tenn. Colony Texas. Larry has done leathercrafting for the last 13 years and at one point owned his own leathercraft store in Andrews Texas , for 3 years. Larry is a boot and shoe repair person and also does custom leathercraft as his occupation.



Distributed by Tandy Leather Co.
A Division of Tandy Crafts, Inc.
Fort Worth, Texas 76140



ABOUT THE AUTHOR



Larry Mills resides in Tenn. Colony Texas. Larry has done leathercrafting for the last 13 years and at one point owned his own leathercraft store in Andrews Texas , for 3 years. Larry is a boot and shoe repair person and also does custom leathercraft as his occupation.



Distributed by Tandy Leather Co.
A Division of Tandy Crafts, Inc.
Fort Worth, Texas 76140