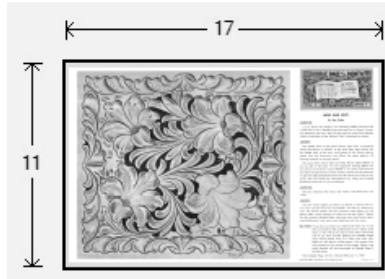




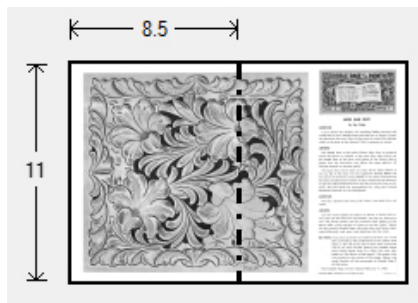
Doodle Page Digital Download

This PDF file contains 1 (one) Doodle Page. The PDF has been put together to give you options when it comes to printing. Pages and patterns that are larger than 8½x11 have been provided in two formats:



1) Full Size

If you would like to have a full size print out, take the full size pages to your local print shop and they can print it for you. All full size Doodle Pages are 11x17



2) Tiled

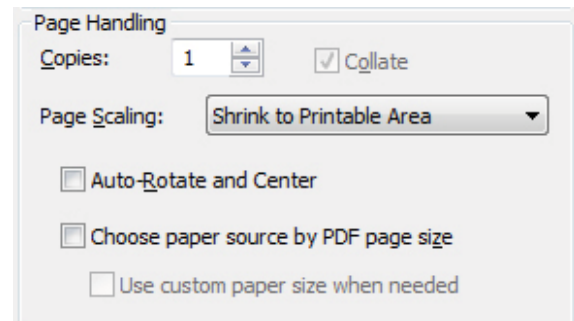
The tiled pages give you the option of printing the full sized Doodle Pages at home. You print the tiled pages and then assemble them to make the larger patterns.

The Doodle Page PDF files are typically laid out like this:

Front – full sized, front – tiled, back – full sized, back – tiled

(Some Doodle Pages do not have backs)

Please note: When printing on a home printer, the edges may get cut off. To avoid this, make sure “Page Scaling” is set to “Shrink to Printable Area” in the Adobe Reader print dialogue box. This will decrease the size of the Doodle Page a very small amount.



You may take this PDF file to your local print shop to have the full-size pages printed for your own personal use.

REALISTIC BUTTERFLIES
 by
 Charles E. Heschke

My name is Charles E. Heschke. I am a leather carver and have been for 20 years. Over the last 5 years I have developed a new technique in carving which could be more "true carving" than the traditional carving as we know it. It has been rewarding and the challenges are truly great.

Here is an example of what can be done with my technique.

I have put four butterflies inside a border which is put in with a Tandy Craftool no. 8074 Stitching Groover. Beginning with butterfly no. 1, I have marked the wings A, B, C and D. On wings A and B you can see the outline of the butterfly, the dotted lines are for dyeing. I used the Craftool Filigree 1/4" angle blade to cut wings C and D. When you cut the outline in on the butterfly wings you cut at a 30 degree angle or undercut. Now we begin step 2. Using these bevels (B61, B60, and B892) you bevel under as far as you can all the way around the outline of the wings. Next, using your swivel knife, very lightly cut in your nerves and veins on the wings. Now going to wings C and D on butterfly no. 2, with your swivel knife or no. 2 medium duty craft knife, slowly cut the wings all the way to the body and I do mean slowly. After you have cut the wings completely away from the leather, stamp your background in; you may use any backgrounder of your choice. The two that I used were A118 under the C wing and A102 under the D wing. Figure no. 3 shows all four wings lifted up in the same manner as the two on figure no. 2 (see inset photo). On figure 3 for the background under A and B wings I used Craftool M883 and M880 and on C and D wing I used M885 and M884. On wing C and D you can give them a hair effect with a craftool stippler no. 8070. Now going to figure 4; as you can see the butterfly is completed with the background tool G605. For the eyes on the butterfly I used S932. Do not stamp this in but put the stamp down where you want



Radiating veins or nerves cut in very lightly with Craftool Filigree 1/4" Blade "Angle".

The body is put in with a Stitching Groover.

The dotted lines are for dyeing.

When you cut in the outline cut at a 30-degree angle, in other words undercut.

When using your Filigree 1/4" angle blade I suggest that you keep it very sharp and the best way I know is to use the Craftool Keen Edge Sharpener then strap it with Jeweler's Rouge very often.

Use under cut bevelers for all main lines.

You can use any background tool you want.

With your swivel knife or no. 2 Medium-Duty Craft Knife, cut the wings all the way to the body as I did on C. and D. then lift up to use your backgrounder.

When you do the body you are free to make it anyway you like. You can put hair on it or cover it with dots or whatever.

You can give the wings a hair effect with the Craftool Stippler.

8 5 H 7 1

C. HESCHKE

Labels: A, B, C, D, B61, B60, B982, A118, A102, M883, M880, M885, M884, S932 For Eyes, G605.

Color swatches: 1. Black, 2. Light Green, 3. Yellow, 4. Light Brown, 5. Dark Brown, 6. White, 7. White Blue Red, 8. Light Blue, 9. Red.

Radiating veins or nerves cut in very lightly with
Craftool Filigree 1/4" Blade "Angle".

The body is put in
with a
Stitching
Groover.

The dotted
lines are
for dyeing.

When you cut in the outline
cut at a 30-degree angle, in
other words under cut.

When using your Filigree
1/4" angle blade I suggest
that you keep it very
sharp and the best way
I know is to use the
Craftool Keen Edge
Sharpener then strap it
with Jeweler's Rouge
very often.

With your swi
all the way to
background.

M883 M880

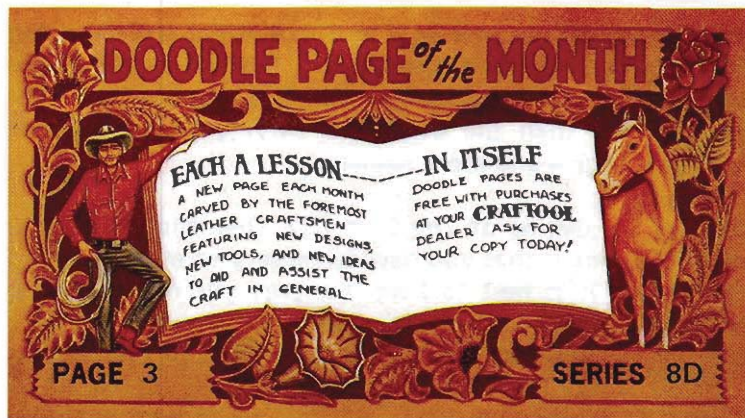
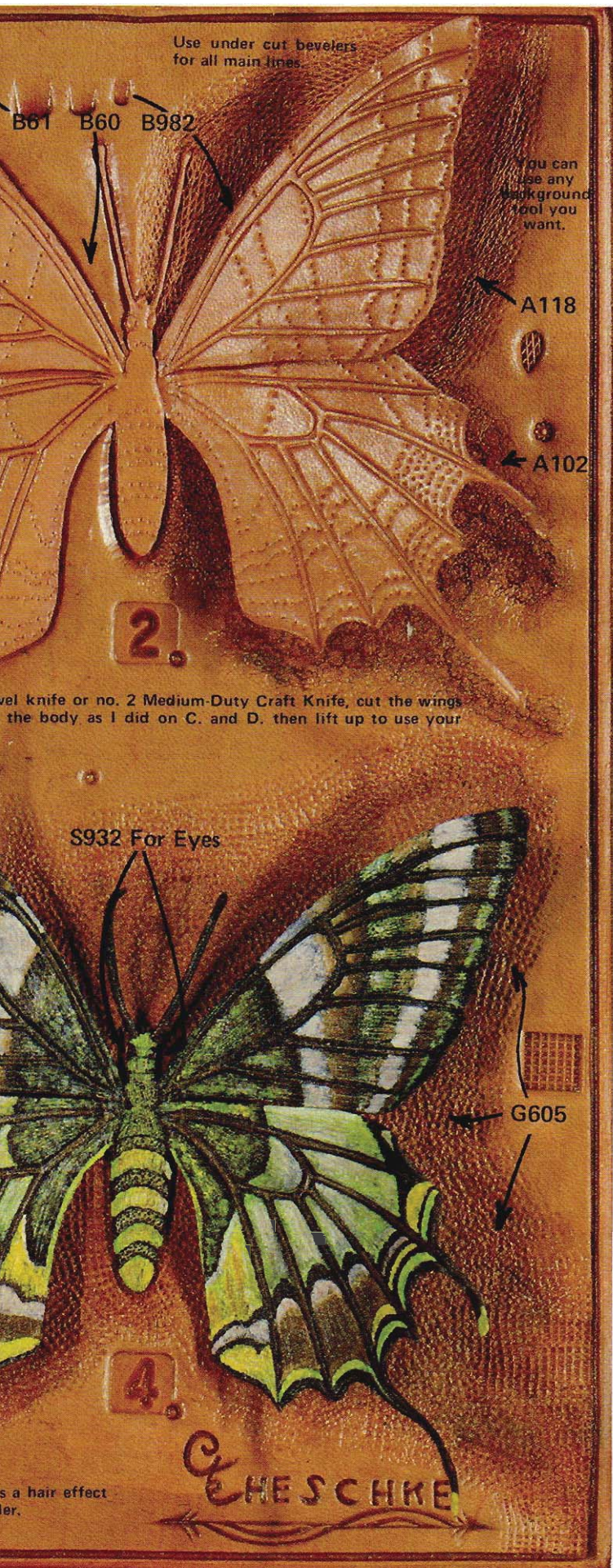
When you
do the body
you are free
to make it
anyway you
like. You
can put
hair on it
or cover it
with dots or
whatever.

- 1. Green
- 2. Light Green
- 3. Yellow
- 4. Light Brown
- 5. Brown
- 6. White
- 7. White Blue Red
- 8. Light Blue
- 9. Red

M885 M884

8 5 H 7 I

You can give the wing
with the Craftool Stipp



REALISTIC BUTTERFLIES
by
Charles E. Heschke

My name is Charles E. Heschke. I am a leather carver and have been for 20 years. Over the last 5 years I have developed a new technique in carving which could be more "true carving" than the traditional carving as we know it. It has been rewarding and the challenges are truly great.

Here is an example of what can be done with my technique.

I have put four butterflies inside a border which is put in with a Tandy Craftool no. 8074 Stitching Groover. Beginning with butterfly no. 1, I have marked the wings A, B, C and D. On wings A and B you can see the outline of the butterfly, the dotted lines are for dyeing. I used the Craftool Filigree 1/4" angle blade to cut wings C and D. When you cut the outline in on the butterfly wings you cut at a 30 degree angle or undercut. Now we begin step 2. Using these bevels (B61, B60, and B892) you bevel under as far as you can all the way around the outline of the wings. Next, using your swivel knife, very lightly cut in your nerves and veins on the wings. Now going to wings C and D on butterfly no. 2, with your swivel knife or no. 2 medium duty craft knife, slowly cut the wings all the way to the body and I do mean slowly. After you have cut the wings completely away from the leather, stamp your background in; you may use any backgrounder of your choice. The two that I used were A118 under the C wing and A102 under the D wing. Figure no. 3 shows all four wings lifted up in the same manner as the two on figure no. 2 (see inset photo). On figure 3 for the background under A and B wings I used Craftool M883 and M880 and on C and D wing I used M885 and M884. On wing C and D you can give them a hair effect with a craftool stippler no. 8070. Now going to figure 4; as you can see the butterfly is completed with the background tool G605. For the eyes on the butterfly I used S932. Do not stamp this in but put the stamp down where you want



the eye and just rotate it back and forth which will be almost like a burnish. I have done many butterflies, birds and animals with this technique and as you can see its a little more involve than the traditional carving, but it is much more challenging and more realistic.

Now for the dyeing of The Butterfly. One thing I'd like to emphasize here is that you have to be very careful when you are dyeing. It is best to keep the part you're not dyeing covered so that you will not get dye on these parts of the carving.

Dry brushing means that you fill your brush with dye. You wipe most of it off using the very little that is left on the brush. As you can see by the carving, I have 9 circles numbering from 1 thru 9. No. 1 is Cova acrylic black dye, which is dry brushed half with light green. Before I go any further, I used only a solvent black, all the rest is Cova acrylic dye. Going to no. 2, I dry brushed half the acrylic yellow on to the acrylic light green. No. 3 has a little bit of light brown dry brushed on the yellow. No. 4 has a little yellow dry brushed on the light brown and a little dark brown on the light brown also. No. 5 is straight dark brown. No. 6 is white with a little of the light green dry brushed on to it. No. 7 is white, red and blue mixed together which gives it a purplish color. No. 8 is light blue, on the bottom of the circle is red mixed with the blue from the top. No. 9 is red.

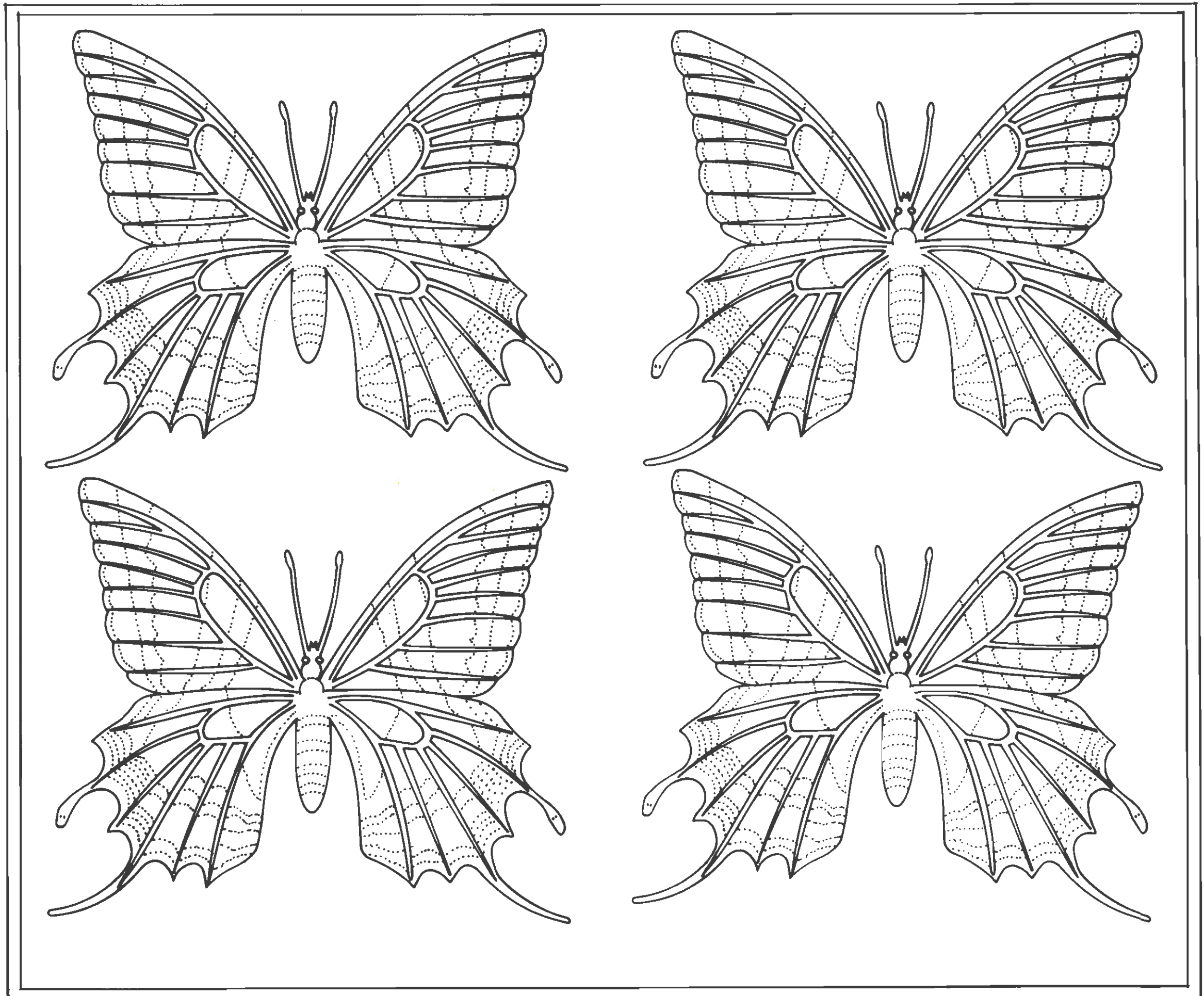
Now that you have the colors we will begin with figure No. 3 on the A wing. As you can see I went step by step in the dyeing procedure down the wing. I added the colors with a dry brush to blend them in as I went along and the same for wing D. As you proceed along you will see how the color of the butterfly takes shape as shown in figure 4. Apply your finish and dry. You lift the wings to set them while the finish dries.

I hope you will enjoy the technique for it is very rewarding and I have labored many hours and years developing it. The butterflies are only a small step into the world to "True Leather Carving" but a rewarding one.

Best of Luck
Charles E. Heschke
Master Leather Carver



Charles E. Heschke, 47, is a materials handler living in Hales Corners, Wisconsin. His work has won 1st Place at the Wisconsin State Fair, been featured in a magazine, and has earned a private showing in the Milwaukee County Museum. His 20 years of experience in leathercraft is certainly evident in this example of "Realistic Butterflies". Charles' other interests include poetry, oil painting, sketching, and sculpturing.



the eye and just rotate it back and forth which will be almost like a burnish. I have done many butterflies, birds and animals with this technique and as you can see its a little more involve than the traditional carving, but it is much more challenging and more realistic.

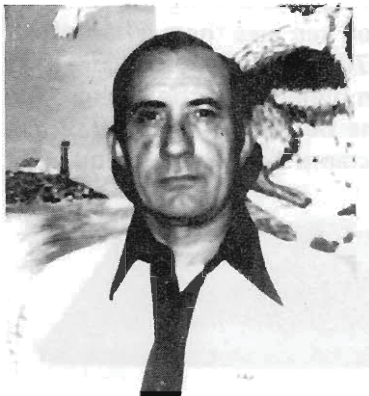
Now for the dyeing of The Butterfly. One thing I'd like to emphasize here is that you have to be very careful when you are dyeing. It is best to keep the part you're not dyeing covered so that you will not get dye on these parts of the carving.

Dry brushing means that you fill your brush with dye. You wipe most of it off using the very little that is left on the brush. As you can see by the carving, I have 9 circles numbering from 1 thru 9. No. 1 is Cova acrylic black dye, which is dry brushed half with light green. Before I go any further, I used only a solvent black, all the rest is Cova acrylic dye. Going to no. 2, I dry brushed half the acrylic yellow on to the acrylic light green. No. 3 has a little bit of light brown dry brushed on the yellow. No. 4 has a little yellow dry brushed on the light brown and a little dark brown on the light brown also. No. 5 is straight dark brown. No. 6 is white with a little of the light green dry brushed on to it. No. 7 is white, red and blue mixed together which gives it a purplish color. No. 8 is light blue, on the bottom of the circle is red mixed with the blue from the top. No. 9 is red.

Now that you have the colors we will begin with figure No. 3 on the A wing. As you can see I went step by step in the dyeing procedure down the wing. I added the colors with a dry brush to blend them in as I went along and the same for wing D. As you proceed along you will see how the color of the butterfly takes shape as shown in figure 4. Apply your finish and dry. You lift the wings to set them while the finish dries.

I hope you will enjoy the technique for it is very rewarding and I have labored many hours and years developing it. The butterflies are only a small step into the world to " True Leather Carving" but a rewarding one.

Best of Luck
Charles E. Heschke
Master Leather Carver



Charles E. Heschke, 47, is a materials handler living in Hales Corners, Wisconsin. His work has won 1st Place at the Wisconsin State Fair, been featured in a magazine, and has earned a private showing in the Milwaukee County Museum. His 20 years of experience in leathercraft is certainly evident in this example of "Realistic Butterflies". Charles' other interests include poetry, oil painting, sketching, and sculpturing.

