



Doodle Page Digital Download

This PDF file contains 1 (one) Doodle Page. The PDF has been put together to give you options when it comes to printing. Pages and patterns that are larger than 8½x11 have been provided in two formats:



1) Full Size

If you would like to have a full size print out, take the full size pages to your local print shop and they can print it for you. All full size Doodle Pages are 11x17



2) Tiled

The tiled pages give you the option of printing the full sized Doodle Pages at home. You print the tiled pages and then assemble them to make the larger patterns.

The Doodle Page PDF files are typically laid out like this:

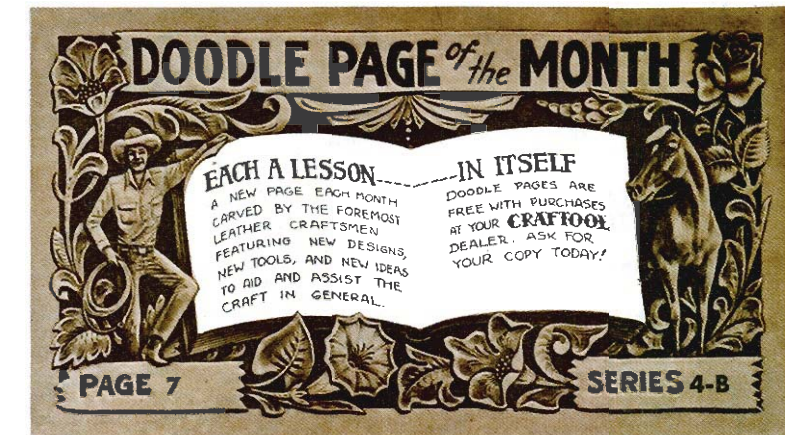
Front – full sized, front – tiled, back – full sized, back – tiled

(Some Doodle Pages do not have backs)

Please note: When printing on a home printer, the edges may get cut off. To avoid this, make sure “Page Scaling” is set to “Shrink to Printable Area” in the Adobe Reader print dialogue box. This will decrease the size of the Doodle Page a very small amount.



You may take this PDF file to your local print shop to have the full-size pages printed for your own personal use.



NEW PERSPECTIVE
by Al Stohlman

This month we present a little variation in the treatment of the floral design. The effect of the perspective is enhanced by the addition of the thick edge (shown by the heavy shading). This effect must be created with "double beveling". In other words, certain lines of the design must be beveled on BOTH sides! The tracing pattern on the opposite side of the page shows just which of these lines must be beveled on both sides to create the desired effects. When all carving and stamping has been completed, this thick appearing edge is dyed a dark color to give the appearance of additional depth.

You will notice at the top of the page that the background has been matted with the figure carving matting tools. About midway down the page the background changes to the A104 tool. At the lower part of the page the background goes into the A888. You will note these tool impressions blend together where they join. The reason for using these different tools (coarsest one in foreground) is to add to the illusion of the perspective . . . diminishing into the distance.

The opposite side of the page lists all of the tools used here. You will notice the smaller tools are used at the top of the page (part of design presumably at greatest distance) . . . medium size tools in center of page, and largest tools in the foreground or lower portion of the page. Example: the Veiners on the scrolls. V461 on the farthest scroll; V821 on next scroll; and V414 on the two nearest scrolls. The same technique was used with the other tools. The reason for this is to give the illusion of distance. Study the Photo Pattern . . . note the tools used, and where. Always bear in mind that all of the tool listed do not have to be used. Other tools can be substituted as you so desire. The tools shown were used to give the maximum effect and illusion of perspective.

The Tracing Pattern on the reverse side clearly shows all of the lines you must trace and cut. It also shows which lines to cut lightly . . . and which lines to double bevel (bevel on both sides). It also shows which lines NOT to bevel. It is hoped this design will add to your enjoyment of leather carving and add a NEW PERSPECTIVE. Perhaps it will give you ideas for designs of your own.

**SEE YOUR CRAFTOOL DEALER
FOR NEW IDEAS
IN LEATHER ARTISTRY**

AL STOHLMAN

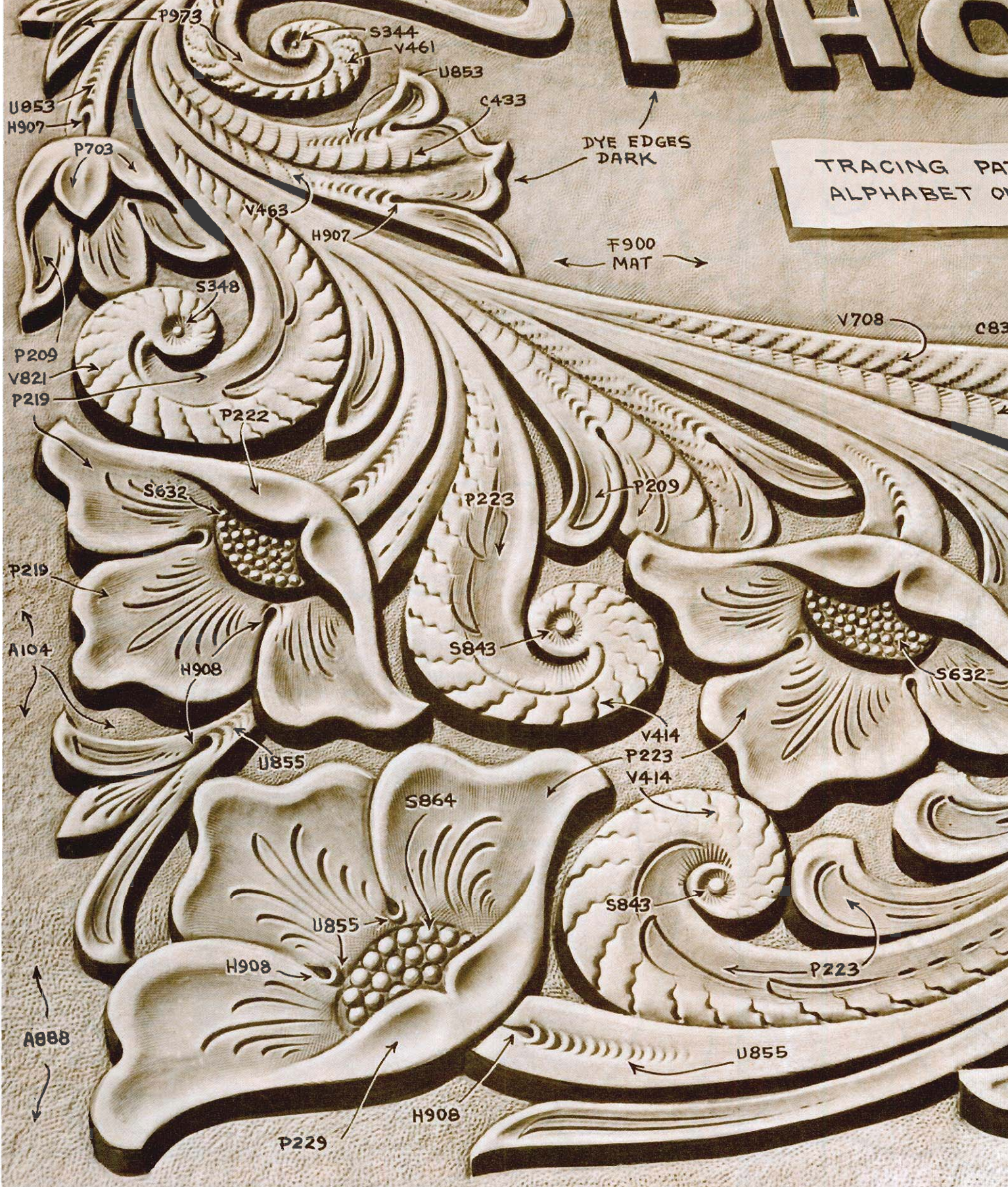
LINE STEMS WITH
BLADE No. 100L

PHO

DYE EDGES
DARK

TRACING PAT
ALPHABET ON

F900
MAT



P973

S344

V461

U853

C433

U853
H907

P703

V463

H907

S348

P209
V821

P219

P222

S632

P223

P209

V708

C83

P219

A104

H908

S843

S632

U855

S864

V414

P223

V414

H908

U855

S843

P223

A888

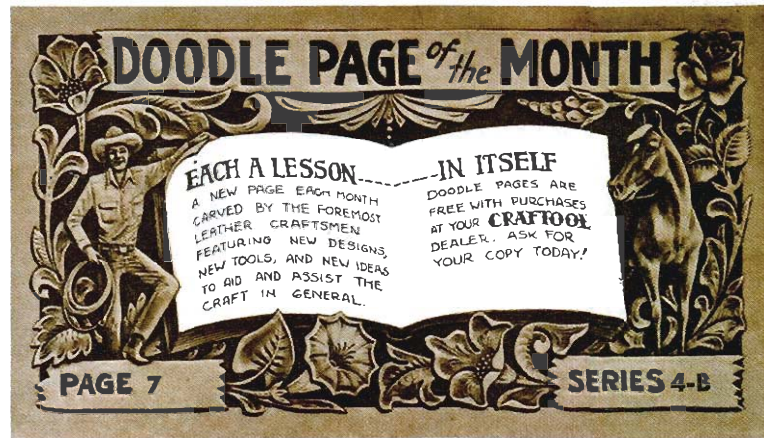
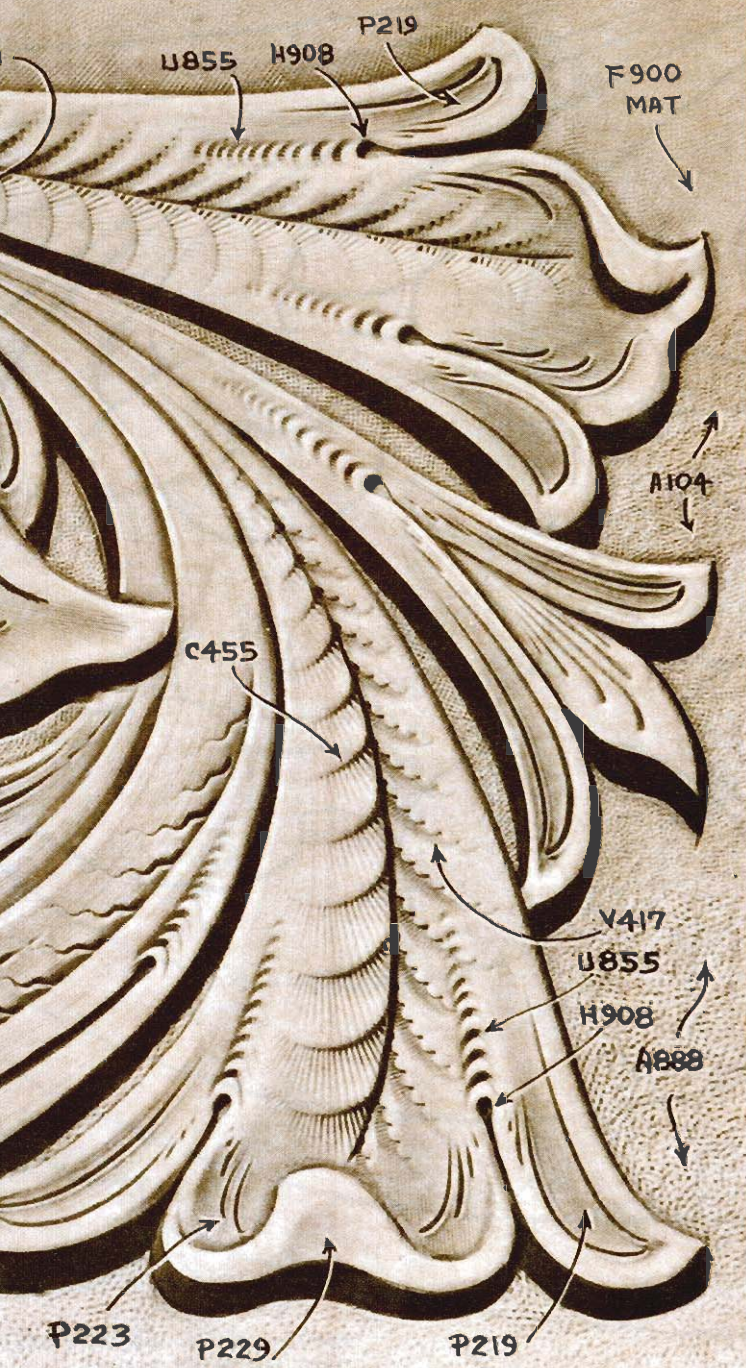
U855

P229

H908

OTOS

PATTERNS AND COMPLETE
ON THE REVERSE SIDE



NEW PERSPECTIVE

by Al Stohlman

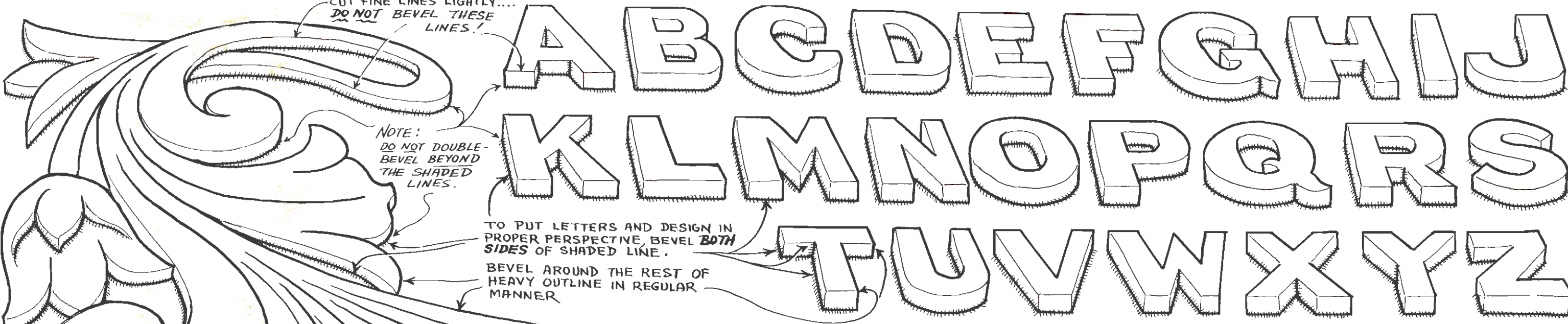
This month we present a little variation in the treatment of the floral design. The effect of the perspective is enhanced by the addition of the thick edge (shown by the heavy shading). This effect must be created with "double beveling". In other words, certain lines of the design must be beveled on BOTH sides! The tracing pattern on the opposite side of the page shows just which of these lines must be beveled on both sides to create the desired effects. When all carving and stamping has been completed, this thick appearing edge is dyed a dark color to give the appearance of additional depth.

You will notice at the top of the page that the background has been matted with the figure carving matting tools. About midway down the page the background changes to the A104 tool. At the lower part of the page the background goes into the A888. You will note these tool impressions blend together where they join. The reason for using these different tools (coarsest one in foreground) is to add to the illusion of the perspective . . . diminishing into the distance.

The opposite side of the page lists all of the tools used here. You will notice the smaller tools are used at the top of the page (part of design presumably at greatest distance) . . . medium size tools in center of page, and largest tools in the foreground or lower portion of the page. Example: the Veiners on the scrolls. V461 on the farthest scroll; V821 on next scroll; and V414 on the two nearest scrolls. The same technique was used with the other tools. The reason for this is to give the illusion of distance. Study the Photo Pattern . . . note the tools used, and where. Always bear in mind that all of the tool listed do not have to be used. Other tools can be substituted as you so desire. The tools shown were used to give the maximum effect and illusion of perspective.

The Tracing Pattern on the reverse side clearly shows all of the lines you must trace and cut. It also shows which lines to cut lightly . . . and which lines to double bevel (bevel on both sides). It also shows which lines NOT to bevel. It is hoped this design will add to your enjoyment of leather carving and add a NEW PERSPECTIVE. Perhaps it will give you ideas for designs of your own.

**SEE YOUR CRAFTOOL DEALER
FOR NEW IDEAS
IN LEATHER ARTISTRY**



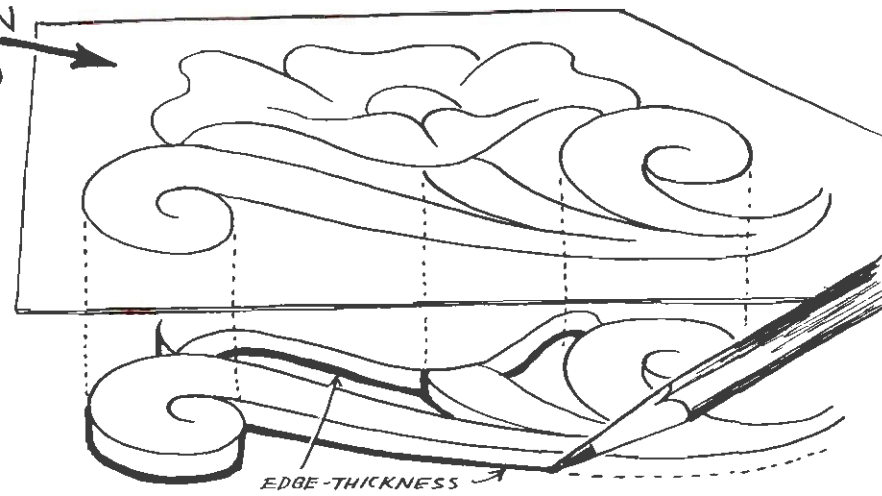
CUT FINE LINES LIGHTLY....
DO NOT BEVEL THESE
LINES!

NOTE:
DO NOT DOUBLE-
BEVEL BEYOND
THE SHADED
LINES.

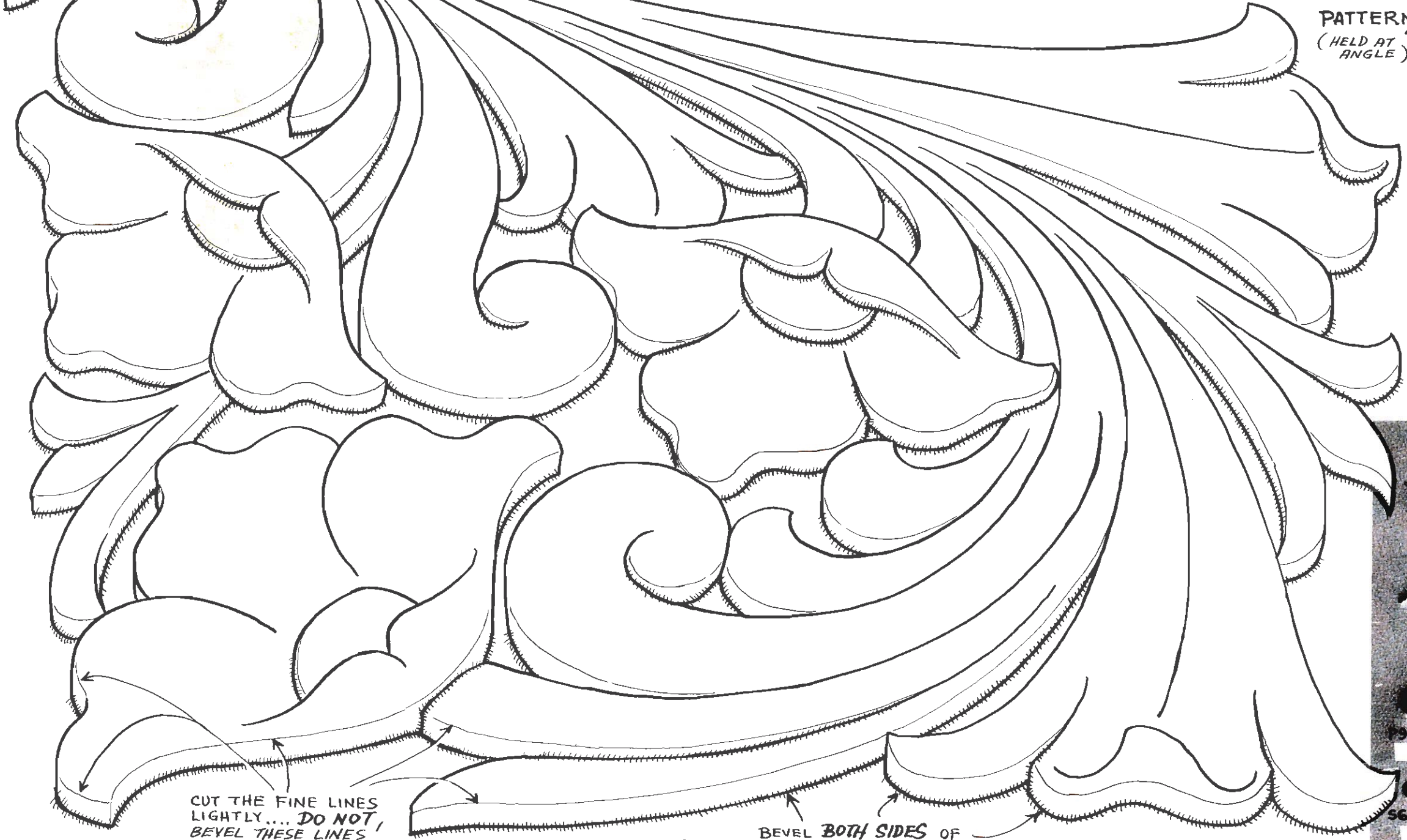
TO PUT LETTERS AND DESIGN IN
PROPER PERSPECTIVE, BEVEL **BOTH**
SIDES OF SHADED LINE.

BEVEL AROUND THE REST OF
HEAVY OUTLINE IN REGULAR
MANNER

PATTERN
(HELD AT ANGLE)



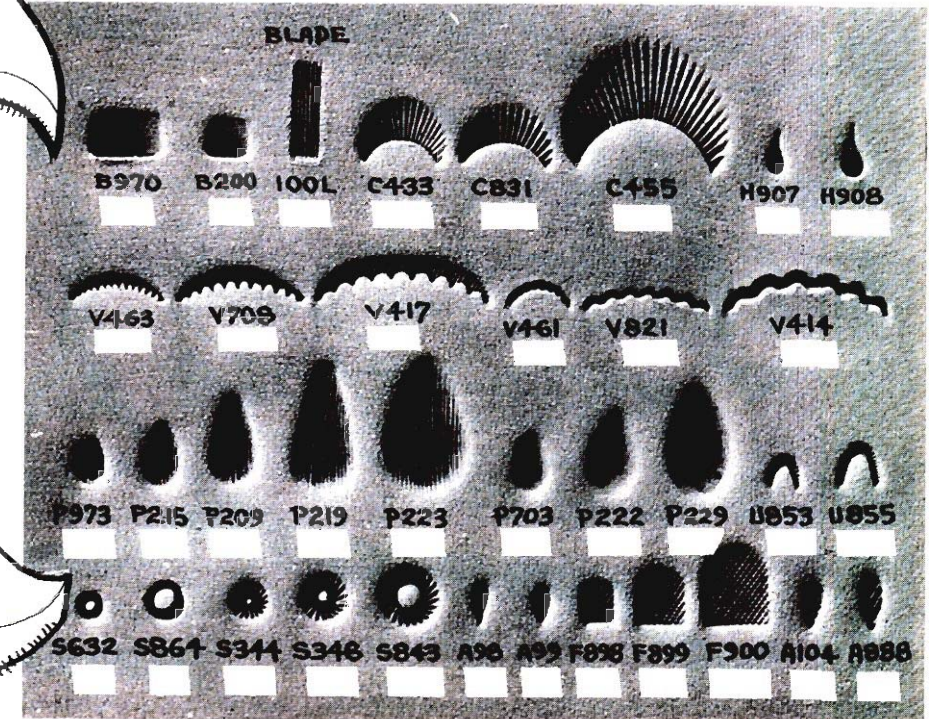
YOU CAN MAKE YOUR OWN PERSPECTIVE DESIGNS
BY HOLDING A PATTERN AT AN ANGLE, JUST BELOW
EYE-LEVEL, AS SHOWN ABOVE. RE-DRAW THE DESIGN
ON PAPER, COPYING THE LINES FROM THE ANGLED PAT-
TERN. CREATE THE EDGE-THICKNESS AS SHOWN BY
HEAVY LINE ABOVE.

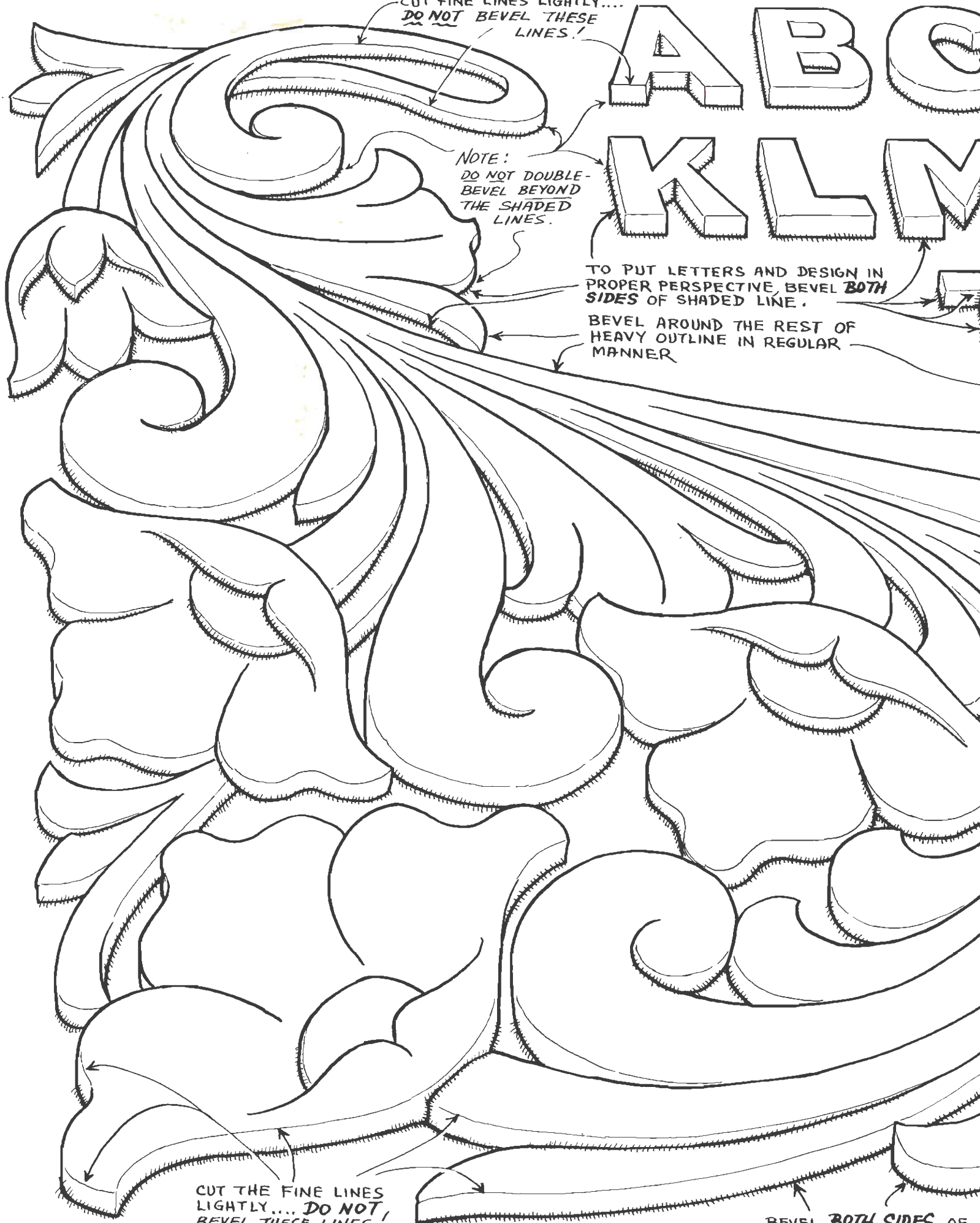


CUT THE FINE LINES
LIGHTLY.... DO NOT!
BEVEL THESE LINES!

BEVEL **BOTH SIDES** OF
THE SHADED LINES

STUDY PHOTO PATTERN ON REVERSE SIDE!





CUT FINE LINES LIGHTLY....
DO NOT BEVEL THESE
LINES!

A B C

K L M

NOTE:
DO NOT DOUBLE-
BEVEL BEYOND
THE SHADED
LINES.

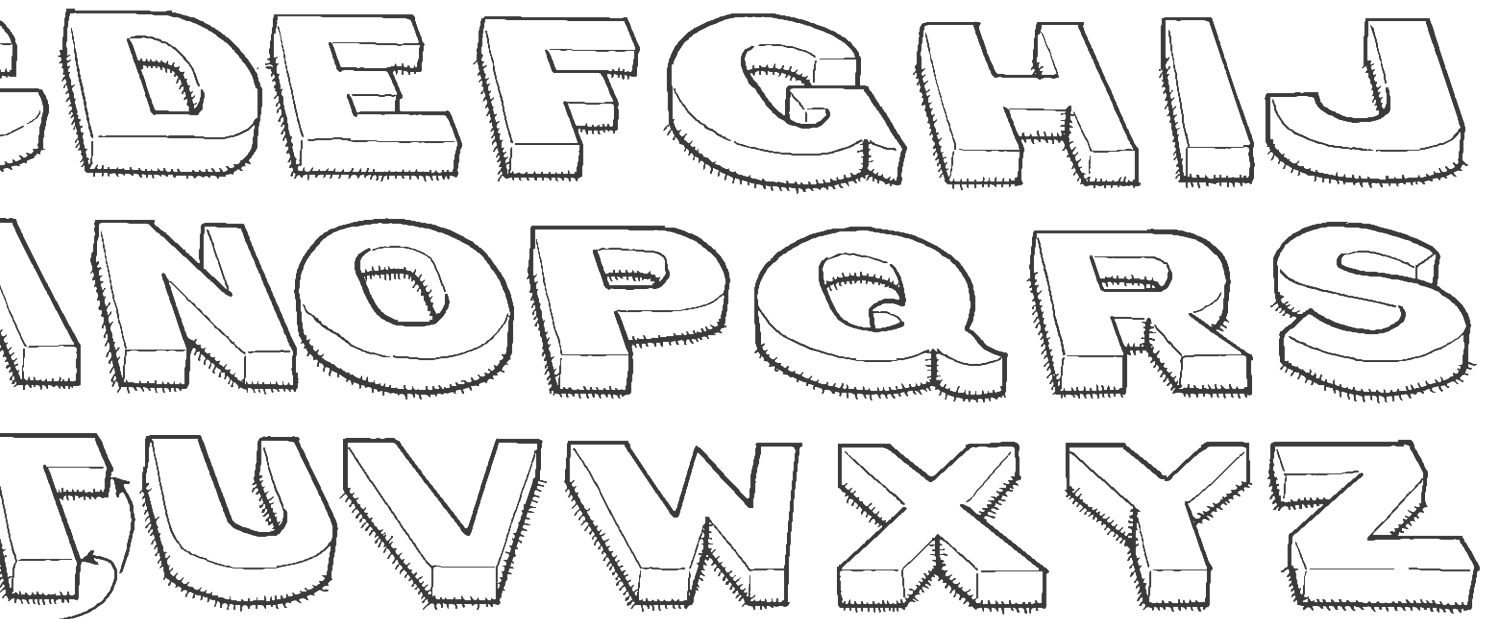
TO PUT LETTERS AND DESIGN IN
PROPER PERSPECTIVE, BEVEL **BOTH**
SIDES OF SHADED LINE.

BEVEL AROUND THE REST OF
HEAVY OUTLINE IN REGULAR
MANNER

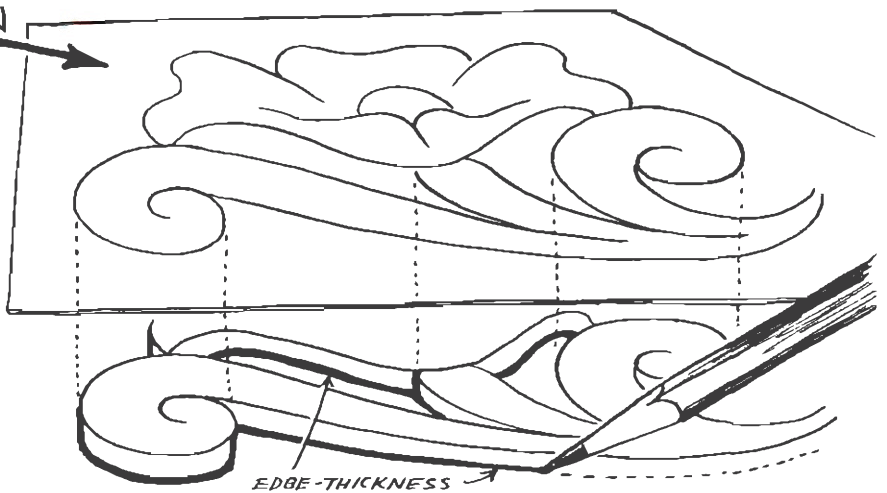
CUT THE FINE LINES
LIGHTLY.... DO NOT
BEVEL THESE LINES!

BEVEL **BOTH SIDES** OF
THE SHADED LINES

STUDY PHOTO PATTERN ON REVERSE SIDE!



PATTERN
(HELD AT ANGLE)



YOU CAN MAKE YOUR OWN PERSPECTIVE DESIGNS BY HOLDING A PATTERN AT AN ANGLE, JUST BELOW EYE-LEVEL, AS SHOWN ABOVE. RE-DRAW THE DESIGN ON PAPER, COPYING THE LINES FROM THE ANGLED PATTERN. CREATE THE EDGE-THICKNESS AS SHOWN BY HEAVY LINE ABOVE.

