



Doodle Page Digital Download

This PDF file contains 1 (one) Doodle Page. The PDF has been put together to give you options when it comes to printing. Pages and patterns that are larger than 8½x11 have been provided in two formats:



1) Full Size

If you would like to have a full size print out, take the full size pages to your local print shop and they can print it for you. All full size Doodle Pages are 11x17



2) Tiled

The tiled pages give you the option of printing the full sized Doodle Pages at home. You print the tiled pages and then assemble them to make the larger patterns.

The Doodle Page PDF files are typically laid out like this:

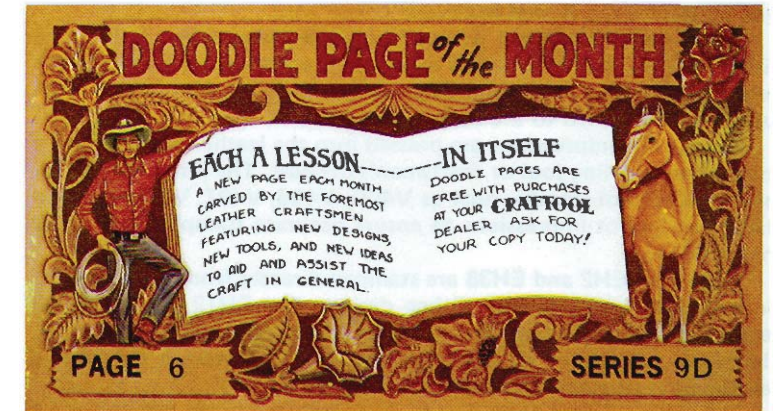
Front – full sized, front – tiled, back – full sized, back – tiled

(Some Doodle Pages do not have backs)

Please note: When printing on a home printer, the edges may get cut off. To avoid this, make sure “Page Scaling” is set to “Shrink to Printable Area” in the Adobe Reader print dialogue box. This will decrease the size of the Doodle Page a very small amount.



You may take this PDF file to your local print shop to have the full-size pages printed for your own personal use.



"MY FAVORITE BELT DESIGNS"
by Elmer Heft

EH2 — 1½" or 1¼" belts. Stamp G529 with first template. Stamp G564 with second template. Use A102 by eye. D435 on border. G529 requires such deep impressions that heavy blows with a 20 oz. mallet are required. The template prevents the stamp from slipping out of position. A second template was used for G564 but could be free stamped with G602, G548, or G564. Med. brown antique stain on design. Dark brown Pro Dye on border.

EH46 — 1¼" and 1½" belts or wider. Dots for V407 at 45° from template. A102, G602, F909 and B961 stamped by template. Use V400 by eye. Additional A102 at V400 by eye. Four choices of color shown. At left: 2 coats dark brown antique plus one coat dark brown Pro Dye. Next panel: 3 coats of sheen only, shows design best. Then 2 panels with two coats saddle tan Pro Dye. At right: med. brown antique. The right end shows template transfer: A103 and G602 stamped and dots for V407. Both designs shown are from same template output.

EH33X — 1¼" belts or wider. All Craftool stamps shown at 45° fit cutouts in same template, namely: G645, G611, F915, F916 and F926. Dots for V745 transferred from template. Use A103, A800 and G602 by eye. Two coats antique stain and three coats of sheen. This design can be used for ¾" belt without border or one inch belt with narrow border.

EH38 — 1¼" belts or wider. Two designs shown. Each design requires two stamping guides (templates). G645, F871, F916 and N300 stamped from template. Use A102 at center of wheels by eye. (G611 can be used instead of G645). A most difficult design for experts to stamp without the stamping guides, but a cinch for beginners with guides. Three templates were used for these two designs. The G645 at 45° also has cutouts for F916. The G645 at 90° also has the cutouts for N300. F871 at 45° is on a third template.

EH30 — 1¼" belts or wider. Many choices or combos possible. Four separate templates placed in holding jig for G611-G602 shown at left of sample. Others require two templates. Use S630, A800 by eye. This is a beauty! But four templates were used for G611 and G602 at left. Only two templates for the others. Five stamps fit the same cutouts. Borders can be added for wider belts.

EH12 — 1½" belts taper to 1" or 1¼" (optional). This pattern is very difficult to stamp. Dots for V406 from template. F909 stamped directly from template. Belt can be tapered to one inch (or 1¼"). If outer V406 is omitted. See right end. Medium brown antique, then two coats of sheen followed by Hi-Liter when dry. Right end shows dots and F909 stamping from template. Note to new leathercrafters: F909 and B962 stamps are discontinued. Borders can be added for wider belts.

EH39 — 1¼", 1½" and 1¾" belts (taper optional). Easy stamping with guide (template). G645, G611 and B961 stamping from template. Use V407, F934 by eye. Decorative cuts optional. Checked affect with B961 by turning stamp 60° and hitting again. Three widths and many choices of patterns. The points of the diamonds are spaced 19/32" along length. The points are the target for V407. Free stamping on the other impressions.

EH33X G645 V745 A103

G611

F915

F926

F916-6602

EH38 G645 F871 F916 A102

N300

EH30 G611 G602

F916 5630

F915

F926

G645 A800

EH12 V406 F909

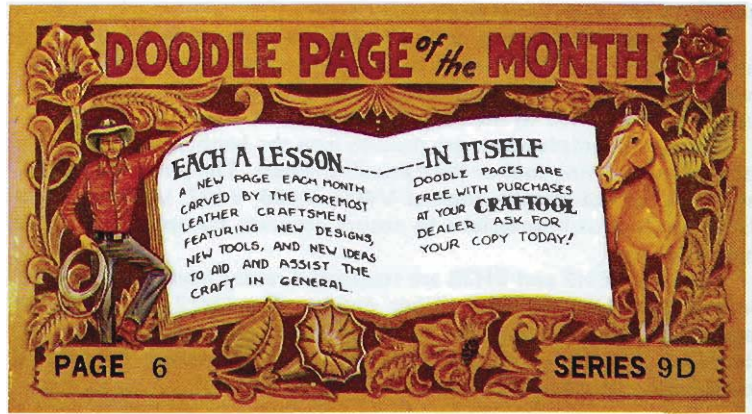
F916

N300

EH39 G645 V406 V407 B961 F934 C431

G611

DECORATIVE CUTS



"MY FAVORITE BELT DESIGNS"
by Elmer Heft

EH2 — 1½" or 1¼" belts. Stamp G529 with first template. Stamp G564 with second template. Use A102 by eye. D435 on border. G529 requires such deep impressions that heavy blows with a 20 oz. mallet are required. The template prevents the stamp from slipping out of position. A second template was used for G564 but could be free stamped with G602, G548, or G564. Med. brown antique stain on design. Dark brown Pro Dye on border.

EH46 — 1¼" and 1½" belts or wider. Dots for V407 at 45° from template. A102, G602, F909 and B961 stamped by template. Use V400 by eye. Additional A102 at V400 by eye. Four choices of color shown. At left: 2 coats dark brown antique plus one coat dark brown Pro Dye. Next panel: 3 coats of sheen only, shows design best. Then 2 panels with two coats saddle tan Pro Dye. At right: med. brown antique. The right end shows template transfer: A103 and G602 stamped and dots for V407. Both designs shown are from same template output.

EH33X — 1¼" belts or wider. All Craftool stamps shown at 45° fit cutouts in same template, namely: G645, G611, F915, F916 and F926. Dots for V745 transferred from template. Use A103, A800 and G602 by eye. Two coats antique stain and three coats of sheen. This design can be used for ¾" belt without border or one inch belt with narrow border.

EH38 — 1¼" belts or wider. Two designs shown. Each design requires two stamping guides (templates). G645, F871, F916 and N300 stamped from template. Use A102 at center of wheels by eye. (G611 can be used instead of G645). A most difficult design for experts to stamp without the stamping guides, but a cinch for beginners with guides. Three templates were used for these two designs. The G645 at 45° also has cutouts for F916. The G645 at 90° also has the cutouts for N300. F871 at 45° is on a third template.

EH30 — 1¼" belts or wider. Many choices or combos possible. Four separate templates placed in holding jig for G611-G602 shown at left of sample. Others require two templates. Use S630, A800 by eye. This is a beauty! But four templates were used for G611 and G602 at left. Only two templates for the others. Five stamps fit the same cutouts. Borders can be added for wider belts.

EH12 — 1½" belts taper to 1" or 1¼" (optional). This pattern is very difficult to stamp. Dots for V406 from template. F909 stamped directly from template. Belt can be tapered to one inch (or 1¼"). If outer V406 is omitted. See right end. Medium brown antique, then two coats of sheen followed by Hi-Liter when dry. Right end shows dots and F909 stamping from template. Note to new leathercrafters: F909 and B962 stamps are discontinued. Borders can be added for wider belts.

EH39 — 1¼", 1½" and 1¾" belts (taper optional). Easy stamping with guide (template). G645, G611 and B961 stamping from template. Use V407, F934 by eye. Decorative cuts optional. Checked affect with B961 by turning stamp 60° and hitting again. Three widths and many choices of patterns. The points of the diamonds are spaced 19/32" along length. The points are the target for V407. Free stamping on the other impressions.

Precision Stamping of intricate geometrical patterns can be accomplished quickly and accurately without guide lines or measuring, even by the inexperienced beginner.

The use of stamping guides (templates) placed in a holding jig with $\frac{3}{8}$ " to $1\frac{1}{4}$ " wide belt strips makes belt stamping easy without the tedious measuring and stamping to guide lines. The stamps are automatically turned to the correct angle.

Deep dot impressions are pressed into the leather with the sharp point of a modeling tool or draftsman's dividers. The pointed edges of the "V" Crafftool stamps, such as V400, V406, V407, V708, etc., are placed in the dot impressions to ensure accurate stamping with little chance of error.

Designs EH2 and EH38 are stamped directly from the template. No location dots required. Other designs like EH12 and all EH38 designs require very accurate stamping after removing belt from jig. Therefore, the use of jig and templates will not prevent the normal development of stamping skills.

Some of these designs would be a challenge to the best of expert stampers, like EH12, EH33X, and EH38. With the templates and jig, any leathercrafter can stamp near perfect designs. The rest of the designs on this page are also difficult.

The key to success with this method of stamping belts is the accuracy of the stamping guides. The guides used for these belt designs were carefully made. The cutouts and small holes were measured to die-maker's tolerances of .005". Pencil lines were not used. Scribing lines with a utility knife resulted in more accurate layout.

The cutouts were made with a utility knife to fit exactly the shape of the Crafftool stamp. Accurate spacing was achieved with the use of a good quality architect's scale which has fine line graduations. The sharp point of the utility knife marked locations right on target. Hair lines were scribed on the cardboard template in both directions; at intersection of these lines the needle point of a draftsman's dividers stabs holes in the template to locate the dot impressions.

These small holes can be enlarged to use the sharp end of a modeling tool. These dots locate the points at outer edges of the "V" stamping tool face.

Fine drafting tools and skills are required to make these guides. Fifty years of drafting experience helped a lot.

Good quality cardboard from an artists supply shop was used for these guides. Plastic would be more durable but difficult to draw on and cut. There is a white plastic 2 mm thick which I used, but can't locate the source. A friend gave me some.

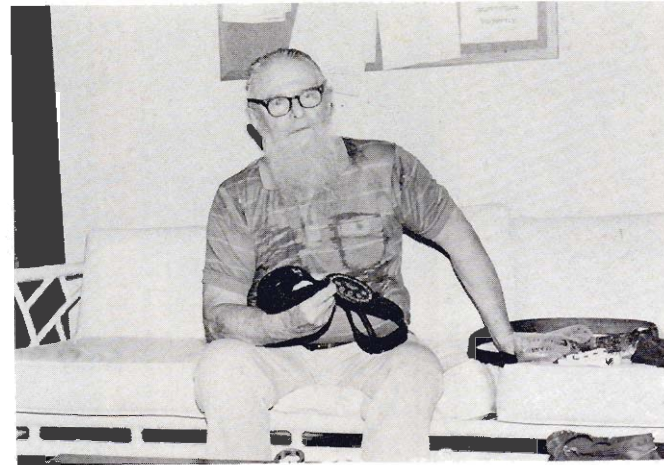
For the star designs there are up to 470 holes punched in one 15" long template. The average is about 300 per foot for the stars on wide belts, $\frac{1}{4}$ " and up.

So many times we read in various articles that the leather should not be too wet or too dry, but "just right". The "just right" doesn't last long with a fan blowing in the summer heat. All the more reason why the guides are a boon to belt stamping. You can merrily stamp along at many times the usual pace and with more accurate results. You cover more area before the leather dries. The template covers the belt and reduces moisture evaporation.

Stamping to a guide line with the "V" stamps takes extreme care so the tool points are exactly on the guideline. With the dot impressions, the tool points drop into place. Because V407 is angled so much it needs to be tilted at quite an angle to get even depth. (It's designed as a veiner). Hold V407 vertical and tap firmly to anchor it in the dots. Then gradually tilt it while tapping with the mallet to get even depth on the entire curve. The other vieners are easier to use.

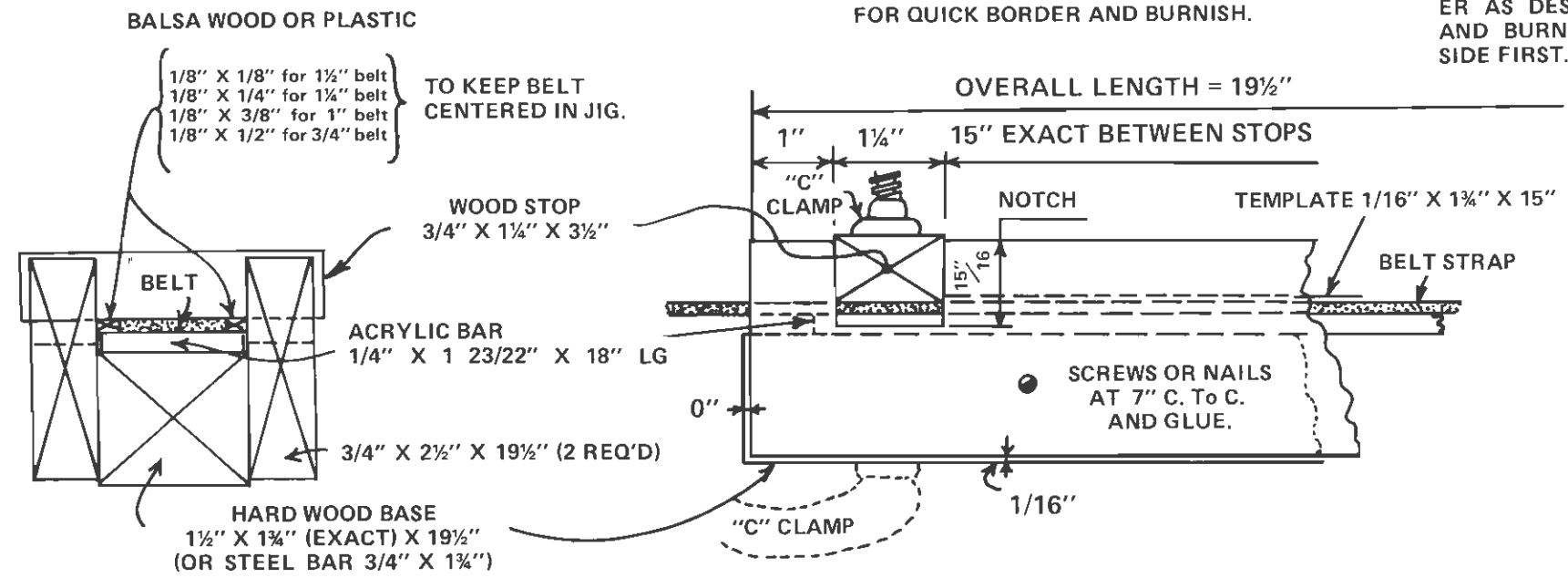
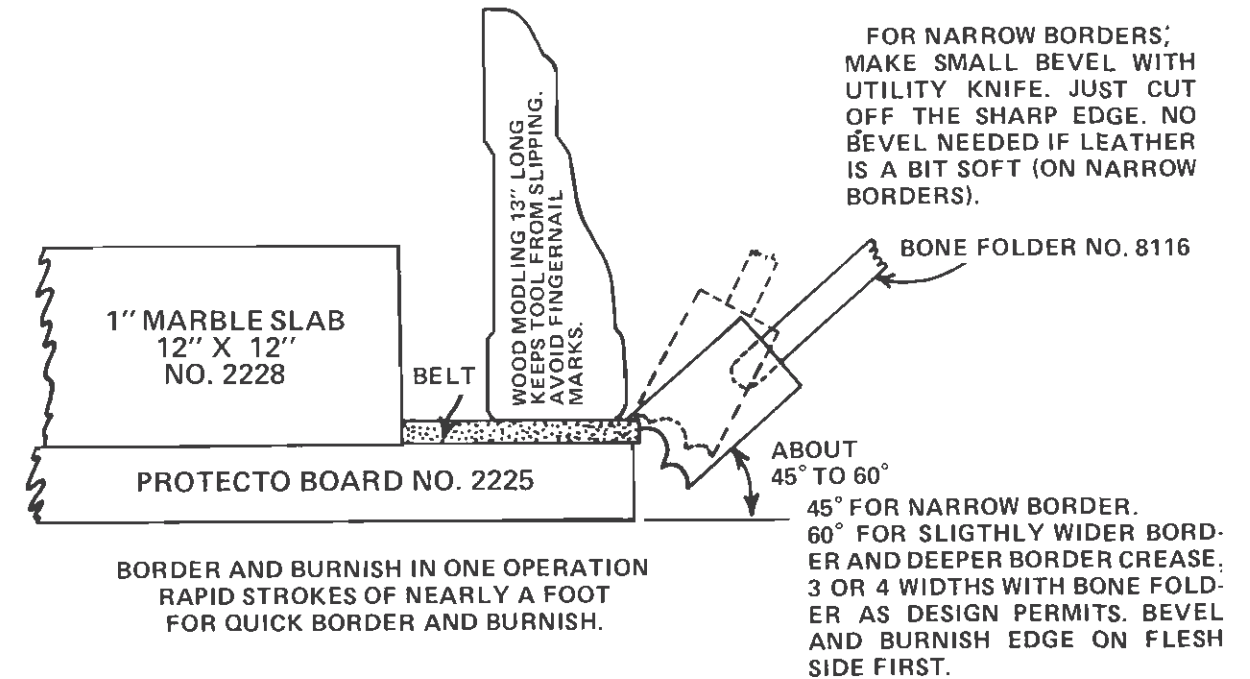
Some of the Crafftool stamps have rounded edges at the face of the tool. For these make a second layer of cardboard with slightly larger cutouts and glue it to the upper layer.

Sharply angled B701 kept bevels narrow. A fine tool!



Elmer E. Heft, 76, is a retired draftsman living in De Land, Florida. He started leather work in early 1983 making suede moccasins. He has made a set of templates for the tiniest infants to men's size 13, which can be used for any width. In 1984-1985 he donated 282 pairs of custom fitted moccasins to the Duvall Home for Retarded Children in Glenwood, Florida and the Methodist Children's Home in Enterprise. Hence, the nickname "Sandy Claws". Before starting the Al Stohlman Course in 1985 he began doodling belt designs and got this idea of templates and a holding jig, for quick and easy belt stamping. He also enjoys golf, bowling and listening to baseball.

SPECIAL TIPS
 A STRIPE OF ORANGE COVA DYE ON THE SHAFT OF CRAFTTOOL STAMPS B961, B962, F909 WILL AID IN KEEPING TOOL TURNED CORRECTLY ALSO, A 1/16" STRIPE ON BOTH "SIDES" OF S628.
 STORE LEATHER WELD (NO. 2015) UPSIDE DOWN TO AVOID CLOGGING.



SKETCH OF HOLDING JIG
 SCALE: HALF SIZE



Distributed by Tandy Leather Company
 Fort Worth, Texas 76133
 A Division of Tandy Crafts, Inc.

Precision Stamping of intricate geometrical patterns can be accomplished quickly and accurately without guide lines or measuring, even by the inexperienced beginner.

The use of stamping guides (templates) placed in a holding jig with $\frac{3}{4}$ " to $1\frac{3}{4}$ " wide belt strips makes belt stamping easy without the tedious measuring and stamping to guide lines. The stamps are automatically turned to the correct angle.

Deep dot impressions are pressed into the leather with the sharp point of a modeling tool or draftsman's dividers. The pointed edges of the "V" Craftool stamps, such as V400, V406, V407, V708, etc., are placed in the dot impressions to ensure accurate stamping with little chance of error.

Designs EH2 and EH38 are stamped directly from the template. No location dots required. Other designs like EH12 and all EH38 designs require very accurate stamping after removing belt from jig. Therefore, the use of jig and templates will not prevent the normal development of stamping skills.

Some of these designs would be a challenge to the best of expert stampers, like EH12, EH33X, and EH38. With the templates and jig, any leathercrafter can stamp near perfect designs. The rest of the designs on this page are also difficult.

The key to success with this method of stamping belts is the accuracy of the stamping guides. The guides used for these belt designs were carefully made. The cutouts and small holes were measured to die-maker's tolerances of .005". Pencil lines were not used. Scribing lines with a utility knife resulted in more accurate layout.

The cutouts were made with a utility knife to fit exactly the shape of the Craftool stamp. Accurate spacing was achieved with the use of a good quality architect's scale which has fine line graduations. The sharp point of the utility knife marked locations right on target. Hair lines were scribed on the cardboard template in both directions; at intersection of these lines the needle point of a draftsman's dividers stabs holes in the template to locate the dot impressions.

These small holes can be enlarged to use the sharp end of a modeling tool. These dots locate the points at outer edges of the "V" stamping tool face.

Fine drafting tools and skills are required to make these guides. Fifty years of drafting experience helped a lot.

Good quality cardboard from an artists supply shop was used for these guides. Plastic would be more durable but difficult to draw on and cut. There is a white plastic 2 mm thick which I used, but can't locate the source. A friend gave me some.

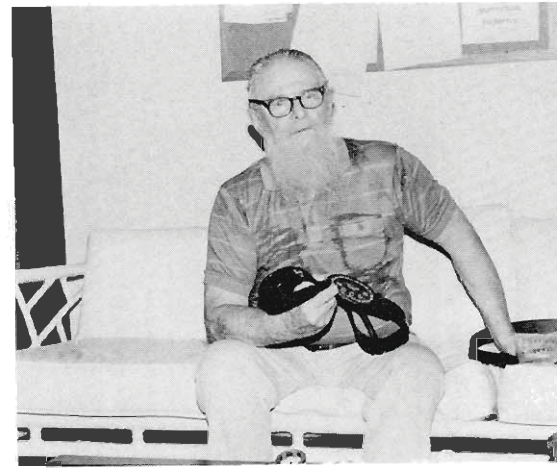
For the star designs there are up to 470 holes punched in one 15" long template. The average is about 300 per foot for the stars on wide belts, $\frac{1}{4}$ " and up.

So many times we read in various articles that the leather should not be too wet or too dry, but "just right". The "just right" doesn't last long with a fan blowing in the summer heat. All the more reason why the guides are a boon to belt stamping. You can merrily stamp along at many times the usual pace and with more accurate results. You cover more area before the leather dries. The template covers the belt and reduces moisture evaporation.

Stamping to a guide line with the "V" stamps takes extreme care so the tool points are exactly on the guideline. With the dot impressions, the tool points drop into place. Because V407 is angled so much it needs to be tilted at quite an angle to get even depth. (It's designed as a veiner). Hold V407 vertical and tap firmly to anchor it in the dots. Then gradually tilt it while tapping with the mallet to get even depth on the entire curve. The other vieners are easier to use.

Some of the Craftool stamps have rounded edges at the face of the tool. For these make a second layer of cardboard with slightly larger cutouts and glue it to the upper layer.

Sharply angled B701 kept bevels narrow. A fine tool!

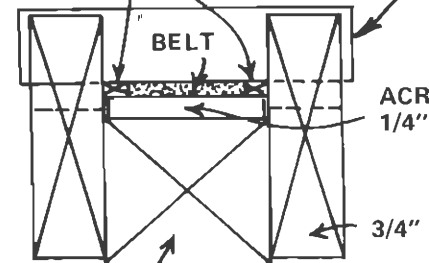


SPECIAL TIPS

A STRIPE OF ORANGE COVA DYE ON THE SHAFT OF CRAFTTOOLS B961, B962, F909 WILL AID IN KEEPING TOOL TURNED CORRECTLY. ALSO, A $\frac{1}{16}$ " STRIPE ON BOTH "SIDES" OF S628. STORE LEATHER WELD (NO. 2015) UPSIDE DOWN TO

BALSA WOOD OR PLASTIC

$\frac{1}{8}$ " X $\frac{1}{8}$ " for $\frac{1}{2}$ " belt
 $\frac{1}{8}$ " X $\frac{1}{4}$ " for $\frac{3}{4}$ " belt
 $\frac{1}{8}$ " X $\frac{3}{8}$ " for 1" belt
 $\frac{1}{8}$ " X $\frac{1}{2}$ " for $\frac{3}{4}$ " belt



HARD WOOD BLOCK
 $1\frac{1}{2}$ " X $1\frac{3}{4}$ " (EXACT)
 (OR STEEL BAR $\frac{3}{4}$ "

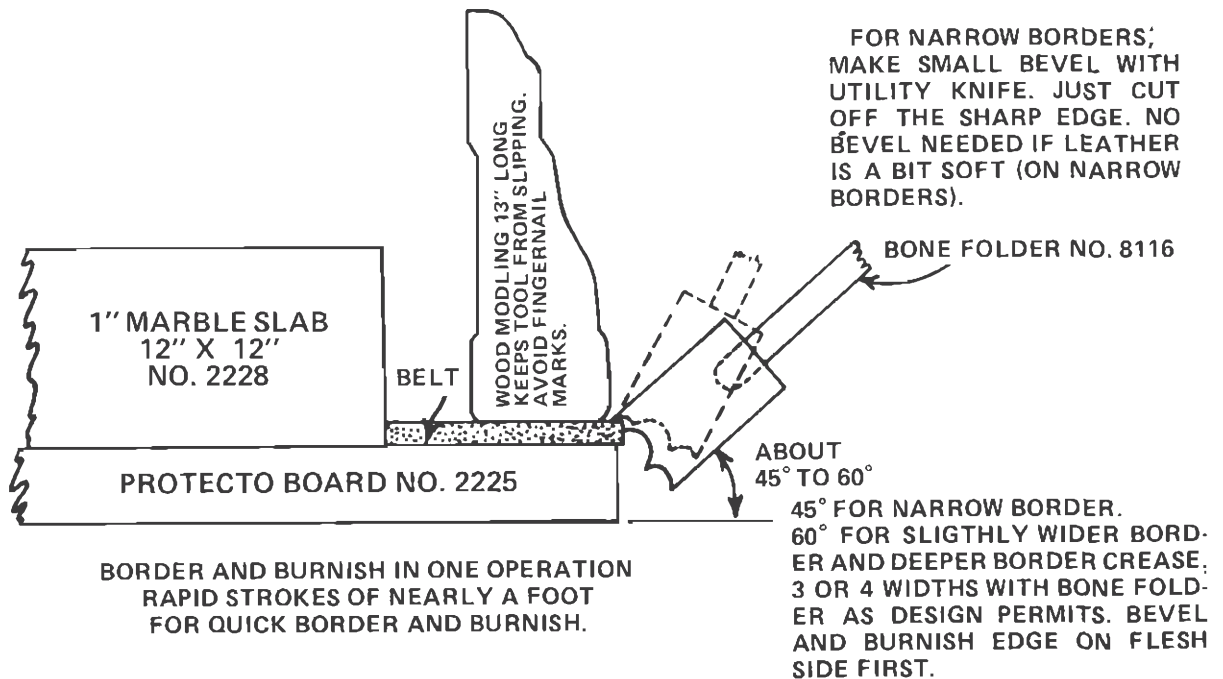


Distributed by Tandy Leather Company
 Fort Worth, Texas 76133
 A Division of Tandy Crafts, Inc.

Printed in U.S.A.

Elmer E. Heft, 76, is a retired draftsman living in De Land, Florida. He started leather work in early 1983 making suede moccasins. He has made a set of templates for the tiniest infants to men's size 13, which can be used for any width. In 1984-1985 he donated 282 pairs of custom fitted moccasins to the Duvall Home for Retarded Children in Glenwood, Florida and the Methodist Children's Home in Enterprise. Hence, the nickname "Sandy Claws". Before starting the Al Stohlman Course in 1985 he began doodling belt designs and got this idea of templates and a holding jig, for quick and easy belt stamping. He also enjoys golf, bowling and listening to baseball.

TOOL STAMPS
CORRECTLY
AVOID CLOGGING.



IC

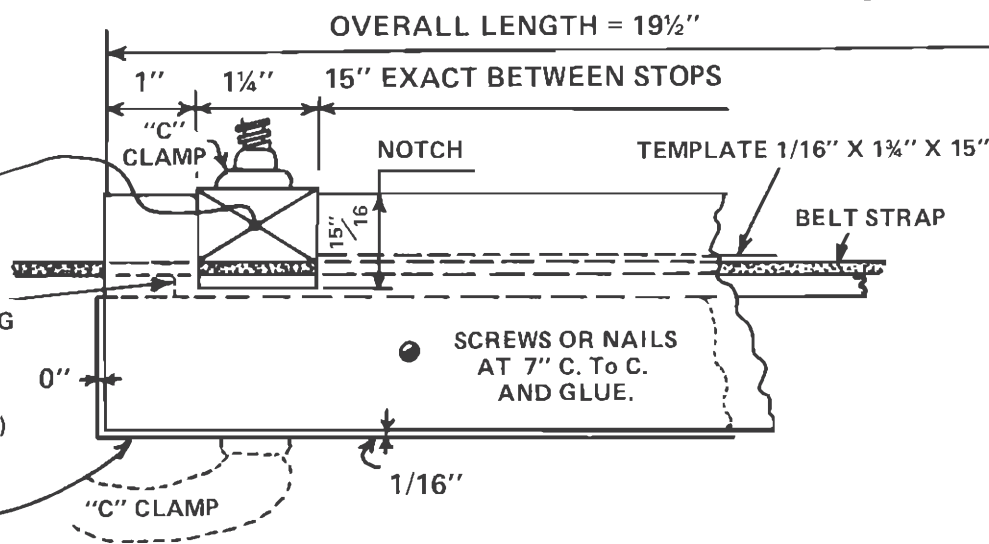
TO KEEP BELT
CENTERED IN JIG.

WOOD STOP
3/4" X 1 1/4" X 3 1/2"

ALYLIC BAR
X 1 23/22" X 18" LG

X 2 1/2" X 19 1/2" (2 REQ'D)

BASE
X 19 1/2"
" X 1 1/4"



SKETCH OF HOLDING JIG
SCALE: HALF SIZE