



## Doodle Page Digital Download

This PDF file contains 1 (one) Doodle Page. The PDF has been put together to give you options when it comes to printing. Pages and patterns that are larger than 8½x11 have been provided in two formats:



### 1) Full Size

If you would like to have a full size print out, take the full size pages to your local print shop and they can print it for you. All full size Doodle Pages are 11x17



### 2) Tiled

The tiled pages give you the option of printing the full sized Doodle Pages at home. You print the tiled pages and then assemble them to make the larger patterns.

The Doodle Page PDF files are typically laid out like this:

Front – full sized, front – tiled, back – full sized, back – tiled

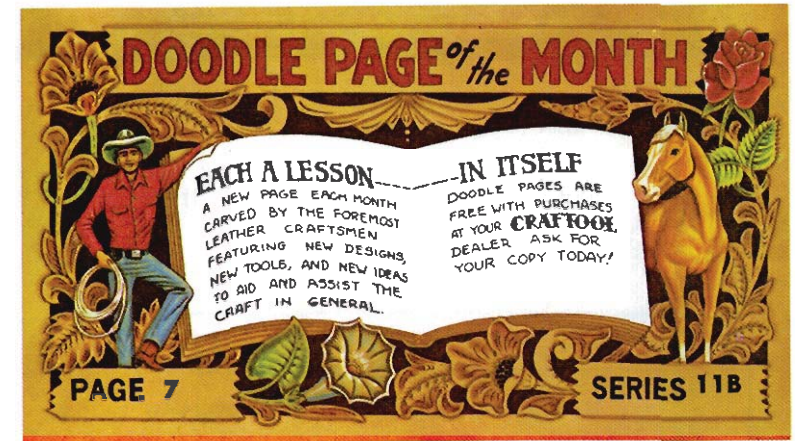
(Some Doodle Pages do not have backs)

Please note: When printing on a home printer, the edges may get cut off. To avoid this, make sure “Page Scaling” is set to “Shrink to Printable Area” in the Adobe Reader print dialogue box. This will decrease the size of the Doodle Page a very small amount.



You may take this PDF file to your local print shop to have the full-size pages printed for your own personal use.





## "Mother Nature's Wildlife" by Gene Noland

No. 3. The third picture in this series shows an odd bird. He's called the Kingfisher. His appearance is somewhat grotesque with a head too big for his body, a crest of "uncombed hair", and small weak feet. But he is quite a fisherman. He dives deep into the water catching the fish in his sharp bill and then either swallows it then or beats the bigger ones on logs or stones to make them eatable. This to me is another fascinating bird.

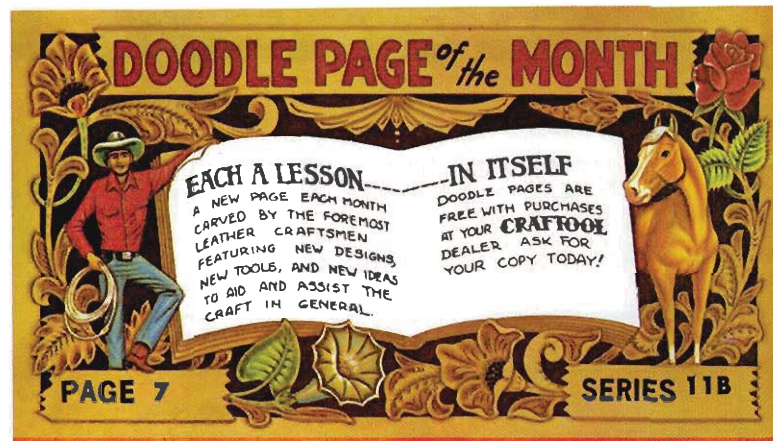
First in this picture there is a great amount of water so to make it look more smooth and glassy I used all smooth bevelers. I tried to give this pond or lake a choppy look as if the wind is blowing. This I did by using the large tool No. F897 hitting and skipping at random but always in a horizontal line. The ripple rings around the fallen log are done by first beveling











## *"Mother Nature's Wildlife"* by Gene Noland

No. 3. The third picture in this series shows an odd bird. He's called the Kingfisher. His appearance is somewhat grotesque with a head too big for his body, a crest of "uncombed hair", and small weak feet. But he is quite a fisherman. He dives deep into the water catching the fish in his sharp bill and then either swallows it then or beats the bigger ones on logs or stones to make them eatable. This to me is another fascinating bird.

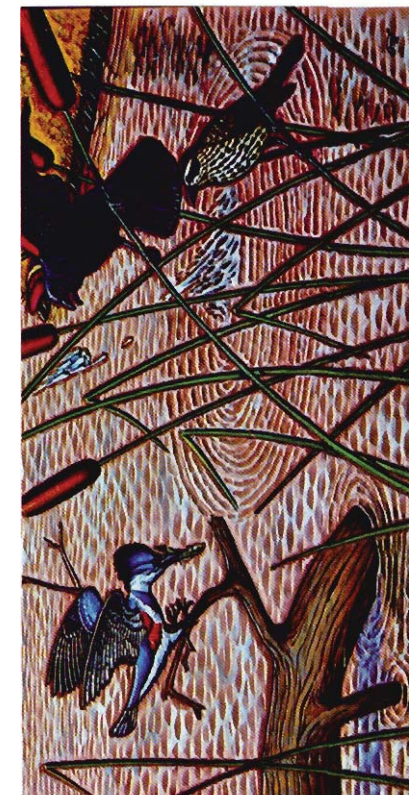
First in this picture there is a great amount of water so to make it look more smooth and glassy I used all smooth bevelers. I tried to give this pond or lake a choppy look as if the wind is blowing. This I did by using the large tool No. F897 hitting and skipping at random but always in a horizontal line. The ripple rings around the fallen log are done by first beveling







The photo shows how this month's page and first month's page can be joined to form a vertical scene. This would make an ideal scene for office, home or den... for the fishing or sporting enthusiast or outdoor man. Dye the picture in tones of brown, or color if desired.



and then going in between the beveled rings with a pear shader tool No. P206.

After completing the beveling of the cat-tail, I went over the head of it with the large matting tool No. F900. This I felt would give it a more realistic appearance.

In carving the Kingfisher I beveled it first then went over the entire body with tool No. V409. That is with the exception of the large wing and tail feathers. On these I used the beveling tools No. F202L and No. F202R. Around the head and lower body I used tool No. F902 with an almost over lapping method. For additional feather effect on the top and under side of the wings I used tools No. U851 and No. U853.

I feel the hardest part in doing a big leather picture like these doodle pages is in coloring them. This can be done by many methods but I would suggest to anyone learning color to obtain a copy of Al Stohlman's book "How To Color Leather". I feel quite sure that it will save many a headache to those who are just starting color. Good luck with this project as I am sure you will enjoy the results.

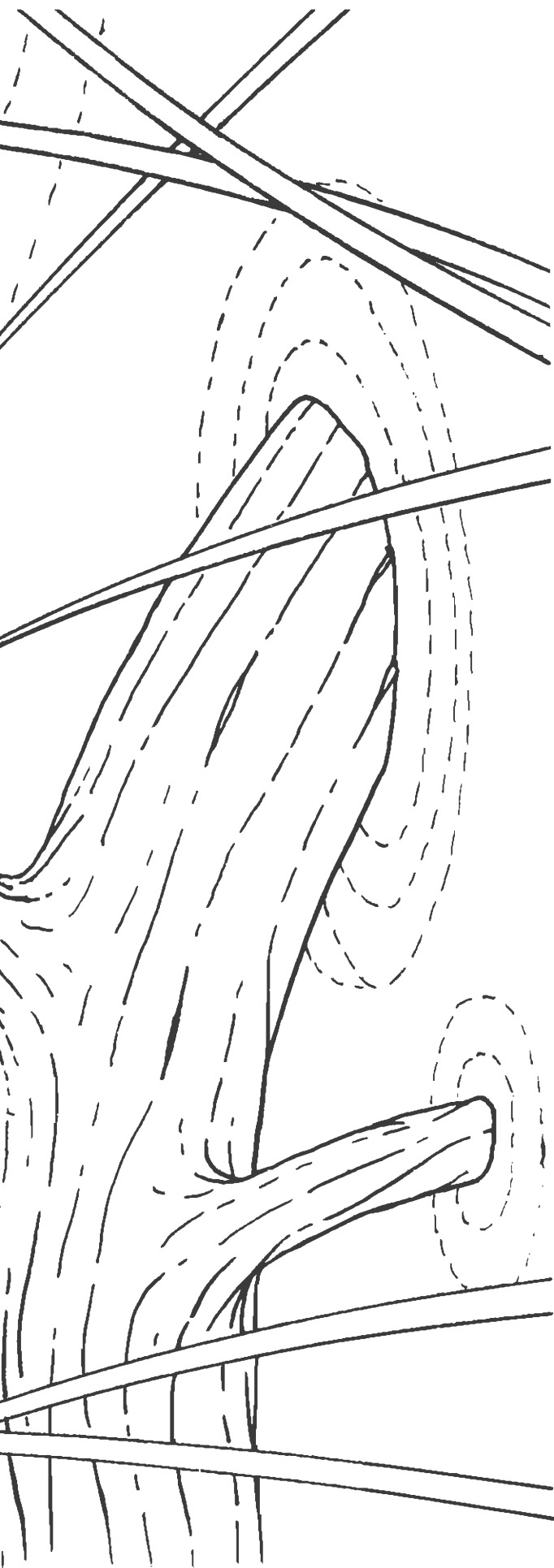
#### "HOW TO COLOR LEATHER"

A full color book that explains in complete detail  
how to do intricate coloring on leather  
Available at your CRAFTOOL DEALER

#### TOOLS USED:

B202L, B202R, B701, B702, B705, B936, F890, F891, F895, F897, F900, F902, F941, P206, S632, S932, U851, V409





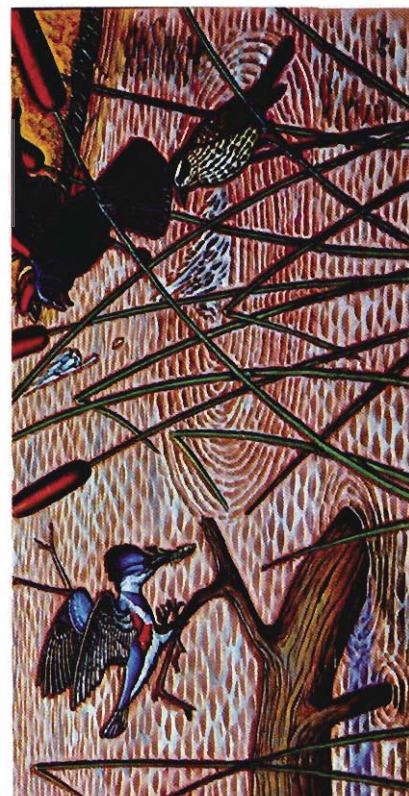
The photo shows how this month's page and first month's page can be joined to form a vertical scene. This would make an ideal scene for office, home or den . . . for the fishing or sporting enthusiast or outdoor man. Dye the picture in tones of brown, or color if desired.

and then going in between the beveled rings with a pear shader tool No. P206.

After completing the beveling of the cattail, I went over the head of it with the large matting tool No. F900. This I felt would give it a more realistic appearance.

In carving the Kingfisher I beveled it first then went over the entire body with tool No. V409. That is with the exception of the large wing and tail feathers. On these I used the beveling tools No. F202L and No. F202R. Around the head and lower body I used tool No. F902 with an almost over lapping method. For additional feather effect on the top and under side of the wings I used tools No. U851 and No. U853.

I feel the hardest part in doing a big leather picture like these doodle pages is in coloring them. This can be done by many methods but I would suggest to anyone learning color to obtain a copy of Al Stohlman's book "How To Color Leather". I feel quite sure that it will save many a headache to those who are just starting color. Good luck with this project as I am sure you will enjoy the results.



#### **"HOW TO COLOR LEATHER"**

**A full color book that explains in complete detail  
how to do intricate coloring on leather  
Available at your CRAFTOOL DEALER**

#### **TOOLS USED:**

**B202L, B202R, B701, B702, B705, B936, F890, F891,  
F895, F897, F900, F902, F941, P206, S632, S932,  
U851, V409**