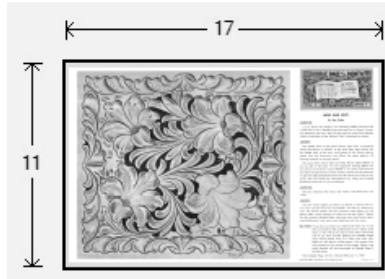




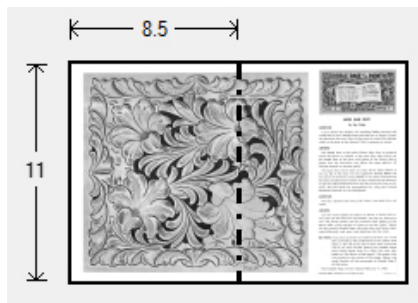
## Doodle Page Digital Download

This PDF file contains 1 (one) Doodle Page. The PDF has been put together to give you options when it comes to printing. Pages and patterns that are larger than 8½x11 have been provided in two formats:



### 1) Full Size

If you would like to have a full size print out, take the full size pages to your local print shop and they can print it for you. All full size Doodle Pages are 11x17



### 2) Tiled

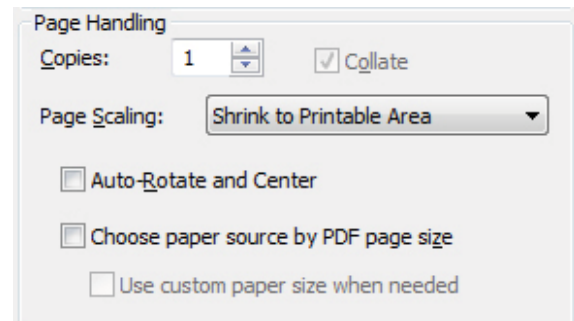
The tiled pages give you the option of printing the full sized Doodle Pages at home. You print the tiled pages and then assemble them to make the larger patterns.

The Doodle Page PDF files are typically laid out like this:

Front – full sized, front – tiled, back – full sized, back – tiled

(Some Doodle Pages do not have backs)

Please note: When printing on a home printer, the edges may get cut off. To avoid this, make sure “Page Scaling” is set to “Shrink to Printable Area” in the Adobe Reader print dialogue box. This will decrease the size of the Doodle Page a very small amount.



You may take this PDF file to your local print shop to have the full-size pages printed for your own personal use.



**DOODLE PAGE** *of the* **MONTH**

**EACH A LESSON**  
 A NEW PAGE EACH MONTH  
 CARVED BY THE FOREMOST  
 LEATHER CRAFTSMEN  
 FEATURING NEW DESIGNS,  
 NEW TOOLS, AND NEW IDEAS  
 TO AID AND ASSIST THE  
 CRAFT IN GENERAL.

**IN ITSELF**  
 DOODLE PAGES ARE  
 FREE WITH PURCHASES  
 AT YOUR **CRAFTOOL**  
 DEALER. ASK FOR  
 YOUR COPY TODAY!

**PAGE 5** **SERIES 4D**

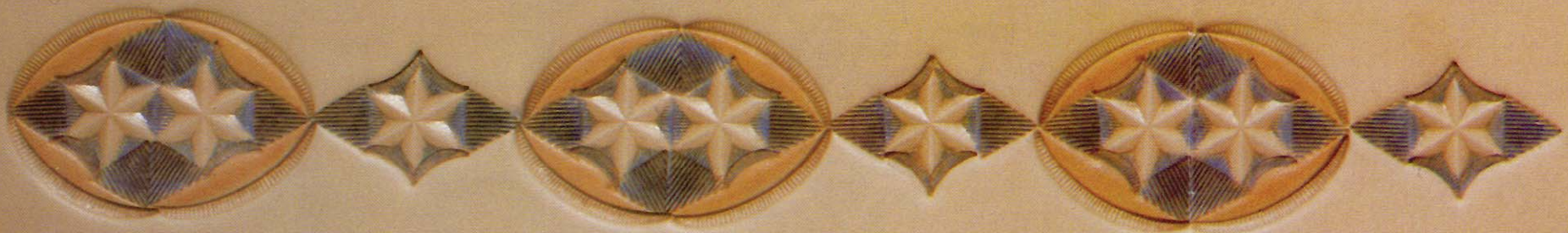
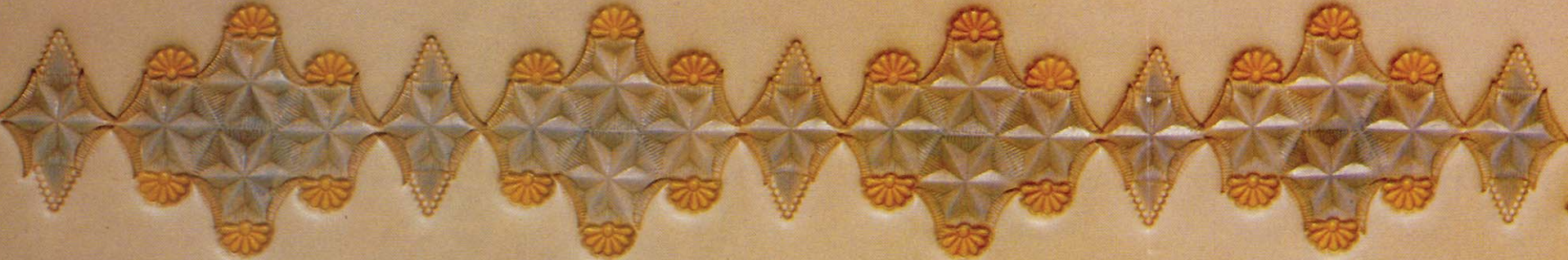
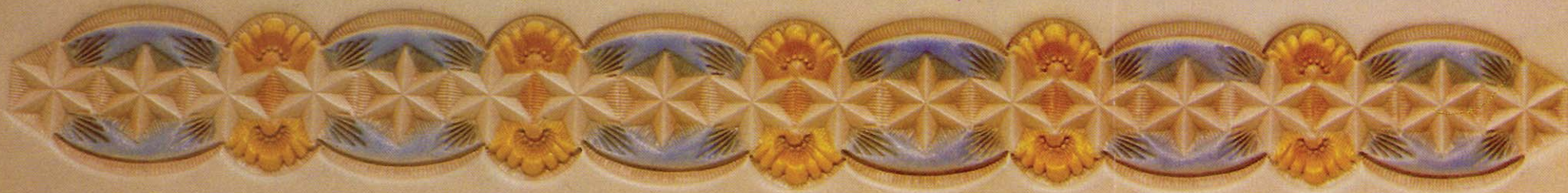
**MORE DESIGN IDEAS FROM  
 Jerry Jennings**

Featured this month are some more new Craftool stamping tools: B962, G527, G602, G645, V424, T448, Z250 and Z260. I have used them on 8 belt patterns (for 1½", 1¾", and 2" belts), several medallions and a simple floral.

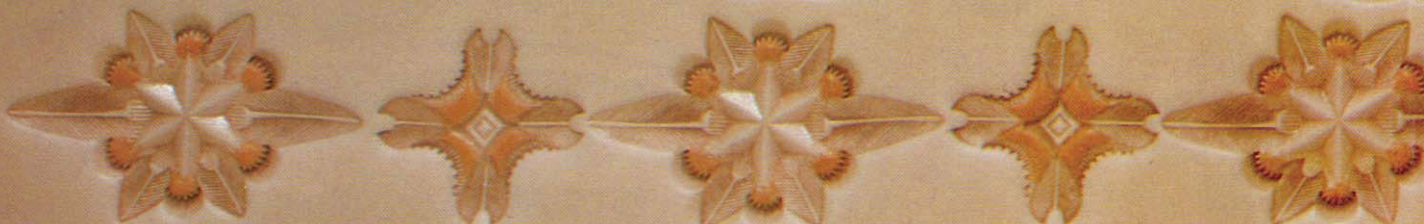
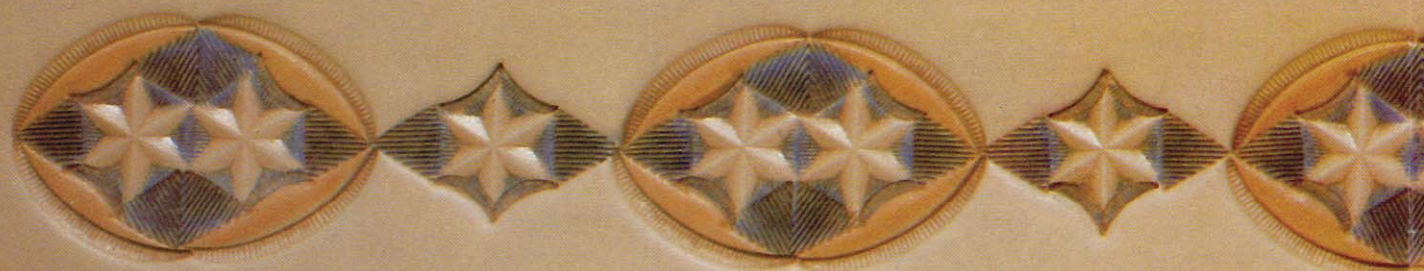
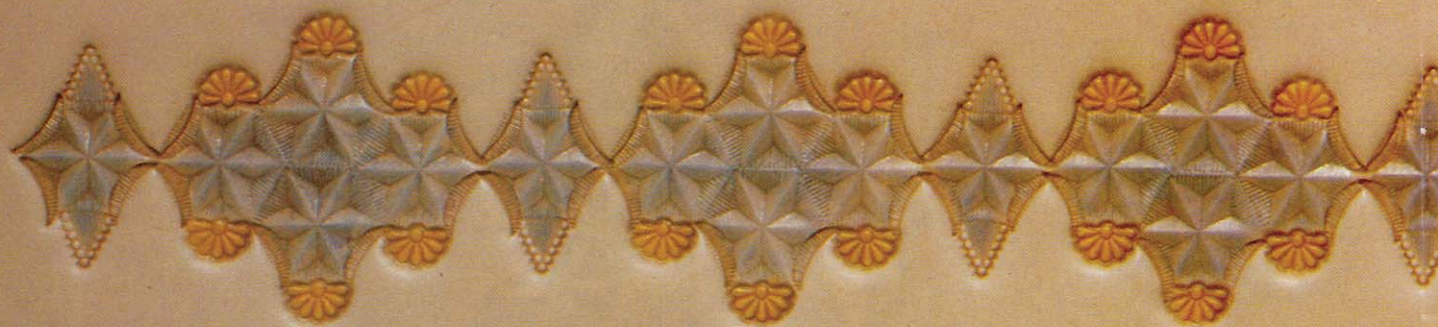
The leaves and flower of the floral design are stamped with T448 to show some of the many uses of this versatile tool.

On the back are the step-by-step directions for stamping the designs. They may be used for belts or they can be expanded for larger projects.

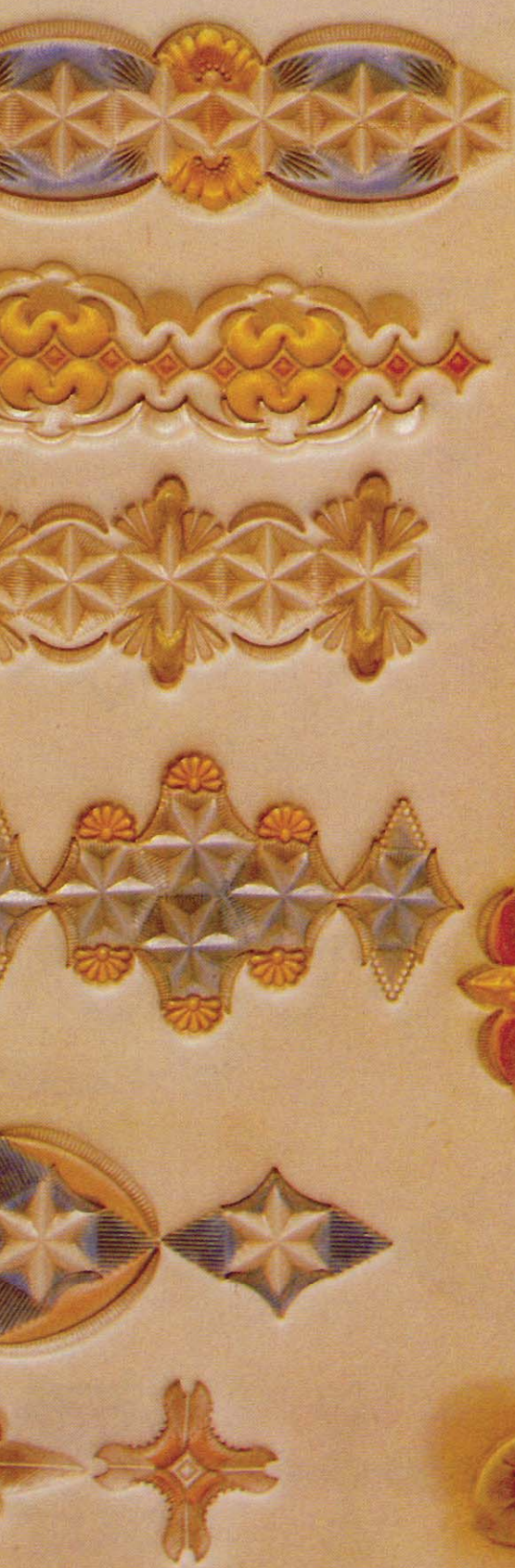
The dyes used have all been reduced for a subdued effect. I used Tandy Leather Company's Super Dye and reducer on these designs. Experiment to obtain the intensity you desire.











**DOODLE PAGE** *of the* **MONTH**

**EACH A LESSON**  
A NEW PAGE EACH MONTH  
CARVED BY THE FOREMOST  
LEATHER CRAFTSMEN  
FEATURING NEW DESIGNS,  
NEW TOOLS, AND NEW IDEAS  
TO AID AND ASSIST THE  
CRAFT IN GENERAL.

**IN ITSELF**  
DOODLE PAGES ARE  
FREE WITH PURCHASES  
AT YOUR **CRAFTOOL**  
DEALER. ASK FOR  
YOUR COPY TODAY!

**PAGE 5** **SERIES 4D**

**MORE DESIGN IDEAS FROM  
Jerry Jennings**

Featured this month are some more new Craftool stamping tools: B962, G527, G602, G645, V424, T448, Z250 and Z260. I have used them on 8 belt patterns (for 1½", 1¾", and 2" belts), several medallions and a simple floral.

The leaves and flower of the floral design are stamped with T448 to show some of the many uses of this versatile tool.

On the back are the step-by-step directions for stamping the designs. They may be used for belts or they can be expanded for larger projects.

The dyes used have all been reduced for a subdued effect. I used Tandy Leather Company's Super Dye and reducer on these designs. Experiment to obtain the intensity you desire.





