



## Doodle Page Digital Download

This PDF file contains 1 (one) Doodle Page. The PDF has been put together to give you options when it comes to printing. Pages and patterns that are larger than 8½x11 have been provided in two formats:



### 1) Full Size

If you would like to have a full size print out, take the full size pages to your local print shop and they can print it for you. All full size Doodle Pages are 11x17



### 2) Tiled

The tiled pages give you the option of printing the full sized Doodle Pages at home. You print the tiled pages and then assemble them to make the larger patterns.

The Doodle Page PDF files are typically laid out like this:

Front – full sized, front – tiled, back – full sized, back – tiled

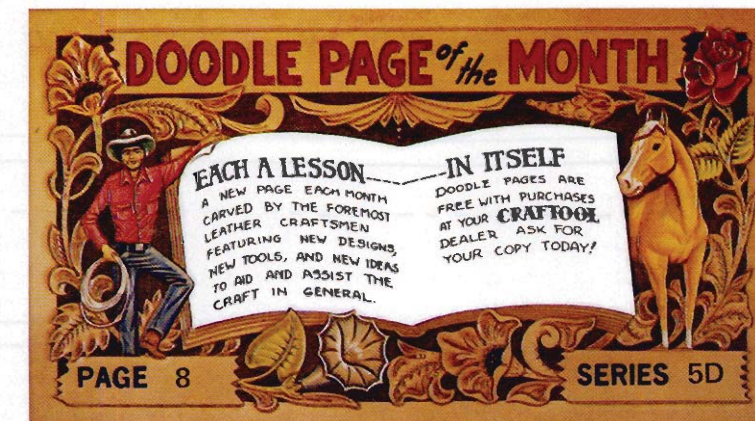
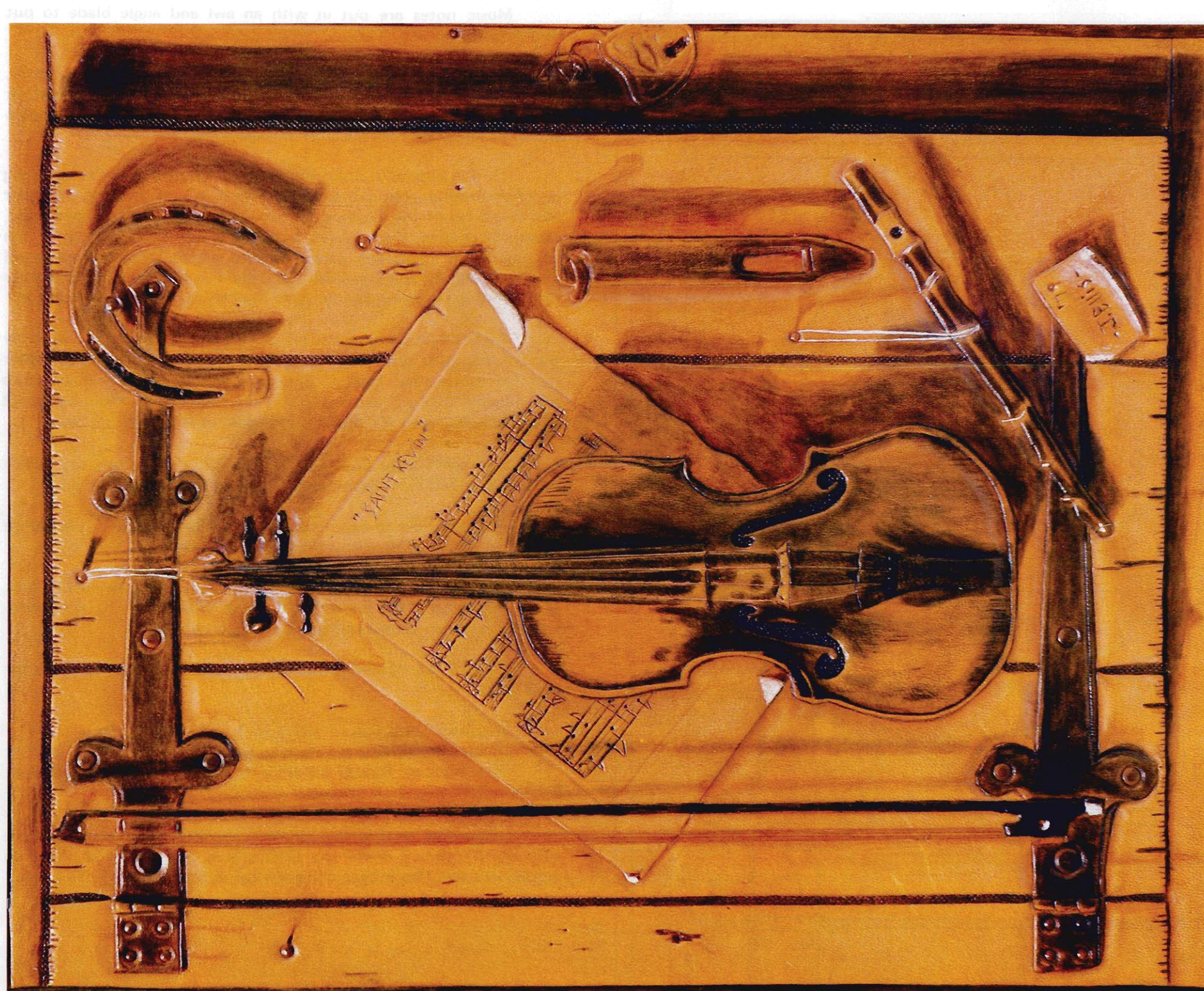
(Some Doodle Pages do not have backs)

Please note: When printing on a home printer, the edges may get cut off. To avoid this, make sure “Page Scaling” is set to “Shrink to Printable Area” in the Adobe Reader print dialogue box. This will decrease the size of the Doodle Page a very small amount.



You may take this PDF file to your local print shop to have the full-size pages printed for your own personal use.





### LEATHER SCULPTURE by June Ellis

"Music and Luck" is a break from the traditional leather carvings of wildlife or western scenes. When you have completed "Music and Luck" you will not only have a fine carved picture, but one that will resemble an oil painting. I enjoy educating the public on how much more of a challenge it is to dye leather pictures than to paint with oils on canvas.

As you know, it is easy to wipe a canvas clean and start over if one makes a mistake, but with leather and leather dyes this cannot be done because once you have touched the dye to the leather, it is there to stay. "Music and Luck" is a good lesson in the use of dyes and patience.

Take your time and you will be rewarded with a piece of leather that will be a true work of art. Good Luck!

Trace all lines in, but trace the broken lines in very lightly because most of them are guide lines for shading, the rest are for your modeling spoon. STUDY THE PICTURE.

Cut and bevel all solid lines using F896, F895, F891 and F890. Use A104 and A105 to matt down in between cupboard door slats and around outside of door.

A100 is used on the face of the violin in the tone holes that are shaped like backward S's and also in the air hole in the mouth piece of the flute and holes in the cupboard door. The hair blade 8021M is used to put hairing on violin bow.

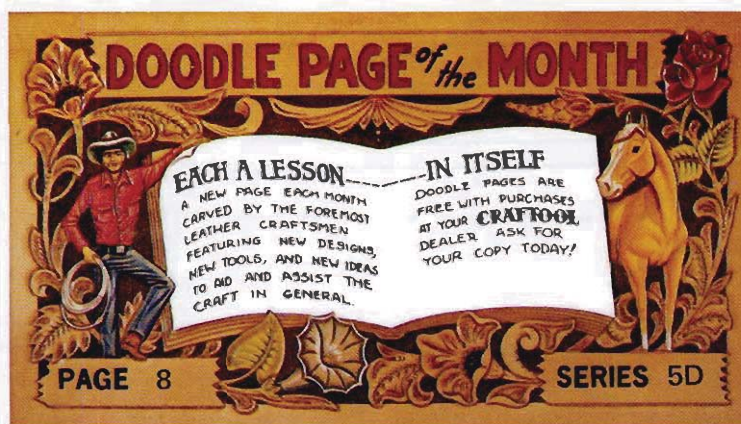
Use your smallest figure bevelers (F890 and F891) to bevel around the string tighteners on the neck of the violin and on horseshoe, etc. S864 and S632 are used for bolts on door hinges, H908 is used for key hole in padlock and S631 is used for nail heads on cupboard door.

After all beveling is done, use your modeling spoon where indicated and on music score to turn parts of the page up.









## LEATHER SCULPTURE

by  
June Ellis

"Music and Luck" is a break from the traditional leather carvings of wildlife or western scenes. When you have completed "Music and Luck" you will not only have a fine carved picture, but one that will resemble an oil painting. I enjoy educating the public on how much more of a challenge it is to dye leather pictures than to paint with oils on canvas.

As you know, it is easy to wipe a canvas clean and start over if one makes a mistake, but with leather and leather dyes this cannot be done because once you have touched the dye to the leather, it is there to stay. "Music and Luck" is a good lesson in the use of dyes and patience.

Take your time and you will be rewarded with a piece of leather that will be a true work of art. Good Luck!

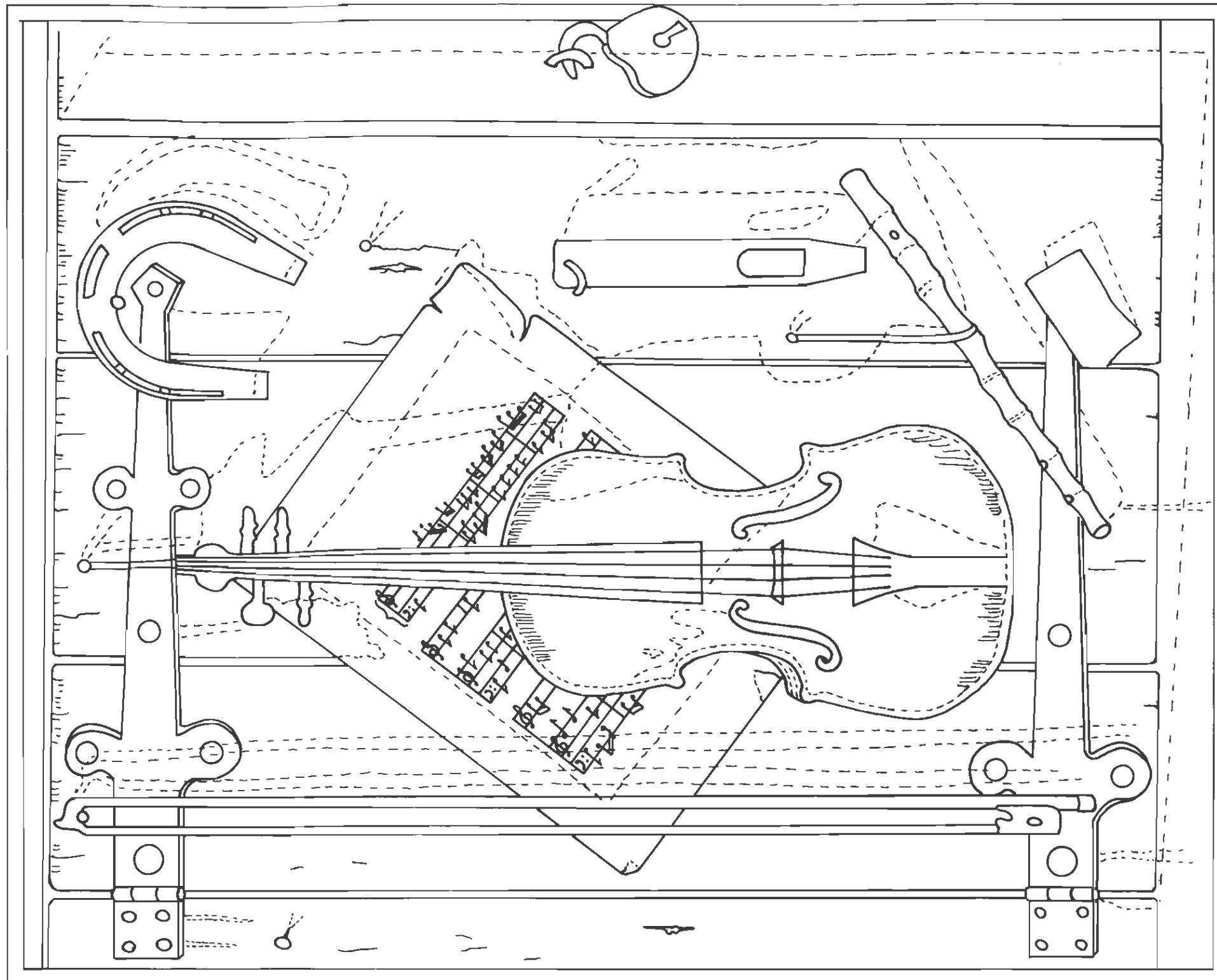
Trace all lines in, but trace the broken lines in very lightly because most of them are guide lines for shading, the rest are for your modeling spoon. STUDY THE PICTURE.

Cut and bevel all solid lines using F896, F895, F891 and F890. Use A104 and A105 to matt down in between cupboard door slats and around outside of door.

A100 is used on the face of the violin in the tone holes that are shaped like backward S's and also in the air hole in the mouth piece of the flute and holes in the cupboard door. The hair blade 8021M is used to put hairing on violin bow.

Use your smallest figure bevelers (F890 and F891) to bevel around the string tighteners on the neck of the violin and on horseshoe, etc. S864 and S632 are used for bolts on door hinges, H908 is used for key hole in padlock and S631 is used for nail heads on cupboard door.

After all beveling is done, use your modeling spoon where indicated and on music score to turn parts of the page up.



Very carefully use a straight edge and your angle blade to cut the staff lines on the music score and also use the angle blade to cut the title of the music. Use the same process to cut strings on violin.

Music notes are put in with an awl and angle blade to put stems on notes.

Spirit dyes were used on everything except music score, business card and around air hole of flute. Cova white was used on violin strings, strings holding violin and flute up and for high lights as well as upturned torn parts of musical score.

To dye cupboard door, block dye without the block. Use a rag wrapped around your index finger. Wipe it first on a brown paper bag to get rid of the excess dye, you will have better control dyeing, especially around the musical score. Use tan reduced 50% on the cupboard door. You can use cova white reduced on music score and business card, or you can leave these plain so that the natural leather shows through by using Tandy Super Shene and Dark Brown Antique.

After the Super Shene dries, buff it with a soft cloth and apply the antique with one finger so as not to get any antique on other parts of the leather. Rub antique into all cut parts on music score and quickly wipe off excess when the antique dries. Put a light coat of Super Shene over the music score again to seal in the antique.

Use spirit dyes for flute and violin, using the dry brush technique found in Al Stohlman's "How to Color Leather" book.

You will have to experiment with the brown spirit dyes before dyeing violin and flute. Use a piece of scrap leather.

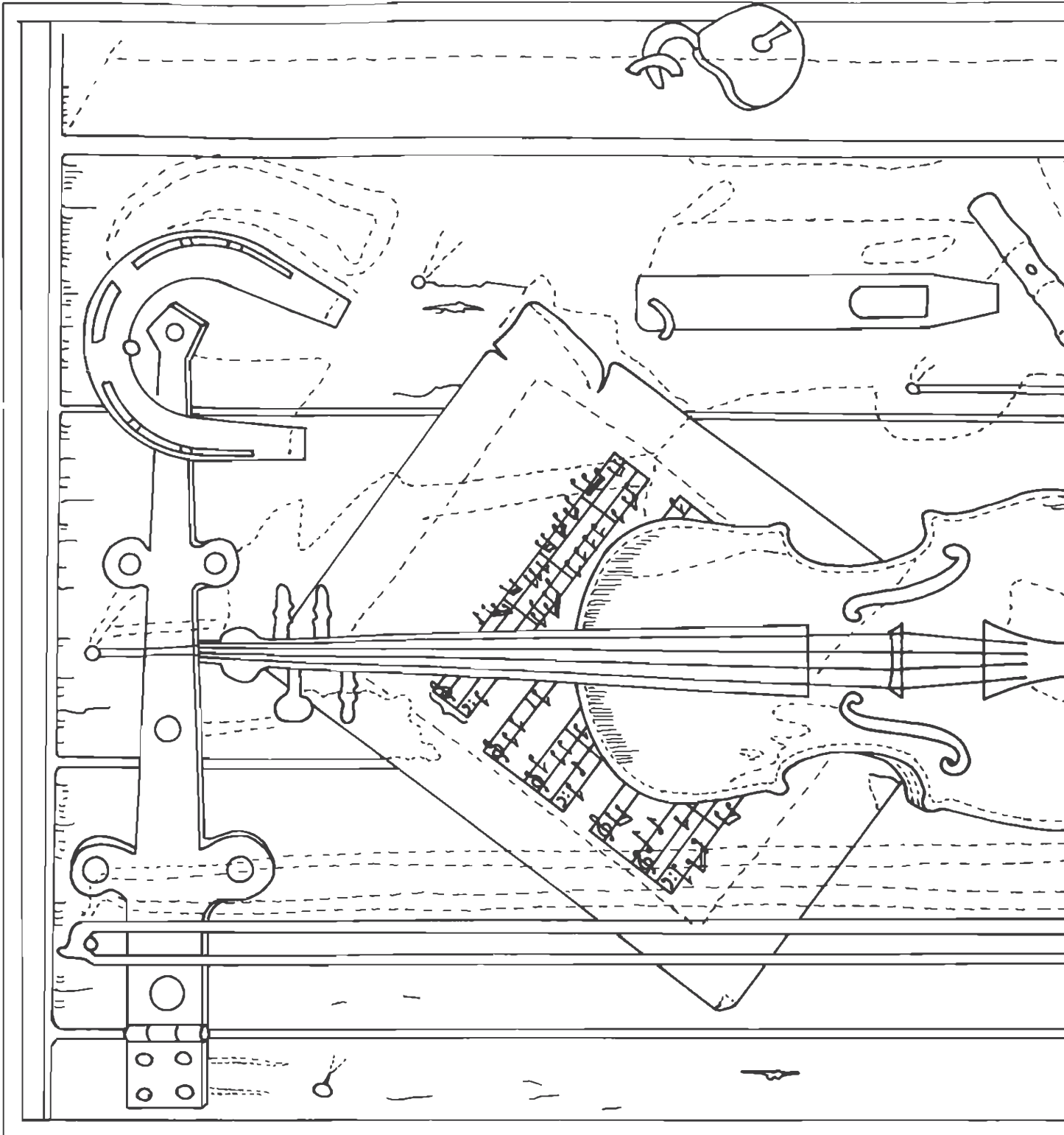
The darkest spots on violin were made by mixing a little black spirit dye with dark brown spirit dye. Remember to start with lightest shades of brown and darken as you go along.

Leave a bit of natural leather to show through on flute for high light.

Use black spirit dye on violin neck and string tighteners.

The shadows around outer parts of cupboard door are dark brown spirit dye put on in coats.

When one coat is dry put on another, etc. until you have reached the desired shade. Use light brown reduced for shadows on cupboard door. Use the same browns for door hinges and nail heads.





Very carefully use a straight edge and your angle blade to cut the staff lines on the music score and also use the angle blade to cut the title of the music. Use the same process to cut strings on violin.

Music notes are put in with an awl and angle blade to put stems on notes.

Spirit dyes were used on everything except music score, business card and around air hole of flute. Cova white was used on violin strings, strings holding violin and flute up and for high lights as well as upturned torn parts of musical score.

To dye cupboard door, block dye without the block. Use a rag wrapped around your index finger. Wipe it first on a brown paper bag to get rid of the excess dye, you will have better control dyeing, especially around the musical score. Use tan reduced 50% on the cupboard door. You can use cova white reduced on music score and business card, or you can leave these plain so that the natural leather shows through by using Tandy Super Shene and Dark Brown Antique.

After the Super Shene dries, buff it with a soft cloth and apply the antique with one finger so as not to get any antique on other parts of the leather. Rub antique into all cut parts on music score and quickly wipe off excess when the antique dries. Put a light coat of Super Shene over the music score again to seal in the antique.

Use spirit dyes for flute and violin, using the dry brush technique found in Al Stohlman's "How to Color Leather" book.

You will have to experiment with the brown spirit dyes before dyeing violin and flute. Use a piece of scrap leather.

The darkest spots on violin were made by mixing a little black spirit dye with dark brown spirit dye. Remember to start with lightest shades of brown and darken as you go along.

Leave a bit of natural leather to show through on flute for high light.

Use black spirit dye on violin neck and string tighteners.

The shadows around outer parts of cupboard door are dark brown spirit dye put on in coats.

When one coat is dry put on another, etc. until you have reached the desired shade. Use light brown reduced for shadows on cupboard door. Use the same browns for door hinges and nail heads.

