



## Doodle Page Digital Download

This PDF file contains 1 (one) Doodle Page. The PDF has been put together to give you options when it comes to printing. Pages and patterns that are larger than 8½x11 have been provided in two formats:



### 1) Full Size

If you would like to have a full size print out, take the full size pages to your local print shop and they can print it for you. All full size Doodle Pages are 11x17



### 2) Tiled

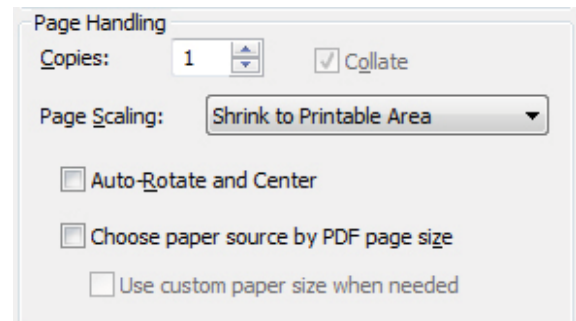
The tiled pages give you the option of printing the full sized Doodle Pages at home. You print the tiled pages and then assemble them to make the larger patterns.

The Doodle Page PDF files are typically laid out like this:

Front – full sized, front – tiled, back – full sized, back – tiled

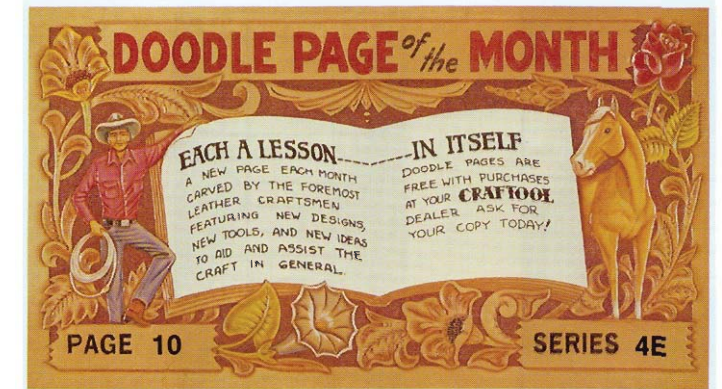
(Some Doodle Pages do not have backs)

Please note: When printing on a home printer, the edges may get cut off. To avoid this, make sure “Page Scaling” is set to “Shrink to Printable Area” in the Adobe Reader print dialogue box. This will decrease the size of the Doodle Page a very small amount.



You may take this PDF file to your local print shop to have the full-size pages printed for your own personal use.





## LACED BELTS

By Harry Resinger

A variety of laced belts have been popular, over the years, and here is a new approach that is being offered in the more expensive shops, at very high retail prices. Whether for a lady or gentleman, the color combinations, widths, and patterns can be designed for any outfit, and for both casual or dress wear. These patterns show color contrasts, between the leather and lace, but a belt can be very attractive if you use the same color lace and leather, and rely on the different textures to enhance the design. This approach would be especially effective for, a dress belt.

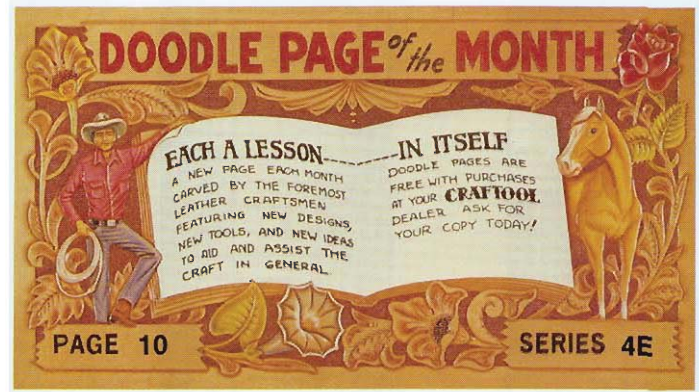
This DOODLE PAGE shows the patterns for six different  $1\frac{1}{4}$ " designs, and also gives you a graph that will allow you to design your own patterns. I suggest that you use a copy machine to reproduce extra copies of the graph so that you will be able to experiment with your own design ideas. The graph shows a center reference line, and you should establish a border line that will work with your design, but be sure to stay at least  $\frac{1}{8}$ " from the edge, and  $\frac{3}{16}$ ", or more, if possible, depending on the design.

Once you have decided on the pattern you want to use, transfer the pattern to the graph, making sure the lacing holes fall on the lines on the graph. Align the graph on the belt strip, and mark the holes with a scratch awl. DO NOT EXTEND THE LACED DESIGN INTO THE BILLET AREAS, WHERE THE BUCKLE CAN WEAR ON THE LACE. Start the lace about 8 inches from









## LACED BELTS

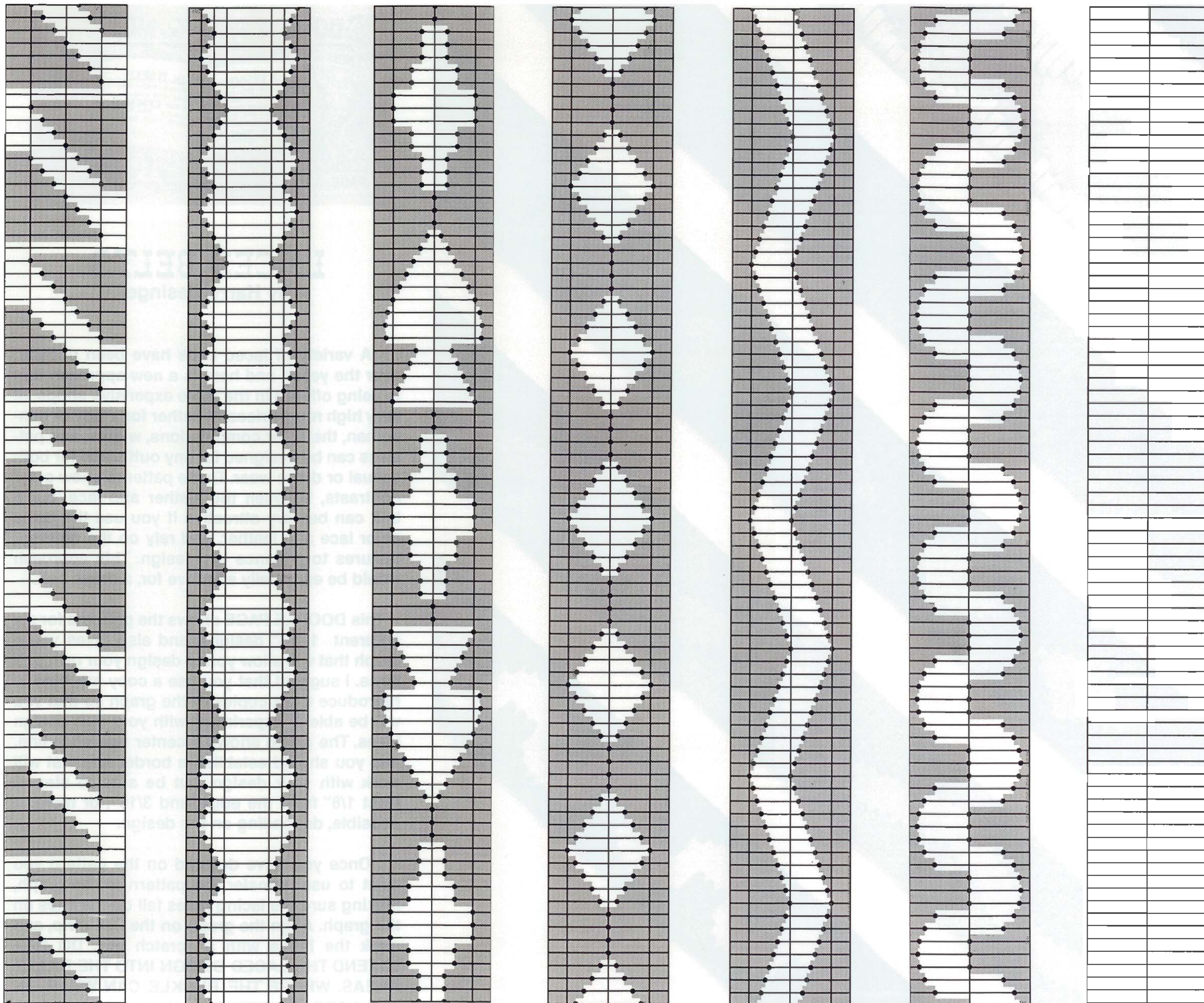
By Harry Resinger

A variety of laced belts have been popular, over the years, and here is a new approach that is being offered in the more expensive shops, at very high retail prices. Whether for a lady or gentleman, the color combinations, widths, and patterns can be designed for any outfit, and for both casual or dress wear. These patterns show color contrasts, between the leather and lace, but a belt can be very attractive if you use the same color lace and leather, and rely on the different textures to enhance the design. This approach would be especially effective for, a dress belt.

This DOODLE PAGE shows the patterns for six different 1 1/4" designs, and also gives you a graph that will allow you to design your own patterns. I suggest that you use a copy machine to reproduce extra copies of the graph so that you will be able to experiment with your own design ideas. The graph shows a center reference line, and you should establish a border line that will work with your design, but be sure to stay at least 1/8" from the edge, and 3/16", or more, if possible, depending on the design.

Once you have decided on the pattern you want to use, transfer the pattern to the graph, making sure the lacing holes fall on the lines on the graph. Align the graph on the belt strip, and mark the holes with a scratch awl. DO NOT EXTEND THE LACED DESIGN INTO THE BILLET AREAS, WHERE THE BUCKLE CAN WEAR ON THE LACE. Start the lace about 8 inches from





the end of the billet, or at a point where the buckle will not rub on the lace. If all these holes confuse you, and they certainly can, color or pencil in the lace, on the graph, and use it as a reference guide while you are lacing the belt. From my own experience, this provides a good “road map” as you lace.

The lacing holes are spaced 1/8” apart, and I have used 1/8” lace to do the simple whip stitch that forms the pattern. Use a size No. 0 (5/64”) punch in a rotary or plier punch, rather than using a drive punch that might open the hole too much if driven too deep. Be sure to center the punch tube over the reference mark, so that the lacing will be as even as possible. If you want to make a wider, or narrower belt, make your own graph, making sure that you space the lines 1/8” apart.

Use a No. 8076, size 2, Bevel Eze Edge Beveler to bevel the edge of the belt, so that the lace will lay smoothly over the edge. Punch all holes before dyeing and finishing the belt, and do all dyeing and finishing before lacing.

These designs are laced with a whip stitch, and the beginning and end of the lace is concealed under the stitches on the back of the belt.

I have presented ideas for some very attractive belts, but have barely scratched the surface as far as design ideas are concerned. Make a quantity of copies of the graph, and “doodle” with any ideas you have. Once you have created the design on the graph, take a piece of belt strip and make a short sample of your design to see if you like the idea, or if you need to make minor changes to improve it.

Have fun and create your own “*SIGNATURE*” designs!

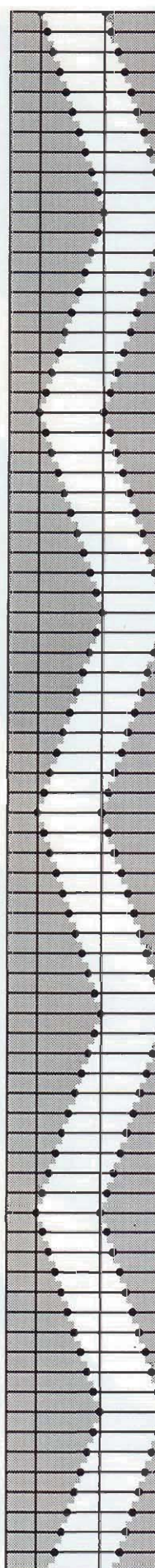
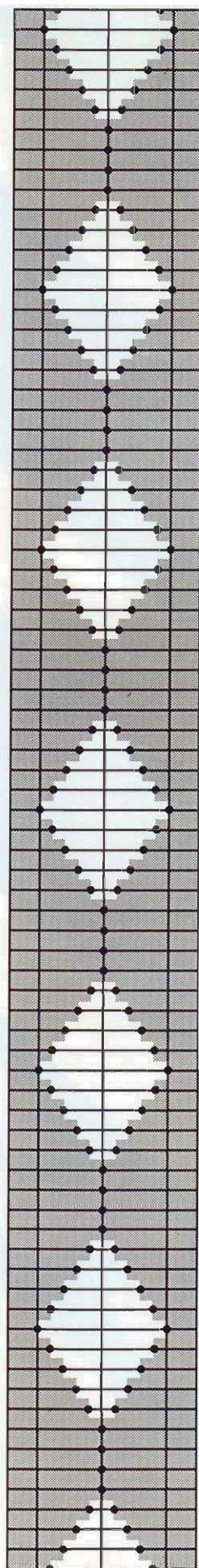
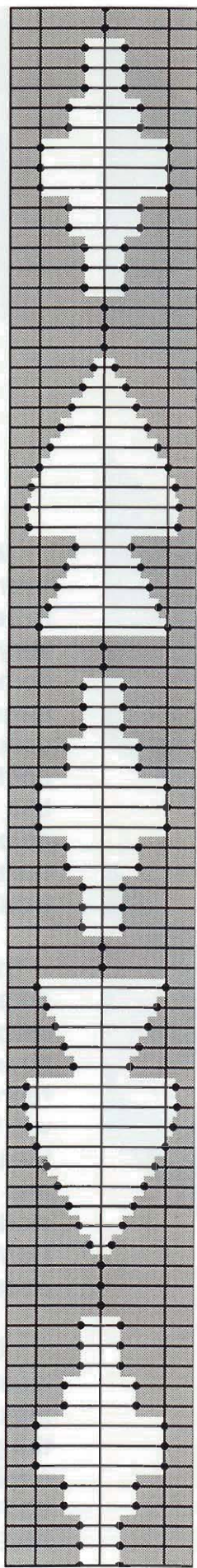
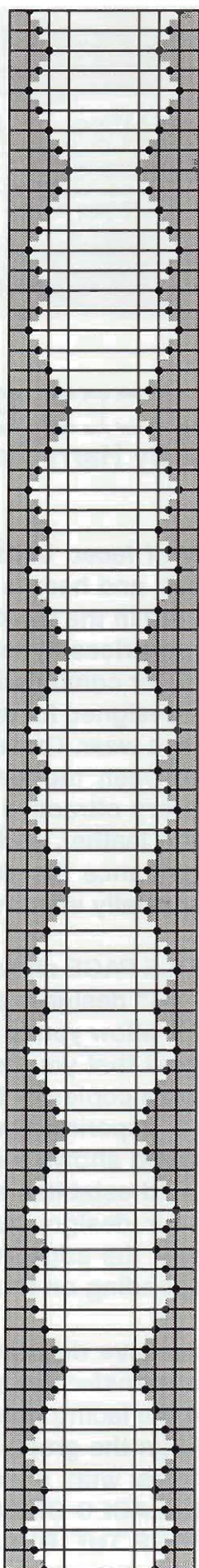
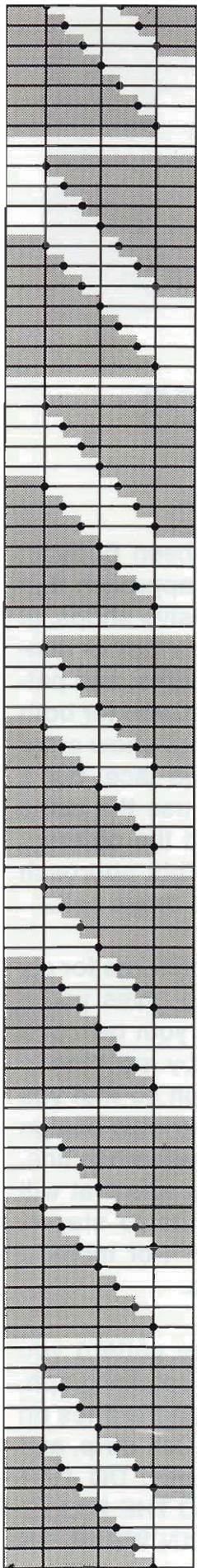


AN EMPLOYEE STOCK OWNERSHIP PROGRAM CO.

© Copyright 1995 by Tandy Leather Co.  
Fort Worth, Texas 76140

No part of this or any other page may be reprinted  
without written permission. Printed in U.S.A.









the end of the billet, or at a point where the buckle will not rub on the lace. If all these holes confuse you, and they certainly can, color or pencil in the lace, on the graph, and use it as a reference guide while you are lacing the belt. From my own experience, this provides a good "road map" as you lace.

The lacing holes are spaced 1/8" apart, and I have used 1/8" lace to do the simple whip stitch that forms the pattern. Use a size No. 0 (5/64") punch in a rotary or plier punch, rather than using a drive punch that might open the hole too much if driven too deep. Be sure to center the punch tube over the reference mark, so that the lacing will be as even as possible. If you want to make a wider, or narrower belt, make your own graph, making sure that you space the lines 1/8" apart.

Use a No. 8076, size 2, Bevel Eze Edge Beveler to bevel the edge of the belt, so that the lace will lay smoothly over the edge. Punch all holes before dyeing and finishing the belt, and do all dyeing and finishing before lacing.

These designs are laced with a whip stitch, and the beginning and end of the lace is concealed under the stitches on the back of the belt.

I have presented ideas for some very attractive belts, but have barely scratched the surface as far as design ideas are concerned. Make a quantity of copies of the graph, and "doodle" with any ideas you have. Once you have created the design on the graph, take a piece of belt strip and make a short sample of your design to see if you like the idea, or if you need to make minor changes to improve it.

Have fun and create your own "SIGNATURE" designs!



AN EMPLOYEE STOCK OWNERSHIP PROGRAM CO.

© Copyright 1995 by Tandy Leather Co.  
Fort Worth, Texas 76140

No part of this or any other page may be reprinted without written permission. Printed in U.S.A.