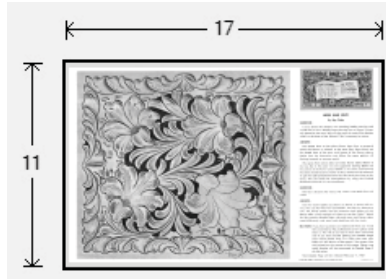




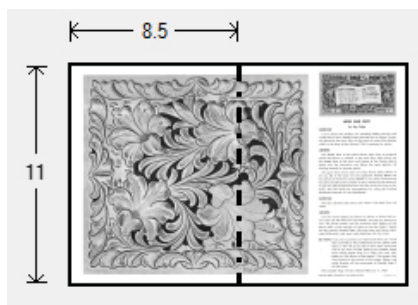
Doodle Page Digital Download

This PDF file contains 1 (one) Doodle Page. The PDF has been put together to give you options when it comes to printing. Pages and patterns that are larger than 8½x11 have been provided in two formats:



1) Full Size

If you would like to have a full size print out, take the full size pages to your local print shop and they can print it for you. All full size Doodle Pages are 11x17



2) Tiled

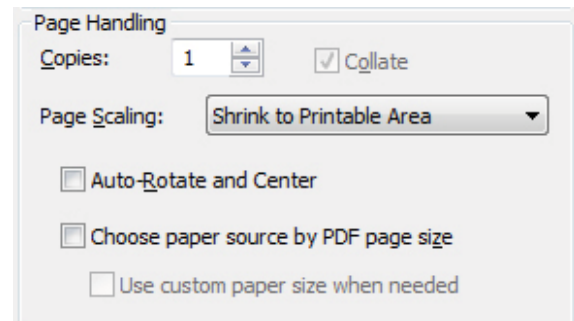
The tiled pages give you the option of printing the full sized Doodle Pages at home. You print the tiled pages and then assemble them to make the larger patterns.

The Doodle Page PDF files are typically laid out like this:

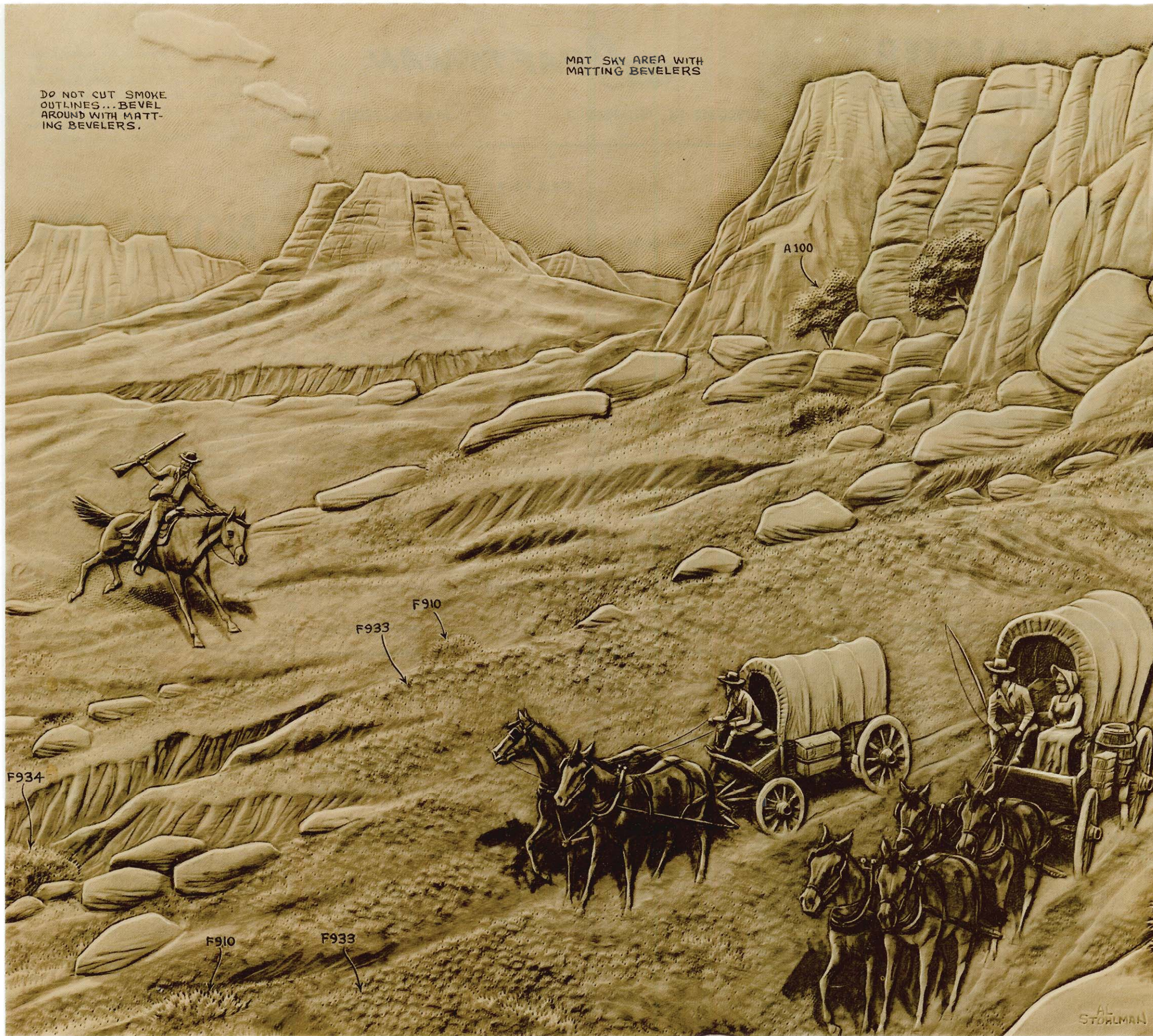
Front – full sized, front – tiled, back – full sized, back – tiled

(Some Doodle Pages do not have backs)

Please note: When printing on a home printer, the edges may get cut off. To avoid this, make sure “Page Scaling” is set to “Shrink to Printable Area” in the Adobe Reader print dialogue box. This will decrease the size of the Doodle Page a very small amount.



You may take this PDF file to your local print shop to have the full-size pages printed for your own personal use.



DO NOT CUT SMOKE
OUTLINES... BEVEL
AROUND WITH MATT-
ING BEVELERS.

MAT SKY AREA WITH
MATTING BEVELERS

A 100

F 933 F 910

F 934

F 910 F 933

AL
STOHLMAN

DOODLE PAGE *of the* **MONTH**

EACH A LESSON IN ITSELF
A NEW PAGE EACH MONTH
CARVED BY THE FOREMOST
LEATHER CRAFTSMEN
FEATURING NEW DESIGNS,
NEW TOOLS, AND NEW IDEAS
TO AID AND ASSIST THE
CRAFT IN GENERAL

DOODLE PAGES ARE
FREE WITH PURCHASES
AT YOUR CRAFT TOOL
DEALER. ASK FOR
YOUR COPY TODAY!

PAGE 5 **SERIES 3B**



INDIAN COUNTRY by Al Stohlman

No. 1. This is the first of a series of four scenes that when combined, will complete the scene as shown above. The picture size is 21" x 24". The scenes may be carved as individual pictures or joined as desired. Due to the lack of space, it would be impossible to describe all of the carving instructions here. Therefore, it is suggested that the craftsman (unless fully familiar with figure carving) obtain one or more of the following books by Al Stohlman: Figure Carving; Belts Galore; Lucky Eight Belt Book; Pictorial Carving, etc. All of these books carry full details on carving the tiny figures and using the figure carving tools in the proper manner. Pictorial Carving shows in great detail the uses of the newest figure carving tools . . . this book is a "must" for those interested in figure carving.

INDIAN COUNTRY should prove challenging to the most advanced craftsman. One of the scouts obviously has urgent information to relay to the wagon train. The smoke signals from the distant butte indicate trouble ahead . . . and the Indian scout in the right foreground is trying to keep his horse from whinnying and giving his position away. He will no doubt mount his pony and ride up the ravine to the right at full speed to rejoin his red brothers and have a pow-wow on what to do about the invaders.

The brush and grassy effect of the ground cover is created with #F933 and #F910. Tool impressions are placed close together and overlapped for the dense effect. The fine details of the harness and wagons must be worked out with the small figure carving bevelers and the #3 Modeling tool. The lines (reins) are cut after all other work has been completed. More carving details will be furnished on the following pages, as space permits.

MAT SKY AREA WITH
MATTING BEVELERS

DO NOT CUT SMOKE
OUTLINES... BEVEL
AROUND WITH MATT-
ING BEVELERS.



A100

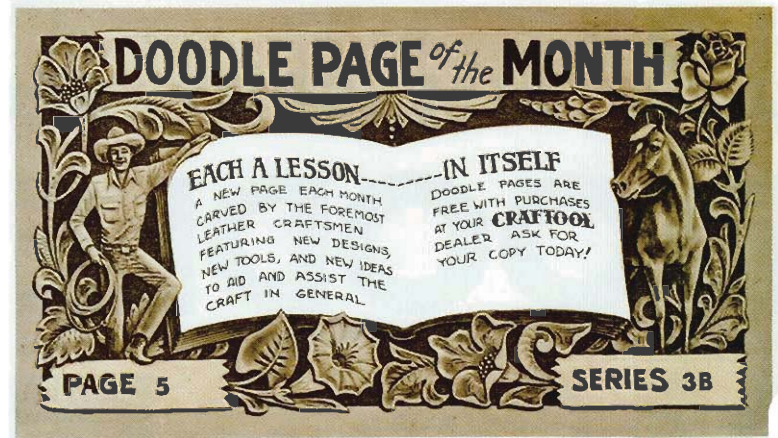
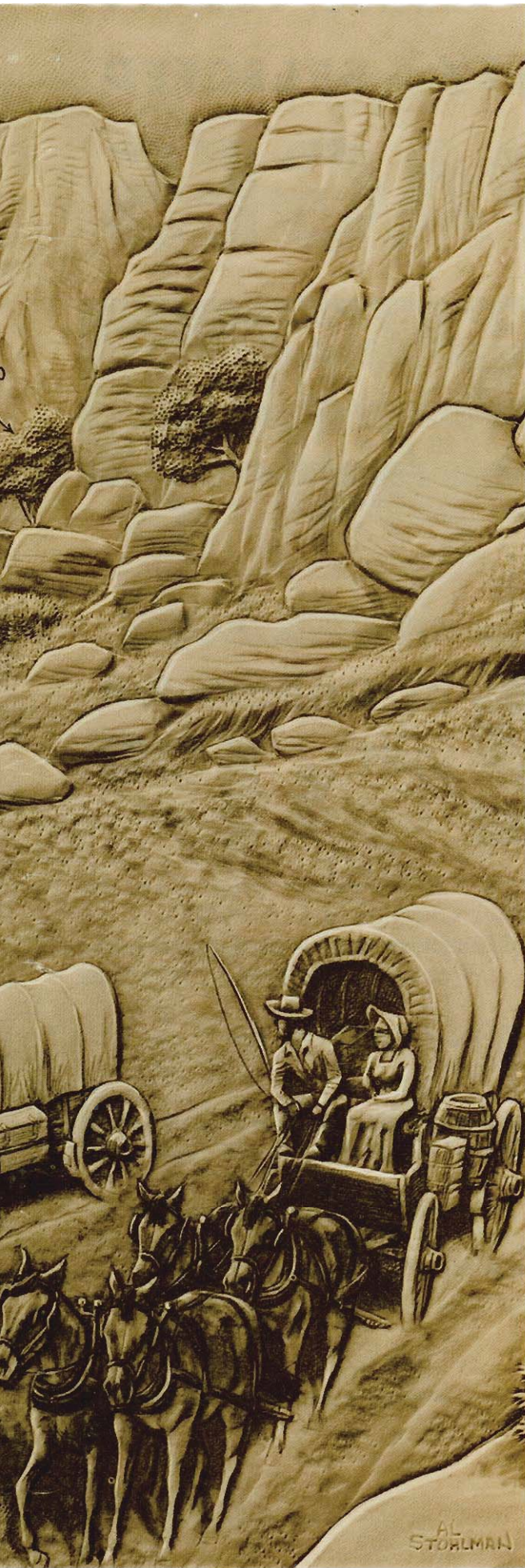
F933

F910

F934

F910

F933



INDIAN COUNTRY by Al Stohlman

No. 1. This is the first of a series of four scenes that when combined, will complete the scene as shown above. The picture size is 21" x 24". The scenes may be carved as individual pictures or joined as desired. Due to the lack of space, it would be impossible to describe all of the carving instructions here. Therefore, it is suggested that the craftsman (unless fully familiar with figure carving) obtain one or more of the following books by Al Stohlman: *Figure Carving*; *Belts Galore*; *Lucky Eight Belt Book*; *Pictorial Carving*, etc. All of these books carry full details on carving the tiny figures and using the figure carving tools in the proper manner. **Pictorial Carving** shows in great detail the uses of the newest figure carving tools . . . this book is a "must" for those interested in figure carving.

INDIAN COUNTRY should prove challenging to the most advanced craftsman. One of the scouts obviously has urgent information to relay to the wagon train. The smoke signals from the distant butte indicate trouble ahead . . . and the Indian scout in the right foreground is trying to keep his horse from whinnying and giving his position away. He will no doubt mount his pony and ride up the ravine to the right at full speed to rejoin his red brothers and have a pow-wow on what to do about the invaders.

The brush and grassy effect of the ground cover is created with #F933 and #F910. Tool impressions are placed close together and overlapped for the dense effect. The fine details of the harness and wagons must be worked out with the small figure carving bevelers and the #3 Modeling tool. The lines (reins) are cut after all other work has been completed. More carving details will be furnished on the following pages, as space permits.