



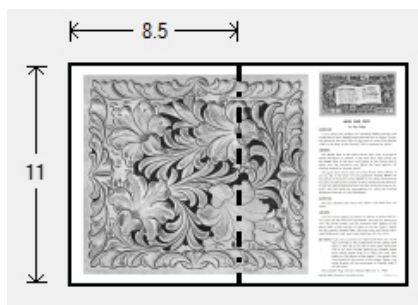
Doodle Page Digital Download

This PDF file contains 1 (one) Doodle Page. The PDF has been put together to give you options when it comes to printing. Pages and patterns that are larger than 8½x11 have been provided in two formats:



1) Full Size

If you would like to have a full size print out, take the full size pages to your local print shop and they can print it for you. All full size Doodle Pages are 11x17



2) Tiled

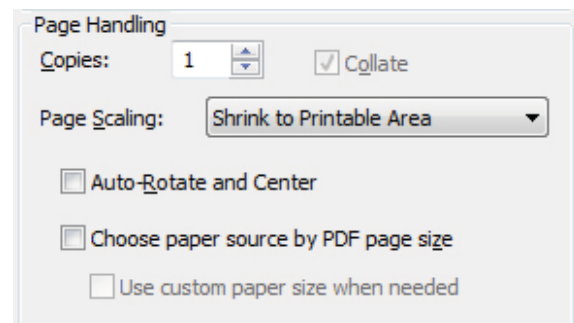
The tiled pages give you the option of printing the full sized Doodle Pages at home. You print the tiled pages and then assemble them to make the larger patterns.

The Doodle Page PDF files are typically laid out like this:

Front – full sized, front – tiled, back – full sized, back – tiled

(Some Doodle Pages do not have backs)

Please note: When printing on a home printer, the edges may get cut off. To avoid this, make sure “Page Scaling” is set to “Shrink to Printable Area” in the Adobe Reader print dialogue box. This will decrease the size of the Doodle Page a very small amount.



You may take this PDF file to your local print shop to have the full-size pages printed for your own personal use.



DOODLE PAGE of the **MONTH**

EACH A LESSON — **IN ITSELF**
 A NEW PAGE EACH MONTH
 CARVED BY THE FOREMOST
 LEATHER CRAFTSMEN
 FEATURING NEW DESIGNS,
 NEW TOOLS, AND NEW IDEAS
 TO AID AND ASSIST THE
 CRAFT IN GENERAL.

DOODLE PAGES ARE
 FREE WITH PURCHASES
 AT YOUR CRAFT TOOL
 DEALER. ASK FOR
 YOUR COPY TODAY!

PAGE 8 SERIES 2D

EASY CORNERS

by Ben Moody

These patterns have been especially designed for less experienced leathercrafters to begin doing their own lay-outs. They are very useful in many situations where you want to just dress up one or more corners of a relatively plain design, such as on a table top. They will work very nicely when used to completely frame an area, as on an album cover where the center contains a figure scene or an inscription. Can you imagine a handbag with the rose pattern in one or more corners and the balance done with a basket-weave tool? How about a Clock? Use any of the four designs to frame the face. Get the message? These simple patterns together with your imagination will produce a wealth of beautiful and functional designs.

The New Tandy Leathercraft Dye and Cova Dye was used to color these patterns with Leather Glow used as a finish.

Have you been hesitant to start your own lay-out work? Why wait? Here is an excellent vehicle to get you started. You will find it to be quite easy.



A888

B204

M882

M883

P213

P370

B936

S350

V463

B701



S932

A888

P213

P217

A104

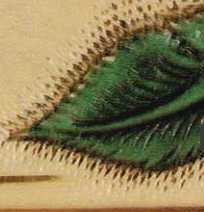
B936

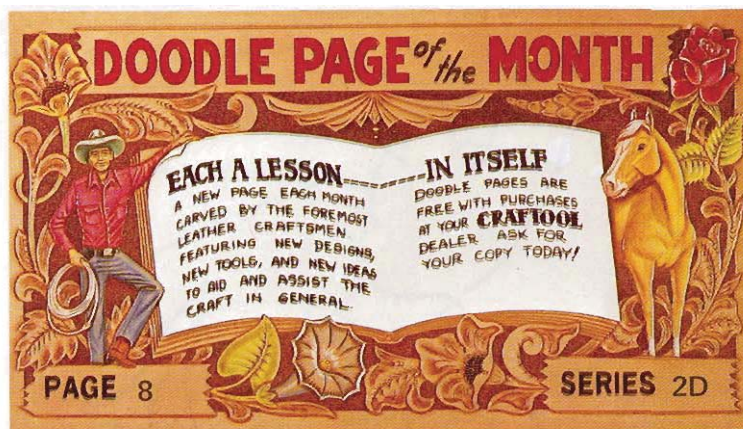
U849

B701

P370

C828





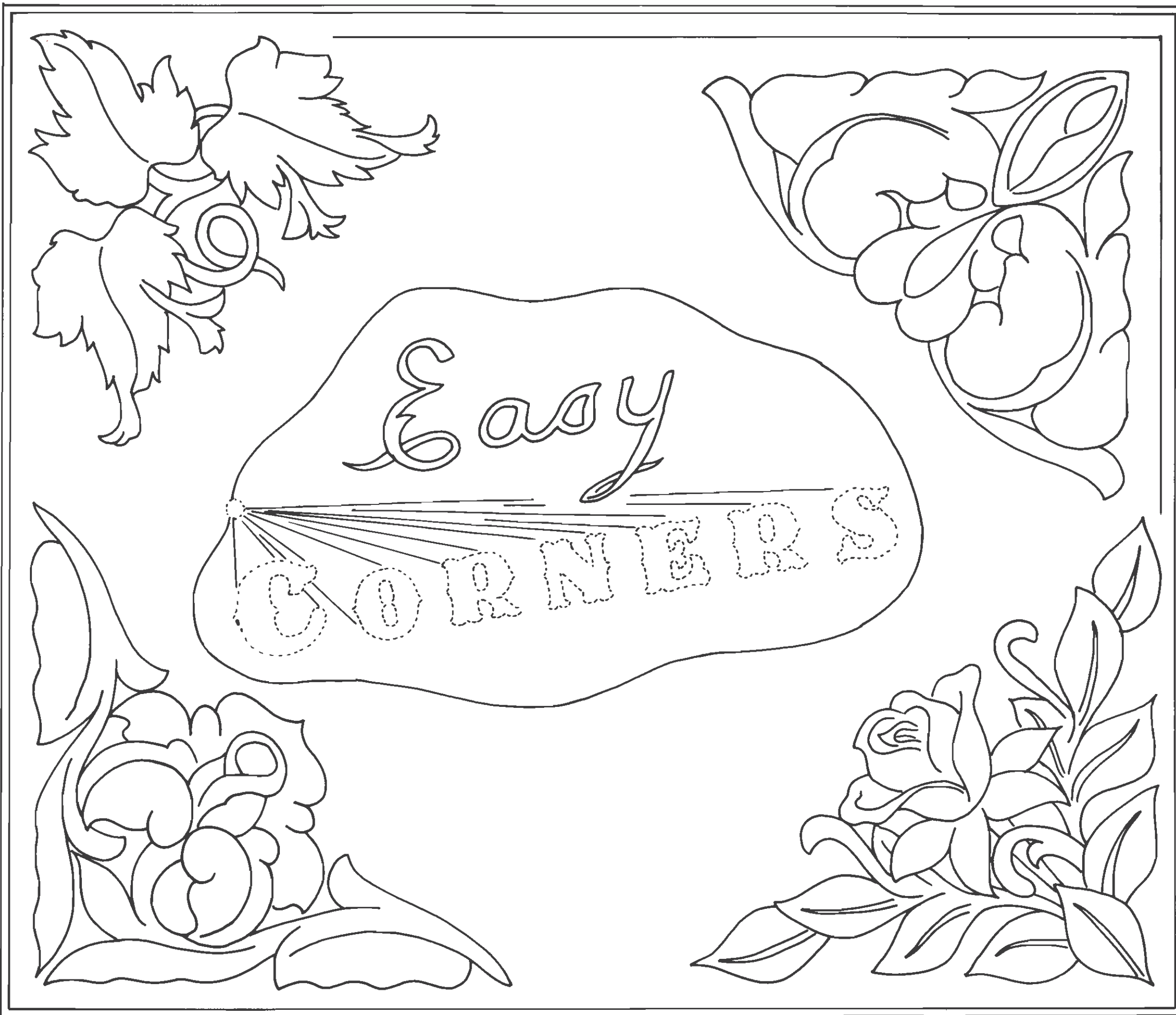
EASY CORNERS

by Ben Moody

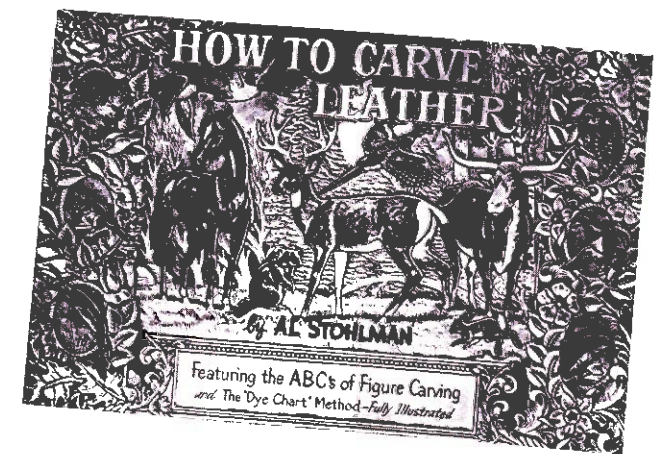
These patterns have been especially designed for less experienced leathercrafters to begin doing their own lay-outs. They are very useful in many situations where you want to just dress up one or more corners of a relatively plain design, such as on a table top. They will work very nicely when used to completely frame an area, as on an album cover where the center contains a figure scene or an inscription. Can you imagine a handbag with the rose pattern in one or more corners and the balance done with a basket-weave tool? How about a Clock? Use any of the four designs to frame the face. Get the message? These simple patterns together with your imagination will produce a wealth of beautiful and functional designs.

The New Tandy Leathercraft Dye and Cova Dye was used to color these patterns with Leather Glow used as a finish.

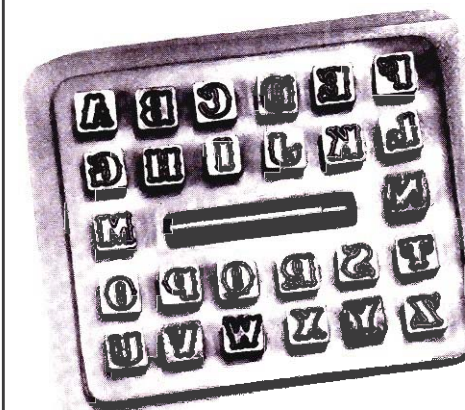
Have you been hesitant to start your own lay-out work? Why wait? Here is an excellent vehicle to get you started. You will find it to be quite easy.



CRAFTOOL "INVERTED LEATHER CARVING" Book gives you an art that requires less tools than regular carving. Al Stohlman shows you the how-to's of inverted leather carving through dozens of patterns, design suggestions, tips and hints in this valuable 48 page book.



CRAFTOOL "HOW TO CARVE LEATHER" Book by Al Stohlman, has 48 big 18 1/2" x 12 1/2" pages. He instructs in detail how to assemble 11 projects. This book includes 30 illustrated dye charts, 40 interchangeable photocarve patterns, and 6 complete alphabets of 3/8" to 1 1/2" letters.



CRAFTOOL ALPHABET STAMPS personalize your leather projects with name or initials. It's easy! Just a tap of the mallet renders a perfect letter. Top quality metal for long life. Packaged in plastic case and includes 2 3/4" long handle.
 8130 (1/2" Alphabet Stamps)
 8131 (3/4" Alphabet Stamps)
 8132 (1" Alphabet Stamps)
 8133 Extra Steel Handle

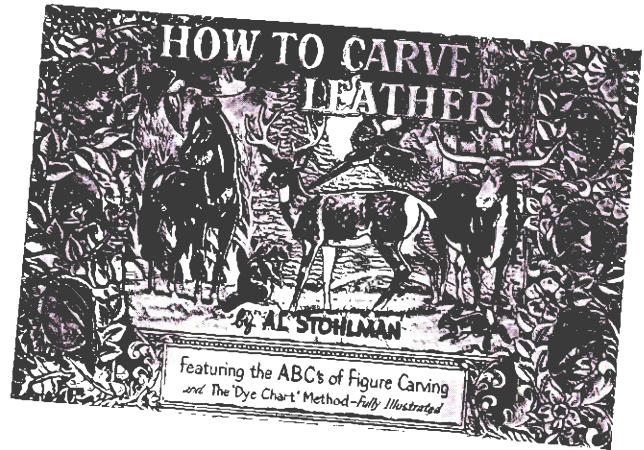


Easy
CORNER

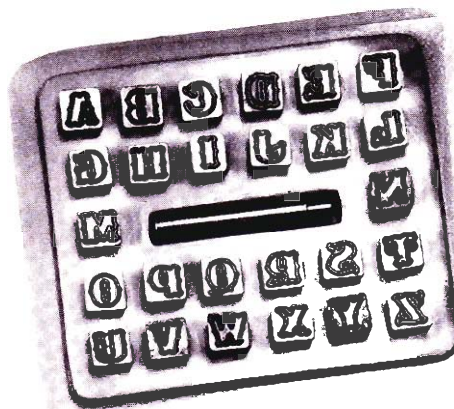




CRAFTOOL "INVERTED LEATHER CARVING" Book gives you an art that requires less tools than regular carving. Al Stohlman shows you the how-to's of inverted leather carving through dozens of patterns, design suggestions, tips and hints in this valuable 48 page book.



CRAFTOOL "HOW TO CARVE LEATHER" Book by Al Stohlman, has 48 big 18 1/2" x 12 1/2" pages. He instructs in detail how to assemble 11 projects. This book includes 30 illustrated dye charts, 40 interchangeable photocarve patterns, and 6 complete alphabets of 3/8" to 1 1/2" letters.



CRAFTOOL ALPHABET STAMPS personalize your leather projects with name or initials. It's easy! Just a tap of the mallet renders a perfect letter. Top quality metal for long life. Packaged in plastic case and includes 2 3/4" long handle.
 8130 (1/2" Alphabet Stamps)
 8131 (3/4" Alphabet Stamps)
 8132 (1" Alphabet Stamps)
 8133 Extra Steel Handle