

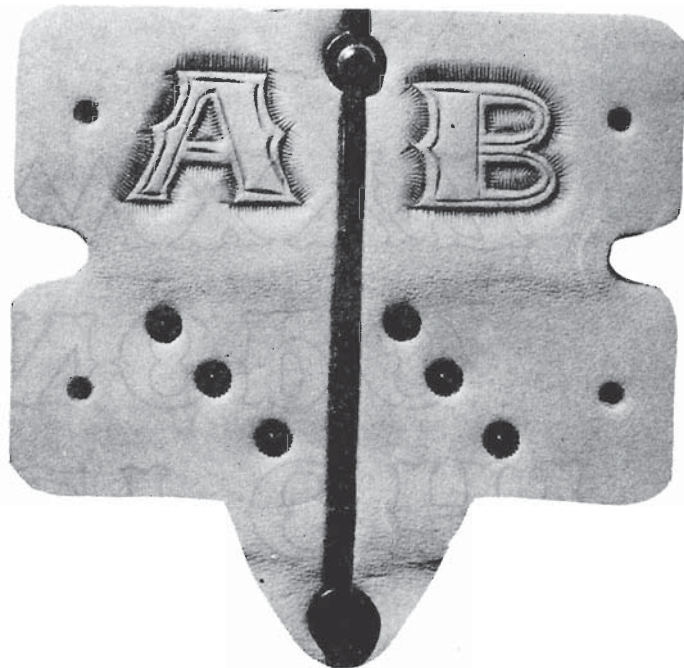
# DOUBLE - TREY KEYCASE Instructions



**Tandy** 1928  
1979  
LEATHER COMPANY

Dampen leather evenly and allow surface moisture to evaporate. Stamp with design of your choice, or trace initials, etc., and carve. Allow to dry and apply thin coat of Neat-Lac. Allow Neat-Lac to dry thoroughly.

CRAFTAID TEMPLATES SAVE TIME, ELIMINATE TRACING. See Tandy's complete Leathercraft catalog for selection of Craftaid alphabets. CRAFTAIDS NEVER WEAR OUT; CAN BE USED OVER AND OVER.



USE THESE HANDY ALPHABETS

A B C D E F G H I  
J K L M N O P Q  
R S T U V W X Y Z

A B C D E F G H I  
J K L M N O P Q R  
S T U V W X Y Z

**BEST VALUES ANYWHERE!**

**94 STORES SERVE YOU —**

(No part of this or any other page may  
be reproduced without written permission)

PRINTED IN U.S.A.

**Standy**<sup>EST.  
1919</sup>  
**LEATHER COMPANY**