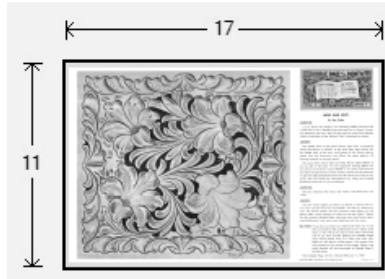




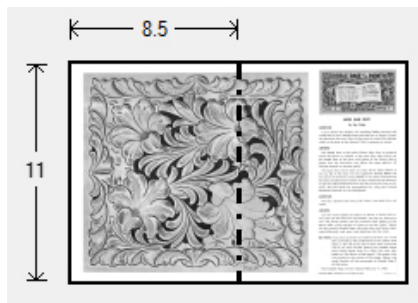
Doodle Page Digital Download

This PDF file contains 1 (one) Doodle Page. The PDF has been put together to give you options when it comes to printing. Pages and patterns that are larger than 8½x11 have been provided in two formats:



1) Full Size

If you would like to have a full size print out, take the full size pages to your local print shop and they can print it for you. All full size Doodle Pages are 11x17



2) Tiled

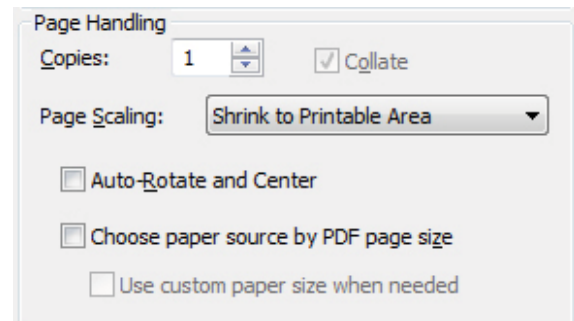
The tiled pages give you the option of printing the full sized Doodle Pages at home. You print the tiled pages and then assemble them to make the larger patterns.

The Doodle Page PDF files are typically laid out like this:

Front – full sized, front – tiled, back – full sized, back – tiled

(Some Doodle Pages do not have backs)

Please note: When printing on a home printer, the edges may get cut off. To avoid this, make sure “Page Scaling” is set to “Shrink to Printable Area” in the Adobe Reader print dialogue box. This will decrease the size of the Doodle Page a very small amount.



You may take this PDF file to your local print shop to have the full-size pages printed for your own personal use.

DOODLE PAGE OF THE MONTH

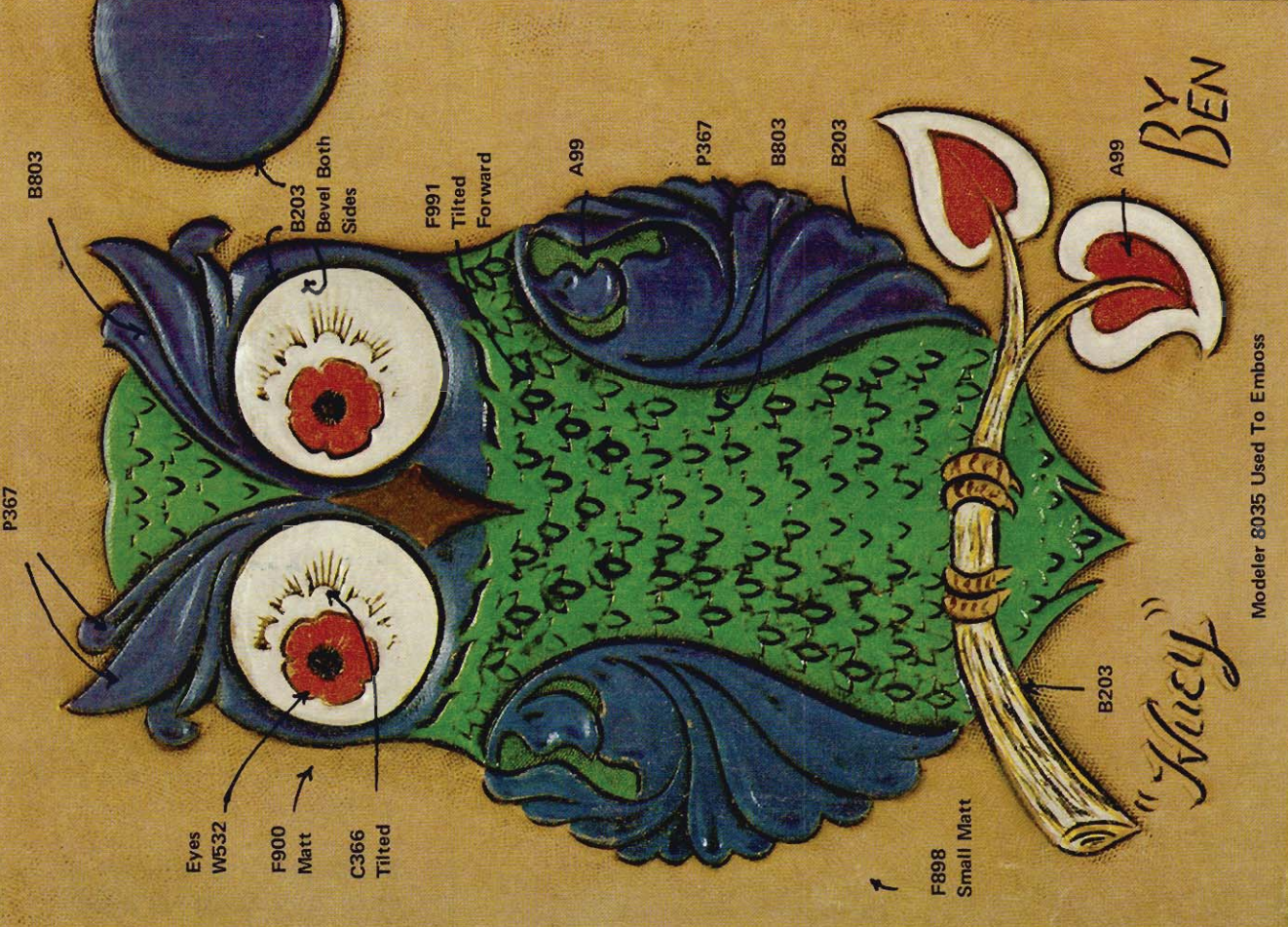
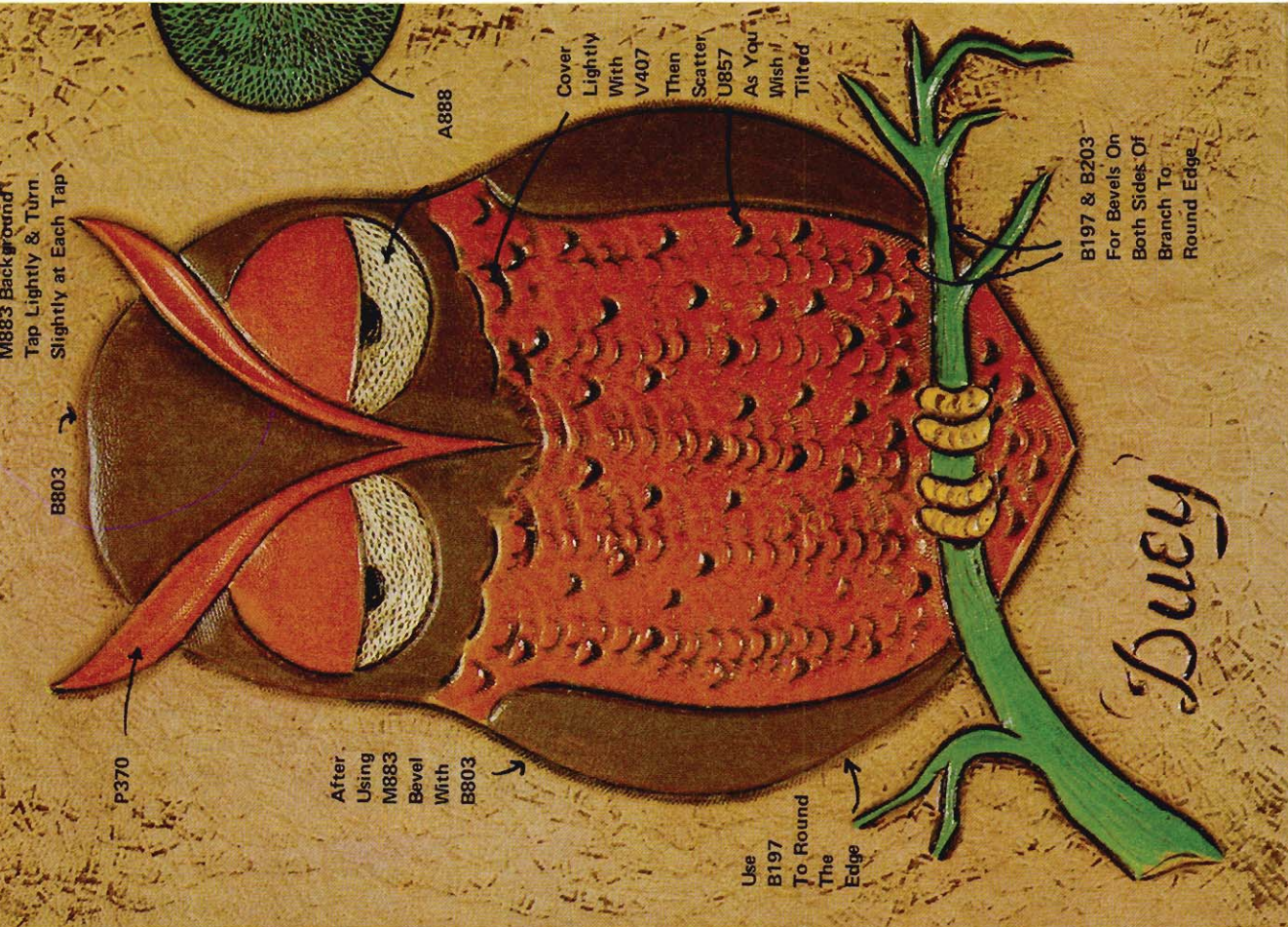
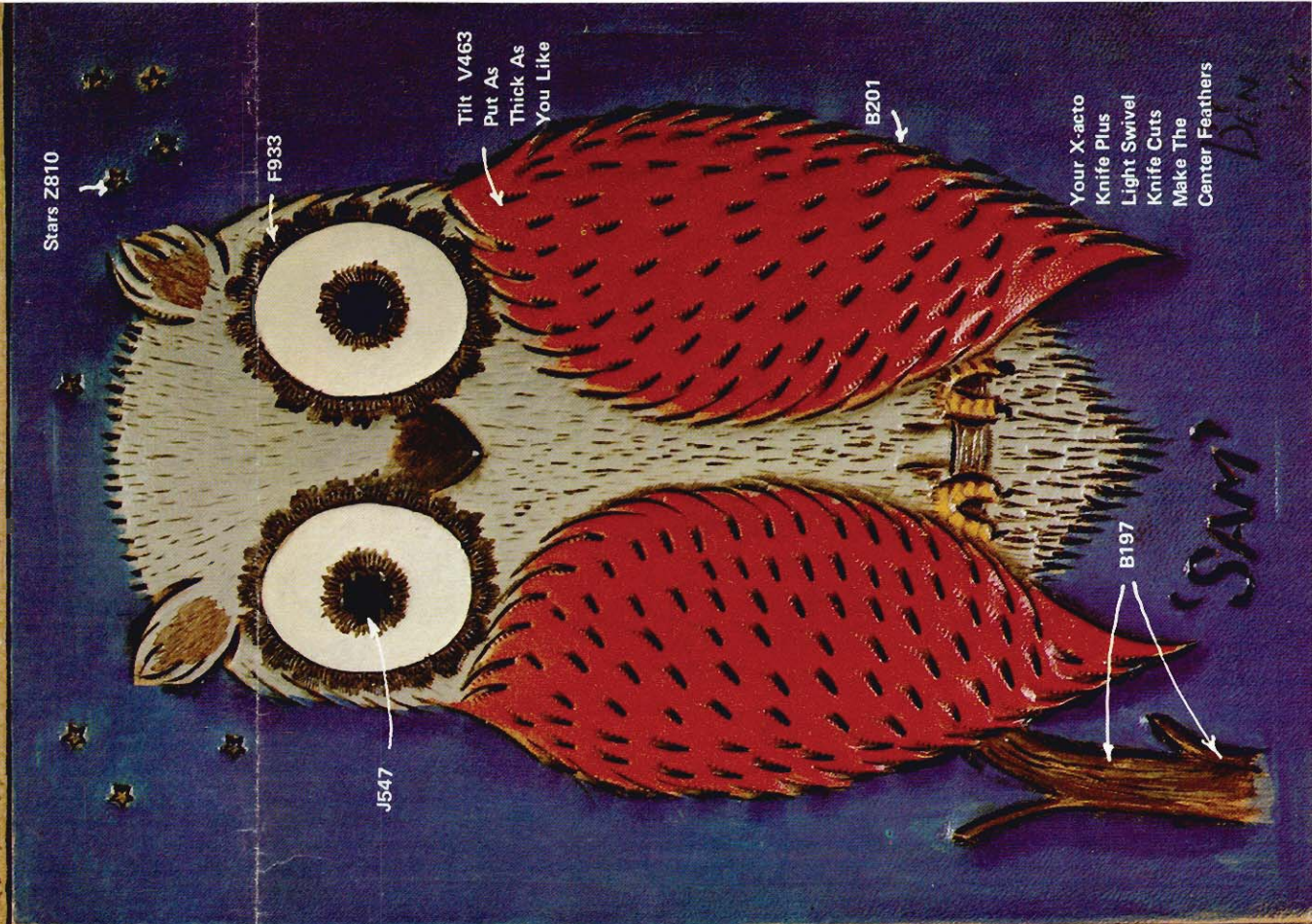
DOODLE PAGE 12, SERIES 1C

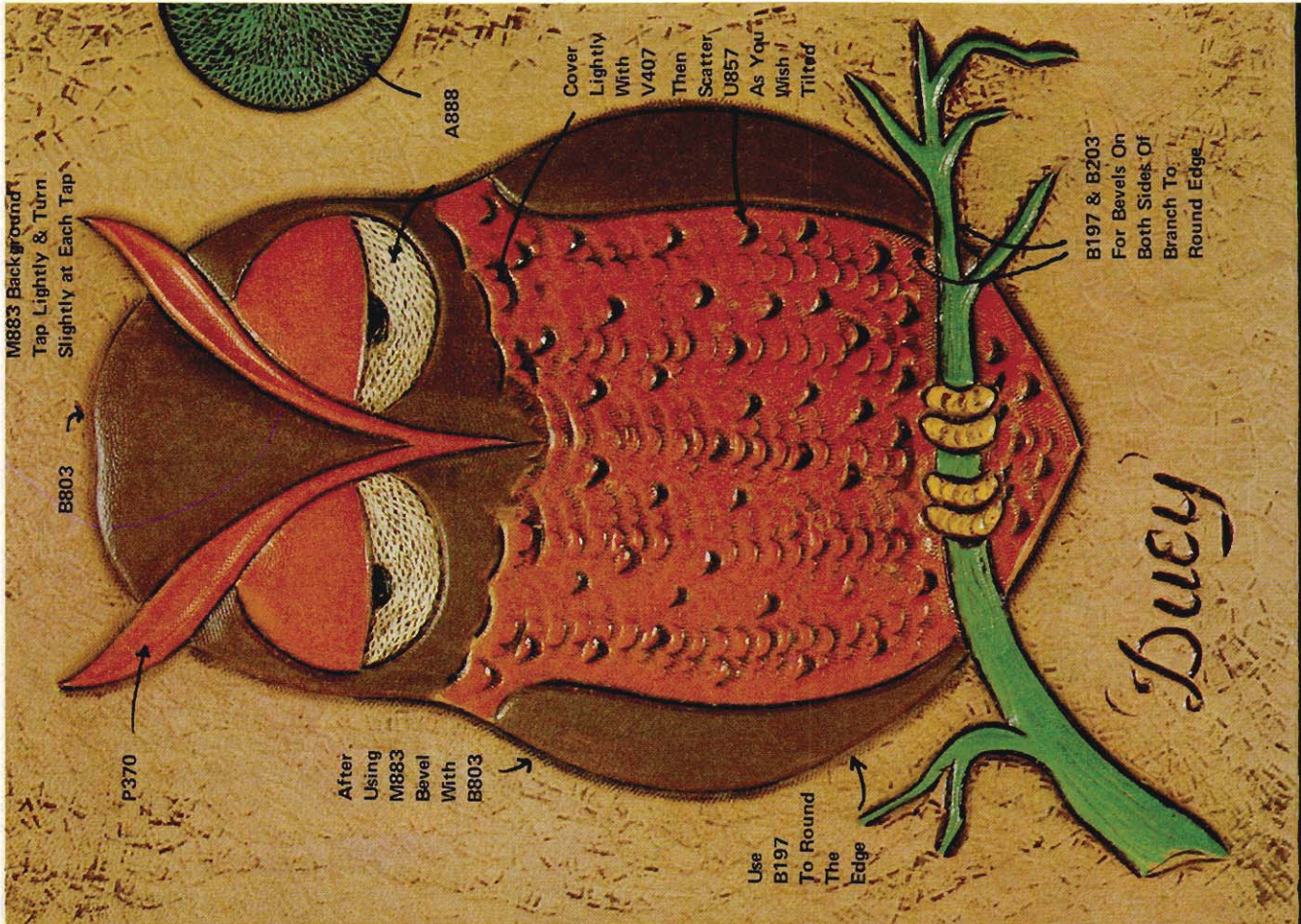
Here's a Quartet of "Night Owls" you'll enjoy carving and enjoy more when you hang 'em on your wall for all to see in a group.

If you haven't tried little pics like these you'll find them easy to do and fun to color in your favorite combinations. The knife work is not hard to do and your Craftool stamps can be used for the rest of the design. It's easy to emboss the little pics if you do it as soon as you finish the carving & stamping. Just move the leather to the edge of your table – hold it down against the table with one hand while you press & move your 8033 modeler under the area you wish to raise. Work the modeler in the area between index finger and second finger. If you spread these fingers you can tell exactly where your modeler is and can control the embossing. A little practice and you will want to emboss everything you do. Embossing gives a "Live Look" to your work.

If you like these little pics and want more of similar Doodle Pages let us know and we'll set 'em up for you. Have fun.

Ben Moody





M883 Background
Tap Lightly & Turn
Slightly at Each Tap

B803

P370

After
Using
M883
Bevel
With
B803

Cover
Lightly
With
V407
Then
Scatter
U857
As You
Wish!
Tilted

A888

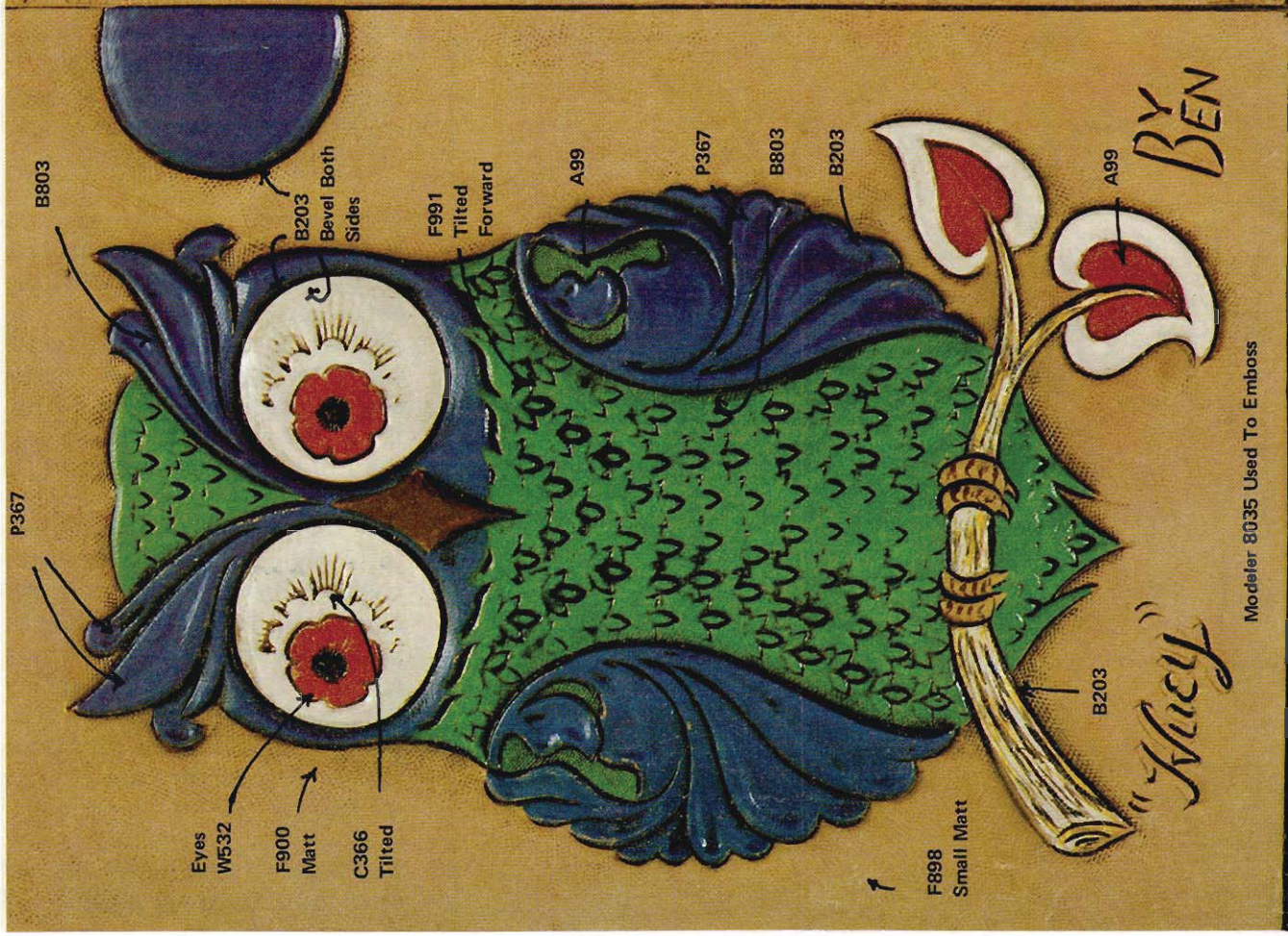
B197 & B203
For Bevels On
Both Sides Of
Branch To
Round Edge

Use
B197
To Round
The
Edge

DUEY



Stars Z810



P367

B803

Eyes
W532

F900
Matt

C366
Tilted

B203
Bevel Both
Sides

F991
Tilted
Forward

A99

P367

B803

B203

"MUCY"

BY BEN

F898
Small Matt

B203

Modeler 8035 Used To Emboss



Stars Z609

C455

B197

V406

DOODLE PAGE OF THE MONTH

DOODLE PAGE 12, SERIES 1C

Here's a Quartet of "Night Owls" you'll enjoy carving and enjoy more when you hang 'em on your wall for all to see in a group.

If you haven't tried little pics like these you'll find them easy to do and fun to color in your favorite combinations. The knife work is not hard to do and your Craftool stamps can be used for the rest of the design. It's easy to emboss the little pics if you do it as soon as you finish the carving & stamping. Just move the leather to the edge of your table – hold it down against the table with one hand while you press & move your 8033 modeler under the area you wish to raise. Work the modeler in the area between index finger and second finger. If you spread these fingers you can tell exactly where your modeler is and can control the embossing. A little practice and you will want to emboss everything you do. Embossing gives a "Live Look" to your work.

If you like these little pics and want more of similar Doodle Pages let us know and we'll set 'em up for you. Have fun.

Ben Moody



More
TIPS FROM BEN

For best results in coloring little pics like these you need to —

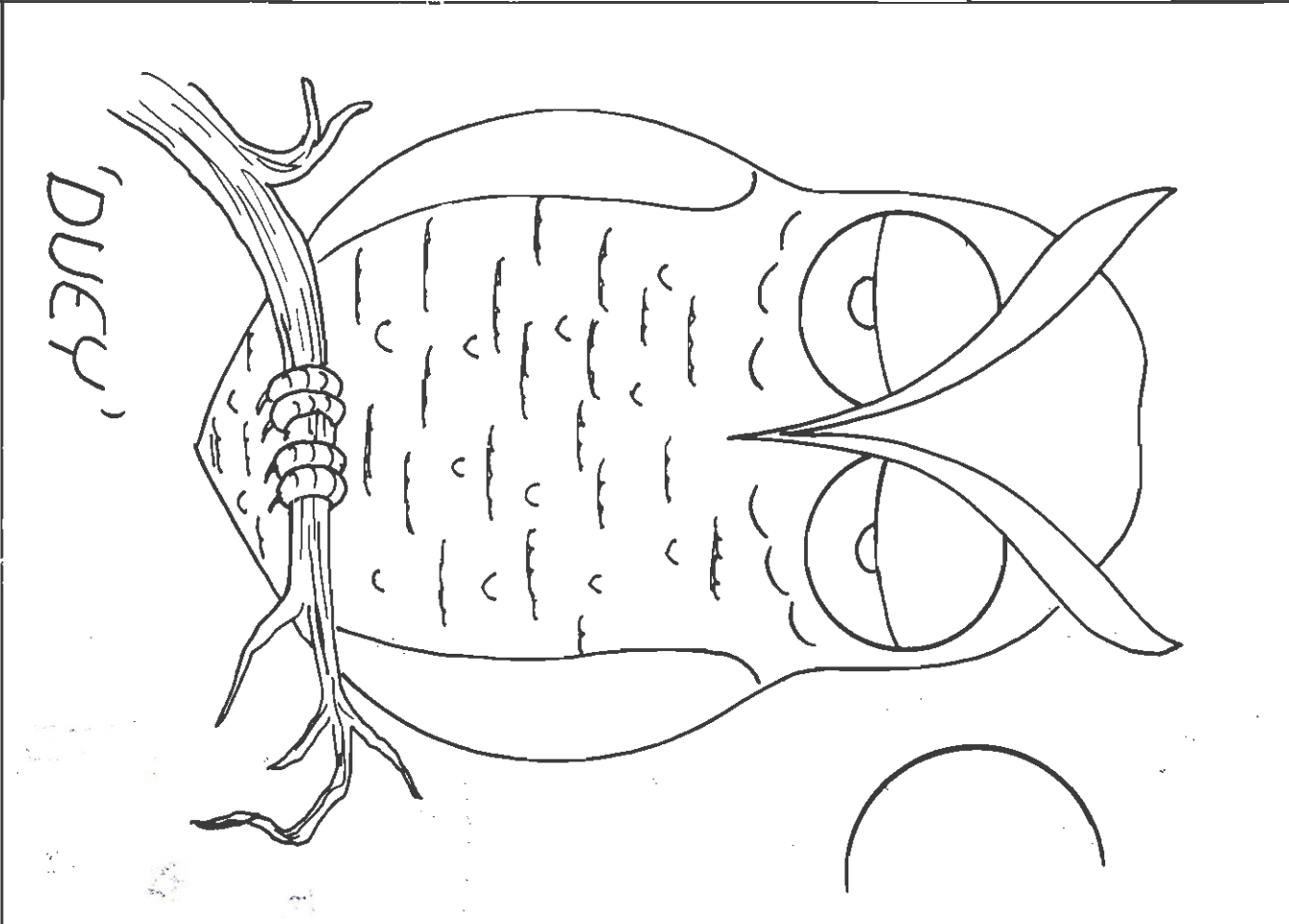
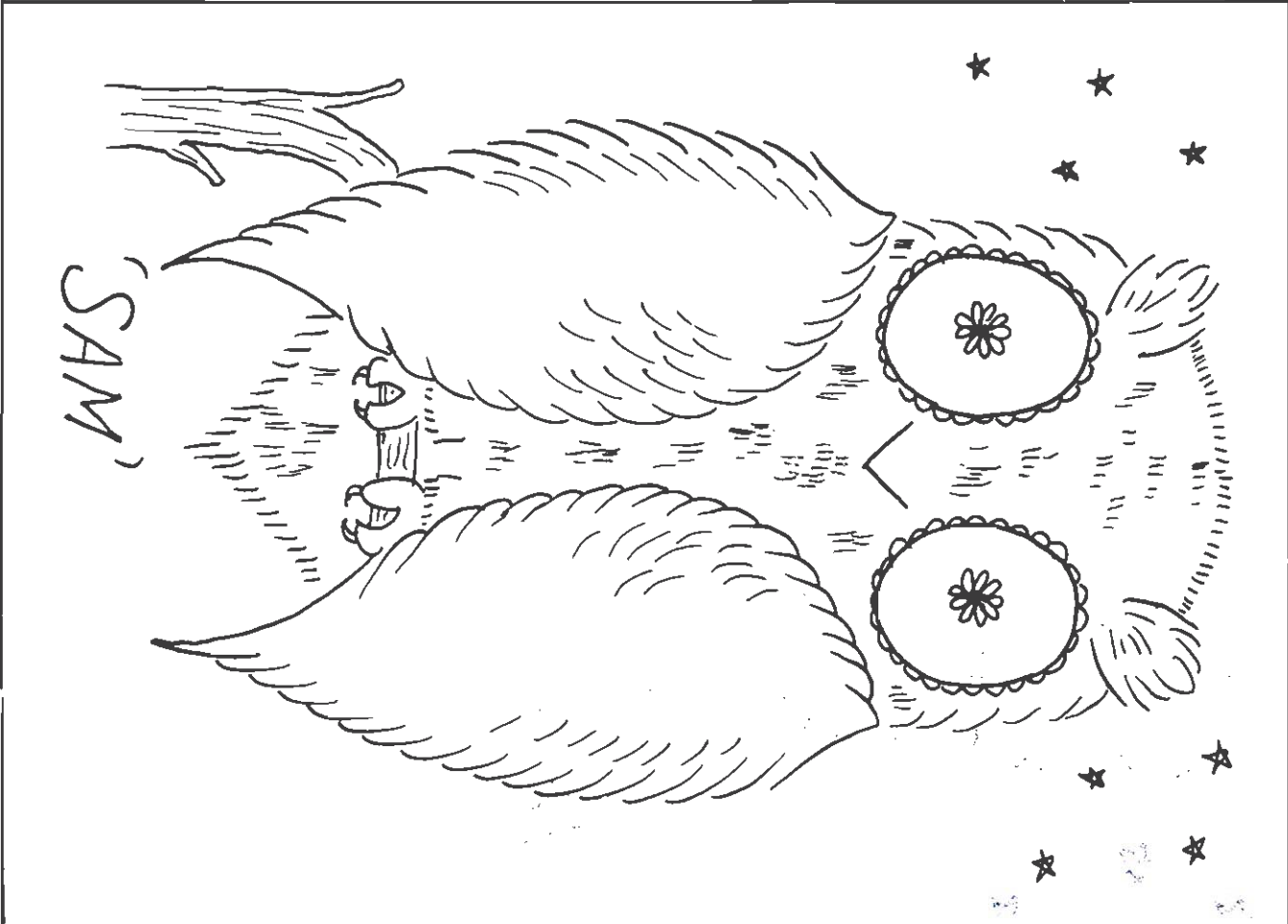
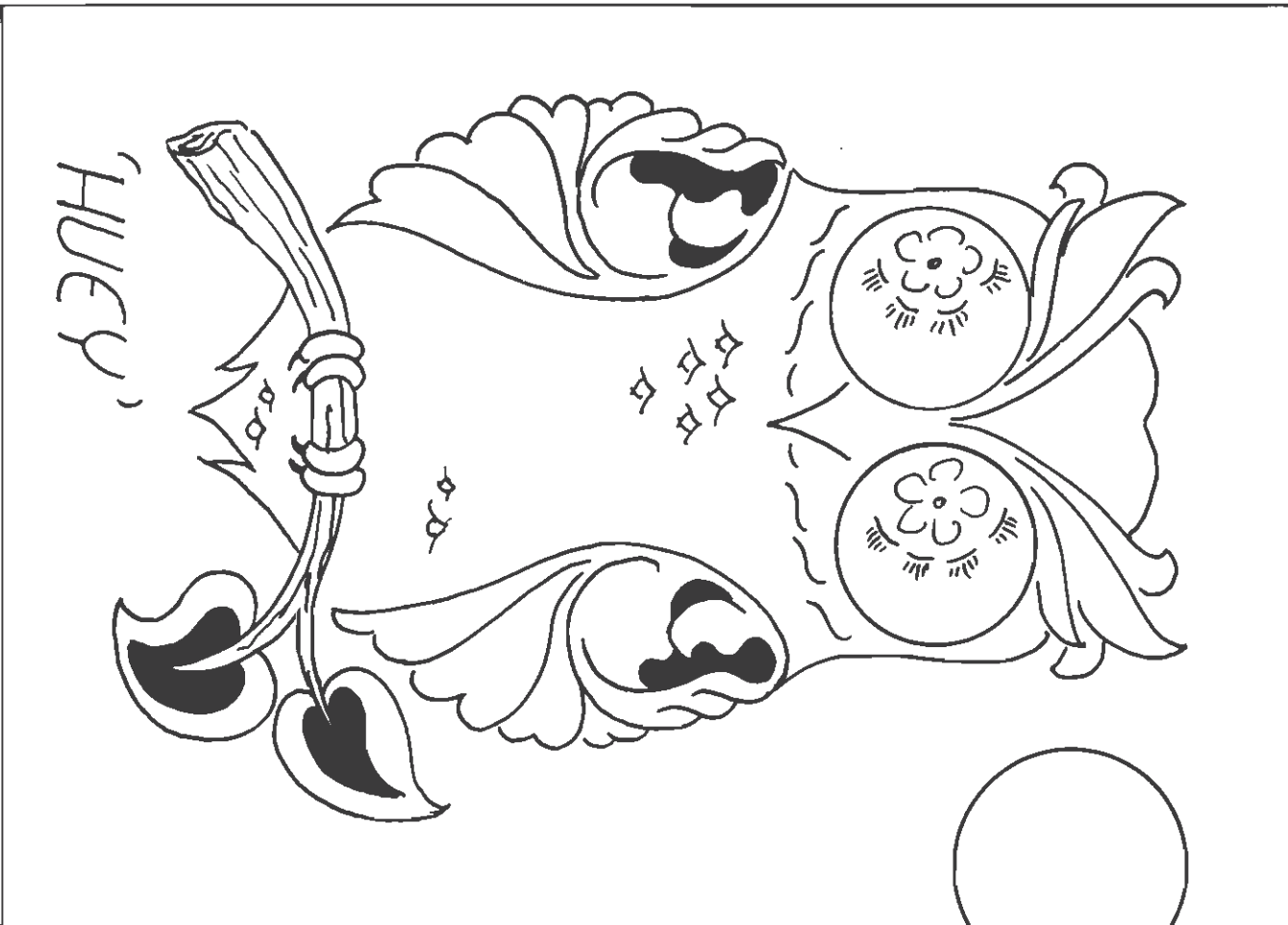
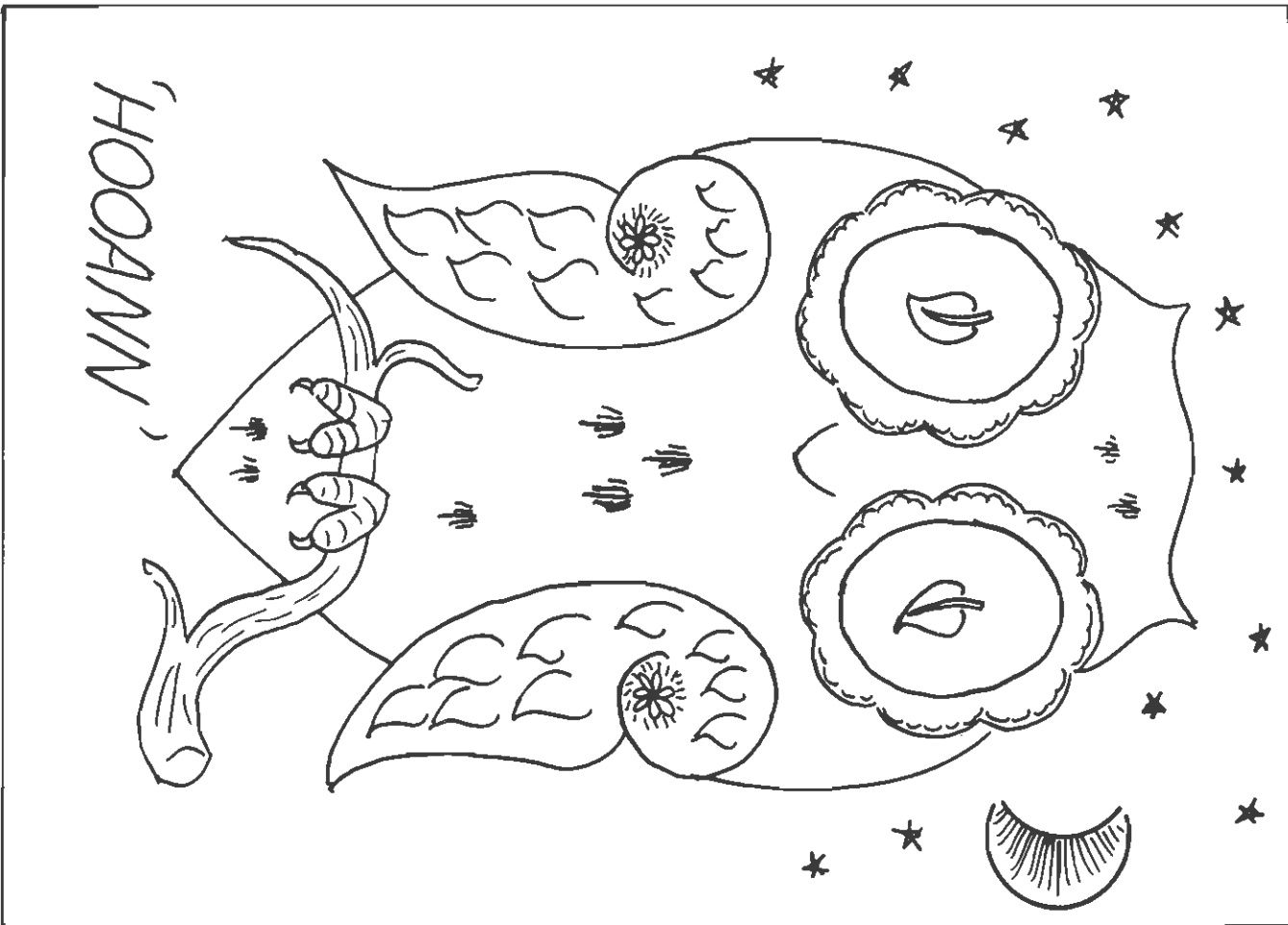
1. Do all of your COVA DYEING before you use anything else. COVA DYES can be mixed to make lighter shades if you wish. When finished you MUST give it at least overnight to cure.

2. After curing of the dye take a clean damp sponge and apply a liberal coat of CARNUABA CREAM. Don't scrub. Apply in a circular motion — put it on fast and evenly. Have several small clean cloths ready and remove the excess cream from the leather. Take a soft clean brush and brush the cream from the line cuts and stampings — wipe with the cloth as you get it to the surface areas. When this step is done — leave it alone until you're sure the pic is completely dried out.

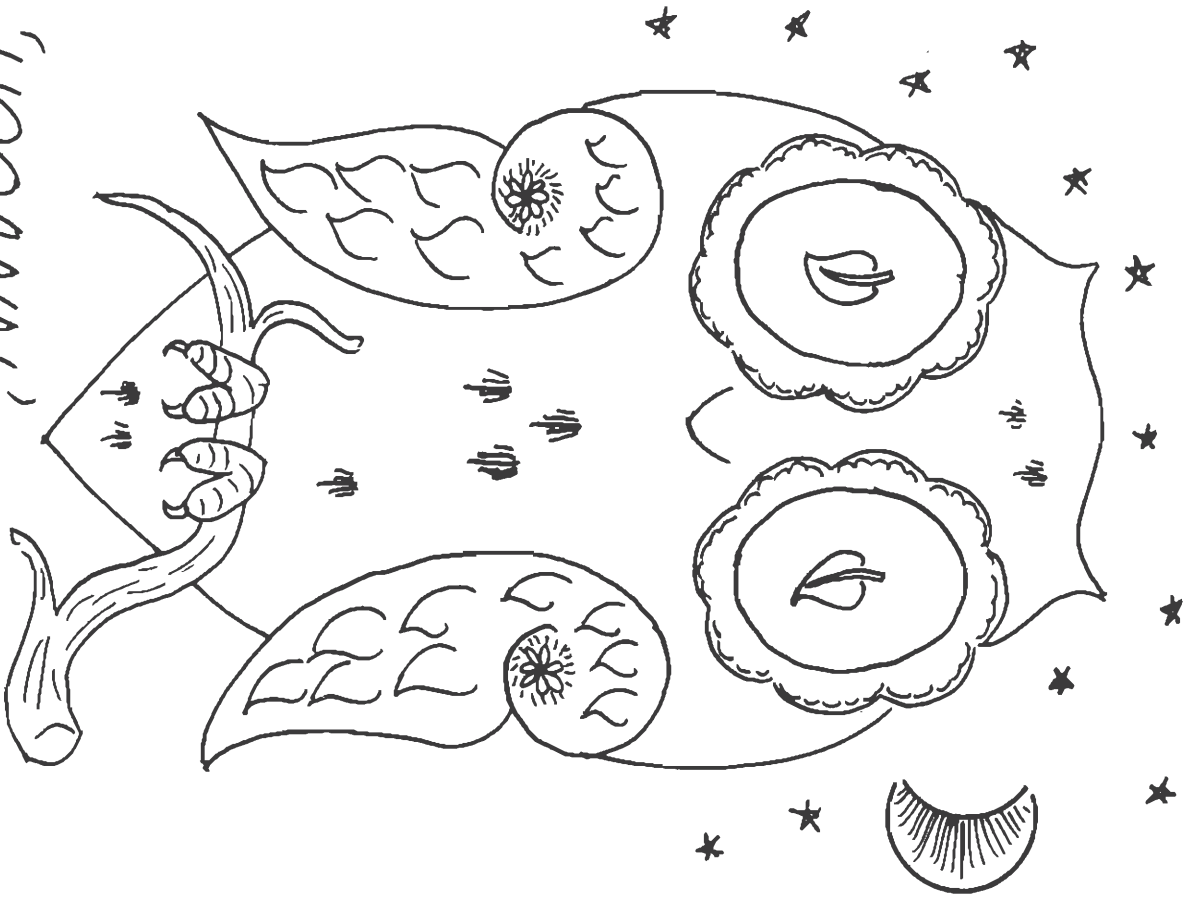
3. After it is dry take a soft textured cloth (or piece of clean wool shearling) and buff gently until you have a beautiful sheen.

4. To bring out the sharpest definition of your work apply a coat of LEATHER GLOW to the entire piece. Be sure to get it in all line cuts. LEATHER GLOW needs to dry fully then with a damp sponge you remove it from the areas you wish. GLOW is a beautiful product to give an extra neatness to your work. As you remove the GLOW — continuously clean your sponge with water so you don't grind the color into the pores. I suggest you test it first (be sure you have completed the necessary procedure as stated above). You'll be using GLOW on everything once you've learned the ease of controlling it.

5. Finally — after the GLOW has dried fully — Apply a light neat shine. Have fun.



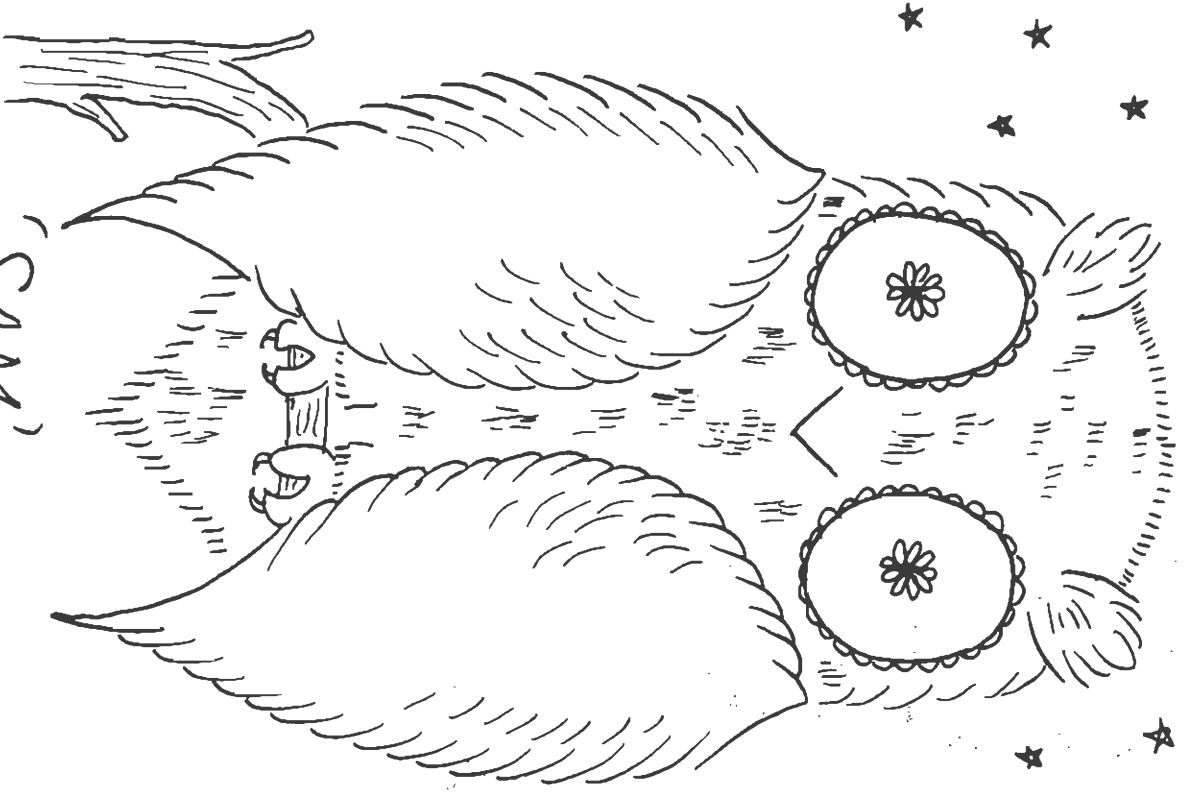
'HOOANN'



'HUEY'



'SAM'



'DUEY'



More
TIPS FROM BEN

For best results in coloring little pics like these you need to —

1. Do all of your COVA DYEING before you use anything else. COVA DYES can be mixed to make lighter shades if you wish. When finished you MUST give it at least overnight to cure.

2. After curing of the dye take a clean damp sponge and apply a **liberal** coat of CARNUABA CREAM. Don't scrub. Apply in a circular motion — put it on fast and evenly. Have several small clean cloths ready and remove the excess cream from the leather. Take a soft clean brush and brush the cream from the line cuts and stampings — wipe with the cloth as you get it to the surface areas. When this step is done — leave it alone until you're sure the pic is completely dried out.

3. After it is dry take a soft textured cloth (or piece of clean wool shearling) and buff gently until you have a beautiful sheen.

4. To bring out the sharpest definition of your work apply a coat of LEATHER GLOW to the entire piece. Be sure to get it in all line cuts. LEATHER GLOW needs to dry fully then with a damp sponge you remove it from the areas you wish. GLOW is a beautiful product to give an extra neatness to your work. As you remove the GLOW — continuously clean your sponge with water so you don't grind the color into the pores. I suggest you test it first (be sure you have completed the necessary procedure as stated above). You'll be using GLOW on everything once you've learned the ease of controlling it.

5. Finally — after the GLOW has dried fully — Apply a light neat shine. Have fun.

