



## Doodle Page Digital Download

This PDF file contains 1 (one) Doodle Page. The PDF has been put together to give you options when it comes to printing. Pages and patterns that are larger than 8½x11 have been provided in two formats:



### 1) Full Size

If you would like to have a full size print out, take the full size pages to your local print shop and they can print it for you. All full size Doodle Pages are 11x17



### 2) Tiled

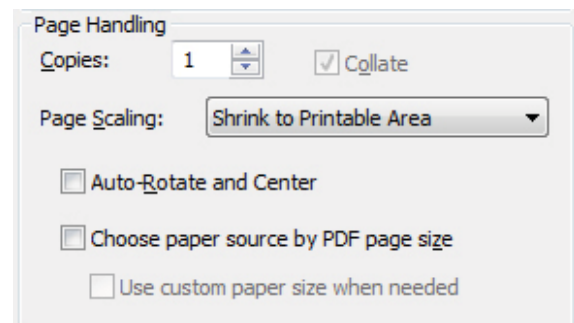
The tiled pages give you the option of printing the full sized Doodle Pages at home. You print the tiled pages and then assemble them to make the larger patterns.

The Doodle Page PDF files are typically laid out like this:

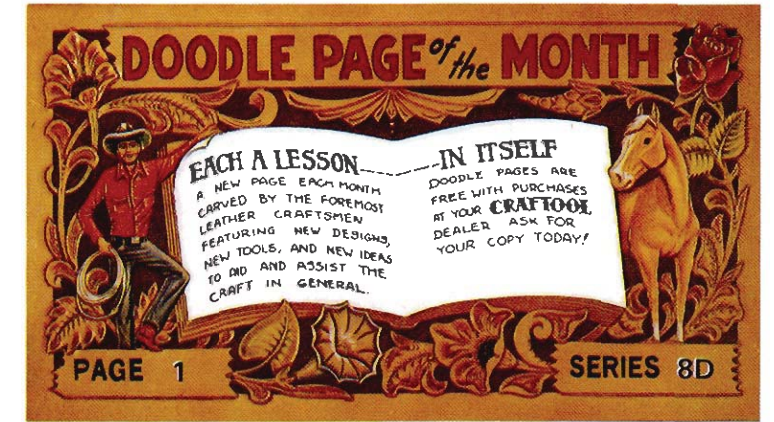
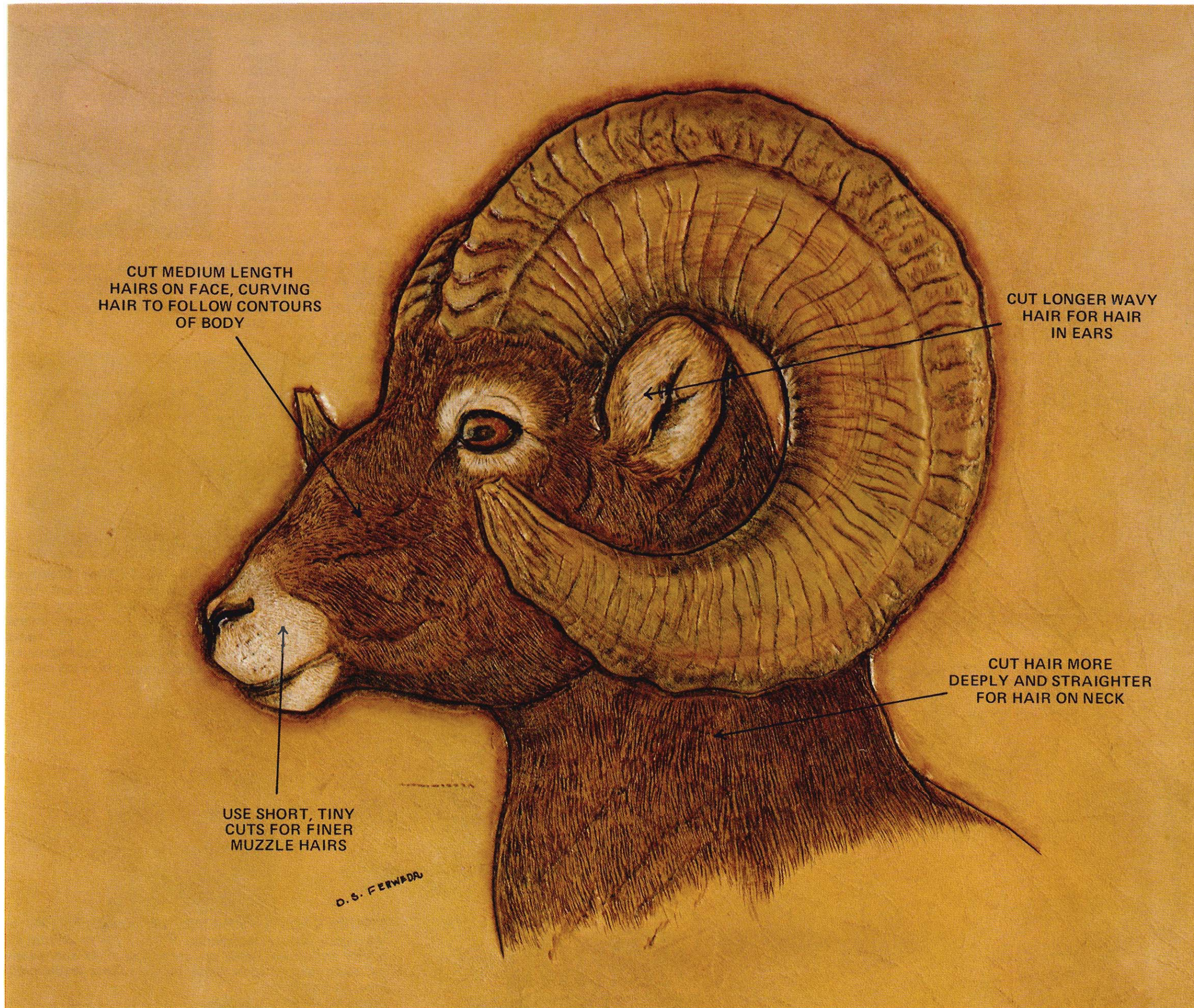
Front – full sized, front – tiled, back – full sized, back – tiled

(Some Doodle Pages do not have backs)

Please note: When printing on a home printer, the edges may get cut off. To avoid this, make sure “Page Scaling” is set to “Shrink to Printable Area” in the Adobe Reader print dialogue box. This will decrease the size of the Doodle Page a very small amount.



You may take this PDF file to your local print shop to have the full-size pages printed for your own personal use.



DOING HAIR WITH A GLOVER'S NEEDLE  
by  
D. Somerfield Ferweda

The next time you do an animal picture, try using a glover's needle to fill in the hair. Your picture will take on a much more realistic and artistic effect. It is also fun to do and will add new dimension to your leather art.

The glover's needle can be used as is, or it can be taped securely to the handle of an artist's brush and used as a pencil would be.

To determine an animal's hair patterns, you can look at the actual animal if available or study photographs, slides, taxidermy mounts or visit the local zoo, farm or ranch. Each animal within a species has somewhat different hair patterns just as humans do. Some hair on the same animal will be short and fine, others may be long and straight or wavy.

The example shown is a detail from a 2 X 3 foot painting of a sheep with the entire body hair filled in with a glover's needle. The sheep was first drawn on paper, sketching in the outline and body contours and indicating directions of hair to be cut with the needle. It was then transferred (Tandy tracing film works very well) to damp leather and worked as you would a regular animal painting, with carving and embossing.

The hairs were cut in rapidly, using the glover's needle as a miniature cutting knife. The leather should be slightly damp but not mushy. The hairs on the muzzle were done with short, fine strokes, cut less deeply. The ear hairs were somewhat longer, curving and overlapping, while the facial hairs were of medium length following the body contours and accenting them. The neck hairs were straighter and cut more deeply for a coarser look. The needle strokes are done almost as if you were drawing with a pencil.

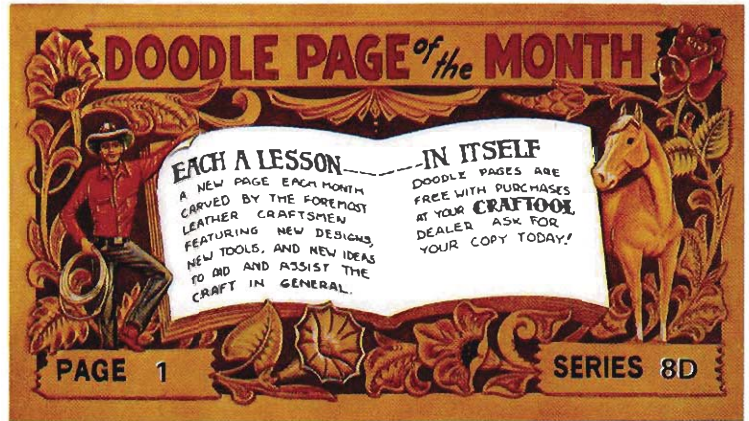
The spirit dye applied, sinks into the cuts and enhances them. Cova Dye (acrylic) works well for the white, but be sure to wipe the brush quite dry before applying so excess paint won't fill the hair lines. A final application of Neat-Lac not only protects the painting

CUT MEDIUM LENGTH  
HAIRS ON FACE, CURVING  
HAIR TO FOLLOW CONTOURS  
OF BODY



USE SHORT, TINY  
CUTS FOR FINER  
MUZZLE HAIRS

D. S. FERWEDA



## DOING HAIR WITH A GLOVER'S NEEDLE

by

D. Somerfield Ferweda

The next time you do an animal picture, try using a glover's needle to fill in the hair. Your picture will take on a much more realistic and artistic effect. It is also fun to do and will add new dimension to your leather art.

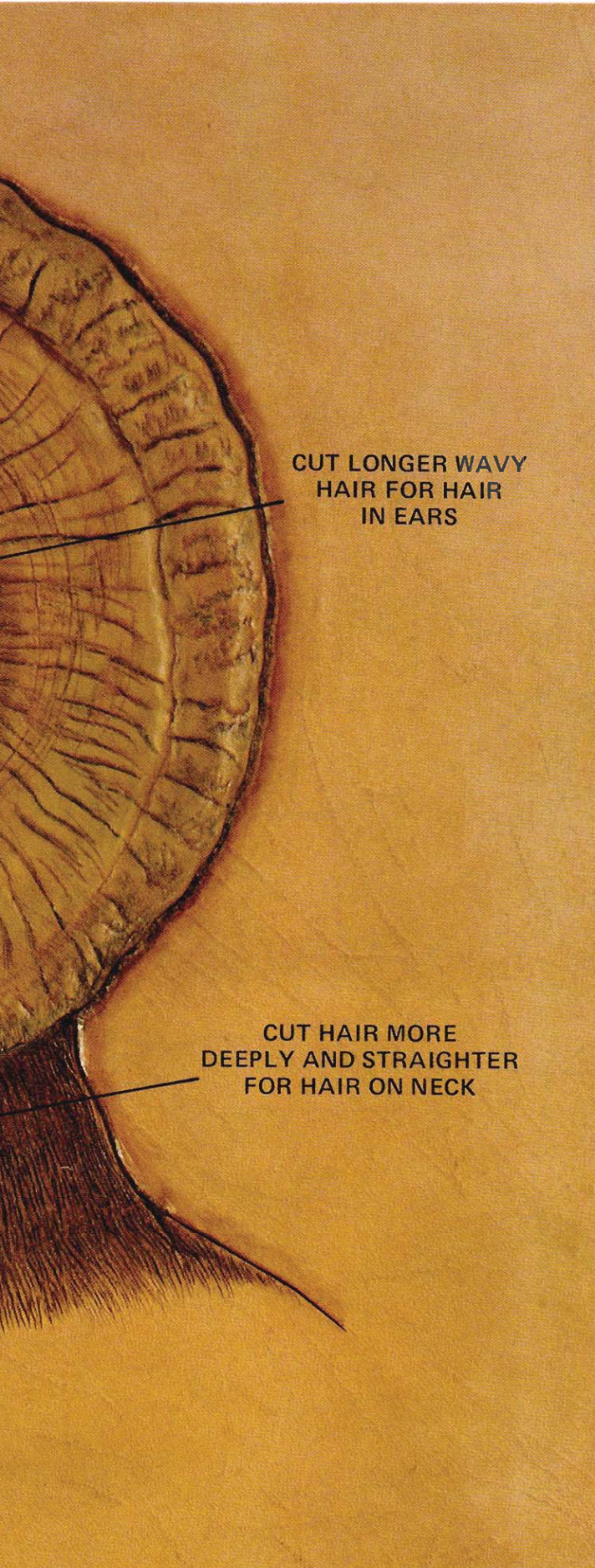
The glover's needle can be used as is, or it can be taped securely to the handle of an artist's brush and used as a pencil would be.

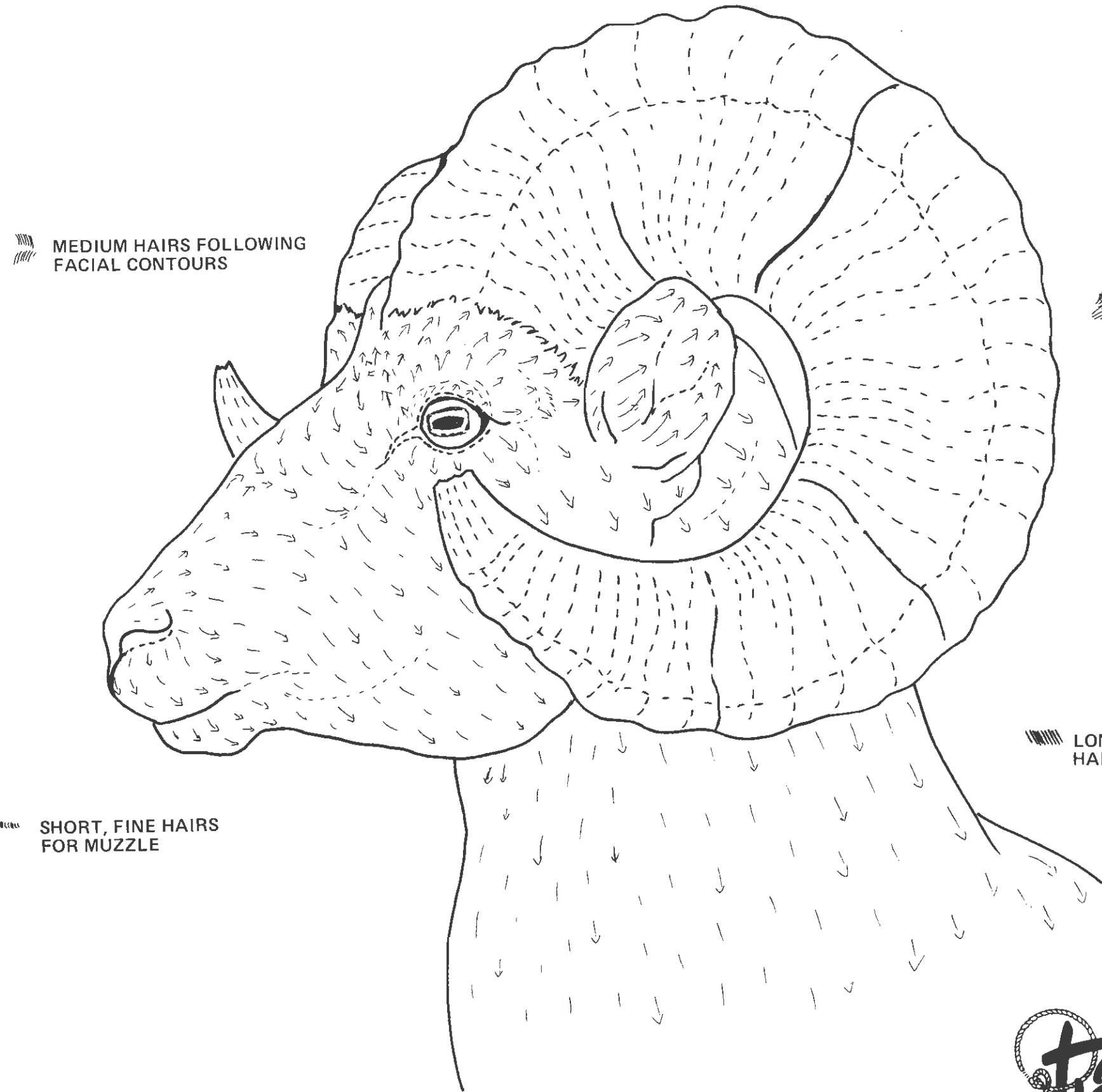
To determine an animal's hair patterns, you can look at the actual animal if available or study photographs, slides, taxidermy mounts or visit the local zoo, farm or ranch. Each animal within a species has somewhat different hair patterns just as humans do. Some hair on the same animal will be short and fine, others may be long and straight or wavy.

The example shown is a detail from a 2 X 3 foot painting of a sheep with the entire body hair filled in with a glover's needle. The sheep was first drawn on paper, sketching in the outline and body contours and indicating directions of hair to be cut with the needle. It was then transferred (Tandy tracing film works very well) to damp leather and worked as you would a regular animal painting, with carving and embossing.

The hairs were cut in rapidly, using the glover's needle as a miniature cutting knife. The leather should be slightly damp but not mushy. The hairs on the muzzle were done with short, fine strokes, cut less deeply. The ear hairs were somewhat longer, curving and overlapping, while the facial hairs were of medium length following the body contours and accenting them. The neck hairs were straighter and cut more deeply for a coarser look. The needle strokes are done almost as if you were drawing with a pencil.

The spirit dye applied, sinks into the cuts and enhances them. Cova Dye (acrylic) works well for the white, but be sure to wipe the brush quite dry before applying so excess paint won't fill the hair lines. A final application of Neat-Lac not only protects the painting





 MEDIUM HAIRS FOLLOWING FACIAL CONTOURS

 LONGER, MORE CURVING FOR INSIDE EARS

 LONGER, COARSER HAIR FOR NECK

 SHORT, FINE HAIRS FOR MUZZLE

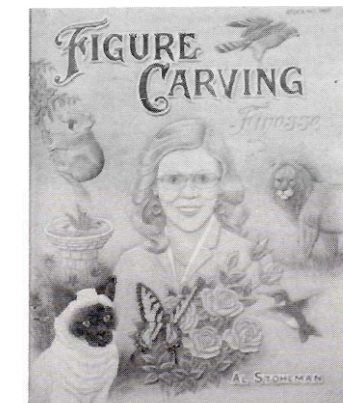


but brings out the cuts. You now have a piece of art that is distinctly you as an individual.

*Doris Ferweda is an artist living in Rapid City, South Dakota. In 1972, with a desire to explore new media, she began working with leather in bas relief carvings which evolved into three dimensional sculpture. She has won several Tandy International Leather Art contests including top winner in the bicentennial. She has had numerous one person shows, has shown at the C. M. Russell Art Auction, has been featured artist three times at the Governor's Inaugural Ball, and has works on display at Sylvan Lake Lodge, the State Capitol, and at Wall Drug. Individual works are owned nationwide. In 1983, one of her sculptures was presented to the Premier of China.*



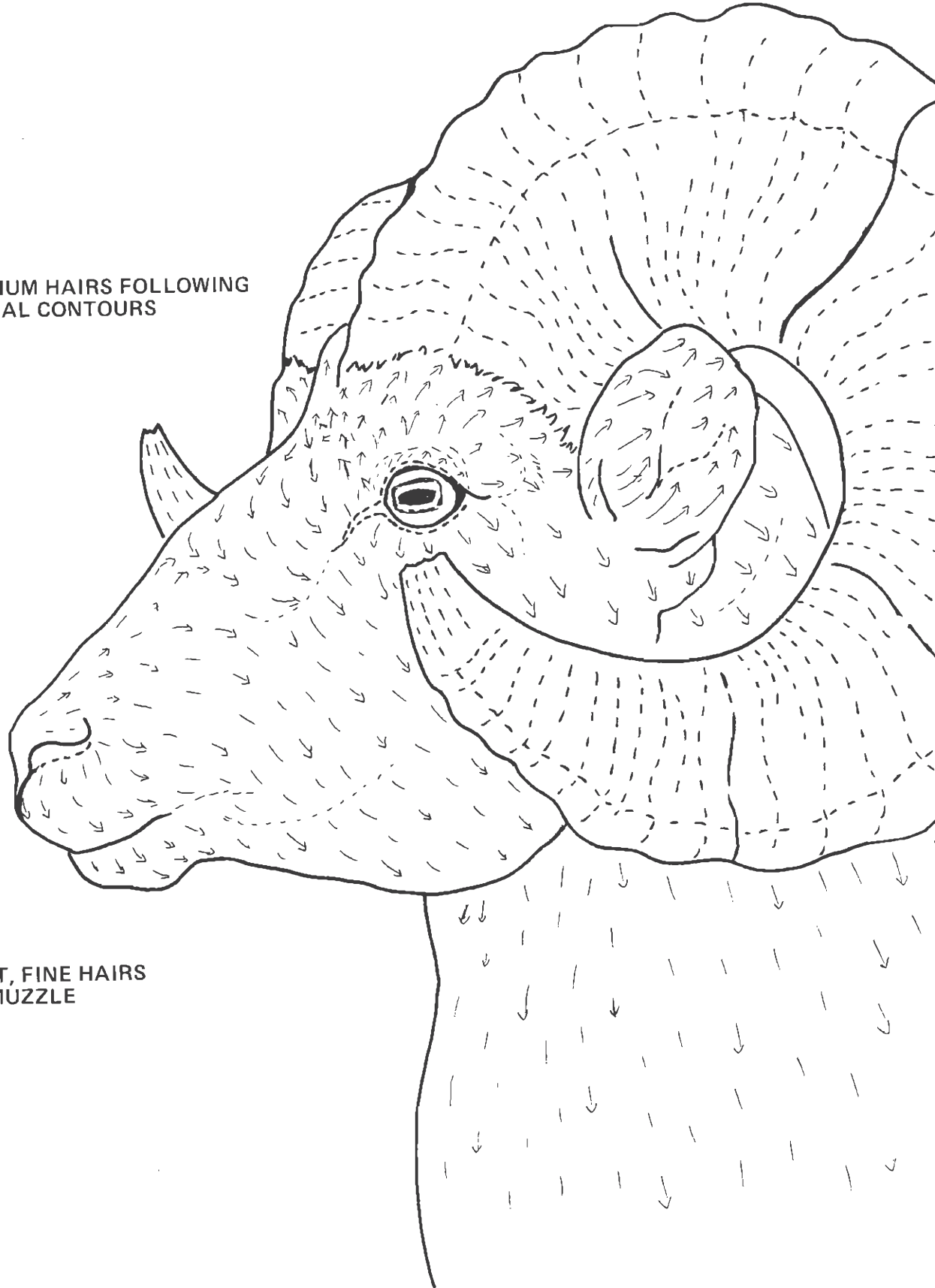
**AL STOHLMAN'S CLASSIC PATTERNS.** Stohlman's best Doodle Pages with patterns and instructions. Vol. I gives tips on embossing, figure carving, shadow boxing, filagree work. Vol. II shows how to tool plants, animals and wildlife scenes, including two big 21" X 24" scenes. Vol. III includes embossing and plugging techniques and scenes of summer, fall, winter, and spring, plus a lot more. Stock Nos. 1955, 1956, 1957.



**FIGURE CARVING FINESSE.** 132 pages of fully illustrated figure carving techniques. From Apes to Zebras, this is the definitive book on carving animals and people, including how to color them, by the master leathercraftsman, Al Stohlman. Stock No. 1951



MEDIUM HAIRS FOLLOWING  
FACIAL CONTOURS



SHORT, FINE HAIRS  
FOR MUZZLE

but brings out the cuts. You now have a piece of art that is distinctly you as an individual.

*Doris Ferweda is an artist living in Rapid City, South Dakota. In 1972, with a desire to explore new media, she began working with leather in bas relief carvings which evolved into three dimensional sculpture. She has won several Tandy International Leather Art contests including top winner in the bicentennial.*



*She has had numerous one person shows, has shown at the C. M. Russell Art Auction, has been featured artist three times at the Governor's Inaugural Ball, and has works on display at Sylvan Lake Lodge, the State Capitol, and at Wall Drug. Individual works are owned nationwide. In 1983, one of her sculptures was presented to the Premier of China.*

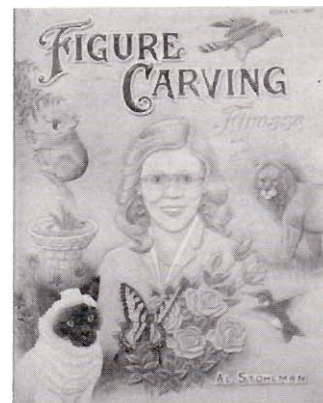


 LONGER, MORE CURVING FOR INSIDE EARS

 LONGER, COARSER HAIR FOR NECK



**AL STOHLMAN'S CLASSIC PATTERNS.** Stohlman's best Doodle Pages with patterns and instructions. Vol. I gives tips on embossing, figure carving, shadow boxing, filagree work. Vol. II shows how to tool plants, animals and wildlife scenes, including two big 21" X 24" scenes. Vol. III includes embossing and plugging techniques and scenes of summer, fall, winter, and spring, plus a lot more. Stock Nos. 1955, 1956, 1957.



**FIGURE CARVING FINESSE.** 132 pages of fully illustrated figure carving techniques. From Apes to Zebras, this is the definitive book on carving animals and people, including how to color them, by the master leathercraftsman, Al Stohlman. Stock No. 1951

