



## Doodle Page Digital Download

This PDF file contains 1 (one) Doodle Page. The PDF has been put together to give you options when it comes to printing. Pages and patterns that are larger than 8½x11 have been provided in two formats:



### 1) Full Size

If you would like to have a full size print out, take the full size pages to your local print shop and they can print it for you. All full size Doodle Pages are 11x17



### 2) Tiled

The tiled pages give you the option of printing the full sized Doodle Pages at home. You print the tiled pages and then assemble them to make the larger patterns.

The Doodle Page PDF files are typically laid out like this:

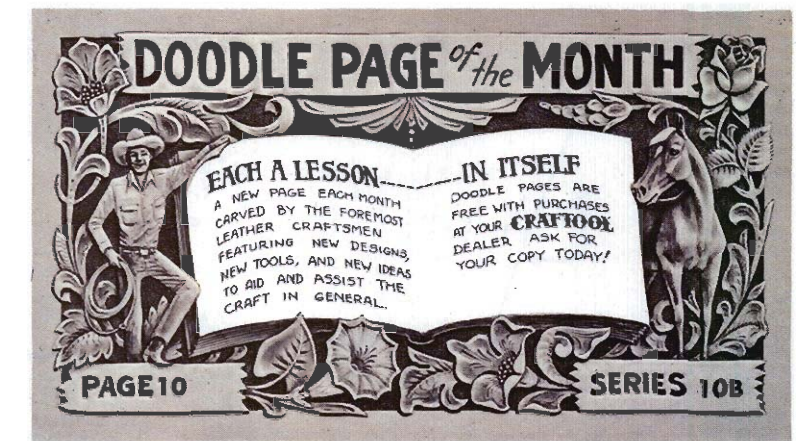
Front – full sized, front – tiled, back – full sized, back – tiled

(Some Doodle Pages do not have backs)

Please note: When printing on a home printer, the edges may get cut off. To avoid this, make sure “Page Scaling” is set to “Shrink to Printable Area” in the Adobe Reader print dialogue box. This will decrease the size of the Doodle Page a very small amount.



You may take this PDF file to your local print shop to have the full-size pages printed for your own personal use.



## "DINNERTIME" by Dick Bloomquist

Before we begin, let me make a suggestion to those of you who are starting on your first attempt at figure carving. By all means, I consider Al Stohlman's book on "Pictorial Carving" to be a prerequisite. Also, for color work is his book "How to Color Leather". Nuff said, now down to fun.

As always, start with the foremost objects first — the fawn, doe, and the mountain horizon. For this, use F-890, F-891, F-896, F-897 and F-902 for small areas. (I deepened some of these areas with B-803, B-701 and B-936). This is not necessary, I just like the texture.

Next comes the clouds. Use F-900 for the sky, F-898 and F-899 for the cloud formations. Below, on the mountain slopes, use F-896. Now for the fawn and doe, F-895 and F-896 will get most of your contours. F-890 and F-902 for the hard-to-get areas. Finish contouring with your No. 3 modeling spoon. Also, the eyes can be done with this spoon.

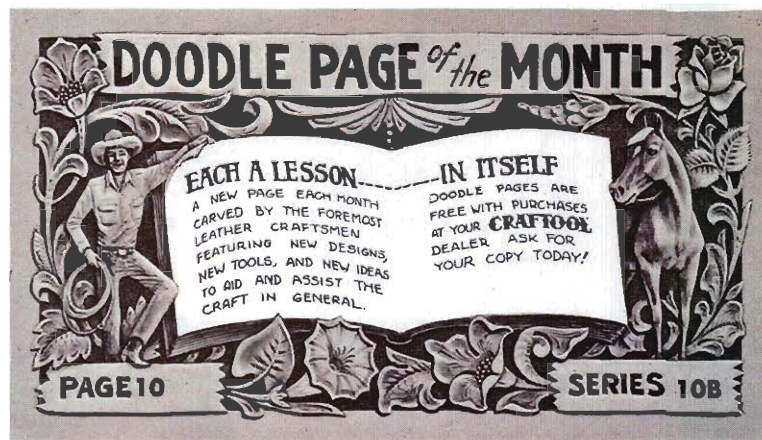
The small, thin long places in the log posed somewhat of a problem, but I licked it with my trusty ole' "902", in conjunction with B-936 for a textured look. The knot is made with S-628.

I worked on the firs at left next, using F-915. Then, the foreground trees just below with F-933 and F-902. Notice that I have simulated small trunks and deepened that area to separate the trees from the grass, which I also used F-933 for, but with much lighter strokes of the mallet.

After making the grassline at the top, go to the bottom and start back up. Having completed this, you are now ready to bevel the "sand" under the animals. This is done with F-896. Next, blend the grass gradually to the sand. Use the same method on the right side.

The large leaves at the bottom right are next. I gave them a little texture using F-701, finishing with F-902. Notice that I undercut and raised some of these areas with a deerfoot modeler. Next, bevel the limbs above





## "DINNERTIME"

by

**Dick Bloomquist**

Before we begin, let me make a suggestion to those of you who are starting on your first attempt at figure carving. By all means, I consider Al Stohlman's book on "Pictorial Carving" to be a prerequisite. Also, for color work is his book "How to Color Leather". Nuff said, now down to fun.

As always, start with the foremost objects first — the fawn, doe, and the mountain horizon. For this, use F-890, F-891, F-896, F-897 and F-902 for small areas. (I deepened some of these areas with B-803, B-701 and B-936). This is not necessary, I just like the texture.

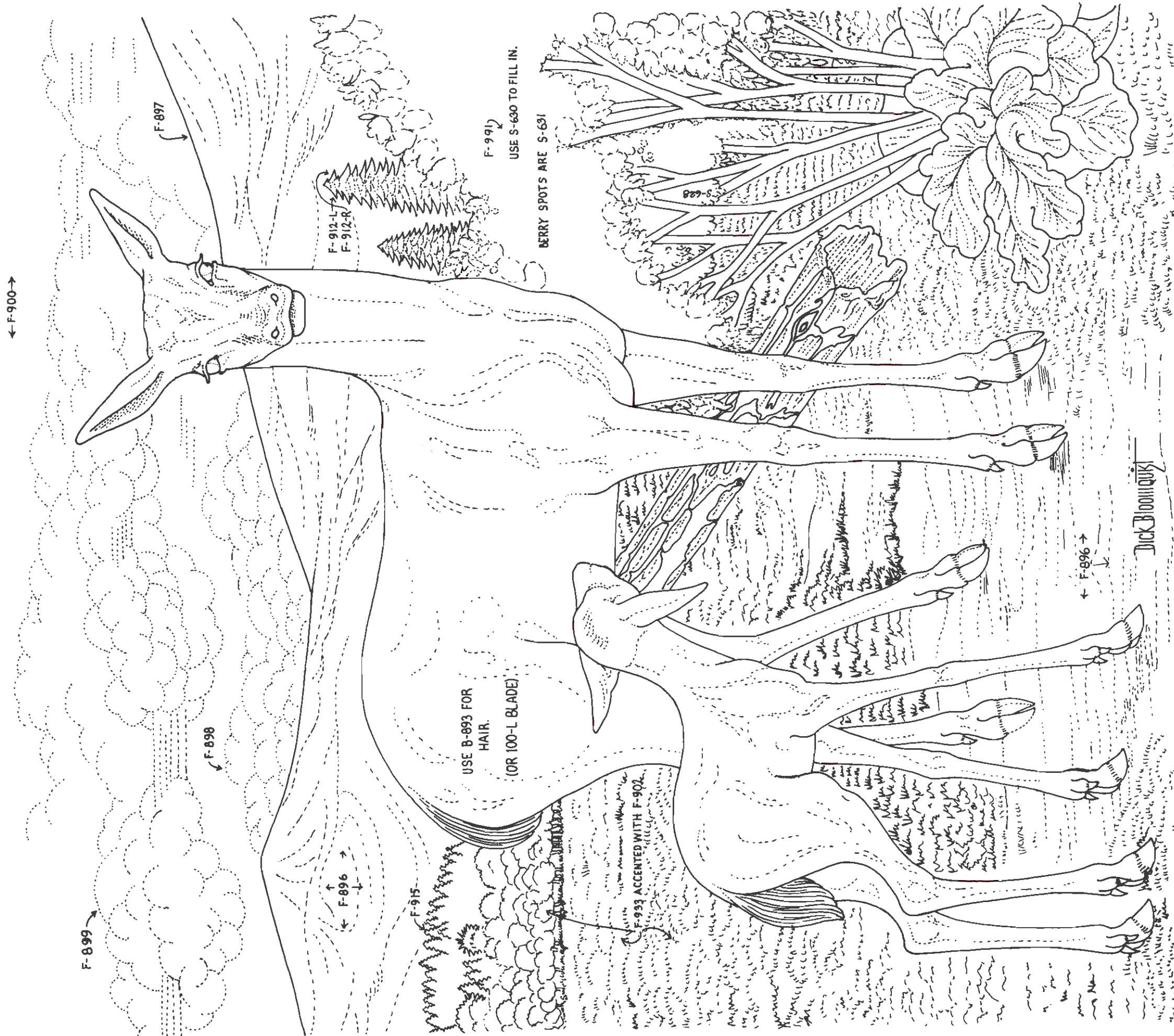
Next comes the clouds. Use F-900 for the sky, F-898 and F-899 for the cloud formations. Below, on the mountain slopes, use F-896. Now for the fawn and doe, F-895 and F-896 will get most of your contours. F-890 and F-902 for the hard-to-get areas. Finish contouring with your No. 3 modeling spoon. Also, the eyes can be done with this spoon.

The small, thin long places in the log posed somewhat of a problem, but I licked it with my trusty ole' "902", in conjunction with B-936 for a textured look. The knot is made with S-628.

I worked on the firs at left next, using F-915. Then, the foreground trees just below with F-933 and F-902. Notice that I have simulated small trunks and deepened that area to separate the trees from the grass, which I also used F-933 for, but with much lighter strokes of the mallet.

After making the grassline at the top, go to the bottom and start back up. Having completed this, you are now ready to bevel the "sand" under the animals. This is done with F-896. Next, blend the grass gradually to the sand. Use the same method on the right side.

The large leaves at the bottom right are next. I gave them a little texture using F-701, finishing with F-902. Notice that I undercut and raised some of these areas with a deerfoot modeler. Next, bevel the limbs above

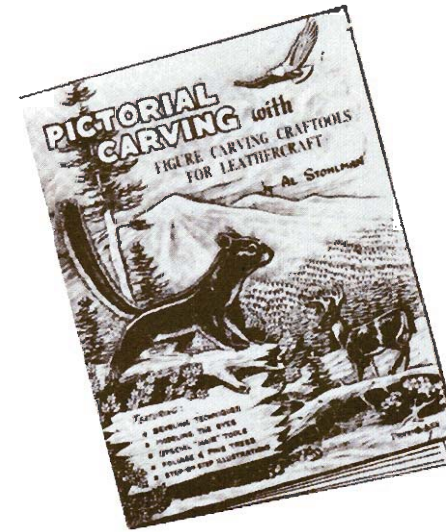


with B-205 and F-902 in the tight places, before finishing the grass in back.

Page 14 in Al's "Pictorial Carving" (again) will give you the secret to the maze of leaves. I started with F-991 and filled in with S-630. To top it off, any spot I couldn't get with F-902 or F-890, I used S-631 and presto, a berry tree (sometimes I cheat too.) The firs above this are done with F-912-L and F-912-R. Once again I refer you to "Pictorial Carving", page 11. Last but not least, comes the hair. I used B-893 and "brushed" it on, but your swivel knife with the 100-L blade will do just as well.

Now. Think you're through? Go back and search for those little "missed-spots" your friends are sure to find. You might also want to accentuate and deepen the shadows with light brown dye.

Have fun and until next time, keep on toolin'.



## PICTORIAL CARVINGS

Only \$1.00 each

Book gives easy step-by-step instructions on use of basic figure carving tools. Shows how to carve animals, birds, flowers, scenery, technique for using Crafttools to achieve the effect of hair on your animals. Even a beginner can learn quickly how to do figure carving with this book. By Al Stohlman. 16 pgs. 8½" x 11".

6037 PICTORIAL CARVING . . . \$1.00 ea.

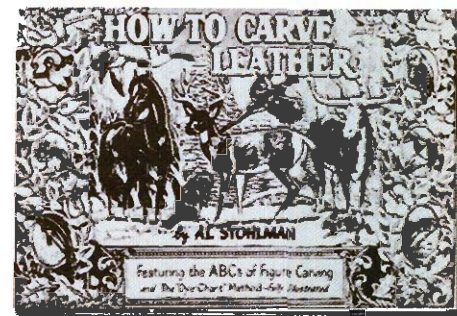


## FIGURE CARVING

only \$2.00 each

Al Stohlman tells you exactly what tools to use and how to use them. Dyeing fully explained. Patterns for belts, billfolds, key cases, etc. included. Shows you how to carve fish, horses, birds, many other animals. 32 pages, 13 different chapters. Order your copy today.

6049 Figure Carving . . . . . \$2.00 ea.



HOW TO CARVE LEATHER— by Al Stohlman. 48 big 18½" x 12½" pgs. How to assemble 11 projects. 30 illus. dye charts, 40 interchangeable Photocarve patterns, 6 complete alphabets (½" to 1½" letters).

6047 . . . . . \$3.50 ea.

← F-900 →

F-899

F-898

F-897

F-912-L  
F-912-R

← F-896 →

F-915

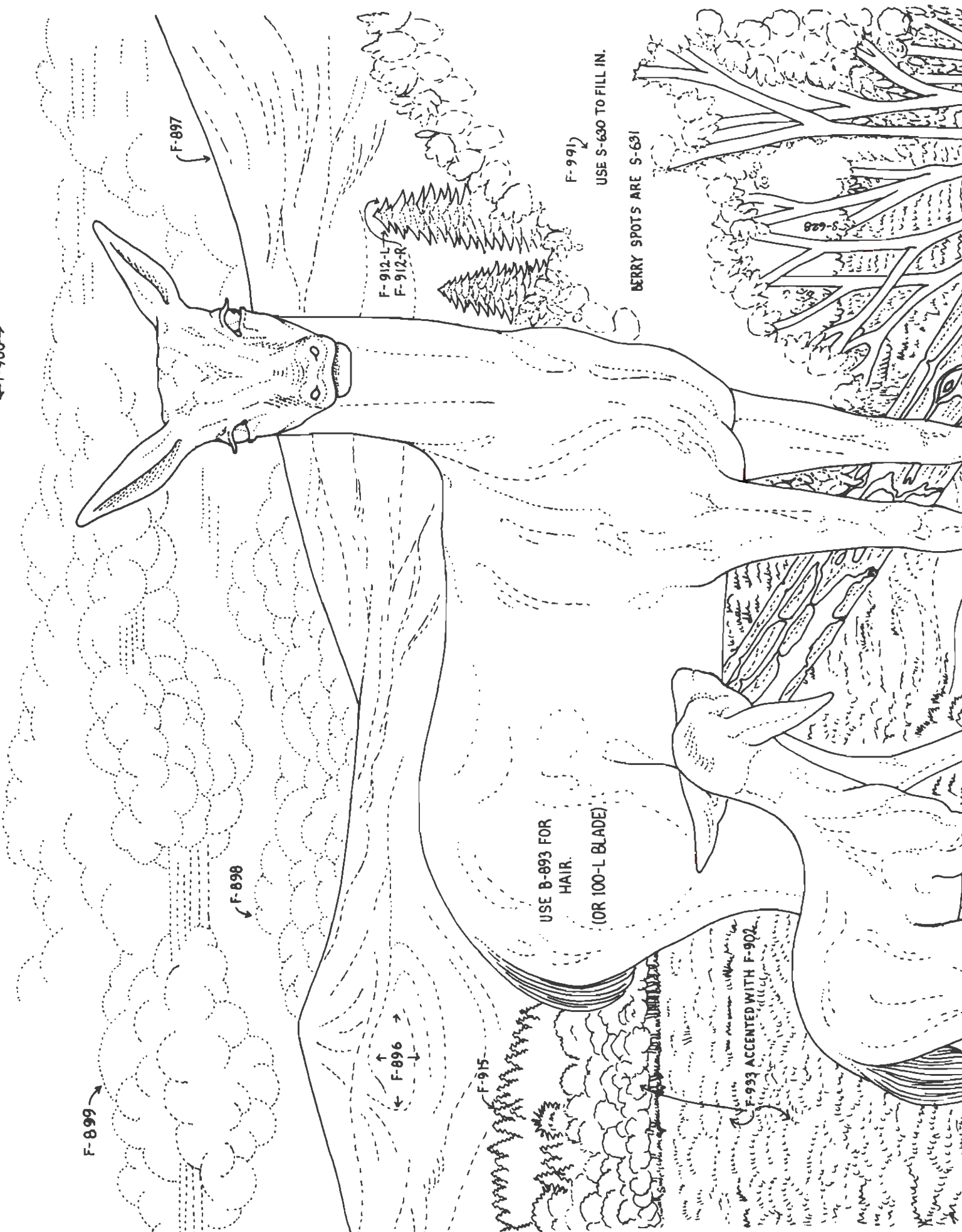
USE B-893 FOR  
HAIR.  
(OR 100-L BLADE)

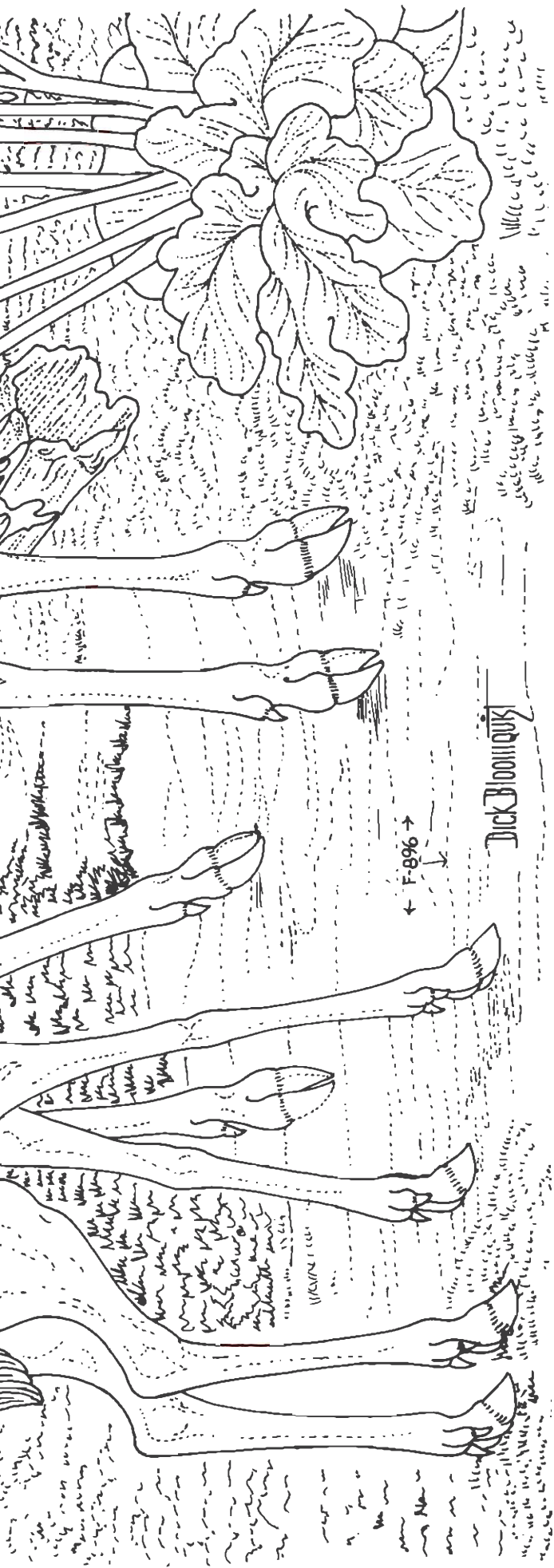
F-991

USE S-630 TO FILL IN.

BERRY SPOTS ARE S-691

F-933 ACCENTED WITH F-902



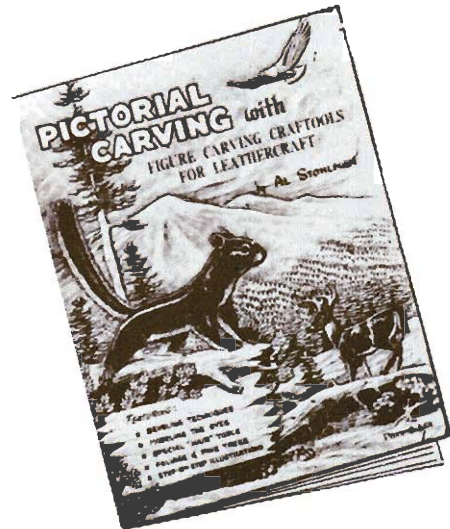


with B-205 and F-902 in the tight places, before finishing the grass in back.

Page 14 in Al's "Pictorial Carving" (again) will give you the secret to the maze of leaves. I started with F-991 and filled in with S-630. To top it off, any spot I couldn't get with F-902 or F-890, I used S-631 and presto, a berry tree (sometimes I cheat too.) The firs above this are done with F-912-L and F-912-R. Once again I refer you to "Pictorial Carving", page 11. Last but not least, comes the hair. I used B-893 and "brushed" it on, but your swivel knife with the 100-L blade will do just as well.

Now. Think you're through? Go back and search for those little "missed-spots" your friends are sure to find. You might also want to accentuate and deepen the shadows with light brown dye.

Have fun and until next time, keep on toolin'.



## PICTORIAL CARVINGS

Only \$1<sup>00</sup> each

Book gives easy step-by-step instructions on use of basic figure carving tools. Shows how to carve animals, birds, flowers, scenery, technique for using Crafttools to achieve the effect of hair on your animals. Even a beginner can learn quickly how to do figure carving with this book. By Al Stohlman. 16 pgs. 8½" x 11".  
6037 PICTORIAL CARVING ... \$1.00 ea.



## FIGURE CARVING

only \$2<sup>00</sup> each

Al Stohlman tells you exactly what tools to use and how to use them. Dyeing fully explained. Patterns for belts, billfolds, key cases, etc. included. Shows you how to carve fish, horses, birds, many other animals. 32 pages, 13 different chapters. Order your copy today.  
6049 Figure Carving ..... \$2.00 ea.



HOW TO CARVE LEATHER— by Al Stohlman. 48 big 18½" x 12½" pgs. How to assemble 11 projects. 30 illus. dye charts, 40 interchangeable Photocarve patterns, 6 complete alphabets (½" to 1½" letters).  
6047 ..... \$3.50 ea.