



Doodle Page Digital Download

This PDF file contains 1 (one) Doodle Page. The PDF has been put together to give you options when it comes to printing. Pages and patterns that are larger than 8½x11 have been provided in two formats:



1) Full Size

If you would like to have a full size print out, take the full size pages to your local print shop and they can print it for you. All full size Doodle Pages are 11x17



2) Tiled

The tiled pages give you the option of printing the full sized Doodle Pages at home. You print the tiled pages and then assemble them to make the larger patterns.

The Doodle Page PDF files are typically laid out like this:

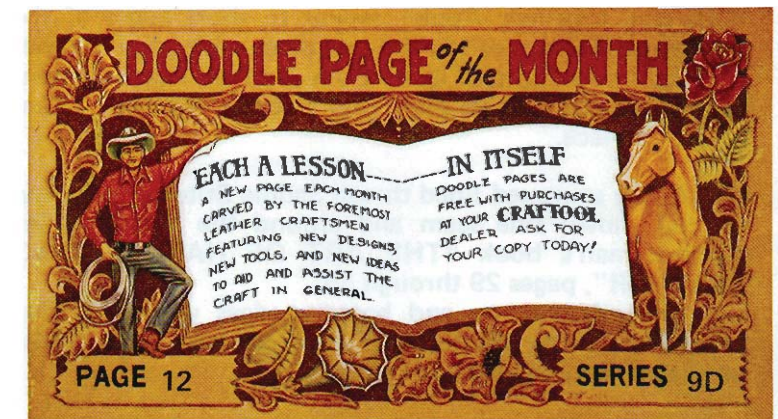
Front – full sized, front – tiled, back – full sized, back – tiled

(Some Doodle Pages do not have backs)

Please note: When printing on a home printer, the edges may get cut off. To avoid this, make sure “Page Scaling” is set to “Shrink to Printable Area” in the Adobe Reader print dialogue box. This will decrease the size of the Doodle Page a very small amount.



You may take this PDF file to your local print shop to have the full-size pages printed for your own personal use.



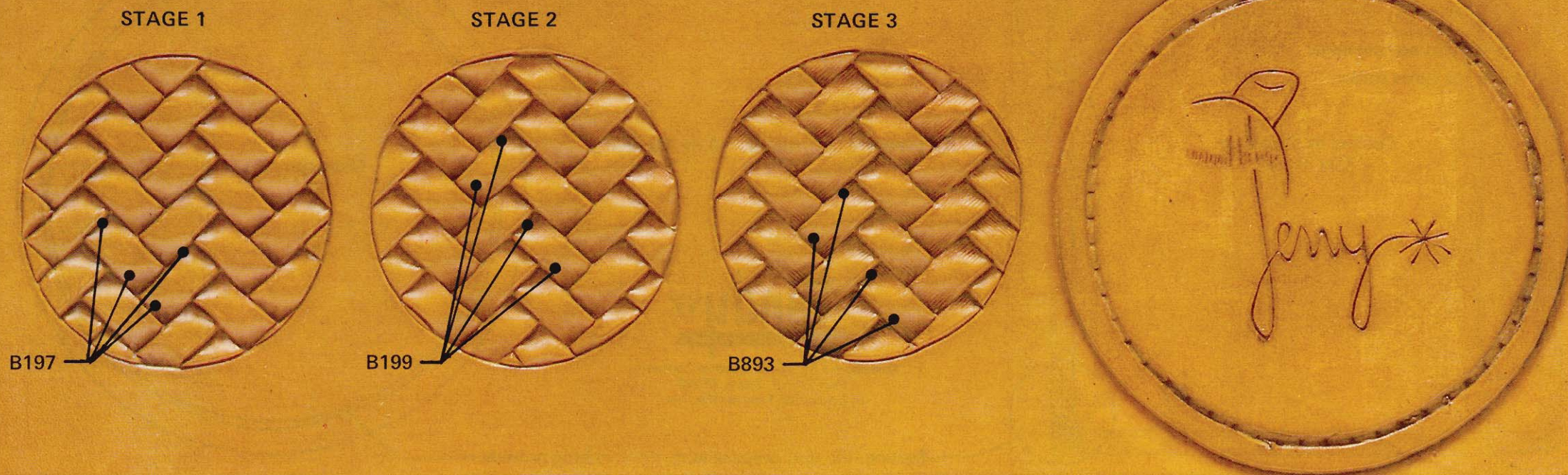
BASKETWEAVE DICE CUP by Gerald Poissonnier

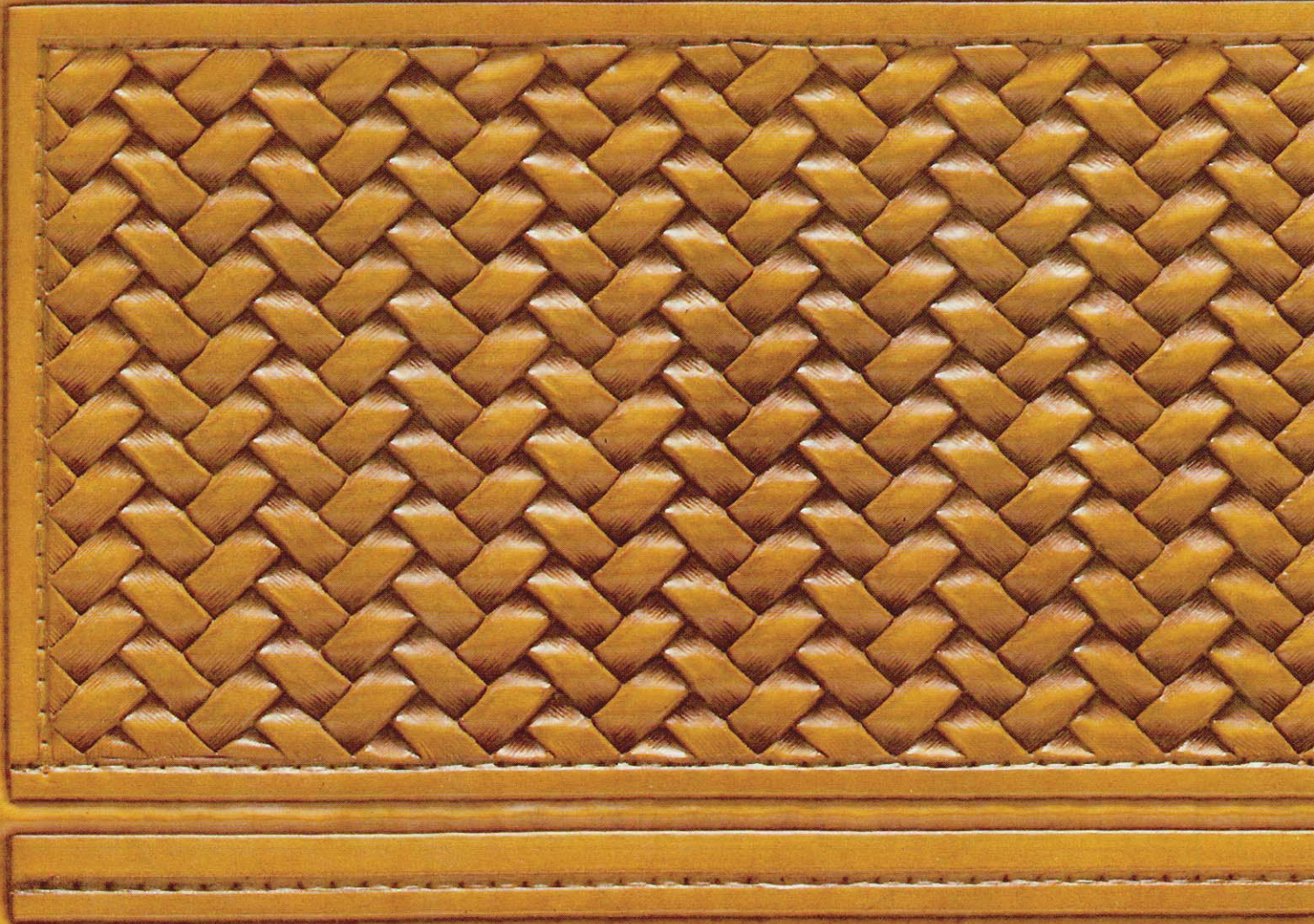
Trace off and cut out the three parts of the dice cup shown on the back of this sheet. Transfer the patterns to 9-10 oz. tooling leather. Using B197, B199, and B893, tool the basketweave pattern following the step-by-step carving at left. On this pattern it is important that you tool deeply. The harder you strike the tools, the deeper the impression; the deeper the impression, the more beautiful the carving. I like to think of it as sculpting the leather.

After all tooling is finished, use a No. 8074 Stitching Groover to gouge around all stitch lines shown on pattern, 1/4" inside the edges. Mark stitches by running a No. 8079-05 Overstitch Wheel down all stitch lines.

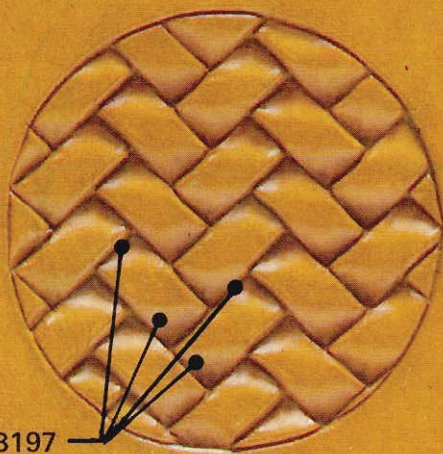
Skive the bottom edge of the side piece, on flesh side, at a 45° angle with a No. 8080 French Edge Skiver. Skive around the edges on flesh side of the bottom to match 45° angle on side piece.

Edge around bottom, around tip and bottom of side piece and along both long edges of top liner, all on grain side only, with a No. 8076-05 Edge Beveler.

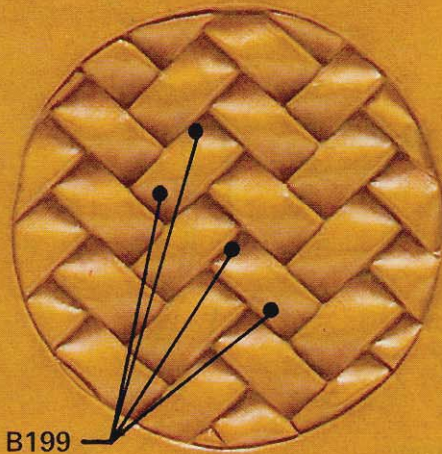




STAGE 1

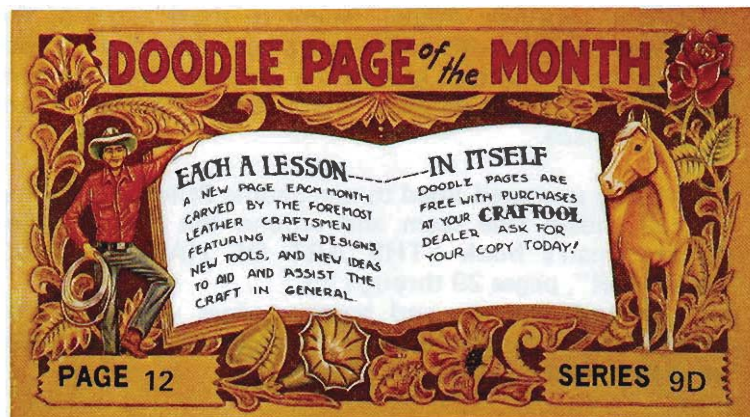


STAGE 2



STAGE 3





BASKETWEAVE DICE CUP by Gerald Poissonnier

Trace off and cut out the three parts of the dice cup shown on the back of this sheet. Transfer the patterns to 9-10 oz. tooling leather. Using B197, B199, and B893, tool the basketweave pattern following the step-by-step carving at left. On this pattern it is important that you tool deeply. The harder you strike the tools, the deeper the impression; the deeper the impression, the more beautiful the carving. I like to think of it as sculpting the leather.

After all tooling is finished, use a No. 8074 Stitching Groover to gouge around all stitch lines shown on pattern, 1/4" inside the edges. Mark stitches by running a No. 8079-05 Overstitch Wheel down all stitch lines.

Skive the bottom edge of the side piece, on flesh side, at a 45° angle with a No. 8080 French Edge Skiver. Skive around the edges on flesh side of the bottom to match 45° angle on side piece.

Edge around bottom, around tip and bottom of side piece and along both long edges of top liner, all on grain side only, with a No. 8076-05 Edge Beveler.



Cement the top lining to the edge of the side piece flesh side together. Apply cement to short edges of the side piece. Form a roll of the side piece with grain side out and short edges butted against one another. Apply cement to skived edges of side piece and bottom. Adhere bottom of cup in place.

Using unwaxed lined thread Saddle Stitch around top of cup, down side seam and around the bottom. (See Al Stohlman's book "THE ART OF HAND SEWING LEATHER", pages 29 through 35.

Smooth the top and bottom edges with very fine sandpaper. Then burnish the edges with a bone folder until they are rounded and uniform.

Stain your cup with Fiebings Antique Finish; I used tan. Apply it on all surfaces, even on the inside of the cup for a more finished look. Wipe off all excess antique. Apply dark brown Cova Dye to top and bottom edges. Allow to dry thoroughly.

As the final step, apply Leather Balm with Atom Wax to the whole cup, inside and out. Let it dry then buff the outside of the cup with a soft cloth for a mellow shine.

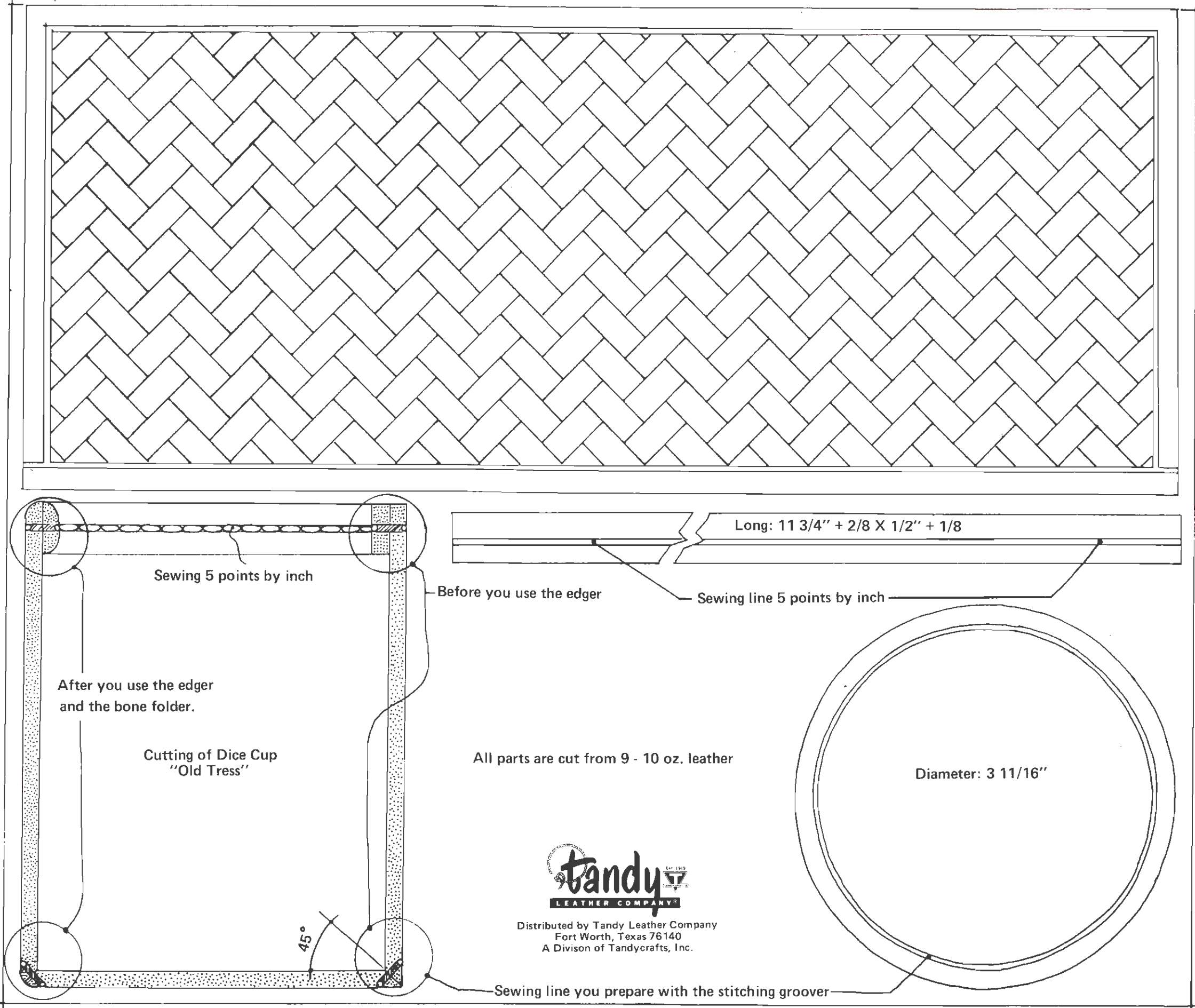
About The Artist

The Albuquerque Journal says Gerald Poissonnier was "born 41 years ago in Paris but lives 150 years ago in Albuquerque." This aptly describes the man. He considers himself an artist in old west leather. He arrived in this country about four years ago to pursue a dream. Jerry, you see, was one of those Old West buffs of Europe.

He may not have mastered English yet, but he is considered a master leather crafter in the museums and mansions of Europe. To French, German, California and Texas millionaire collectors of western leatherwork, Jerry Poissonnier is a legend.

Jerry owns his own leather shop, Ranchero Saddlery in Albuquerque, New Mexico. He spends most of his time there, which is why his English isn't improving as quickly as he would like, but he seems to have no trouble getting his point across.

"If the hobbyist, one lady or gentleman, who begins for the first time my project . . . if she or he does the good deep on the leather, that is my reward. I glad to help him, to understand the great art of sculpture on leather."



Cement the top lining to the edge of the side piece flesh side together. Apply cement to short edges of the side piece. Form a roll of the side piece with grain side out and short edges butted against one another. Apply cement to skived edges of side piece and bottom. Adhere bottom of cup in place.

Using unwaxed lined thread Saddle Stitch around top of cup, down side seam and around the bottom. (See Al Stohlman's book "THE ART OF HAND SEWING LEATHER", pages 29 through 35.

Smooth the top and bottom edges with very fine sandpaper. Then burnish the edges with a bone folder until they are rounded and uniform.

Stain your cup with Fiebings Antique Finish; I used tan. Apply it on all surfaces, even on the inside of the cup for a more finished look. Wipe off all excess antique. Apply dark brown Cova Dye to top and bottom edges. Allow to dry thoroughly.

As the final step, apply Leather Balm with Atom Wax to the whole cup, inside and out. Let it dry then buff the outside of the cup with a soft cloth for a mellow shine.

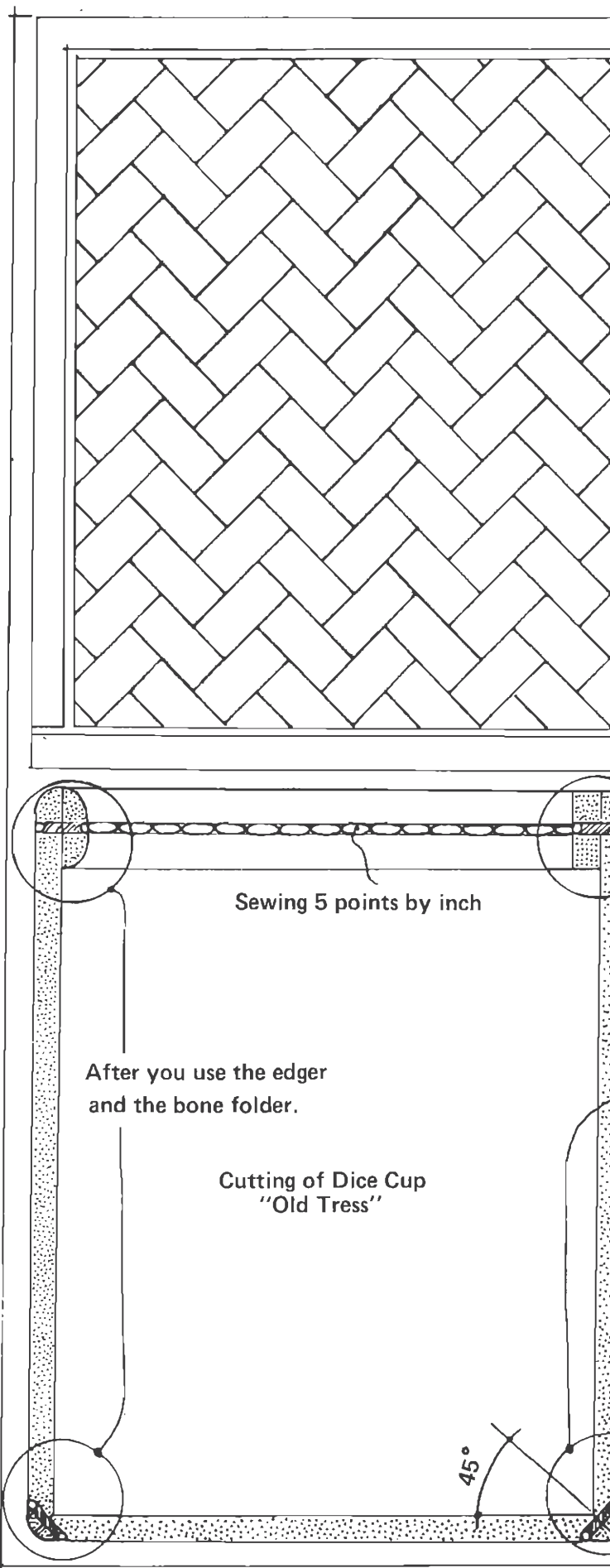
About The Artist

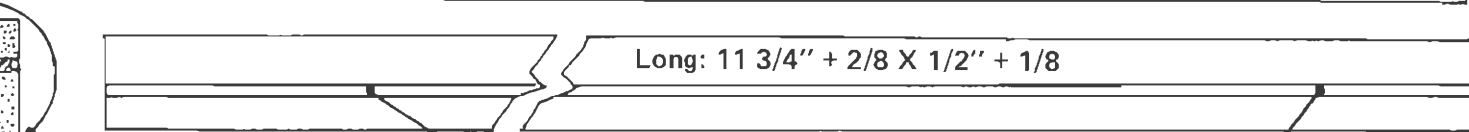
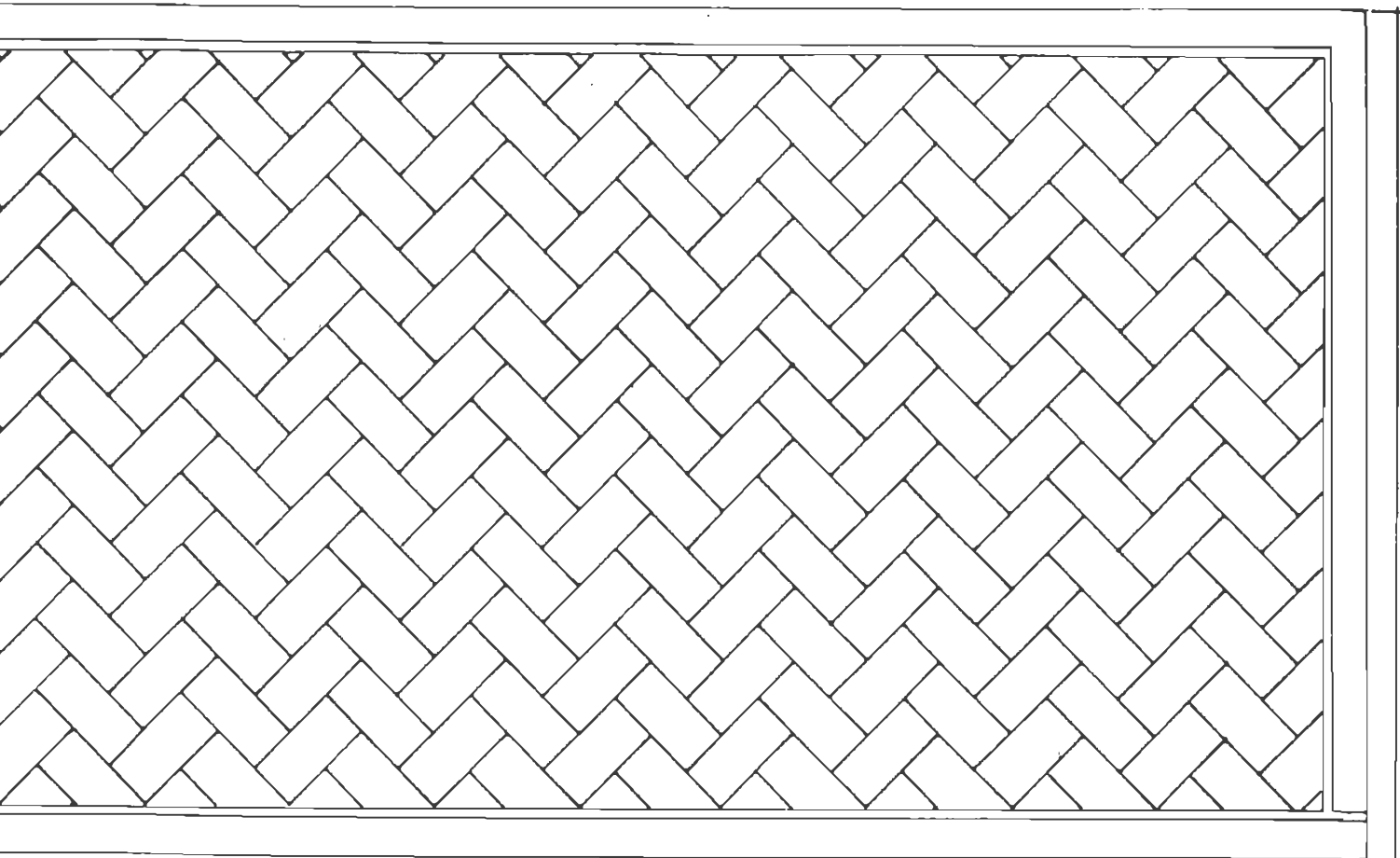
The Albuquerque Journal says Gerald Poissonnier was "born 41 years ago in Paris but lives 150 years ago in Albuquerque." This aptly describes the man. He considers himself an artist in old west leather. He arrived in this country about four years ago to pursue a dream. Jerry, you see, was one of those Old West buffs of Europe.

He may not have mastered English yet, but he is considered a master leather crafter in the museums and mansions of Europe. To French, German, California and Texas millionaire collectors of western leatherwork, Jerry Poissonnier is a legend.

Jerry owns his own leather shop, Ranchero Saddlery in Albuquerque, New Mexico. He spends most of his time there, which is why his English isn't improving as quickly as he would like, but he seems to have no trouble getting his point across.

"If the hobbyist, one lady or gentleman, who begins for the first time my project . . . if she or he does the good deep on the leather, that is my reward. I glad to help him, to understand the great art of sculpture on leather."





Long: $11 \frac{3}{4}'' + \frac{2}{8} \times \frac{1}{2}'' + \frac{1}{8}$

Before you use the edger

Sewing line 5 points by inch

All parts are cut from 9 - 10 oz. leather

Diameter: $3 \frac{11}{16}''$



Distributed by Tandy Leather Company
Fort Worth, Texas 76140
A Division of Tandycrafts, Inc.

Sewing line you prepare with the stitching groover