



Doodle Page Digital Download

This PDF file contains 1 (one) Doodle Page. The PDF has been put together to give you options when it comes to printing. Pages and patterns that are larger than 8½x11 have been provided in two formats:



1) Full Size

If you would like to have a full size print out, take the full size pages to your local print shop and they can print it for you. All full size Doodle Pages are 11x17



2) Tiled

The tiled pages give you the option of printing the full sized Doodle Pages at home. You print the tiled pages and then assemble them to make the larger patterns.

The Doodle Page PDF files are typically laid out like this:

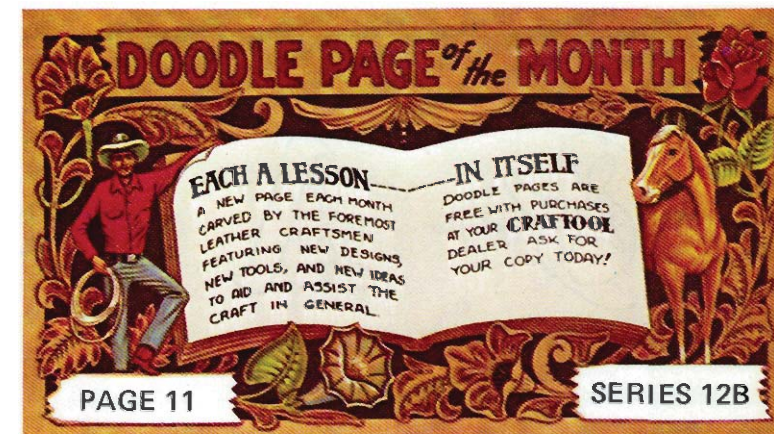
Front – full sized, front – tiled, back – full sized, back – tiled

(Some Doodle Pages do not have backs)

Please note: When printing on a home printer, the edges may get cut off. To avoid this, make sure “Page Scaling” is set to “Shrink to Printable Area” in the Adobe Reader print dialogue box. This will decrease the size of the Doodle Page a very small amount.



You may take this PDF file to your local print shop to have the full-size pages printed for your own personal use.



AN ARGO ALPHABET

by GENE NOLAND

Doing alphabets is an art all in it's own as there are thousands of different styles and types to choose from. To come up with a right one or combination of type faces to use on leather is a joy.


I hope to bring you more alphabet designs for the leather carver in future issues. Not my own designs of course when there are so many, but types that can be adopted for use on leather.

This particular type alphabet is the ARGO type style. As you can notice this alphabet may be colored or stylized in many different ways and I hope this lends to your own leather carving.

You can bevel these letters to look positive or tool them in the inverted design. However which every way you choose, I find that if you use a tapered 1/4" swivel knife blade, your cutting will be that much easier to control. Always cut on the outside of your design or the side that is to be beveled down.

(Continued on Reverse Side)

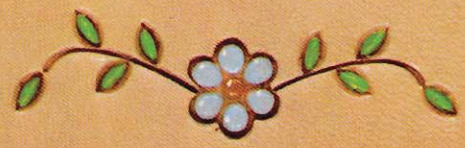


 & A B C D E

I J K L M N O

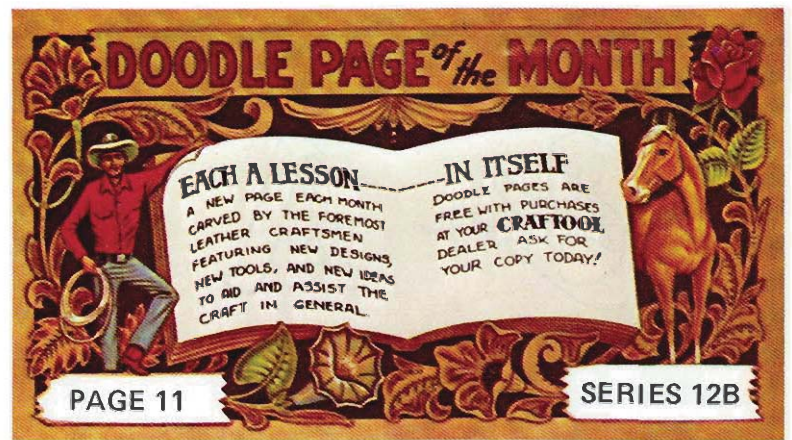
S T U V  X Y

1 2 3 4 5 6 7



a b c d e f g h i j

o p q r s t u v w



AN ARGO ALPHABET

by GENE NOLAND

Doing alphabets is an art all in it's own as there are thousands of different styles and types to choose from. To come up with a right one or combination of type faces to use on leather is a joy.

I hope to bring you more alphabet designs for the leather carver in future issues. Not my own designs of course when there are so many, but types that can be adopted for use on leather.

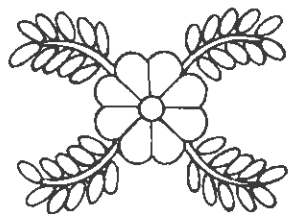
This particular type alphabet is the ARGO type style. As you can notice this alphabet may be colored or stylized in many different ways and I hope this lends to your own leather carving.

You can bevel these letters to look positive or tool them in the inverted design. However which every way you choose, I find that if you use a tapered 1/4" swivel knife blade, your cutting will be that much easier to control. Always cut on the outside of your design or the side that is to be beveled down.

(Continued on Reverse Side)

& A B C D E F G H

I J K L M N O P Q R

S T U V W X Y Z 

1 2 3 4 5 6 7 8 9 0

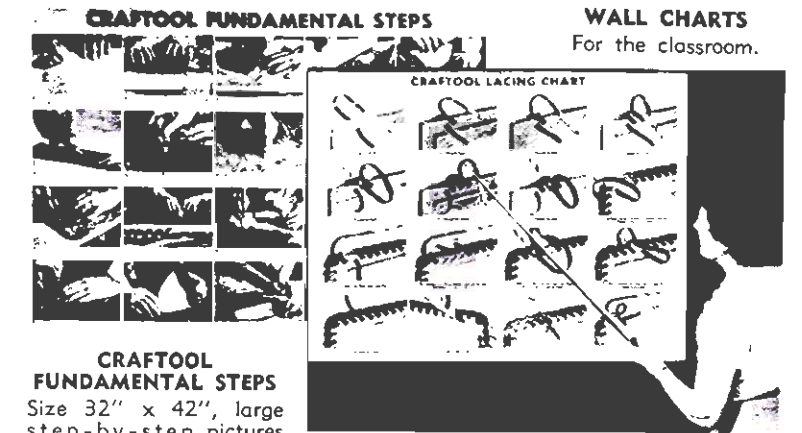
a b c d e f g h i j k l m n

o p q r s t u v w x y z

I was going to color more of the letters but decided they would not show up as well as the natural leather letters.

Again I hope you will be pleased with this alphabet as it was very easy to do.

GOOD LUCK.



CRAFTOOL FUNDAMENTAL STEPS
Size 32" x 42", large step-by-step pictures clearly illustrating procedure and use of tools.

WALL CHARTS
For the classroom.
CRAFTOOL LACING CHART
Size 35" x 45" just what the over-worked craft instructor needs.\$1.00



Ken Griffin's SCRAP BOOK
A jumbo size book of new designs and patterns. Pages 18" x 15" with full size tracings and Foto-Carve patterns. Leather carving made easy.\$5.00

& A B C D E

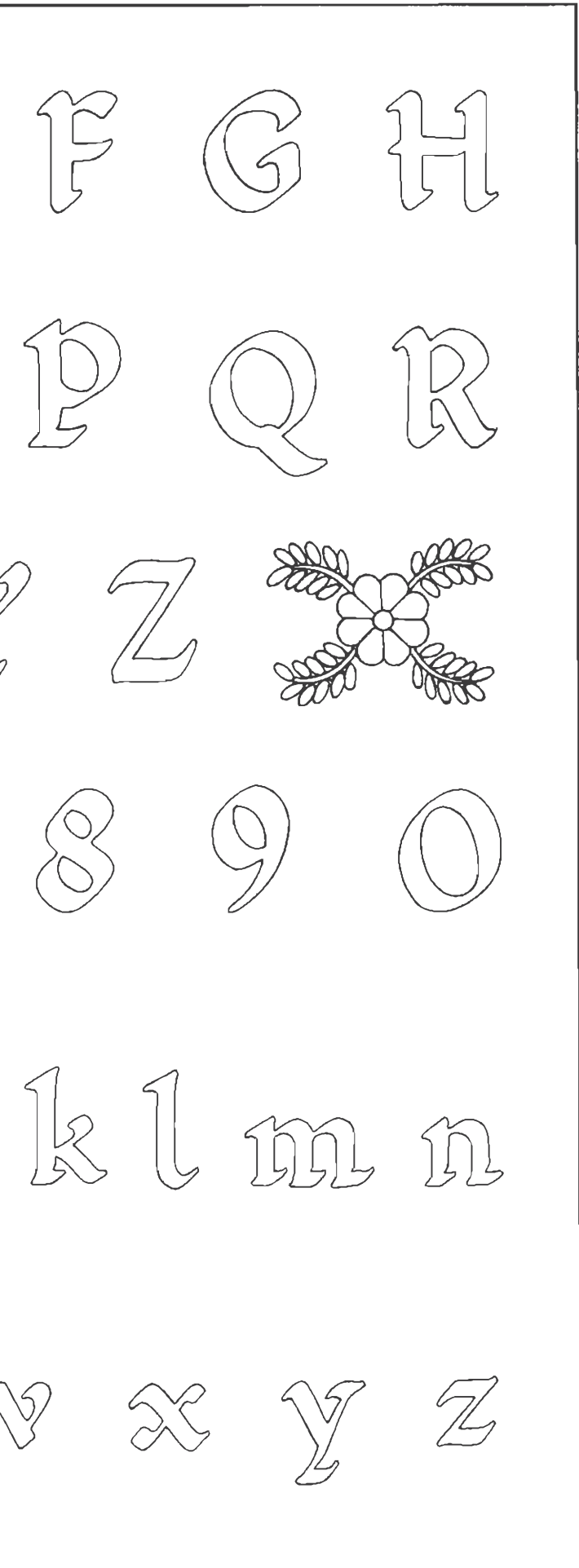
l j K L M N O

S T U V W X Y

1 2 3 4 5 6 7

a b c d e f g h i j

o p q r s t u v w



I was going to color more of the letters but decided they would not show up as well as the natural leather letters.

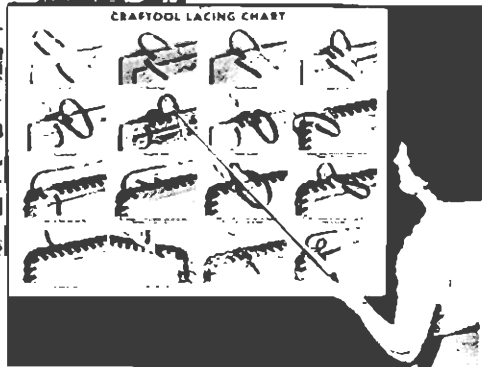
Again I hope you will be pleased with this alphabet as it was very easy to do.

GOOD LUCK.



CRAFTOOL FUNDAMENTAL STEPS
Size 32" x 42", large step-by-step pictures clearly illustrating procedure and use of tools.

WALL CHARTS
For the classroom.



CRAFTOOL LACING CHART
Size 35" x 45" just what the over-worked craft instructor needs.\$1.00



Ken Griffin's SCRAP BOOK
A jumbo size book of new designs and patterns. Pages 18" x 15" with full size tracings and Foto-Carve patterns. Leather carving made easy.\$5.00