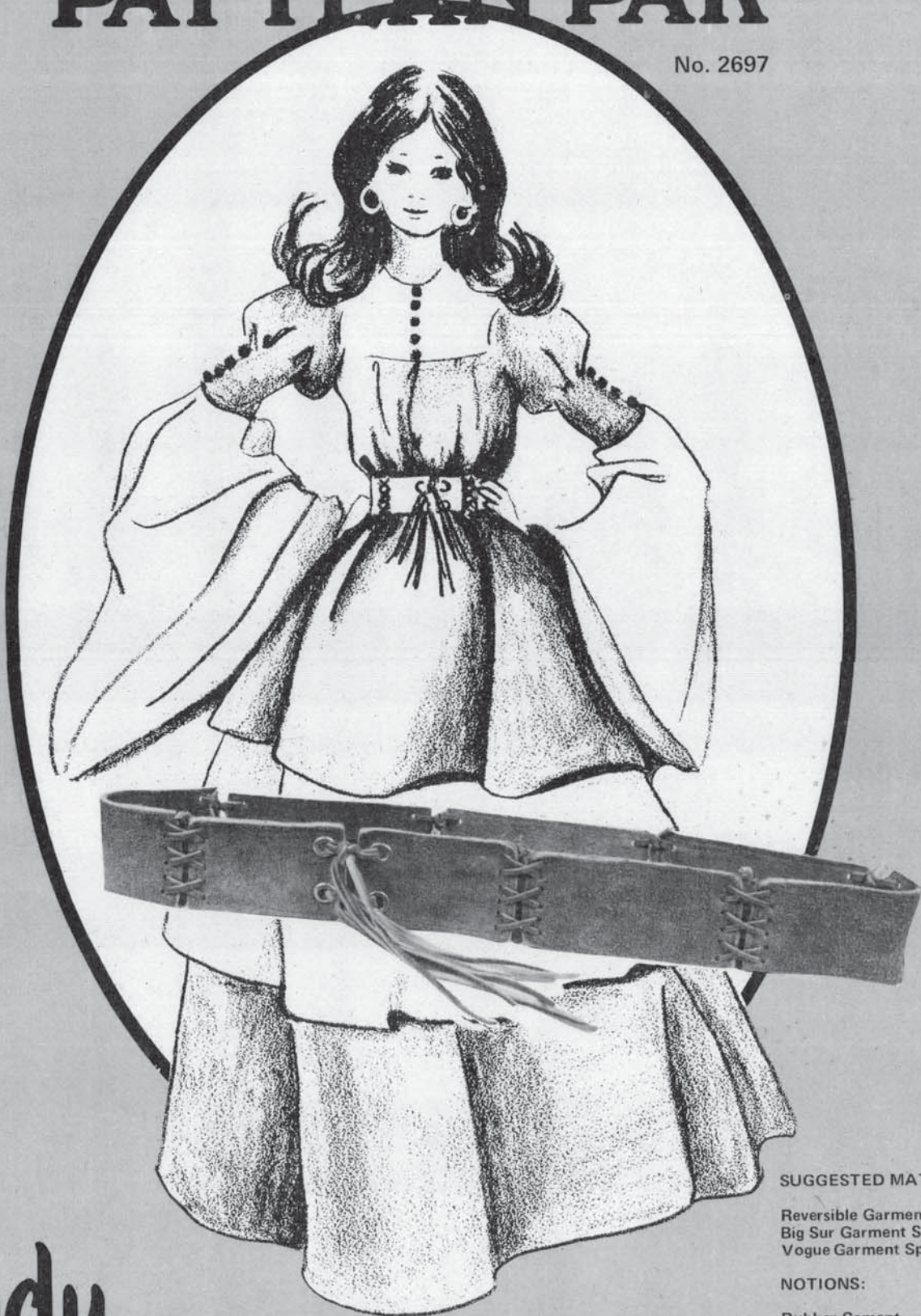


LEATHER ACCESSORIES

PATTERN PAK

No. 2697



SUGGESTED MATERIAL:

Reversible Garment Sides
Big Sur Garment Splits or,
Vogue Garment Splits

NOTIONS:

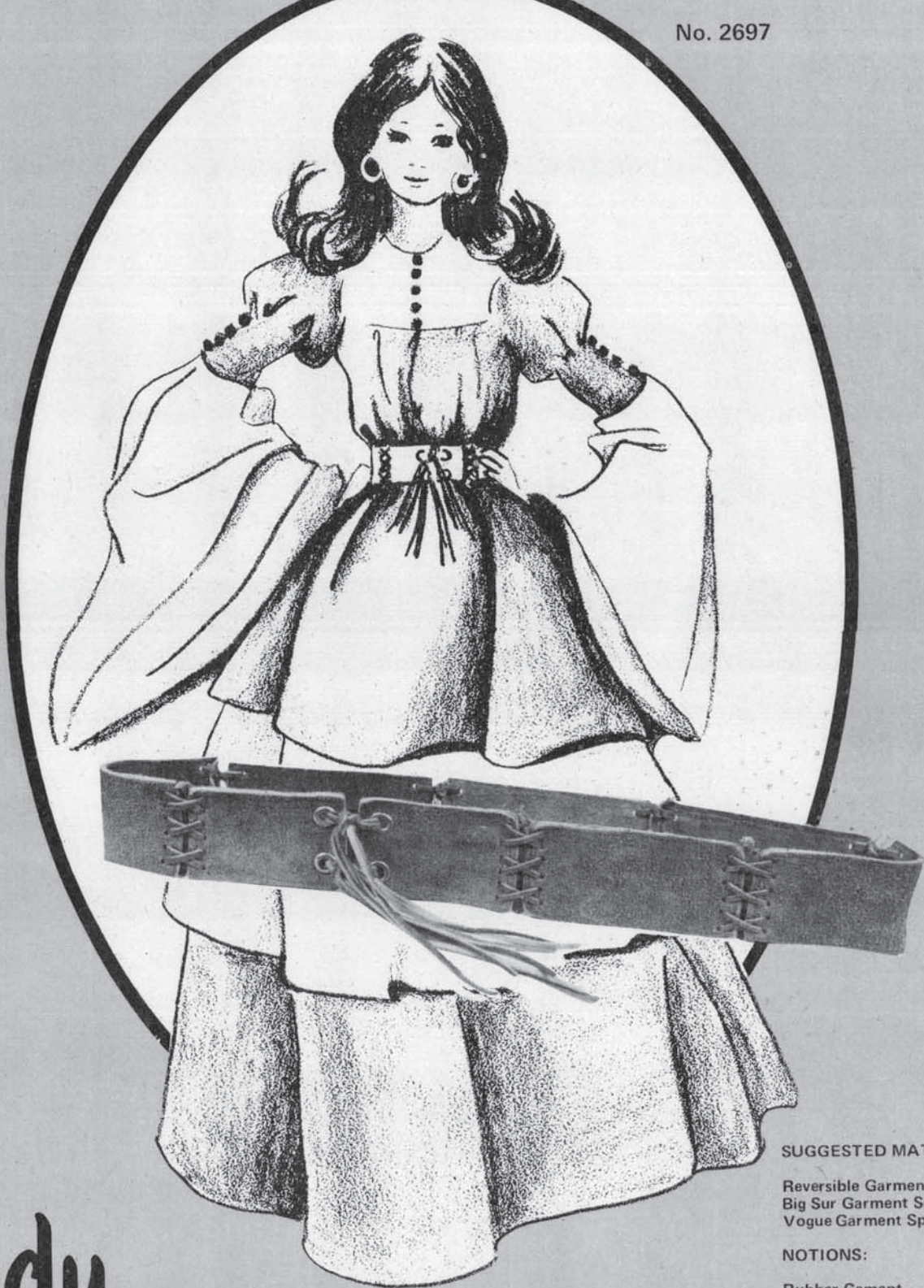
Rubber Cement
Cotton wrapped polyester thread
Leather Needle (Size 11)
No. 9 Drive Punch
No. 2 Drive Punch
4-AA Eyelets
Craftool Eyelet Setter - 7053

Tandy
LEATHER COMPANY
A TANDY CORPORATION COMPANY

Distributed by
Tandy Warehouse Co.
A Tandy Corporation Co.
Fort Worth, Texas

LEATHER ACCESSORIES PATTERN PAK

No. 2697



SUGGESTED MATERIAL:

Reversible Garment Sides
Big Sur Garment Splits or,
Vogue Garment Splits

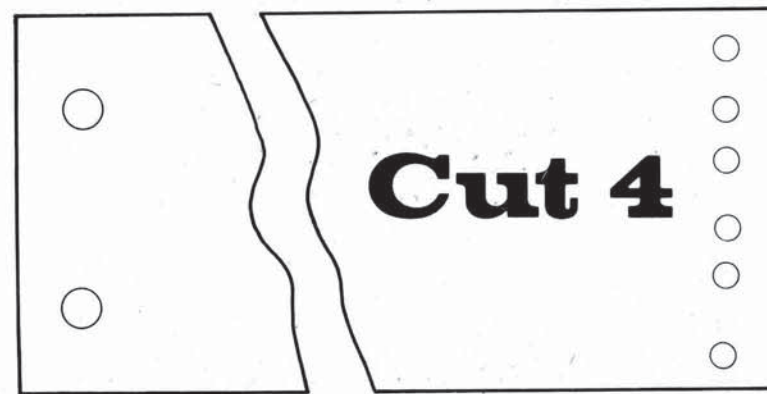
NOTIONS:

Rubber Cement
Cotton wrapped polyester thread
Leather Needle (Size 11)
No. 9 Drive Punch
No. 2 Drive Punch
4-AA Eyelets
Craftool Eyelet Setter - 7053

Distributed by
Tandy Warehouse Co.
A Tandy Corporation Co.
Fort Worth, Texas

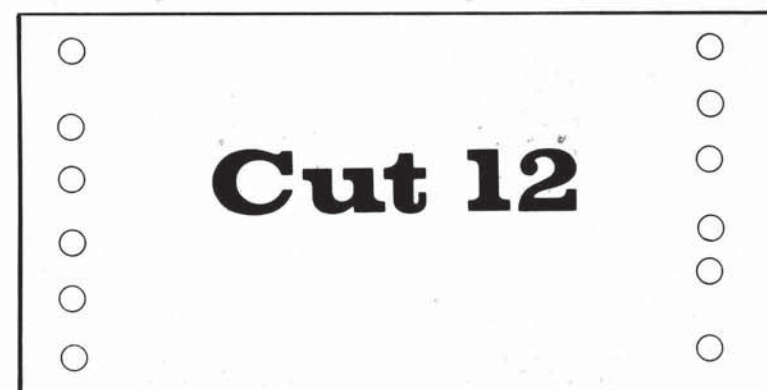


Pattern Pieces



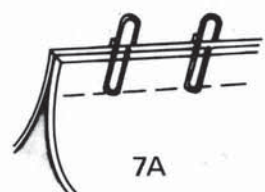
LENGTHEN OR SHORTEN ACCORDING TO WHERE BELT WILL BE WORN.

Belt Pattern is for size 31 waist.



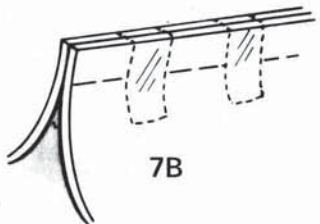
(READ GENERAL INSTRUCTIONS CAREFULLY BEFORE BEGINNING ASSEMBLY.)

General Instructions



7A

Leather is not manufactured as a fabric causing it to be less uniform than other sewing materials. There are many factors which cause a variation in the skin or hide of an animal such as age, climatic conditions, the food and care given it, the season it was slaughtered and the skill used in tanning.



7B

Because of these conditions genuine leather will occasionally have flaws on the skins. This is only natural and does not mean the skin is inferior.

Be sure to examine the skin before cutting and lay your pattern in such a manner to avoid any flaws.

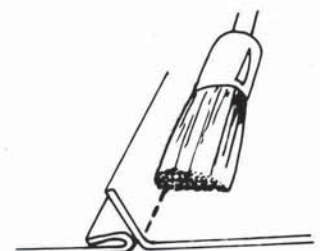


8A

All the lengthwise grainline markings of the pattern pieces are parallel to the back bone of the animal's skin. It is not advisable to cut pattern pieces on the crosswise grain because the leather tends to stretch.

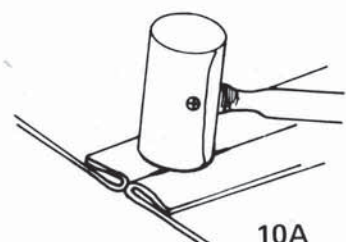
PROCEDURE:

1. Make a duplicate paper pattern for all parts marked "cut two". This is done because leather cannot be folded.



9A

2. Keeping in mind that a skin's greatest strength is down the center, you may now lay out your pattern pieces. The parts that will get the hardest wear should be cut from the back bone area.



10A

3. Keep the lengthwise grainline of the pattern parallel to the back bone of the animal skin. Try to have equal thicknesses of leather on related parts of the finished item.

4. Attaching the pattern to the skin may be done several ways, taping the pattern is one way; mending tape works very well, but just about any other type of tape would do. Weights may also be used to hold the pattern down. Of course, the pattern may also be pinned, if pins are placed in the seam allowance.

5. Cut with shears, being sure to use long, even strokes. On heavier leather you may wish to use a knife or razor of some sort. Some seamstresses prefer to trace around pattern with ball point pen or chalk prior to cutting.

6. Before you begin sewing, there are a few adjustments you should make on your machine. Change the needle, using a size 11 for lightweight leather and up to a size 14 for heavier weight leathers. The stitch regulator should be adjusted so there will be seven to ten stitches per inch. On sheer suedes as many as twelve stitches per inch may be desired. You should also use a thread which has more elasticity and strength than normal thread. Cotton wrapped polyester thread has these characteristics and is excellent to use on leather.

7. Seams can be held together with paper clips (7A), mending tape (7B) or pinned in the seam allowance. Ease the leather into the machine under the pressure foot slowly, being careful not to stretch the leather. Tie the threads; do not backstitch this will weaken the leather.

8. Curved seams should be clipped to reduce bulk (8A).

9. Rubber cement is now applied to the seam allowance of all seams including curved seams (9A).

10. Seams should then be pounded with a mallet so the seam will lie flat. Allow this to dry, then lift the seam up lightly. It will now lie flat with less tension and pull.

11. Pressing may be done with a warm iron. Place brown paper or a press cloth between leather and iron. Do not steam.

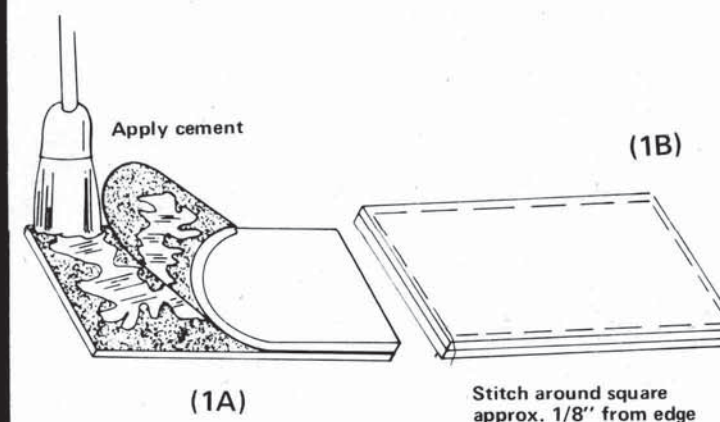
(No part of this or any other page may be reproduced without written permission.)

Printed in USA

Distributed by
Tandy Warehouse Co.
A Tandy Corporation Co.
Fort Worth, Texas

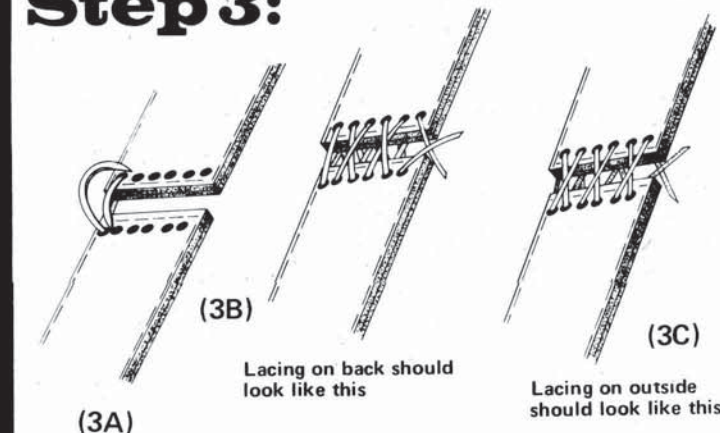
Assembly Instructions

Step 1:



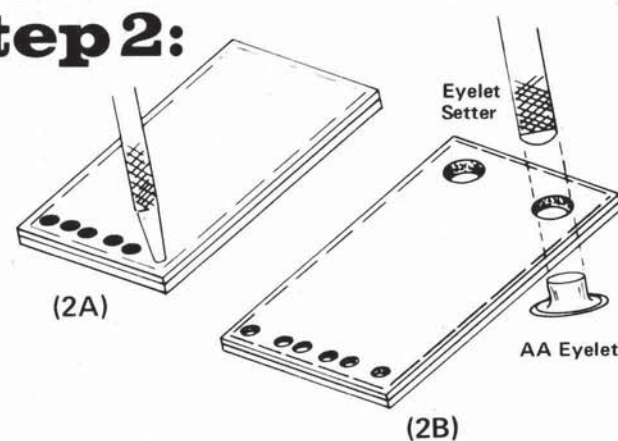
With wrong sides together, cement two pieces together (1A). Continue cementing pieces together until you have all sixteen pieces together making eight sections. Two of the sections will be the closure sections which may be longer or shorter in length than the other six sections. Stitch completely around the sections approximately 1/8" from the edge (1B).

Step 3:



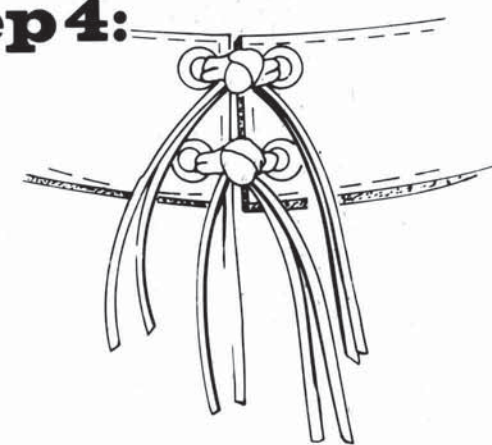
LACING SECTIONS TOGETHER. Cut seven strips about 14" long and about 1/8" wide. Begin lacing from back side of sections. Come up and cross over and go back down into second holes (3A). Cross over on underneath and come up through third holes. Repeat for other four holes (3B). Lace should end on underside. Tie loose ends in knot (3C). Lace all sections together.

Step 2:



PUNCHING HOLES. With a No. 2 drive punch, punch holes as indicated on pattern on both ends of six matching section (2A). On the two sections which will be the front closure sections, punch holes which correspond with other holes, making sure to punch them on only one end. On the other end punch two holes with a No. 9 drive punch. Place eyelet through right side of belt section. Use eyelet setter to spread post of eyelet apart (2B). Repeat for second eyelet.

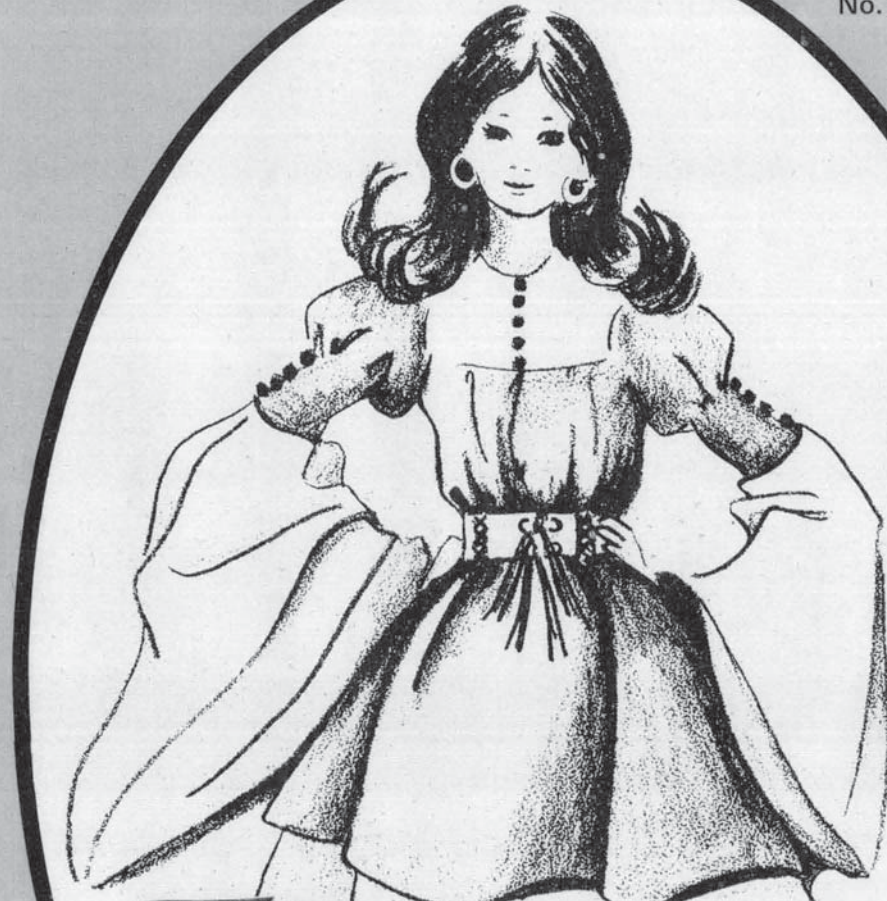
Step 4:



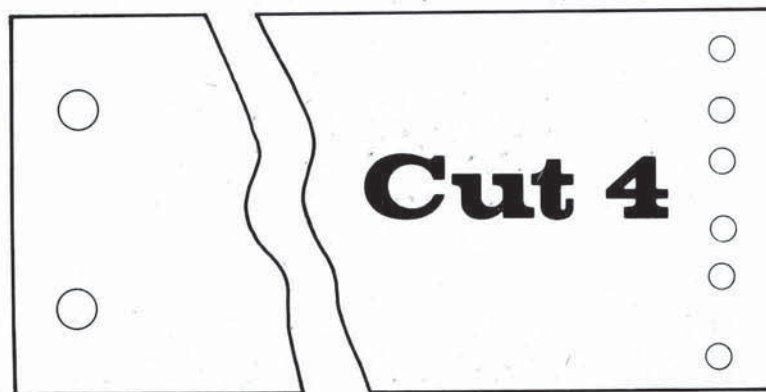
CLOSURE. Cut two strips 1/4" wide and 14" long. Loop through eyelets and cut strips in half up to knotted part (4A).

LEATHER ACCESSORIES PATTERN PAK

No. 2697



Pattern Pieces



LENGTHEN OR SHORTEN ACCORDING TO WHERE BELT WILL BE WORN.

Belt Pattern is for size 31 waist.



Distributed by
Tandy Warehouse Co.
A Tandy Corporation Co.
Fort Worth, Texas

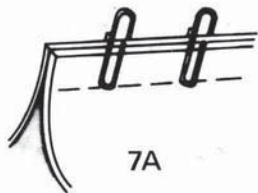
SUGGESTED MATERIAL:

Reversible Garment Sides
Big Sur Garment Splits or,
Vogue Garment Splits

NOTIONS:

Rubber Cement
Cotton wrapped polyester thread
Leather Needle (Size 11)
No. 9 Drive Punch
No. 2 Drive Punch
4-AA Eyelets
Craftool Eyelet Setter - 7053

General Instructions



7A



Leather is not manufactured as a fabric causing it to be less uniform than other sewing materials. There are many factors which cause a variation in the skin or hide of an animal such as age, climatic conditions, the food and care given it, the season it was slaughtered and the skill used in tanning.

Because of these conditions genuine leather will occasionally have flaws on

5. Cut with shears, being sure to use long, even strokes. On heavier leather you may wish to use a knife or razor of some sort. Some seamstresses prefer to trace around pattern with ball point pen or chalk prior to cutting.

6. Before you begin sewing, there are a few adjustments you should make on your machine. Change the needle, using a size 11 for lightweight leather and up to a size 14 for heavier weight leathers

○ ○

○ ○

○ ○

○ ○

○ ○

○ ○

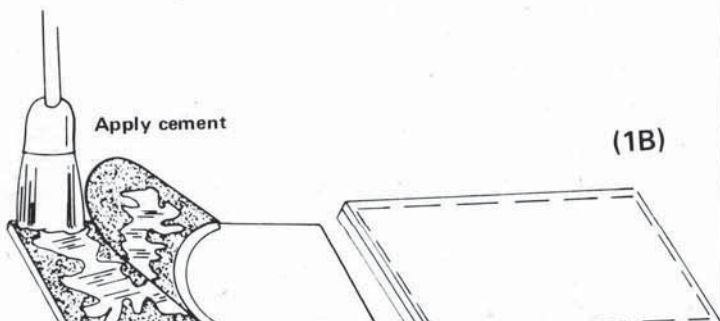
○ ○

Cut 12

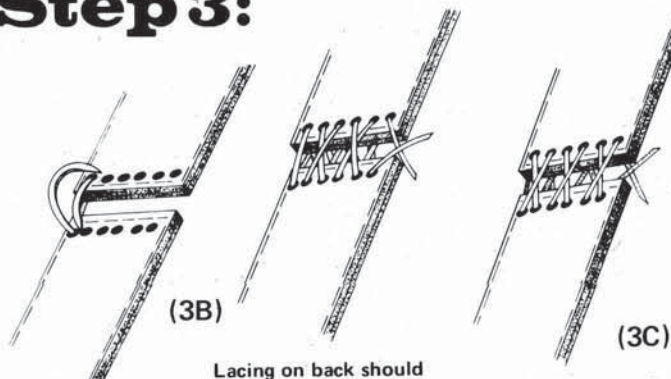
(READ GENERAL INSTRUCTIONS CAREFULLY BEFORE BEGINNING ASSEMBLY.)

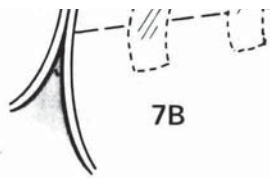
Assembly Instructions

Step 1:



Step 3:

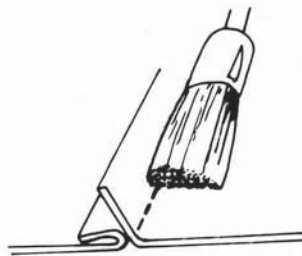




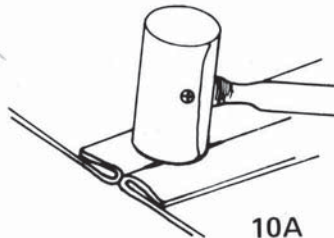
7B



8A



9A



10A

the skins. This is only natural and does not mean the skin is inferior.

Be sure to examine the skin before cutting and lay your pattern in such a manner to avoid any flaws.

All the lengthwise grainline markings of the pattern pieces are parallel to the back bone of the animal's skin. It is not advisable to cut pattern pieces on the crosswise grain because the leather tends to stretch.

PROCEDURE:

1. Make a duplicate paper pattern for all parts marked "cut two". This is done because leather cannot be folded.

2. Keeping in mind that a skin's greatest strength is down the center, you may now lay out your pattern pieces. The parts that will get the hardest wear should be cut from the back bone area.

3. Keep the lengthwise grainline of the pattern parallel to the back bone of the animal skin. Try to have equal thicknesses of leather on related parts of the finished item.

4. Attaching the pattern to the skin may be done several ways, taping the pattern is one way; mending tape works very well, but just about any other type of tape would do. Weights may also be used to hold the pattern down. Of course, the pattern may also be pinned, if pins are placed in the seam allowance.

The stitch regulator should be adjusted so there will be seven to ten stitches per inch. On sheer suedes as many as twelve stitches per inch may be desired. You should also use a thread which has more elasticity and strength than normal thread. Cotton wrapped polyester thread has these characteristics and is excellent to use on leather.

7. Seams can be held together with paper clips (7A), mending tape (7B) or pinned in the seam allowance. Ease the leather into the machine under the pressure foot slowly, being careful not to stretch the leather. Tie the thread; do not backstitch this will weaken the leather.

8. Curved seams should be clipped to reduce bulk (8A).

9. Rubber cement is now applied to the seam allowance of all seams including curved seams (9A).

10. Seams should then be pounded with a mallet so the seam will lie flat. Allow this to dry, then lift the seam up lightly. It will now lie flat with less tension and pull.

11. Pressing may be done with a warm iron. Place brown paper or a press cloth between leather and iron. Do not steam.

(No part of this or any other page may be reproduced without written permission.)

Printed in USA

Distributed by
Tandy Warehouse Co.
A Tandy Corporation Co.
Fort Worth, Texas



(1A)

Stitch around square approx. 1/8" from edge

With wrong sides together, cement two pieces together (1A). Continue cementing pieces together until you have all sixteen pieces together making eight sections. Two of the sections will be the closure sections which may be longer or shorter in length than the other six sections. Stitch completely around the sections approximately 1/8" from the edge (1B).

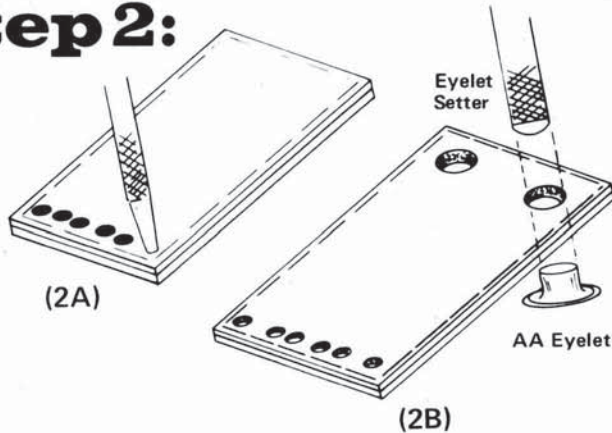
look like this

Lacing on outside should look like this

(3A)

LACING SECTIONS TOGETHER. Cut seven strips about 14" long and about 1/8" wide. Begin lacing from back side of sections. Come up and cross over and go back down into second holes (3A). Cross over on underneath and come up through third holes. Repeat for other four holes (3B). Lace should end on underside. Tie loose ends in knot (3C). Lace all sections together.

Step 2:

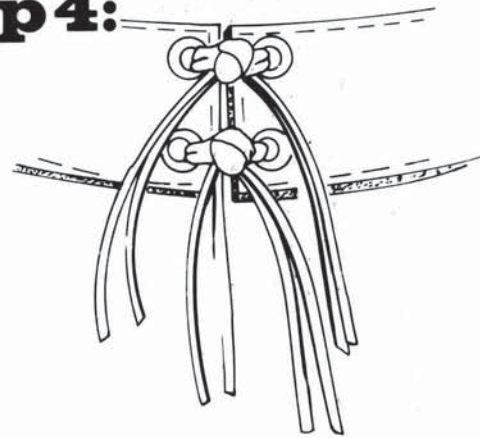


(2A)

(2B)

PUNCHING HOLES. With a No. 2 drive punch, punch holes as indicated on pattern on both ends of six matching section (2A). On the two sections which will be the front closure sections, punch holes which correspond with other holes, making sure to punch them on only one end. On the other end punch two holes with a No. 9 drive punch. Place eyelet through right side of belt section. Use eyelet setter to spread post of eyelet apart (2B). Repeat for second eyelet.

Step 4:



CLOSURE. Cut two strips 1/4" wide and 14" long. Loop through eyelets and cut strips in half up to knotted part (4A).