

Ladies Skirt And Jacket Pattern

No. 2682



Suggested Materials:

New Zealand Lambskin Suede,
Sheer Lambskin Suede or Garment
Cabretta.

You Will Need:

Zipper, Durable Dot Snaps,
Interfacing, Rubber Cement,
Cotton Wrapped Polyester
Thread.

tandy
LEATHER COMPANY
TC A TANDY CORPORATION COMPANY

General Instructions

Leather is nature's product and subject to its varying conditions. Climate, the food and care given the animal and season of slaughter are a few of many factors which occasionally effect skin flaws. These are natural and in no way mean the skin is inferior. Eliminate flaws, when cutting, by placing the pattern in such a way as to avoid them.

Cutting pattern pieces on crosswise grain (against the grain) tends to stretch leather. Therefore, all lengthwise grain line markings on the pattern are parallel to backbone.

1. Because leather can not be folded, fashion duplicate paper patterns for all parts marked 'cut two'.

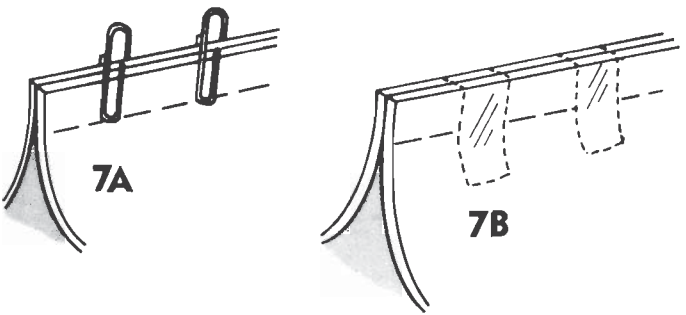
2. Lay out pattern pieces. Keep in mind the skin's greatest strength is down the center and parts which will incur the most wear should be cut from this backbone area.

3. Keep the pattern's lengthwise grainline parallel to backbone and try to have equal thicknesses of leather for related parts of your leather project.

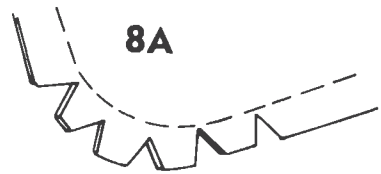
4. Tape pattern to skin or attach with pins placed in the seam allowance. (Pattern may also be weighted down.)

5. Prior to cutting, you may want to trace around the pattern with chalk or pen. Then, with shears or razor knife, make the cut — employing long, even strokes.

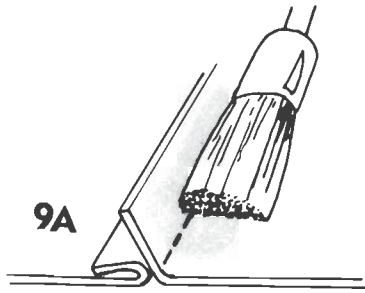
6. Sewing leather usually entails some minor machine adjustments. First, change needles . . . we suggest size 11 for lightweight leathers and, for leathers of heavier weights, size 14. Adjust the stitch regulator to allow for seven to ten stitches per inch. (For sheer suedes, as many as twelve stitches per inch may be applied.) An extra-strength, more elastic thread (cotton-wrapped polyester thread) is needed for leatherwork.



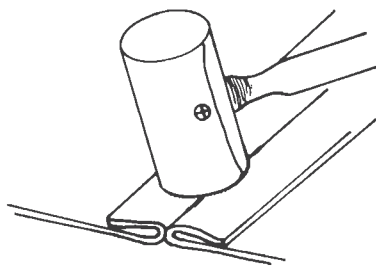
7. Hold seams together with paperclips (7A), mending tape (7B) or pin in the seam allowance. Gently position leather under the pressure foot and tie the threads. Avoid backstitching — this weakens the leather.



8. Reduce bulk by simply clipping curved seams (8A).



9. Now, apply rubber cement to all seam allowances (including curved seams) (9A).



10. Pounding seams with a mallet, then lifting them lightly, flattens seams and lessens tension and pull.

11. Place brown paper or press cloth between leather and iron and press with warm iron — do not steam.

Ladies Skirt And Jacket Pattern

No. 2682



Suggested Materials:

New Zealand Lambskin Suede, Sheer Lambskin Suede or Garment Cabretta.

You Will Need:

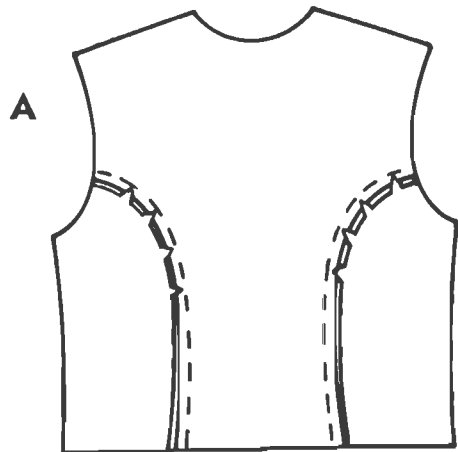
Zipper, Durable Dot Snaps, Interfacing, Rubber Cement, Cotton Wrapped Polyester Thread.



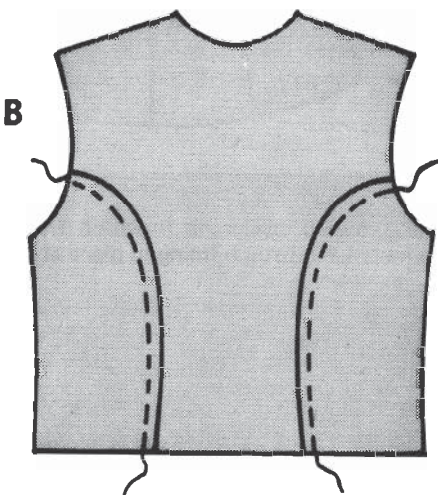
Assembly Instructions

Gray screen indicates right side of leather.

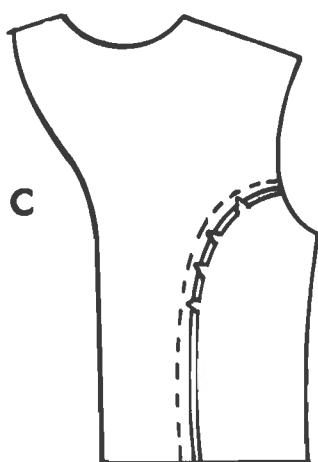
1 Jacket



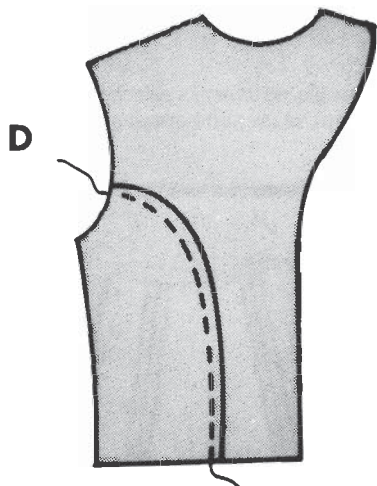
With right sides of leather together, align notches of side back to center back, easing in side backs (A). Stitch.



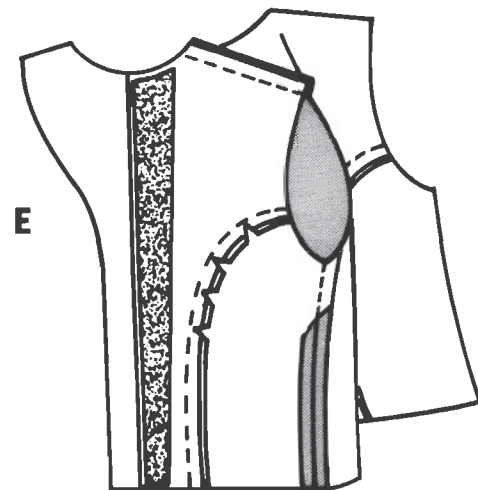
Clip seam edges and press toward side backs. Topstitch side backs 1/8" from seam (B).



With right sides of leather together, align notches of side front to center front, easing in side fronts (C). Stitch.

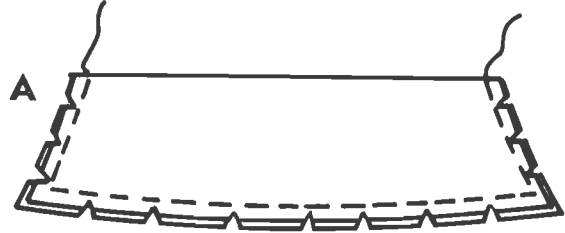


Clip seam edges and press toward side fronts. Topstitch side fronts 1/8" from seam (D).

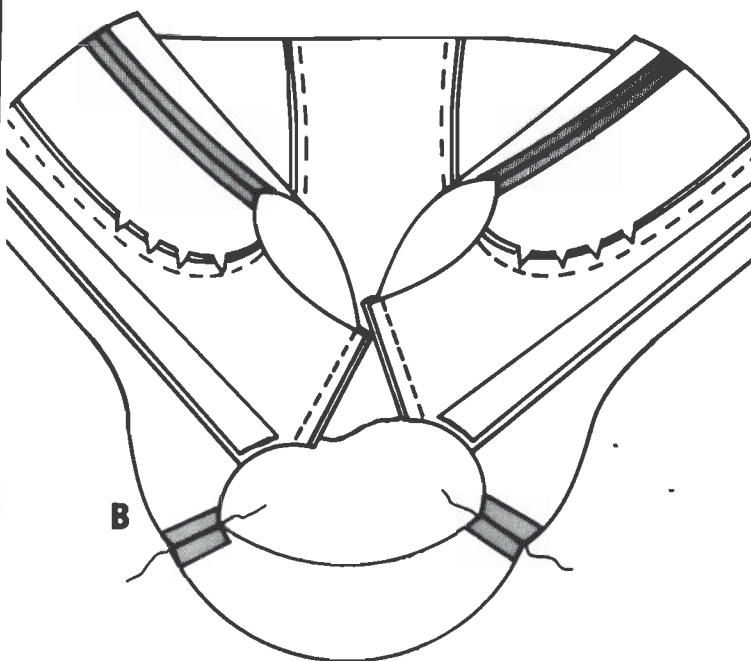


Stitch fronts to backs at shoulders and side seams. Cement seam allowances open. Cement interfacings in place about 1/8" on inside of fold line (E).

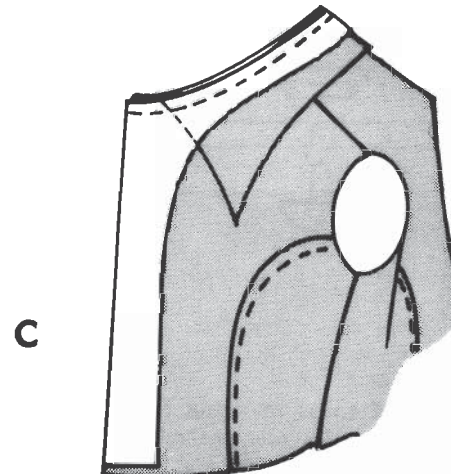
2



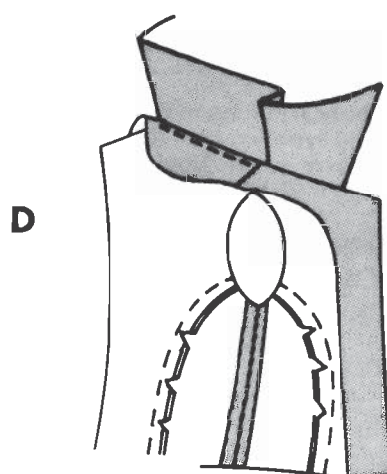
COLLAR. With right sides of collar together, stitch collars together, clipping at corners and curves (A). Trim and turn.



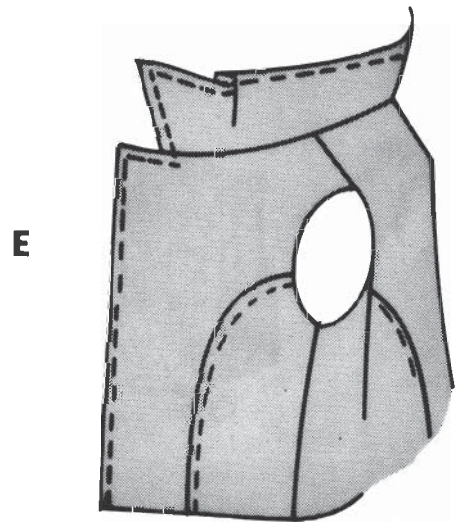
With right sides of leather together, stitch back facing to shoulder seam of self-facing (B).



Align collar between notches on center front. Underside of collar should be against right side of jacket. Fold self-facing on fold line and pin around neck edge, catching collar and jacket. Continue along back facing. Stitch. Clip and trim close to stitching (C).

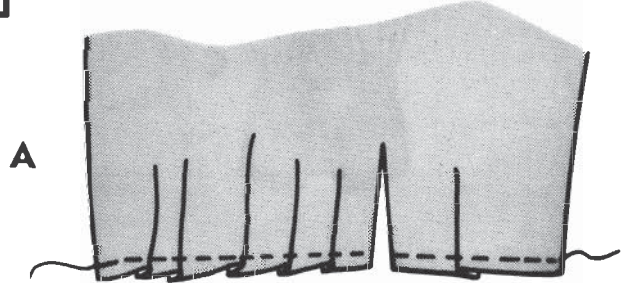


Turn upper collar and facing right side out. Press. Lift back facing and sew neck seam edges together to keep from shifting (D).

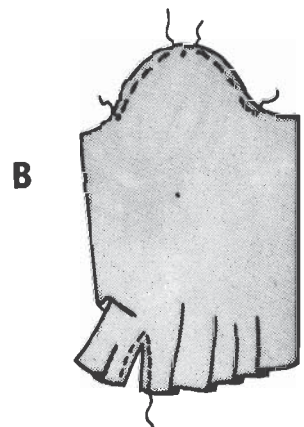


Topstitch front along front edges and collar 1/8" from edge (E).

3



SLEEVES. Make pleats at lower edge of sleeves along notches indicated, following directions of arrows. Baste (A).



Ease stitch upper edge of sleeve between small dots as shown. For easing, stitch along seam line, using long stitches. Reinforce sleeve slot at lower edge of sleeve. To reinforce, stitch along stitching lines, using small stitches. Cut between stitching to upper end (B).

General Instructions

Leather is nature's product and subject to its varying conditions. Climate, the food and care given the animal and season of slaughter are a few of many factors which occasionally effect skin flaws. These are natural and in no way mean the skin is inferior. Eliminate flaws, when cutting, by placing the pattern in such a way as to avoid them.

Cutting pattern pieces on crosswise grain (against the grain) tends to stretch leather. Therefore, all lengthwise grain line markings on the pattern are parallel to backbone.

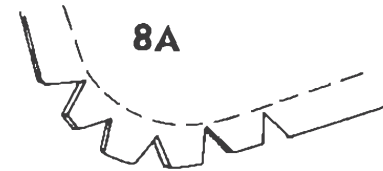
1. Because leather can not be folded, fashion duplicate paper patterns for all parts marked 'cut two'.

2. Lay out pattern pieces. Keep in mind the skin's greatest strength is down the center and parts which will incur the most wear should be cut from this backbone area.

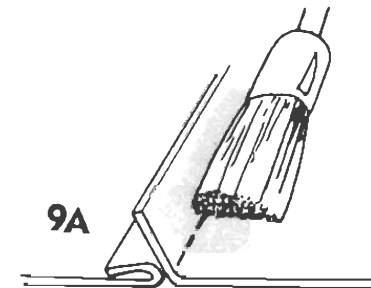
3. Keep the pattern's lengthwise grainline parallel to backbone and try to have equal thicknesses of leather for related parts of your leather project.

4. Tape pattern to skin or attach with pins placed in the seam allowance. (Pattern may also be weighted down.)

5. Prior to cutting, you may want to trace around the pattern with chalk or pen. Then, with shears or razor knife, make the cut — employing long, even strokes.



8. Reduce bulk by simply clipping curved seams (8A).



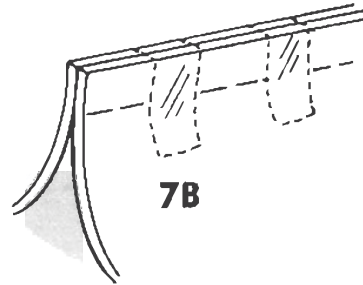
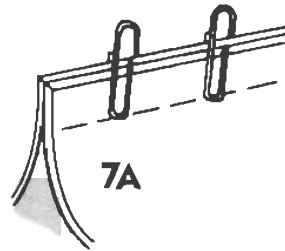
9. Now, apply rubber cement to all seam allowances (including curved seams) (9A).

Ladies Skirt And Jacket Pattern

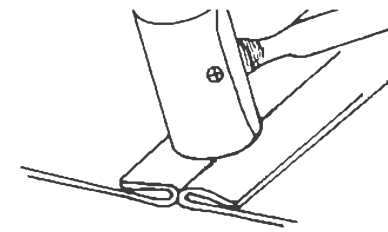
No. 2682



6. Sewing leather usually entails some minor machine adjustments. First, change needles . . . we suggest size 11 for lightweight leathers and, for leathers of heavier weights, size 14. Adjust the stitch regulator to allow for seven to ten stitches per inch. (For sheer suedes, as many as twelve stitches per inch may be applied.) An extra-strength, more elastic thread (cotton-wrapped polyester thread) is needed for leatherwork.



7. Hold seams together with paperclips (7A), mending tape (7B) or pin in the seam allowance. Gently position leather under the pressure foot and tie the threads. Avoid backstitching — this weakens the leather.



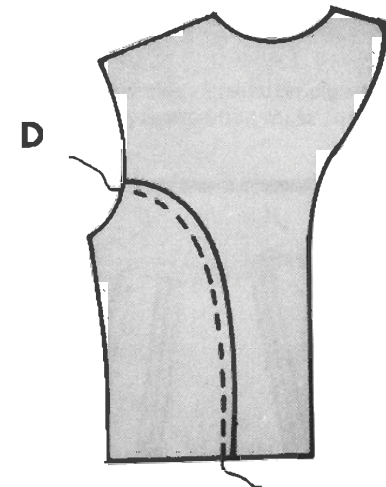
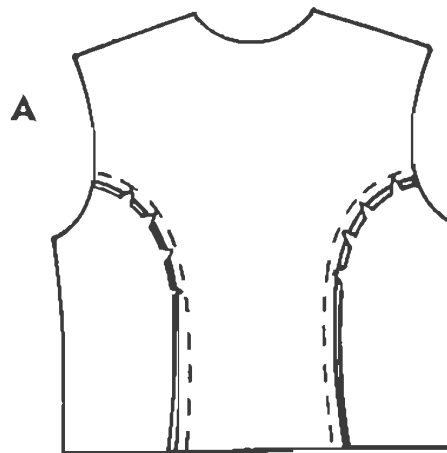
10. Pounding seams with a mallet, then lifting them lightly, flattens seams and lessens tension and pull.

11. Place brown paper or press cloth between leather and iron and press with warm iron — do not steam.

Assembly Instructions

Gray screen indicates right side of leather.

1 Jacket



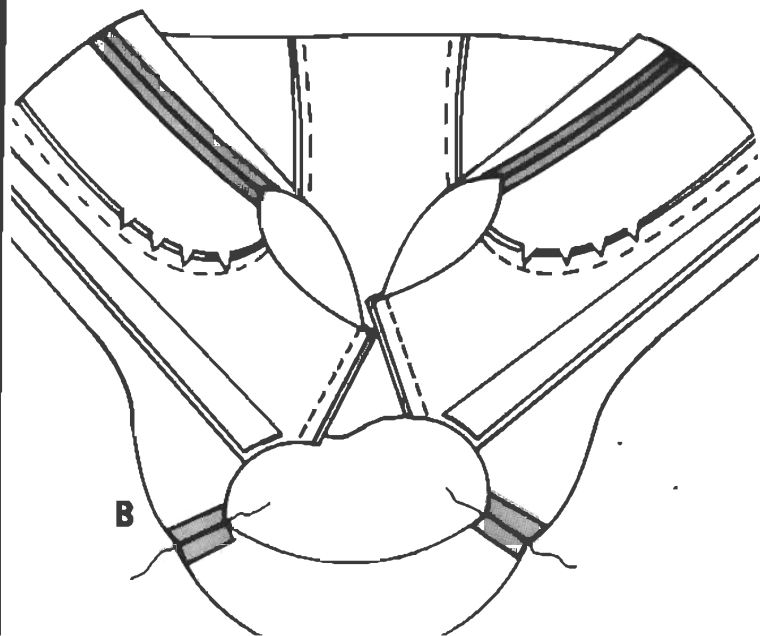
Clip seam edges and press toward side fronts. Topstitch side.

Suggested Materials:

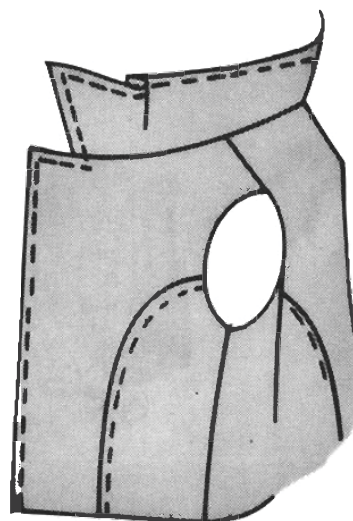
New Zealand Lambskin Suede,
Sheer Lambskin Suede or Garment
Cabretta.

You Will Need:

Zipper, Durable Dot Snaps,
Interfacing, Rubber Cement,
Cotton Wrapped Polyester
Thread.

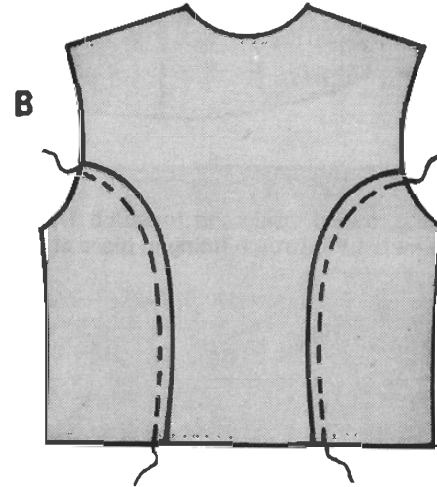


E

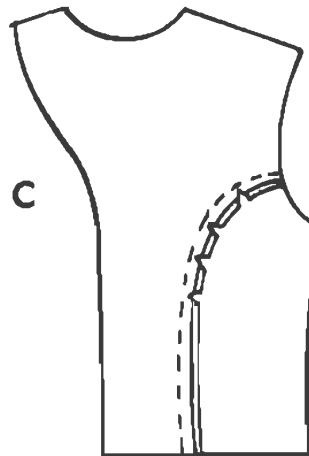


Topstitch front along front edges and collar 1/8" from edge (E).

With right sides of leather together, align notches of side back to center back, easing in side backs (A). Stitch.

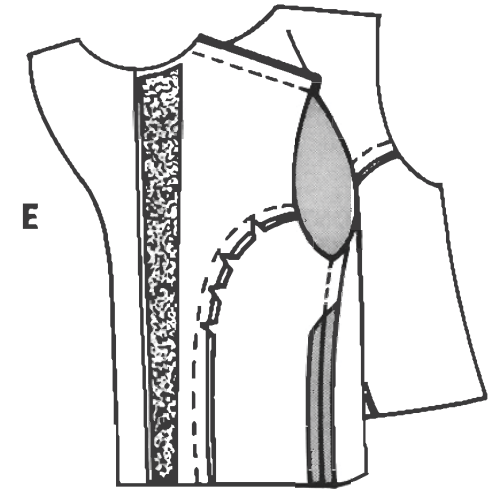


Clip seam edges and press toward side backs. Topstitch side backs 1/8" from seam (B).



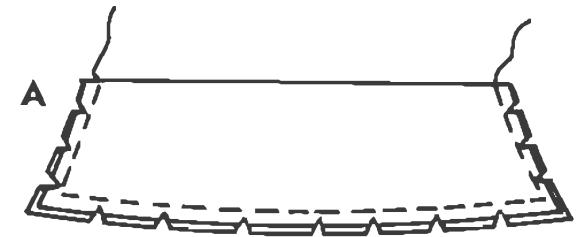
With right sides of leather together, align notches of side front to center front, easing in side fronts (C). Stitch.

fronts 1/8" from seam (D).



Stitch fronts to backs at shoulders and side seams. Cement seam allowances open. Cement interfacings in place about 1/8" on inside of fold line (E).

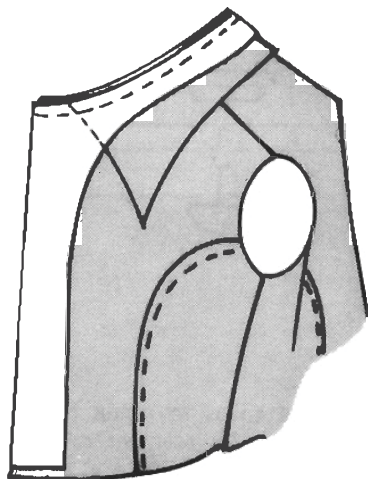
2



COLLAR. With right sides of collar together, stitch collars together, clipping at corners and curves (A). Trim and turn.

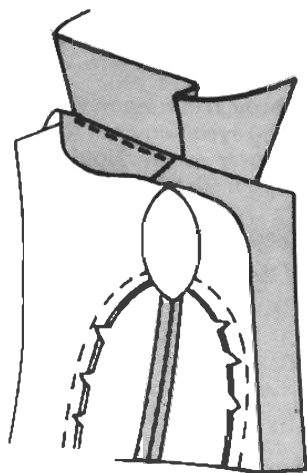
With right sides of leather together, stitch back facing to shoulder seam of self-facing (B).

C



Align collar between notches on center front. Underside of collar should be against right side of jacket. Fold self-facing on fold line and pin around neck edge, catching collar and jacket. Continue along back facing. Stitch. Clip and trim close to stitching (C).

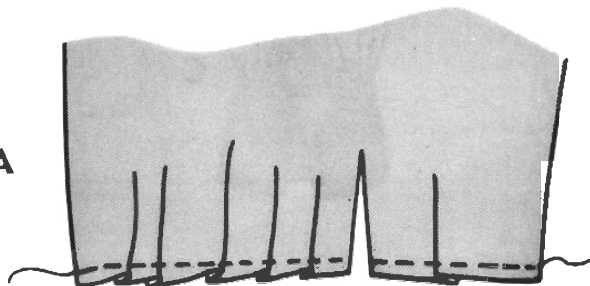
D



Turn upper collar and facing right side out. Press. Lift back facing and sew neck seam edges together to keep from shifting (D).

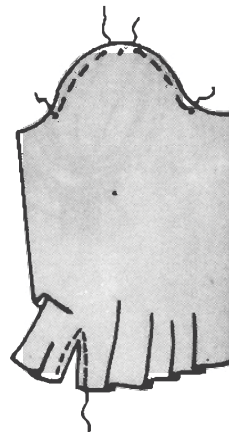
3

A

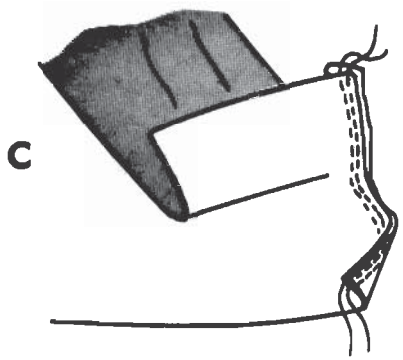


SLEEVES. Make pleats at lower edge of sleeves along notches indicated, following directions of arrows. Baste (A).

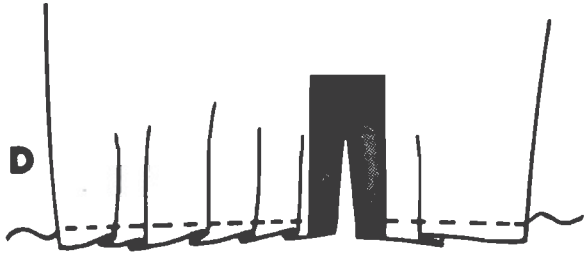
B



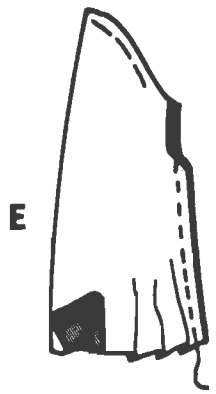
Ease stitch upper edge of sleeve between small dots as shown. For easing, stitch along seam line, using long stitches. Reinforce sleeve slot at lower edge of sleeve. To reinforce, stitch along stitching lines, using small stitches. Cut between stitching to upper end (B).



With right sides of slot binding and sleeve together, place stitching on sleeve 1/4" from raw edge of slot binding. Stitch alongside of previous stitching (C).



Turn in remaining edge and topstitch 1/8" away from edge (D).

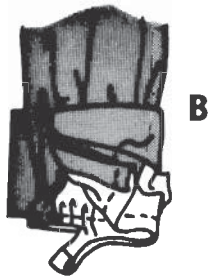


Stitch sleeve seam, press and cement open. Tap with mallet (E).

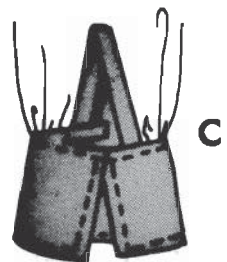
4



CUFFS. Fold cuff, right sides of leather together, along fold line; stitch one end. Trim. Turn. Press (A).



Pin cuff to sleeve, placing finished edge at sleeve slot farthest from seam and back lap at extension on cuff, keeping front lap free. Adjust gathers; baste (B).

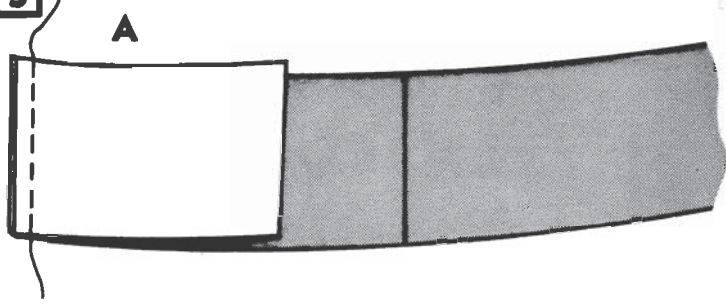


Turn front lap to inside; baste. Stitch. Trim. Press seam toward cuff and cement. Overlap remaining edge on cuff and topstitch just below seam (C). Also stitch completely around cuff.



Pin sleeve in armhole, aligning seam to underarm seam in jacket. Adjust ease; distributing evenly. Baste. Stitch. Trim close to stitching (D).

5



WAISTBAND. With right sides of leather together, stitch front waistbands to both ends of back waistband. Cement seam allowances open (A).

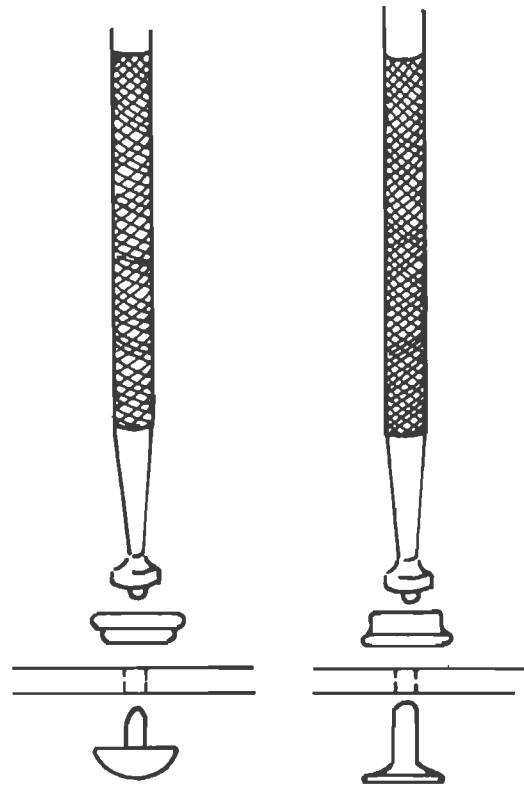


Match raw edge of waistband to raw edge of jacket bottom. Baste waistband to jacket. Make sure to align side seams of jacket to side seams of waistband. Stitch (B).



Turn. Press waistband and seam allowances down. Fold waistband on fold line bringing back of waistband to jacket inside. Place remaining raw edge of waistband over seams. Topstitch close to edge and completely around waistband (C). Trim excess waistband on jacket inside.

6



SNAPS. Install snaps to jacket front, cuffs and waistband as indicated by pattern placement dots.

1. Mark snap locations. Use No. 3 Drive Punch for holes.

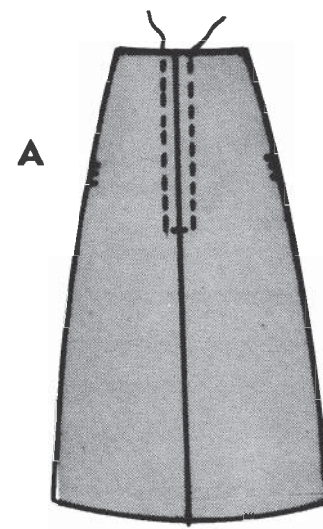
2. Push button through first hole in leather garment (leaving head of button on outside) and rest head of button on concave side of anvil. Be sure anvil is on a hard flat surface.

3. Place socket on leather over button prong, then hold setter firmly on button prong and strike sharply with mallet until button and socket are secure.

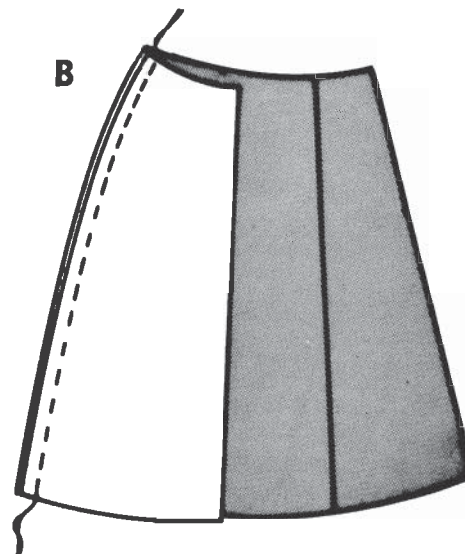
4. Push eyelet through corresponding hole (with eyelet on inside of garment). Place eyelet on anvil (concave side down), then put stud on leather over eyelet. Hold setter firmly on eyelet and strike sharply with mallet until stud and eyelet are secured.

5. If snap is difficult to close, align socket and stud and place anvil on bottom — tap lightly with mallet to close.

1 Skirt

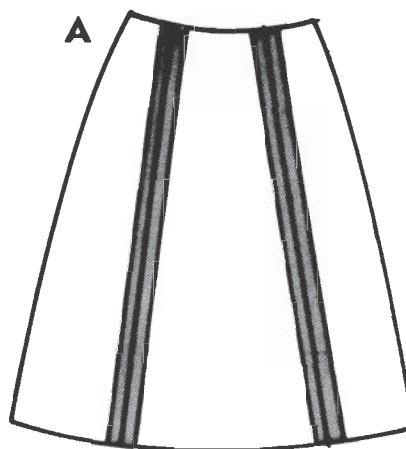


BACK. Stitch center backs together, stopping at single notch. Cement seams open. Sew zipper in back opening (A).



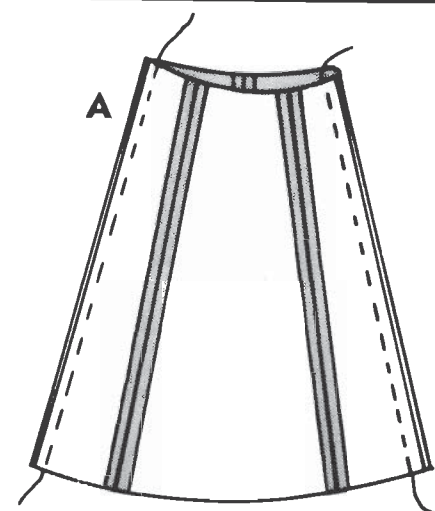
Matching triple notches on side backs and center back, stitch together. Cement seam allowances open (B).

2



FRONT. Matching single notches in side fronts and center front, stitch together. Cement seam allowances open (A).

3

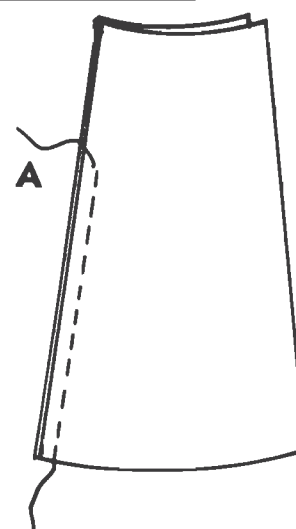


ATTACHING FRONT TO BACK. Matching double notches on side backs and side fronts, stitch together and cement seam allowances open (A).

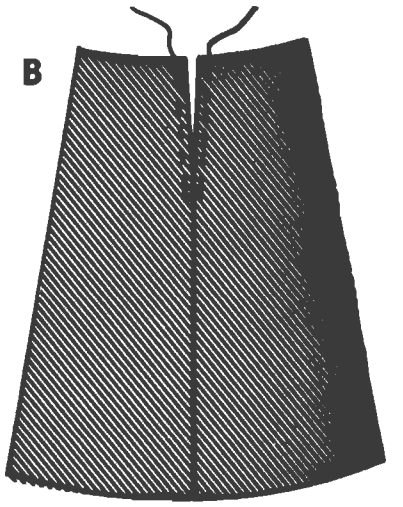


HEMMING. Turn skirt hem up to desired length. Use rubber cement to hem. Apply cement to inside of hem area and press down. Triangular notches may need to be cut in hem to reduce bulk (B). Tap with mallet so hem will lie flat.

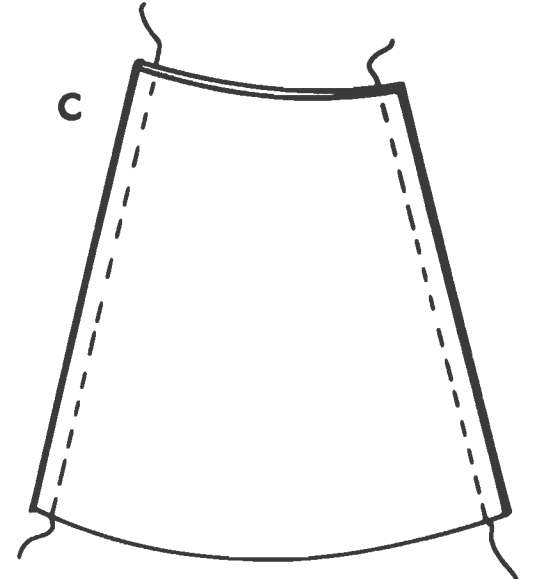
4



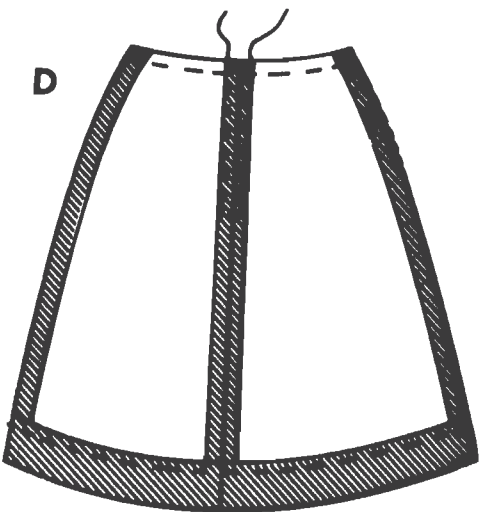
LINING. Right sides together, sew back linings to notch (A).



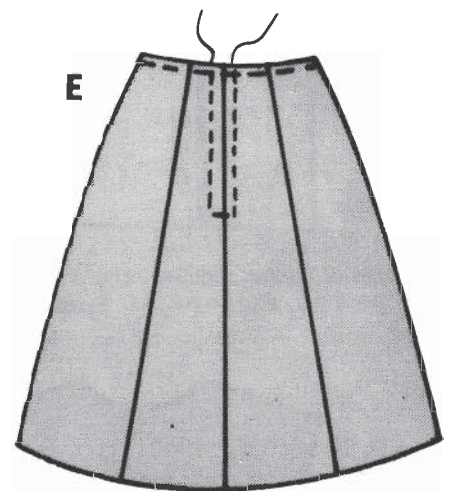
Press seams open. Topstitch edges of skirt lining where zipper will be (B).



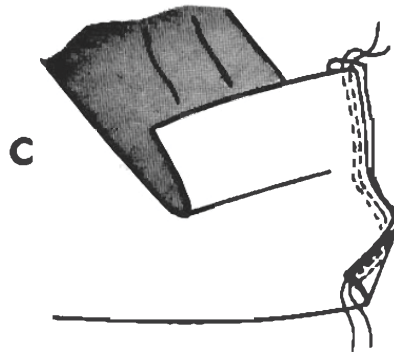
With right sides of back lining and front lining together, stitch side seams. Press seams open (C). Hem lining.



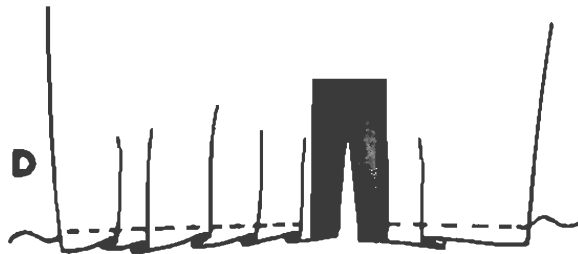
With right sides of lining and skirt together, align side seams and stitch completely around top. Clip and trim (D).



Turn lining toward inside and topstitch 1/8" from edge around top of skirt (E). Whipstitch lining in place at back zipper opening.



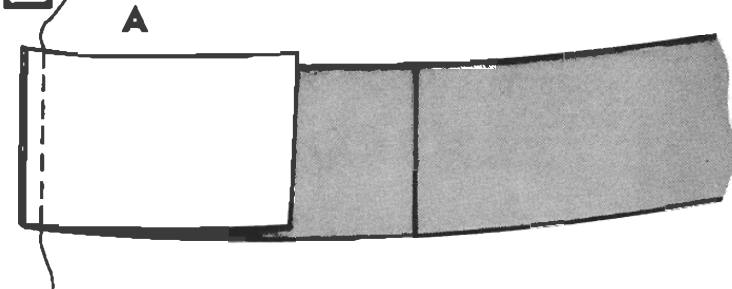
With right sides of slot binding and sleeve together, place stitching on sleeve 1/4" from raw edge of slot binding. Stitch alongside of previous stitching (C).



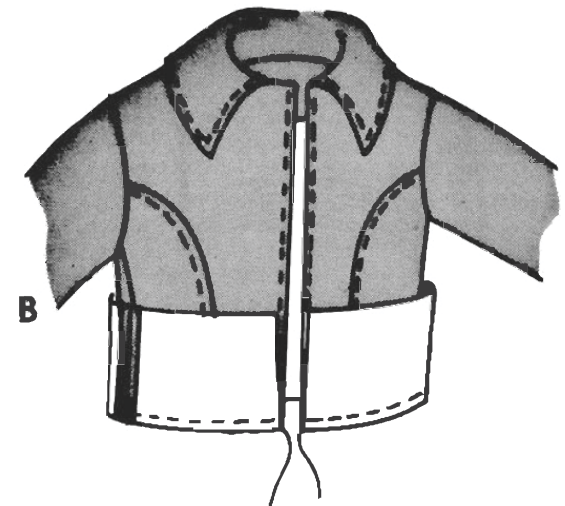
Turn in remaining edge and topstitch 1/8" away from edge (D).



5

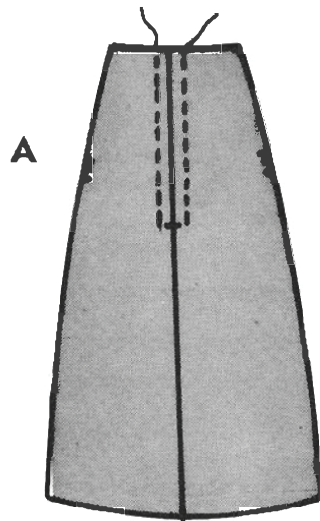


WAISTBAND. With right sides of leather together, stitch front waistbands to both ends of back waistband. Cement seam allowances open (A).

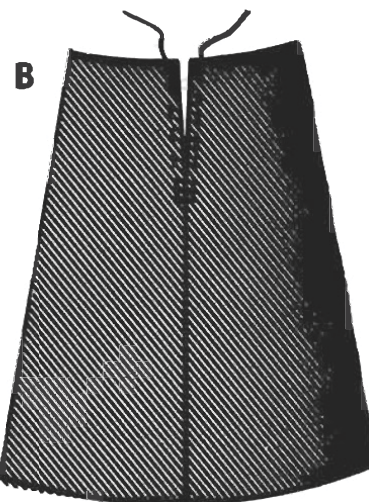
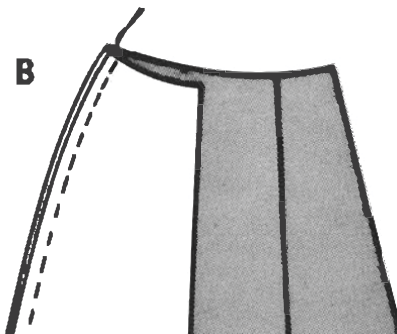


Match raw edge of waistband to raw edge of jacket bottom. Rest waistband to jacket. Make sure to align side seams of

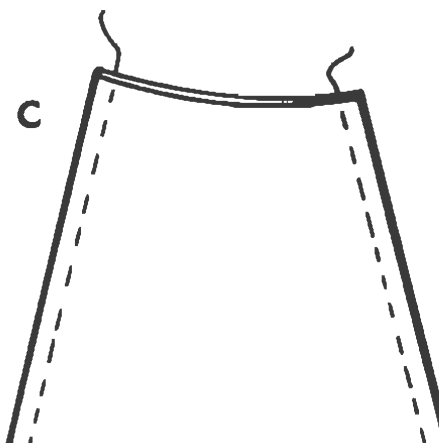
1 Skirt



BACK. Stitch center backs together, stopping at single notch. Cement seams open. Sew zipper in back opening (A).



Press seams open. Topstitch edges of skirt lining where zipper will be (B).



E



Stitch sleeve seam, press and cement open. Tap with mallet (E).

4

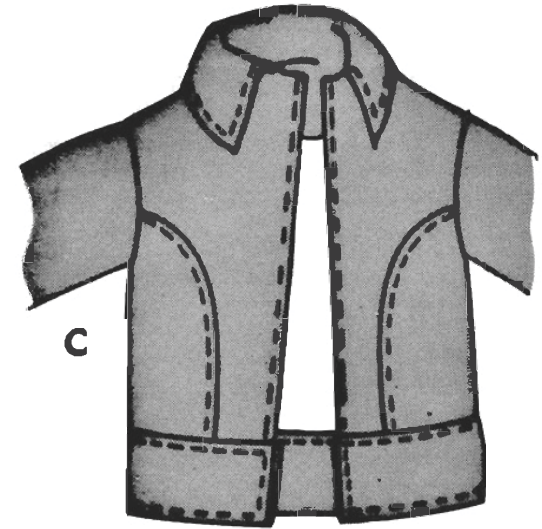


CUFFS. Fold cuff, right sides of leather together, along fold line; stitch one end. Trim. Turn. Press (A).



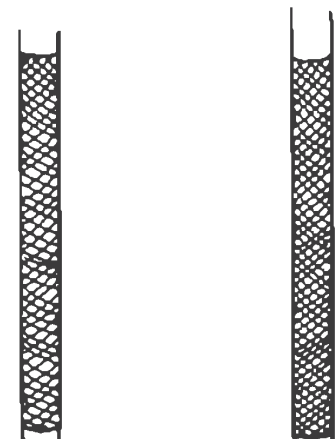
Pin cuff to sleeve, placing finished edge at sleeve slot farthest from seam and back lap at extension on cuff, keeping front lap free. Adjust gathers; baste (B).

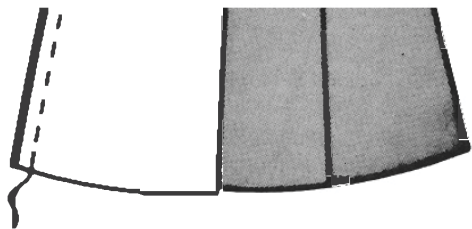
Baste waistband to jacket. Make sure to align side seams of jacket to side seams of waistband. Stitch (B).



Turn. Press waistband and seam allowances down. Fold waistband on fold line bringing back of waistband to jacket inside. Place remaining raw edge of waistband over seams. Topstitch close to edge and completely around waistband (C). Trim excess waistband on jacket inside.

6



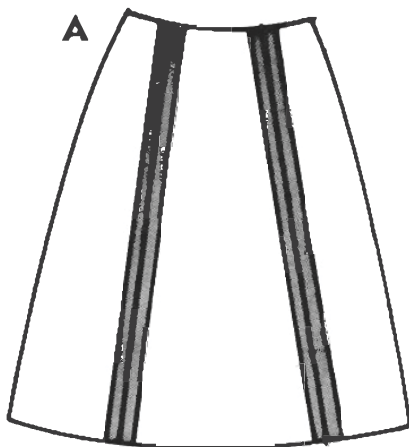


Matching triple notches on side backs and center back, stitch together. Cement seam allowances open (B).

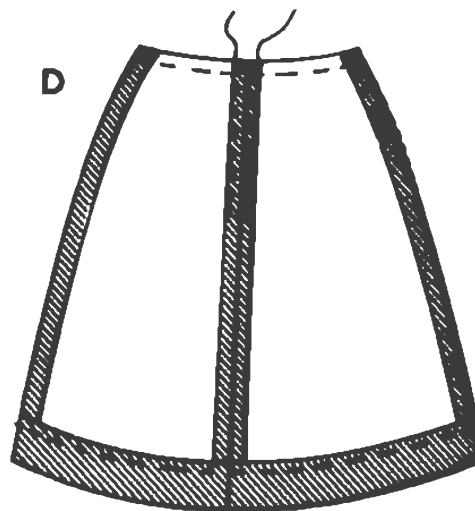


With right sides of back lining and front lining together, stitch side seams. Press seams open (C). Hem lining.

2

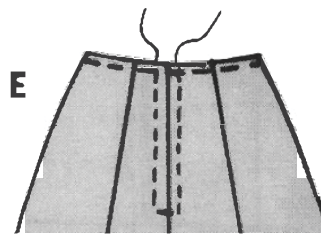
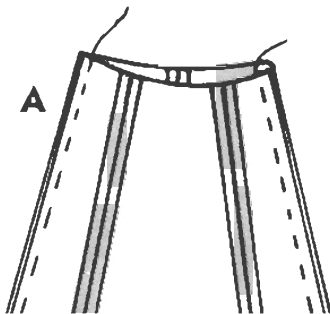


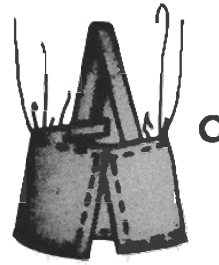
FRONT. Matching single notches in side fronts and center front, stitch together. Cement seam allowances open (A).



With right sides of lining and skirt together, align side seams and stitch completely around top. Clip and trim (D).

3

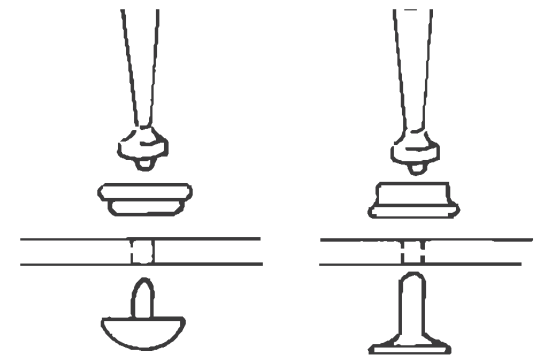




Turn front lap to inside; baste. Stitch. Trim. Press seam toward cuff and cement. Overlap remaining edge on cuff and topstitch just below seam (C). Also stitch completely around cuff.

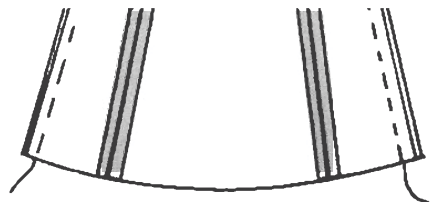


Pin sleeve in armhole, aligning seam to underarm seam in jacket. Adjust ease; distributing evenly. Baste. Stitch. Trim close to stitching (D).



SNAPS. Install snaps to jacket front, cuffs and waistband as indicated by pattern placement dots.

1. Mark snap locations. Use No. 3 Drive Punch for holes.
2. Push button through first hole in leather garment (leaving head of button on outside) and rest head of button on concave side of anvil. Be sure anvil is on a hard flat surface.
3. Place socket on leather over button prong, then hold setter firmly on button prong and strike sharply with mallet until button and socket are secure.
4. Push eyelet through corresponding hole (with eyelet on inside of garment). Place eyelet on anvil (concave side down), then put stud on leather over eyelet. Hold setter firmly on eyelet and strike sharply with mallet until stud and eyelet are secured.
5. If snap is difficult to close, align socket and stud and place anvil on bottom — tap lightly with mallet to close.

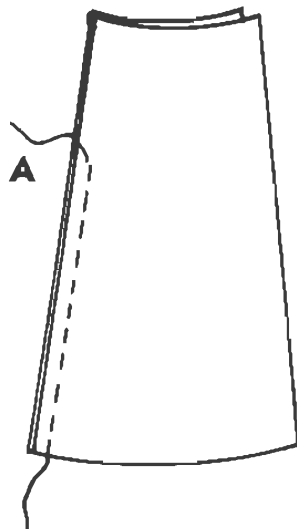


ATTACHING FRONT TO BACK. Matching double notches on side backs and side fronts, stitch together and cement seam allowances open (A).

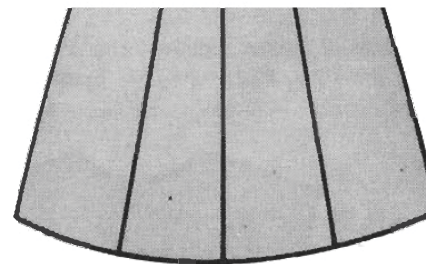


HEMMING. Turn skirt hem up to desired length. Use rubber cement to hem. Apply cement to inside of hem area and press down. Triangular notches may need to be cut in hem to reduce bulk (B). Tap with mallet so hem will lie flat.

4



LINING. Right sides together, sew back linings to notch (A).



Turn lining toward inside and topstitch 1/8" from edge around top of skirt (E). Whipstitch lining in place at back zipper opening.

**Ladies Skirt
& Jacket
Pattern Parts
Size 12**

Jacket Collar
Cut 2
Size 12

Stitch Line
Cut Line

**Jacket Front
Waistband**
Size 12

Cut 2

Stitch Line

Cut Line

Jacket Cuff
Size 12
Cut 2

EXTENSION

Stitch Line
Cut Line

**Jacket
Side Front**
Cut 2
(ONE RIGHT AND ONE LEFT)
Size 12

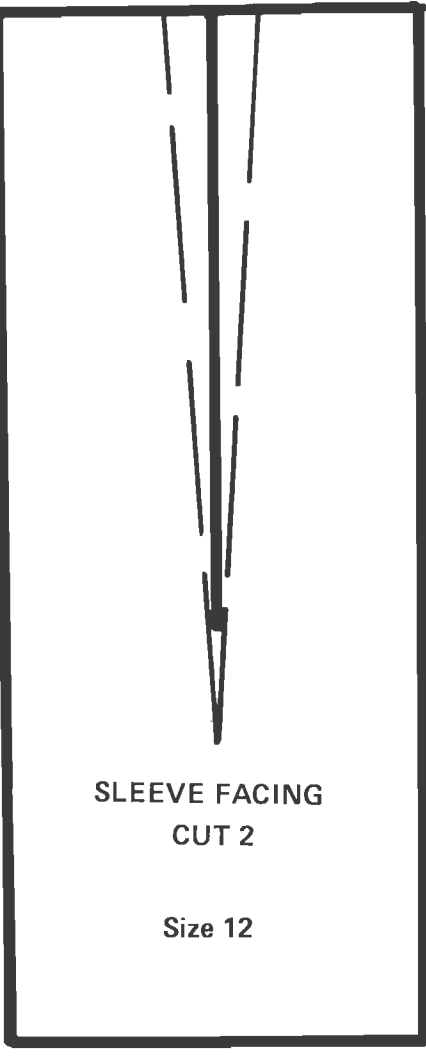
Cut Line
Stitch Line

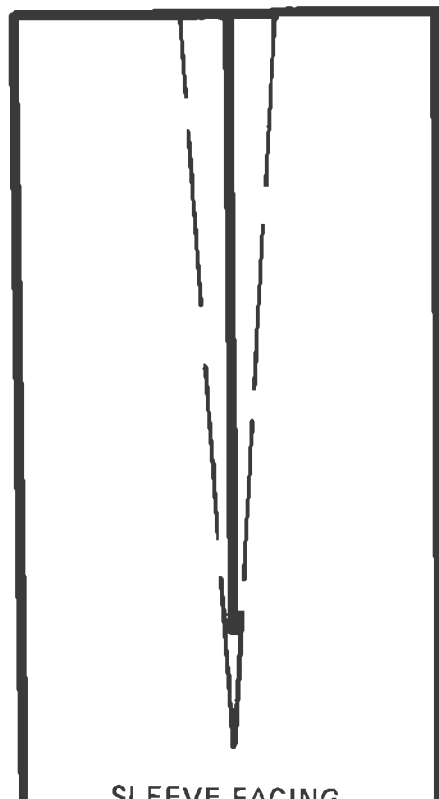
**Jacket
Side Back**
Cut 2
(ONE RIGHT AND ONE LEFT)
Size 12

Cut Line
Stitch Line

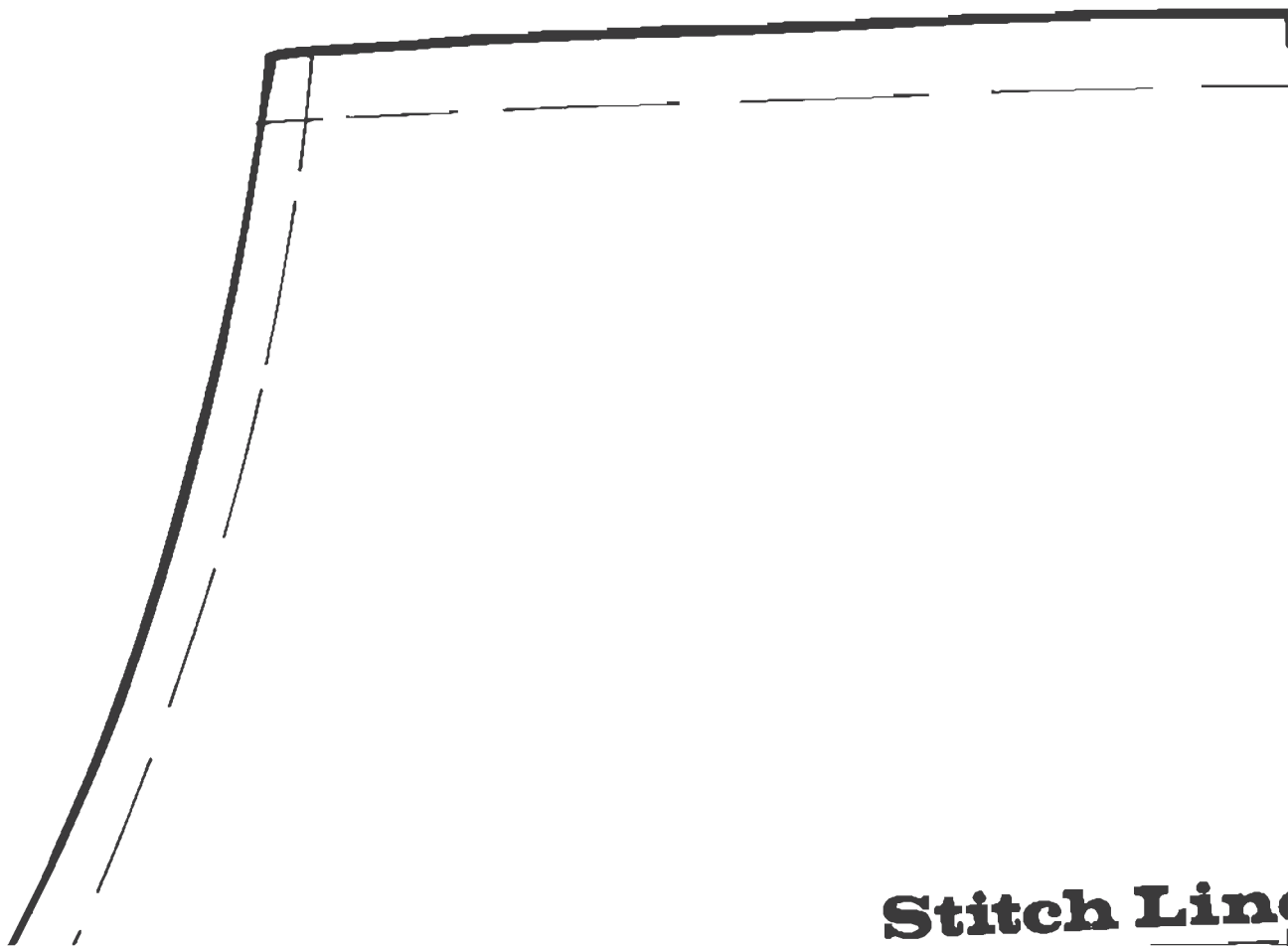
**Jacket
Back Facing**
Size 12

Cut Line
Stitch Line





SLEEVE FACING



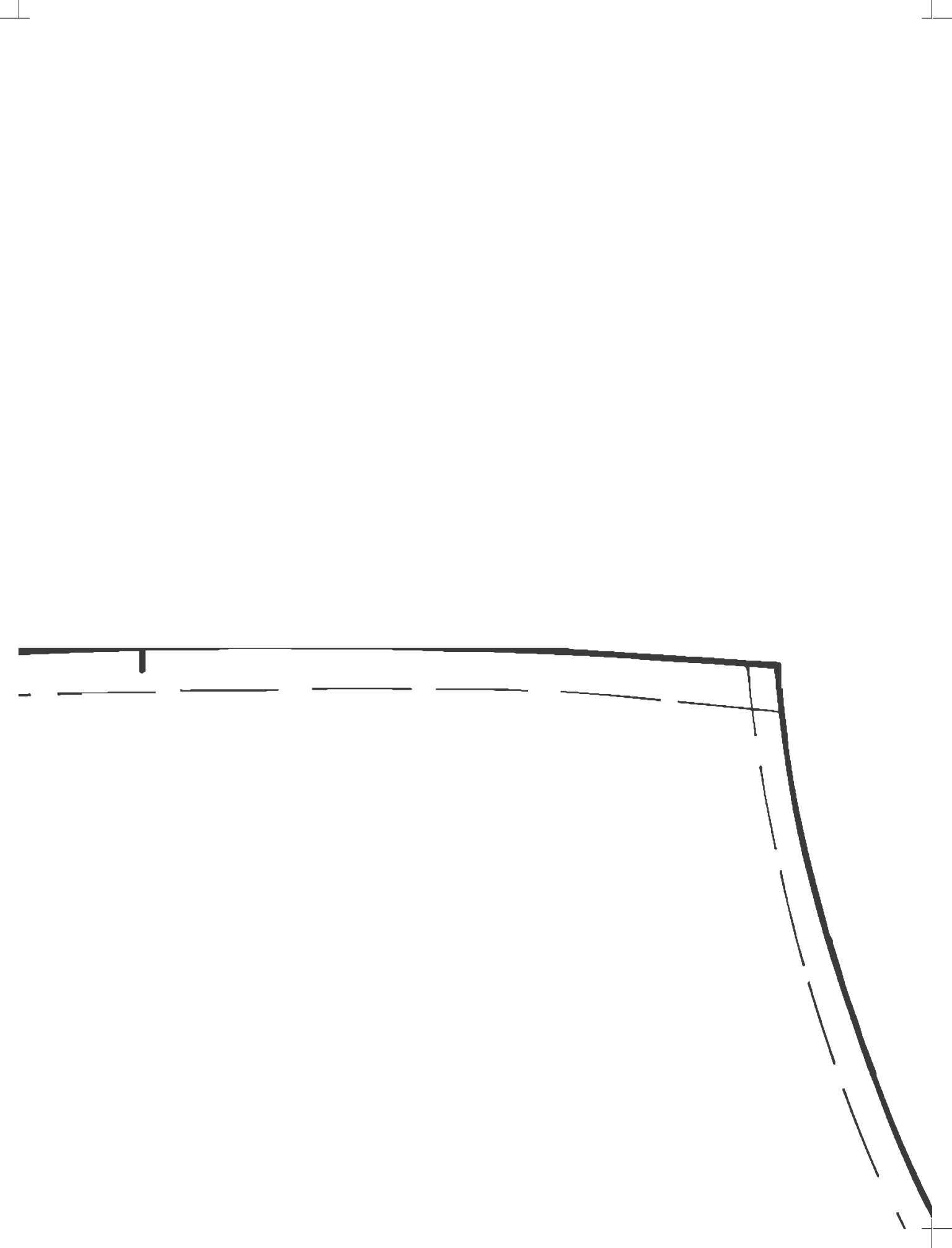
Stitch Line



Jacket Collar

Cut 2

Size 12



**Ladies Skirt
& Jacket
Pattern Parts
Size 12**

SELEE FACING

CUT 2

Size 12

Cut
Stitch

Jack
Side Fr
Cut2

(ONE RIGHT AND ONE

Size

Cut Line

Line

Line

Cut Line

Stitch Line

**et
ront**

**Jacke
Side Ba**

Cut 2

(LEFT)

12

(ONE RIGHT AND ONE LEFT)

Jacket Front Waistband Size 12

Cut2

Stitch Line

e

ne

st

ack

Jacket C
Size 12
Cut 2

EXTENSION

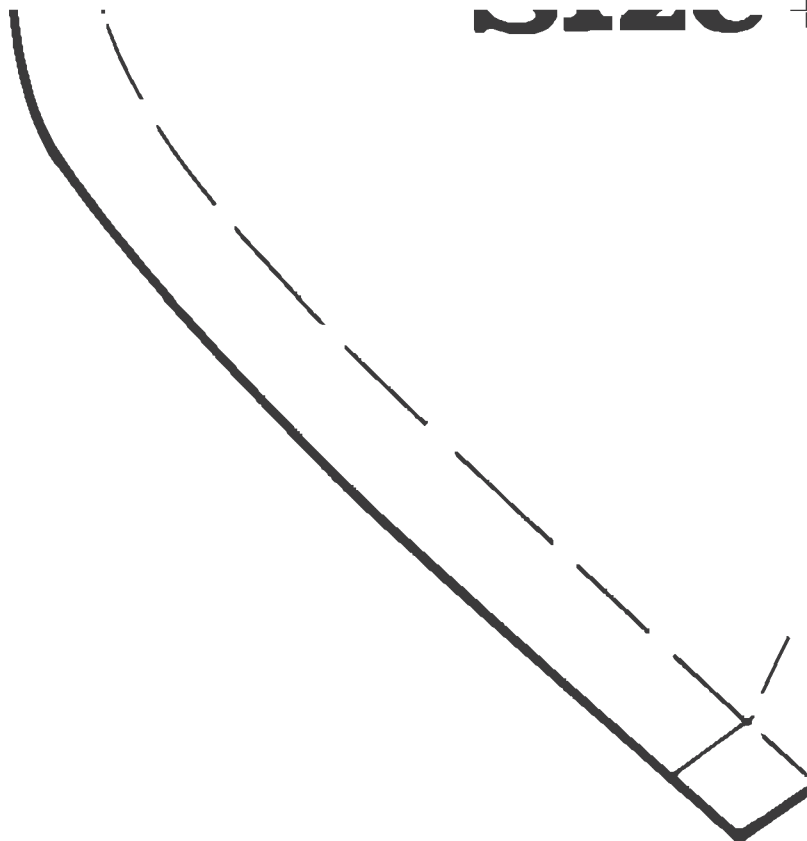


Cuff

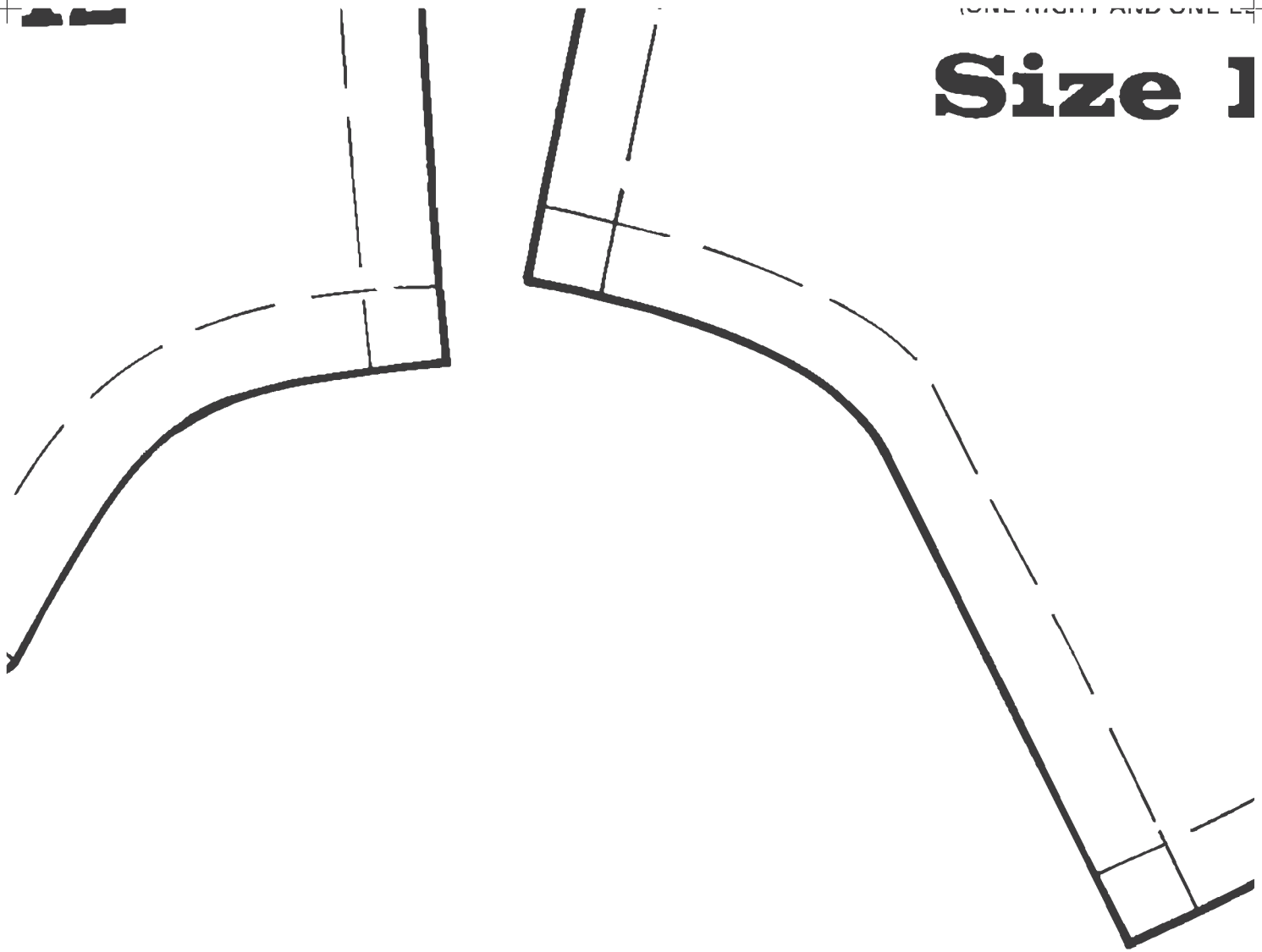
2

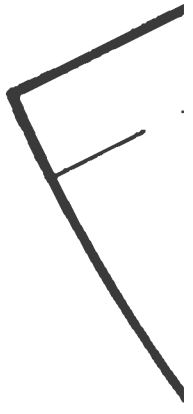
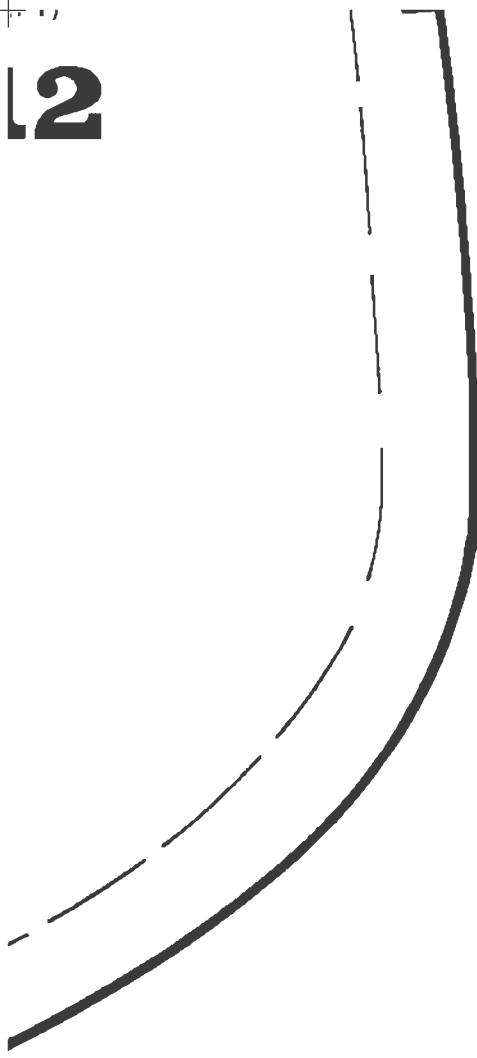
Stitch Line

Cut Line



Size 1

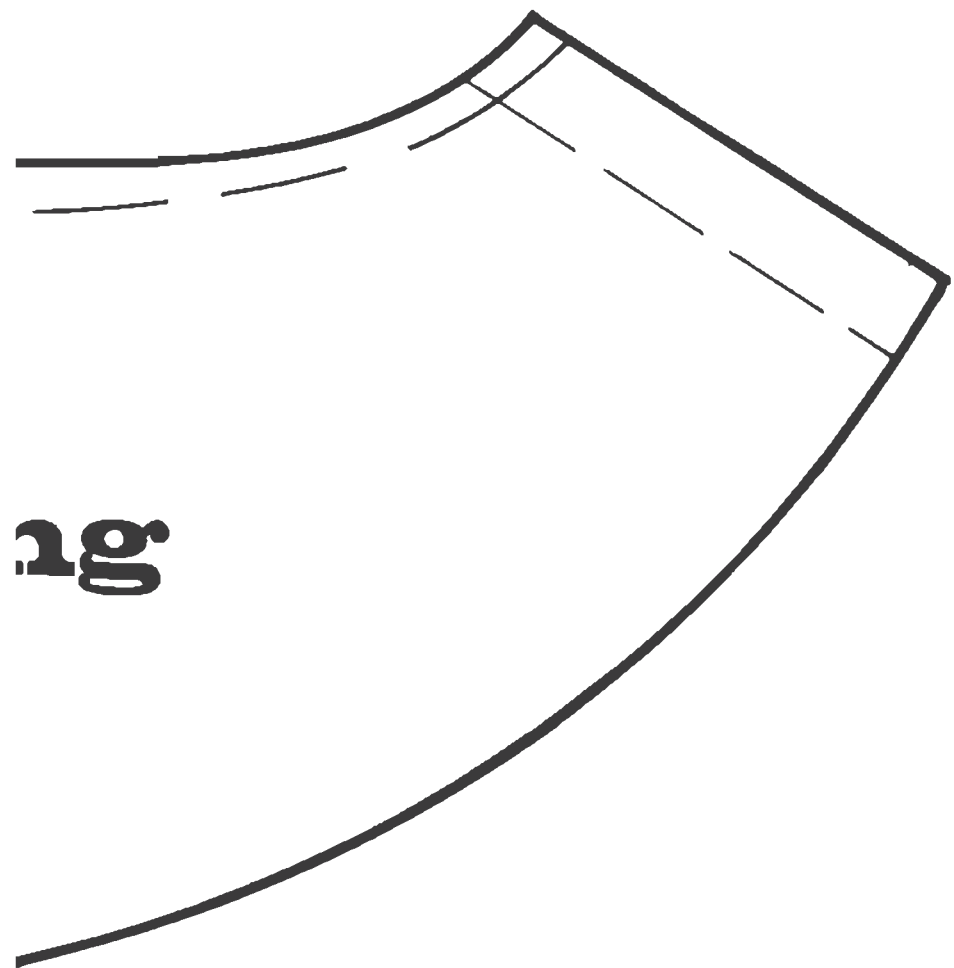






Jacket Back Facer

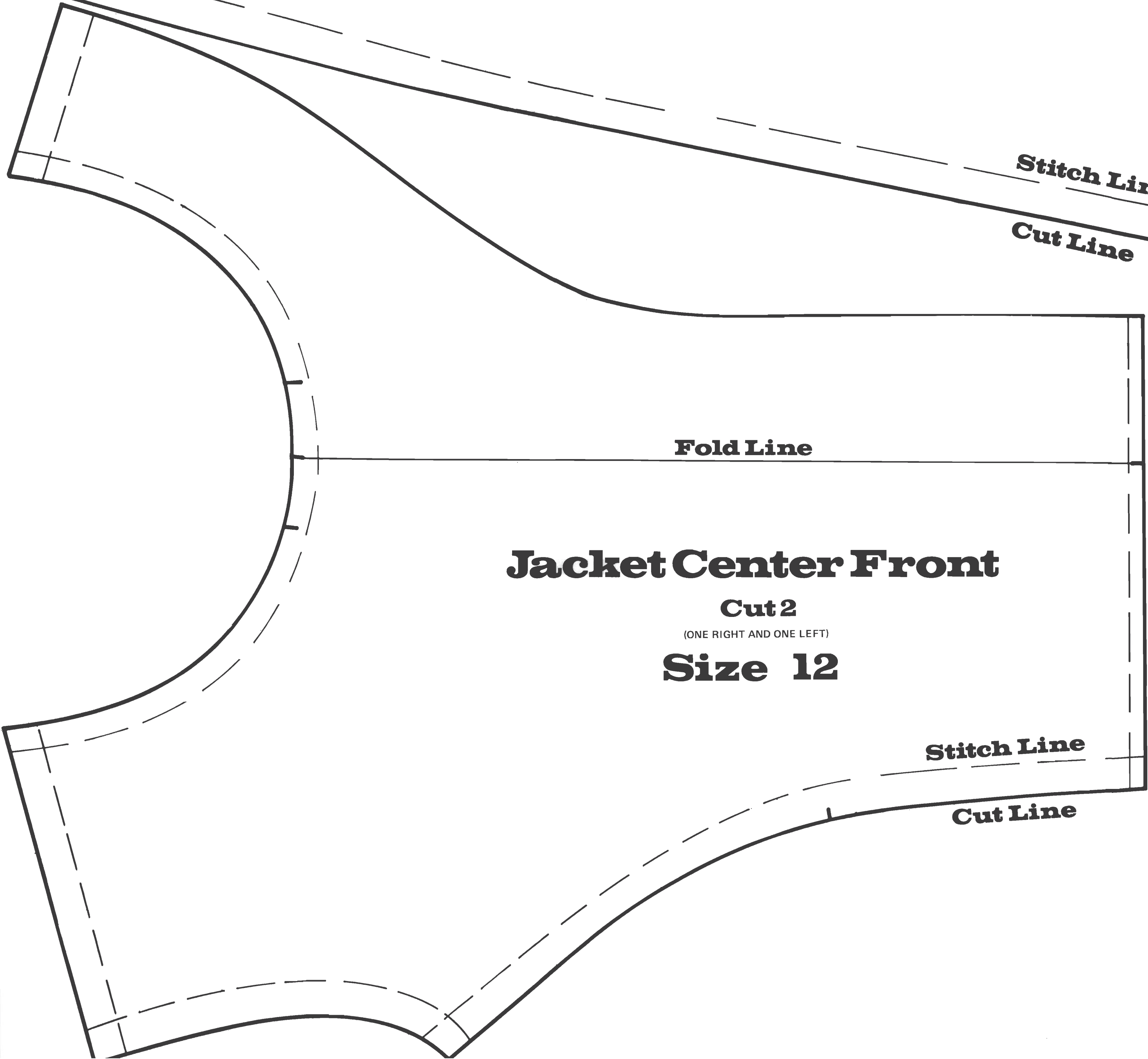
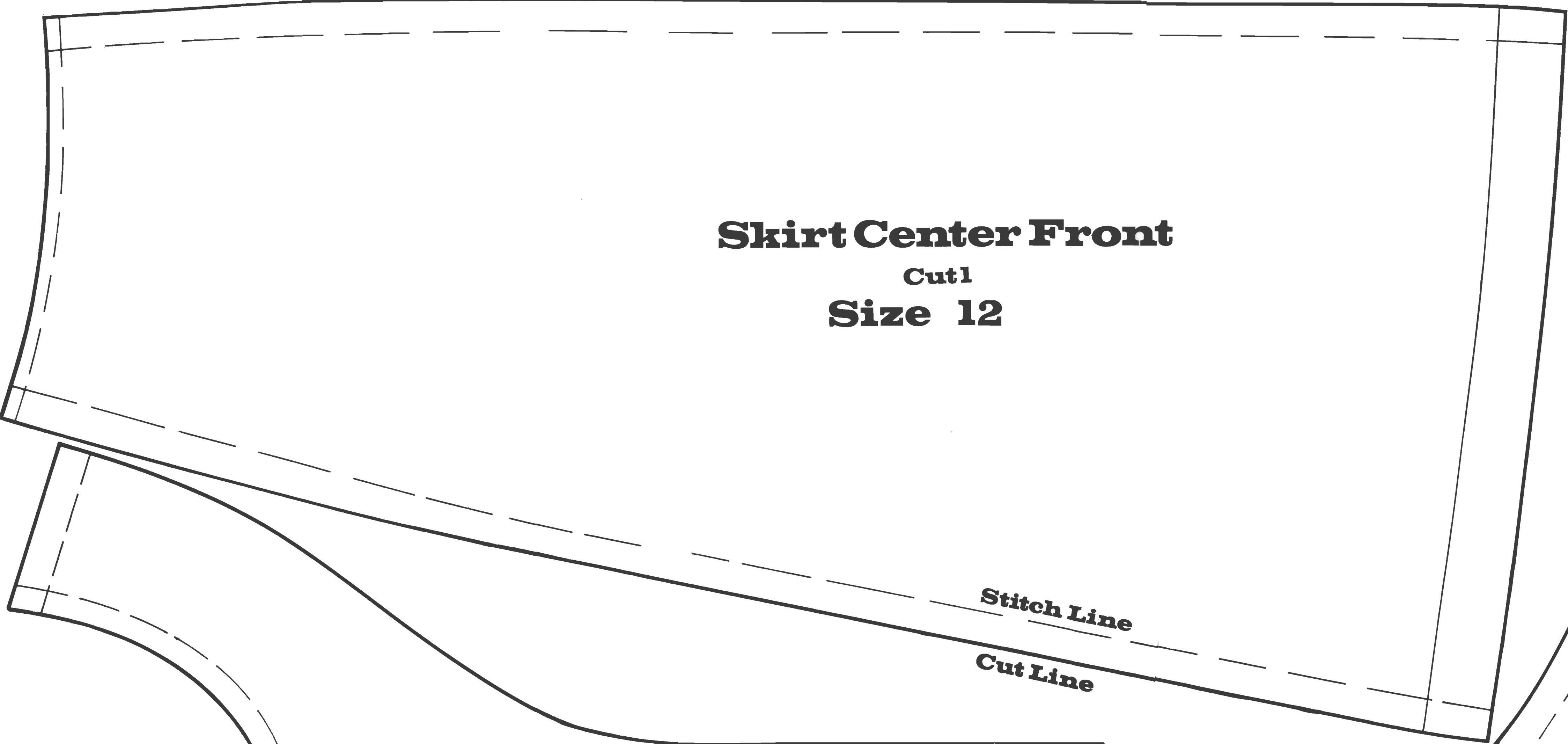
Size 12



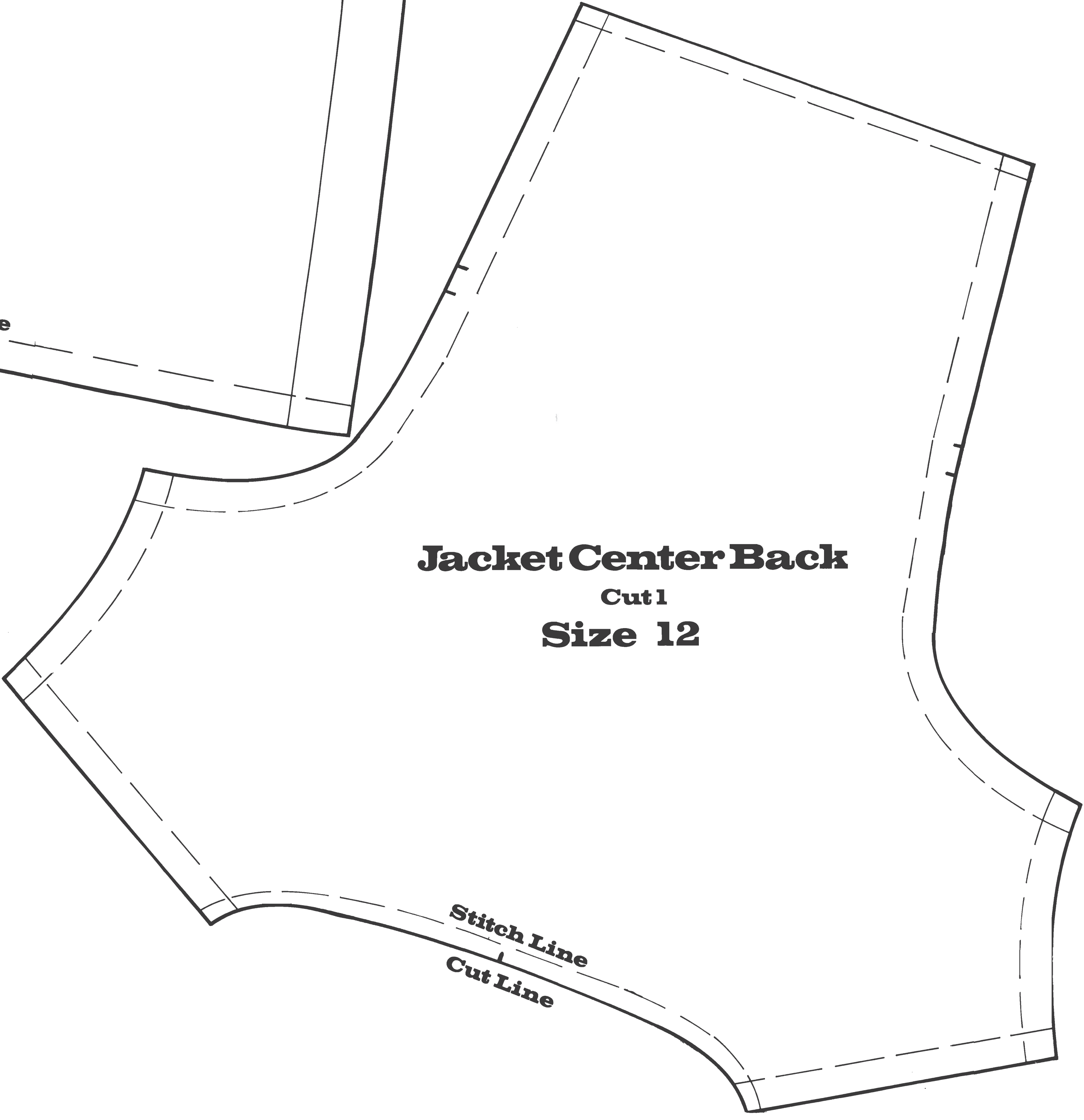
2g

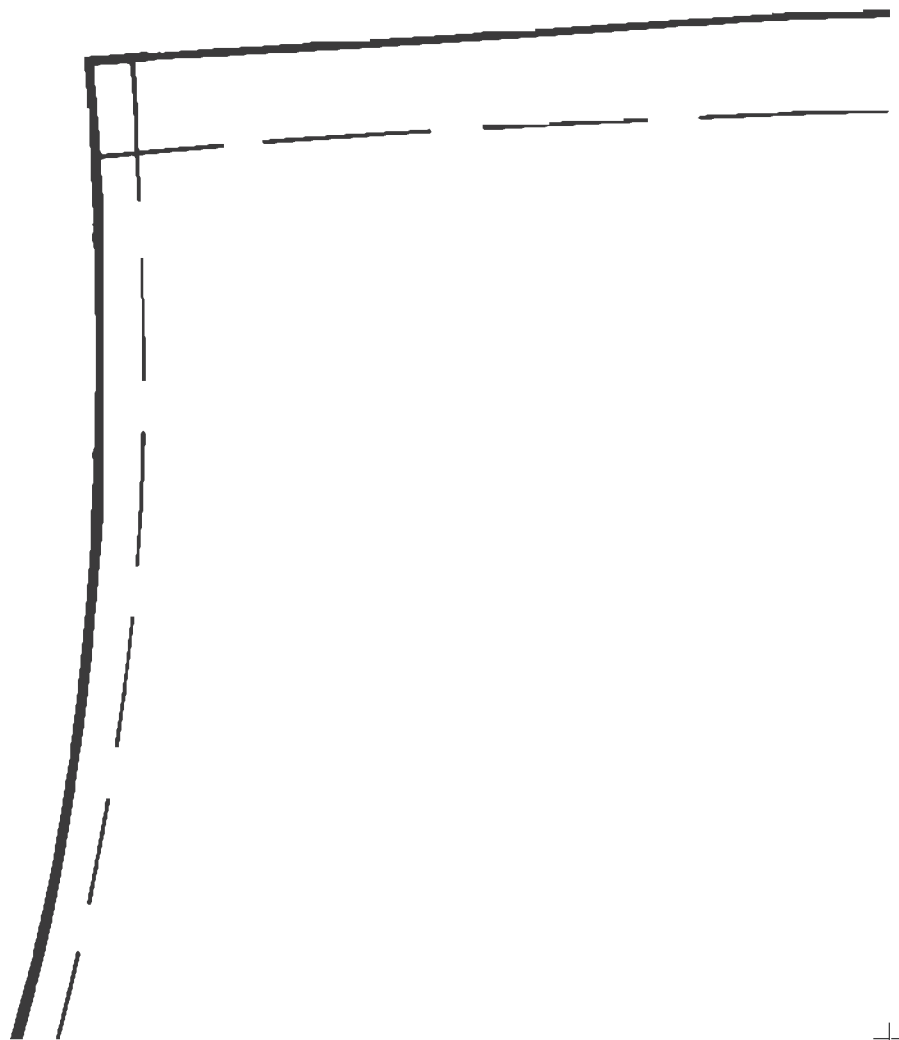
**Ladies Skirt
& Jacket
Pattern Parts
Size 12**

Skirt Center Front
Cut1
Size 12



Jacket Center Back
Cut1
Size 12





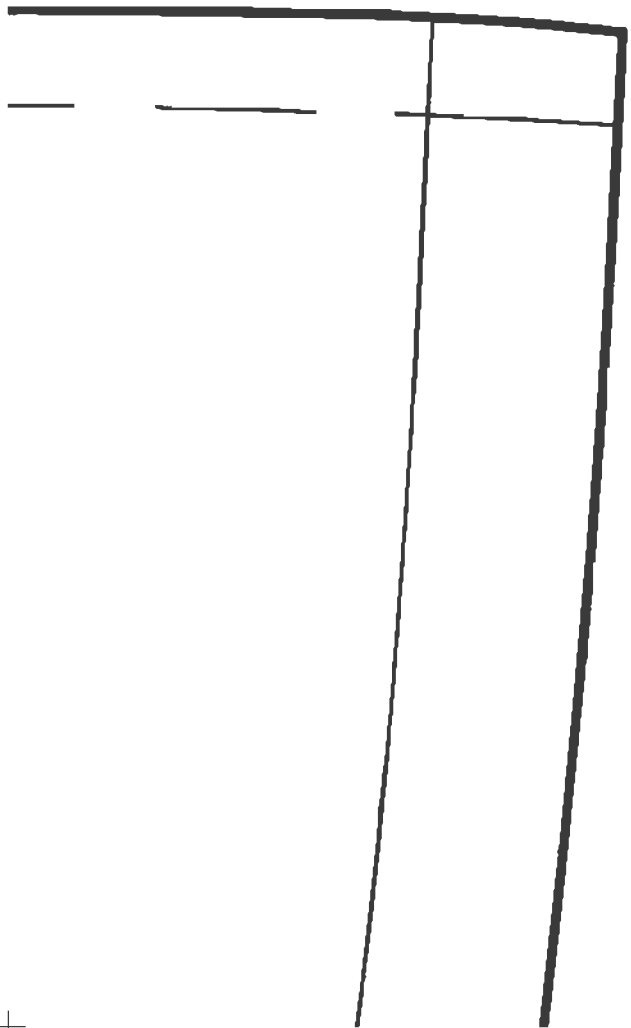
Skirt

9

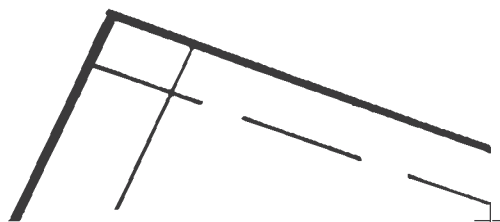
Center Front

Cut 1

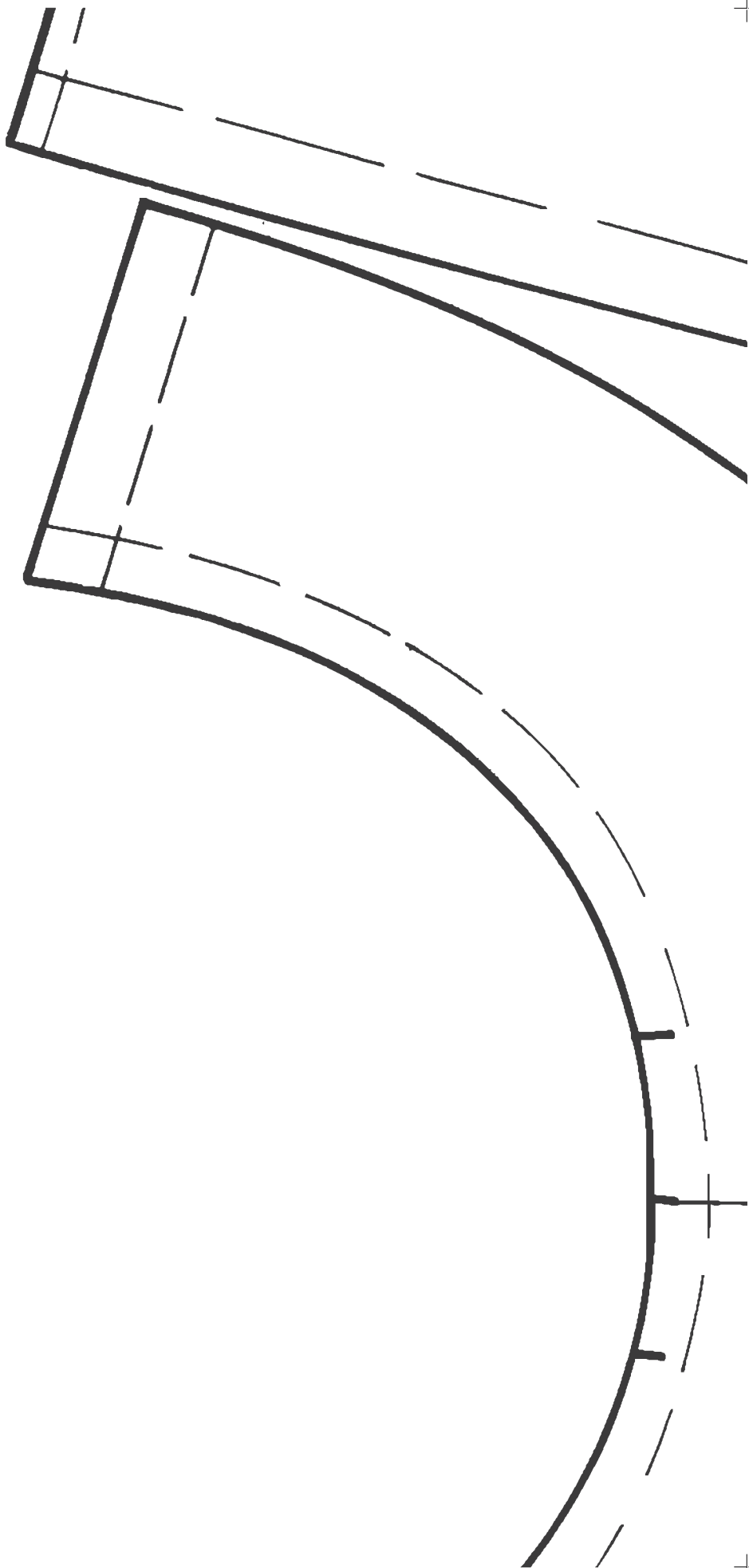
Size 12

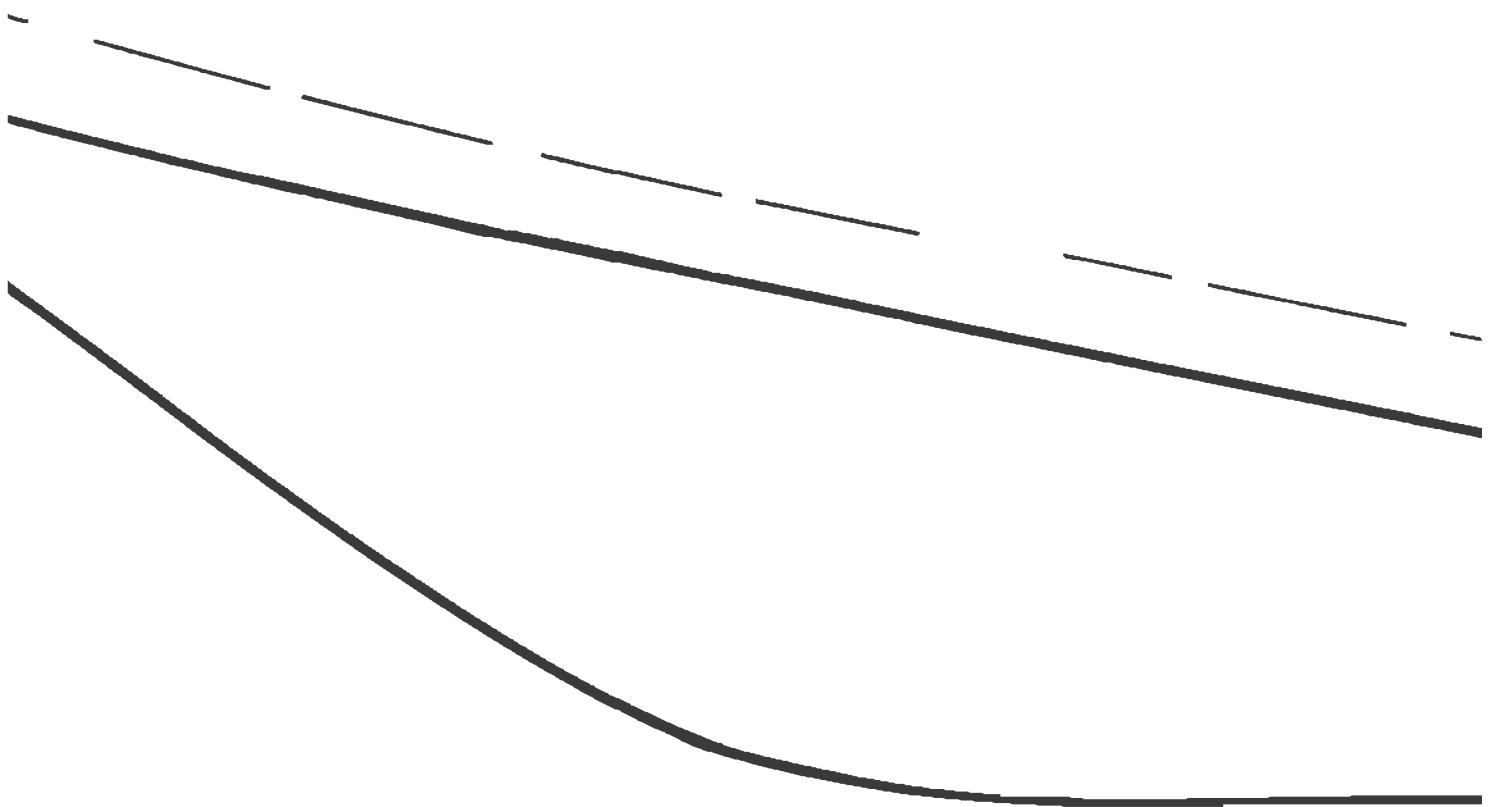


Ladi & Patte S:



es Skirt
Jacket
rn Parts
ize 12





Fold Line

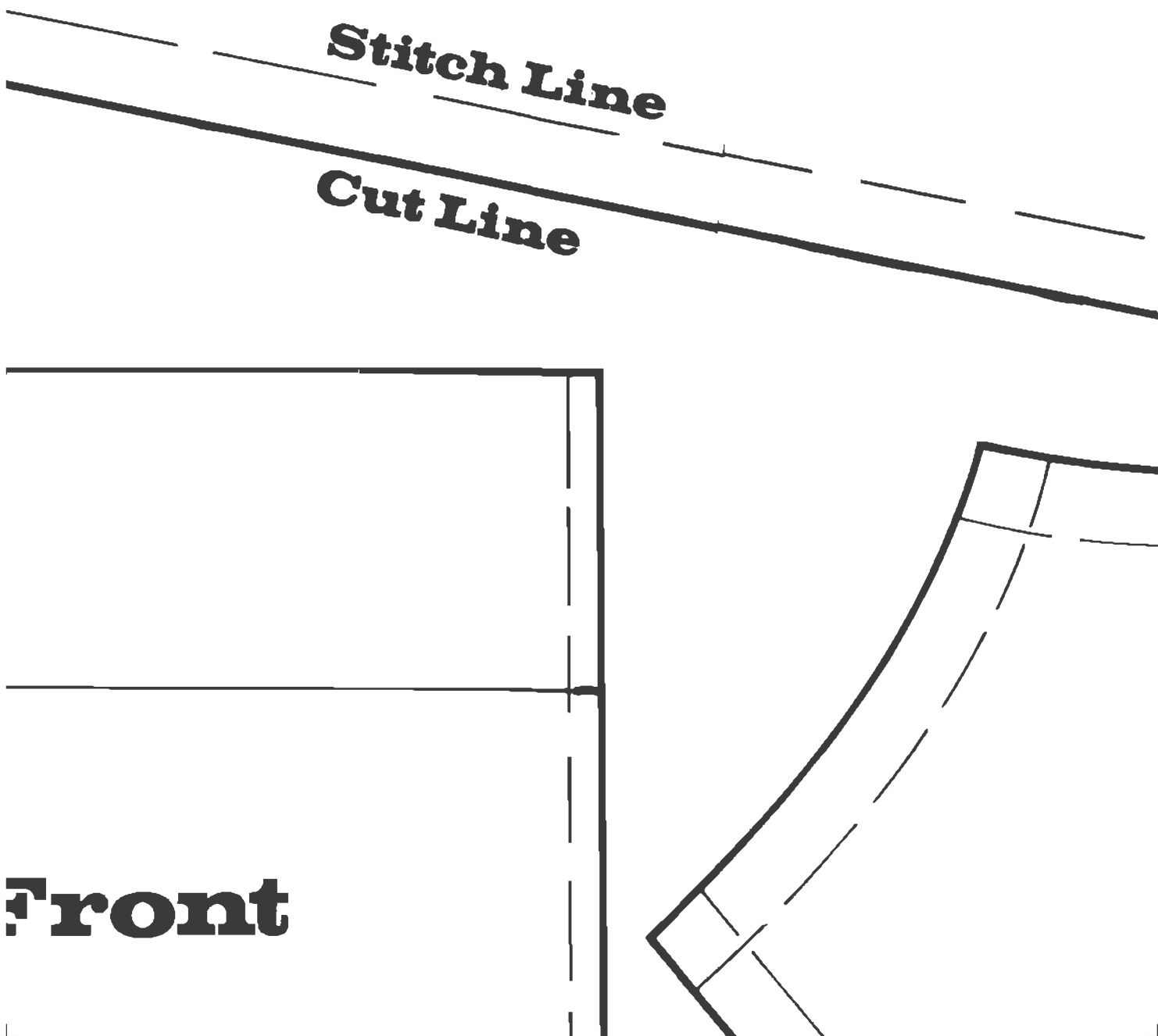
Jacket Center 1

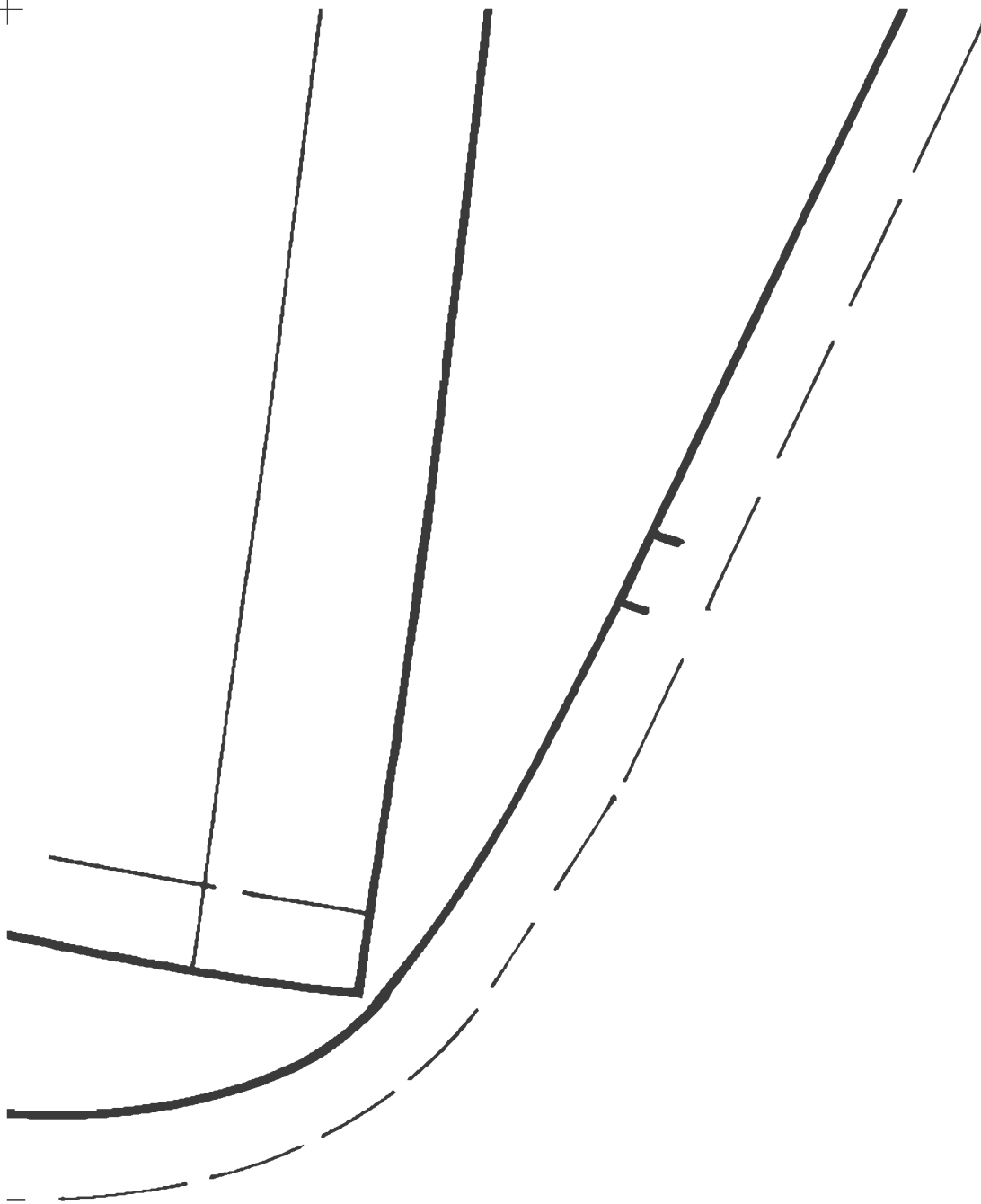
Cut 2

Stitch Line

Cut Line

Front



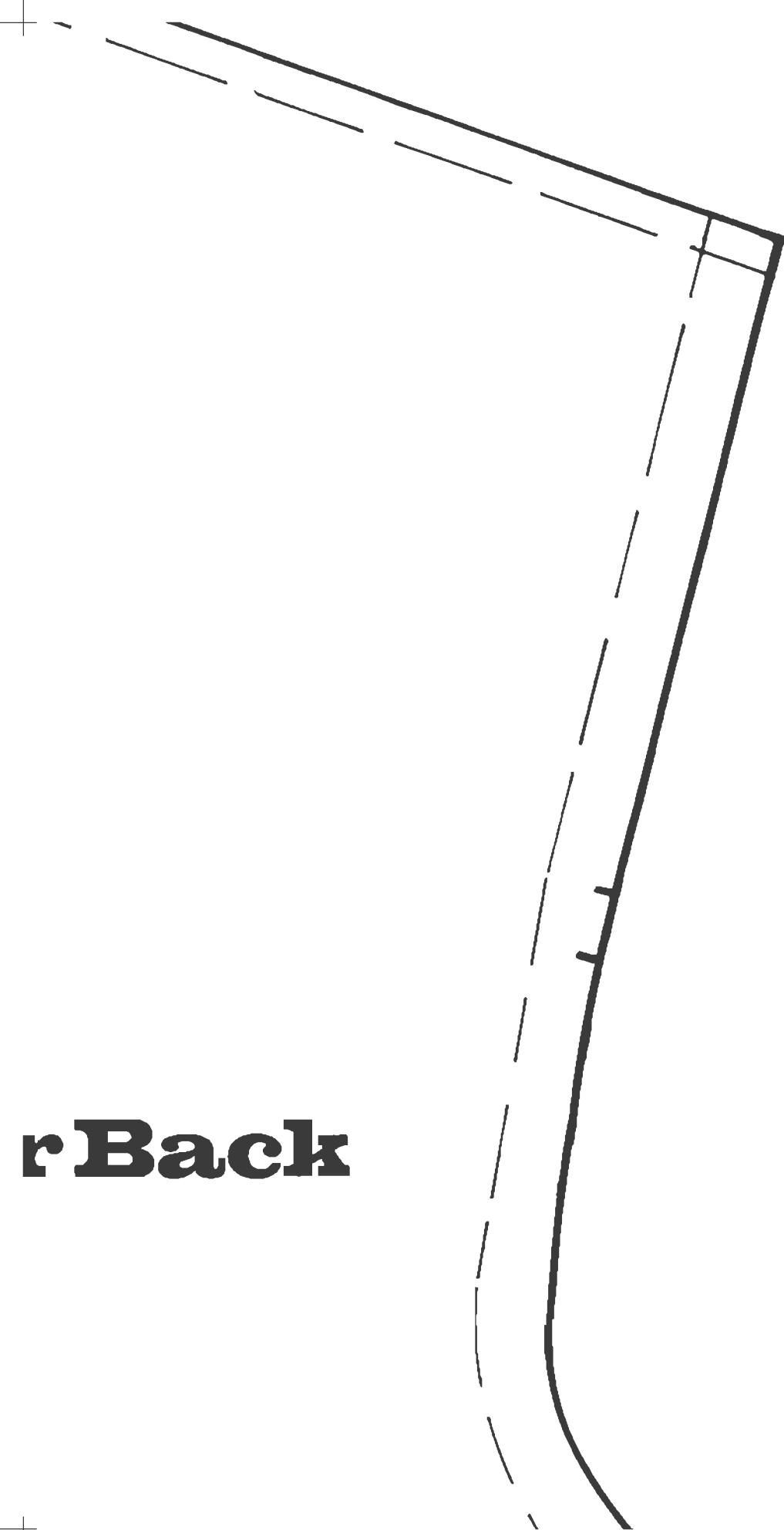


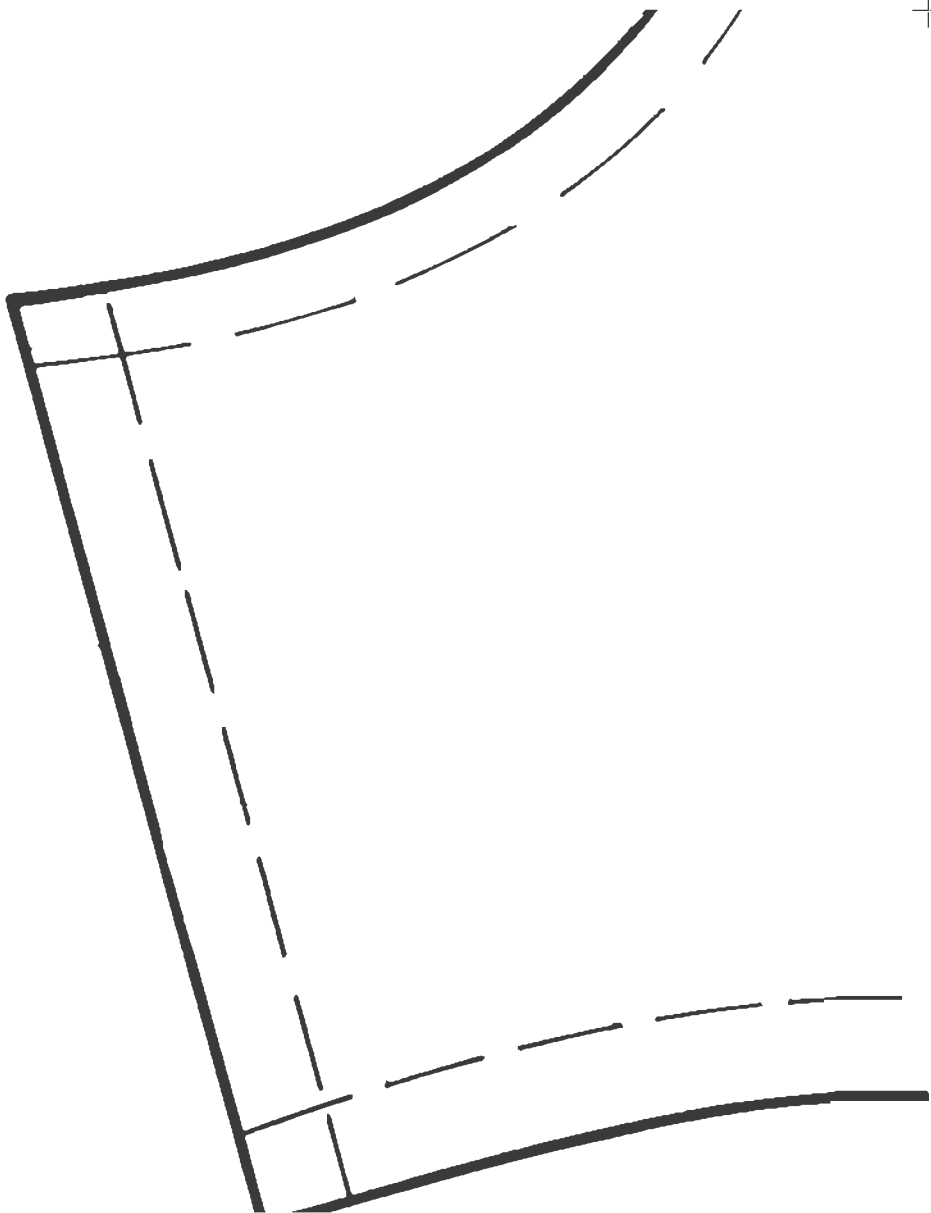
Jacket Center

Cut 1

Size 12

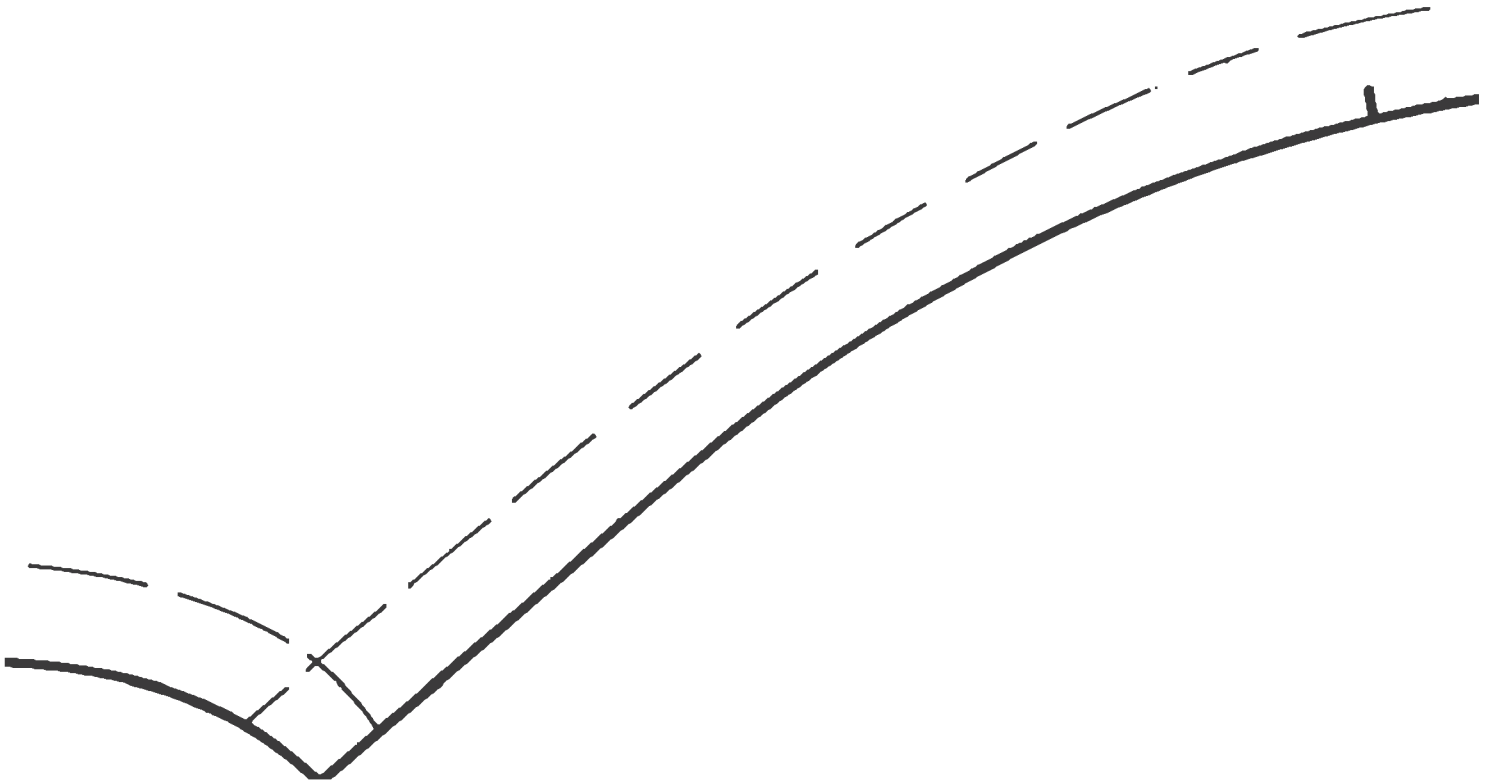
rBack





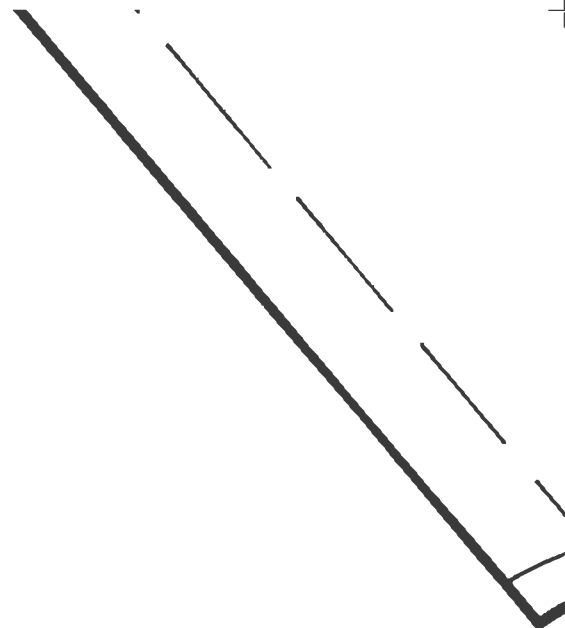
(ONE RIGHT AND ONE LEFT)

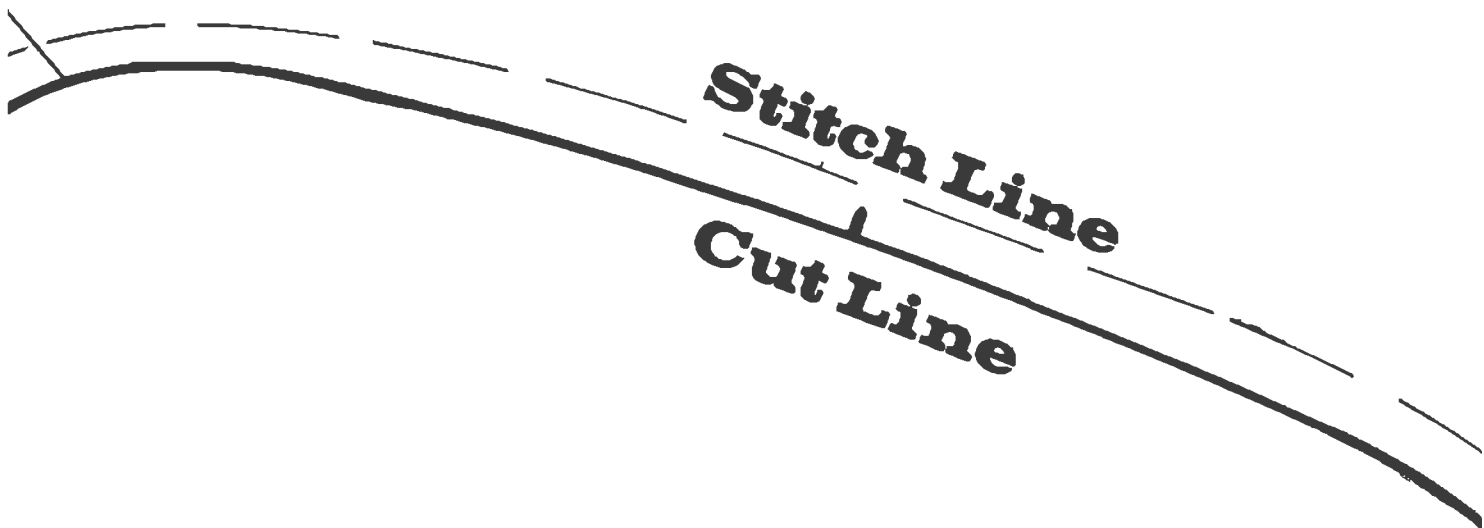
Size 12

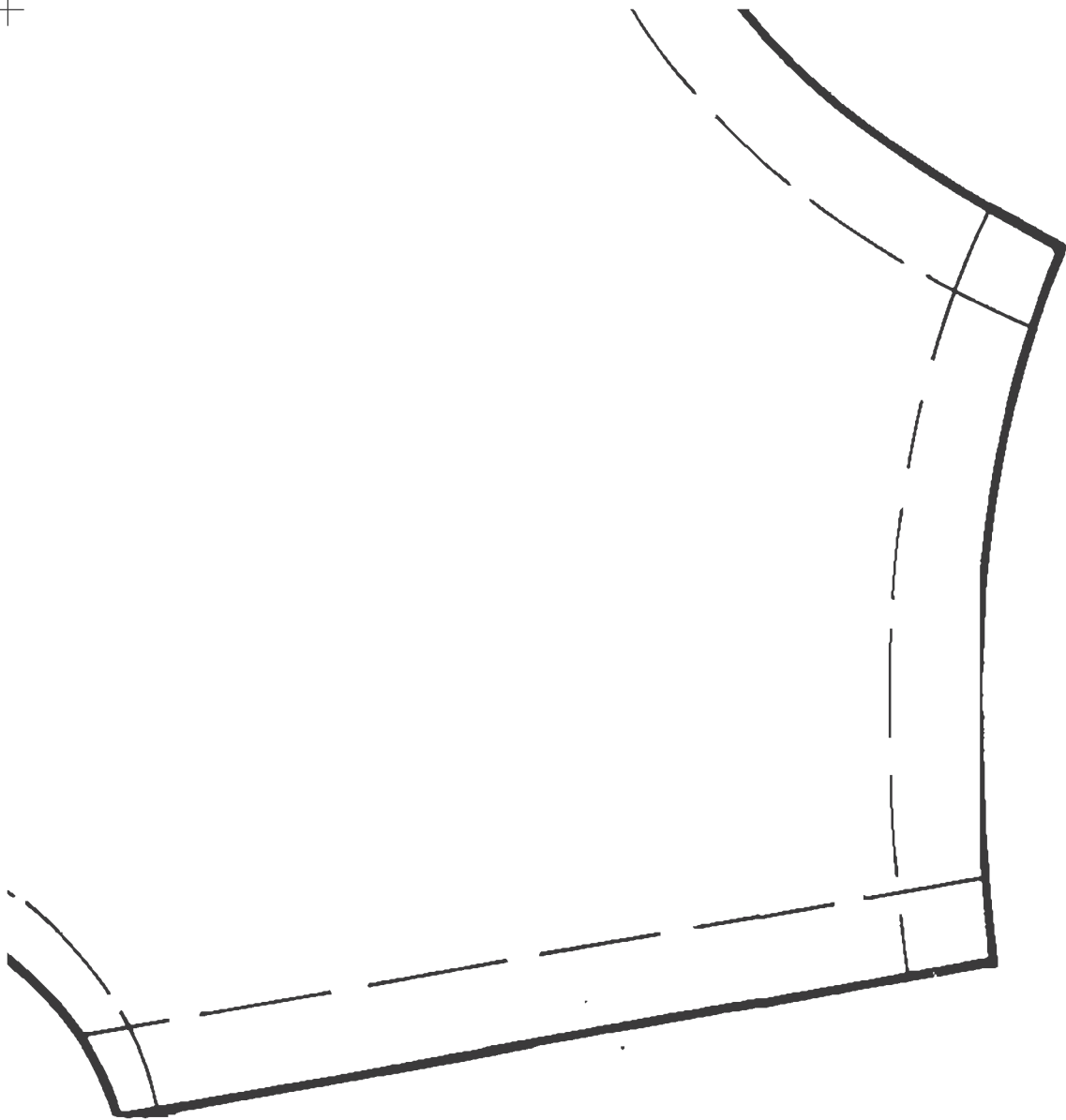


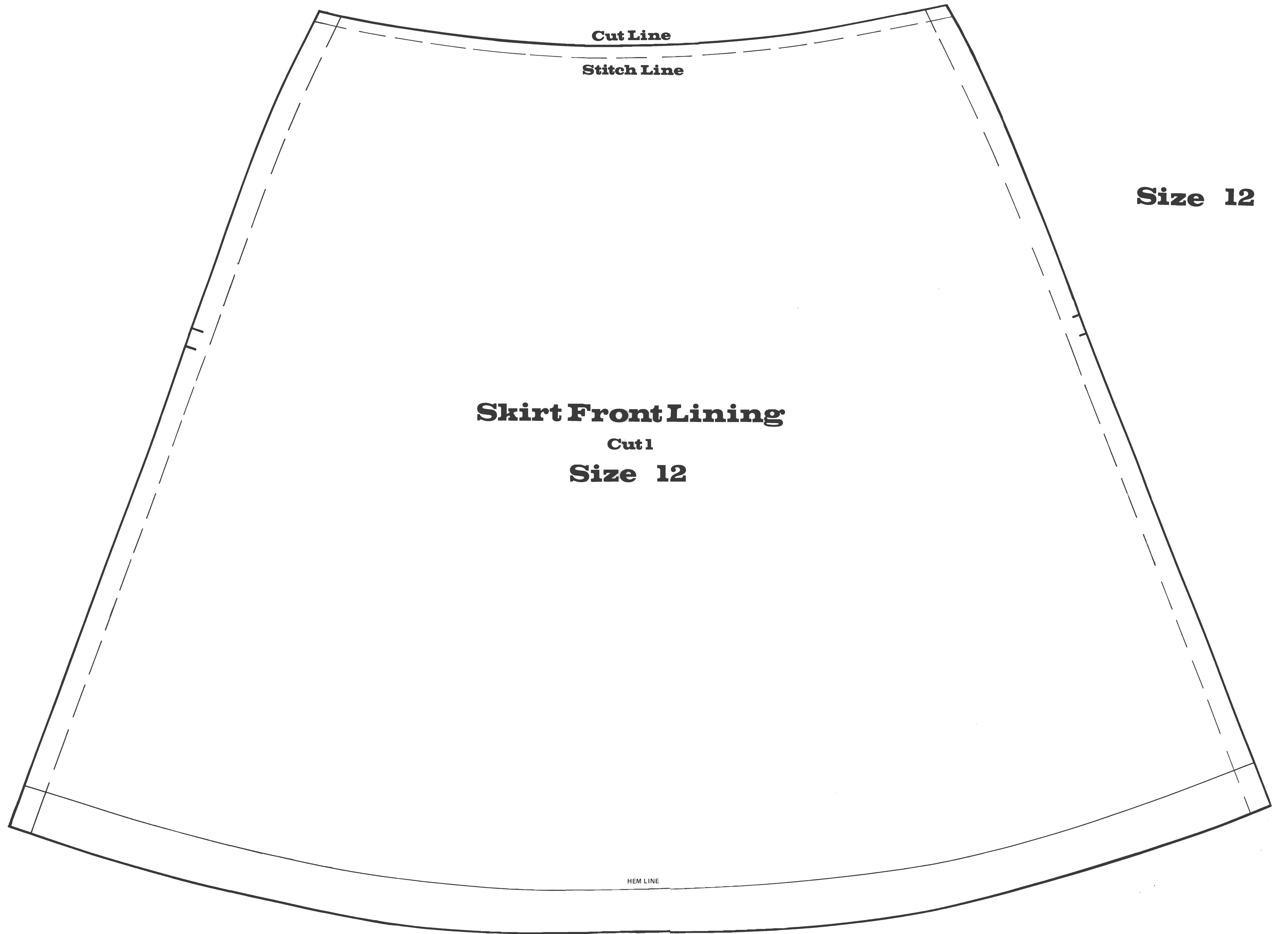
Stitch Line

Cut Line









Cut Line

Stitch Line

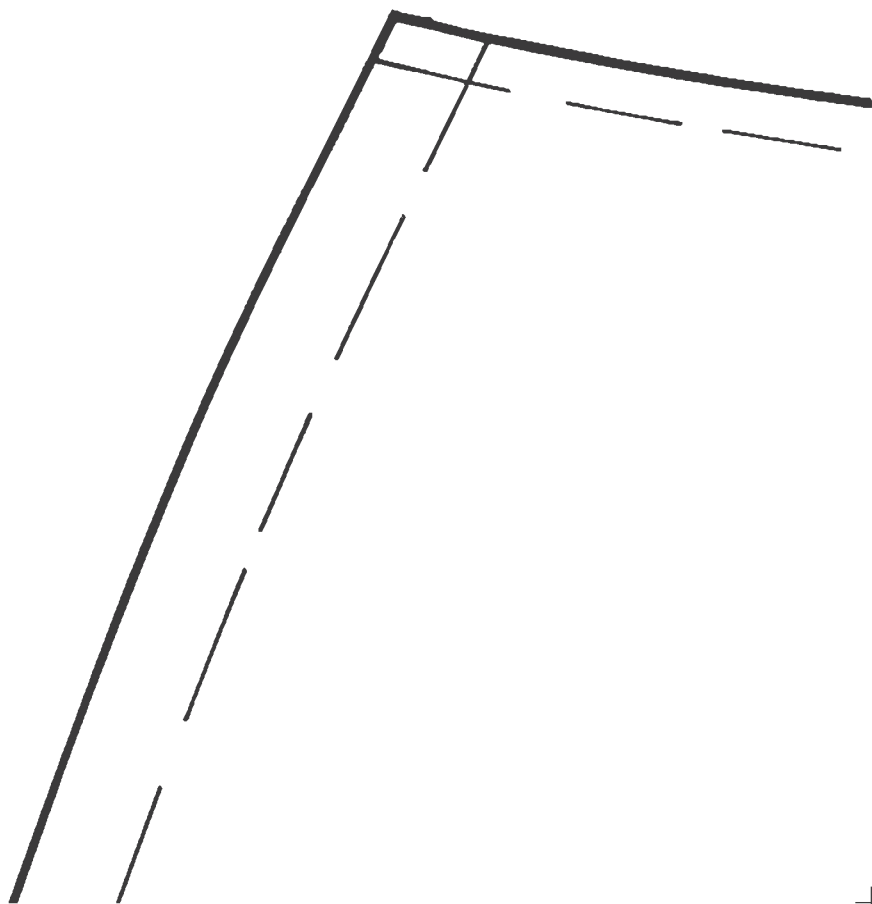
Size 12

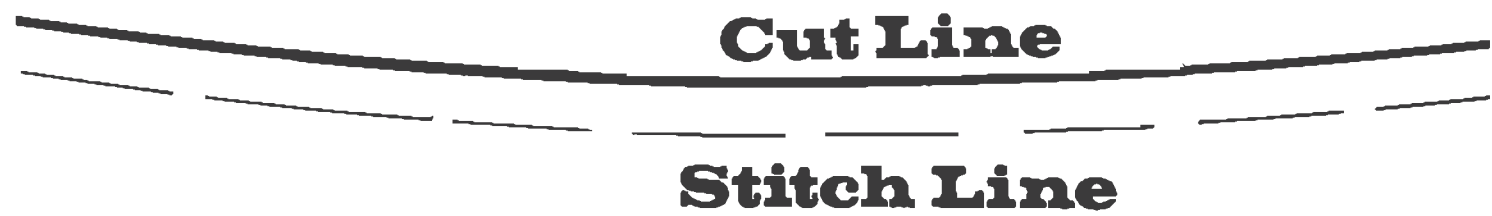
Skirt Front Lining

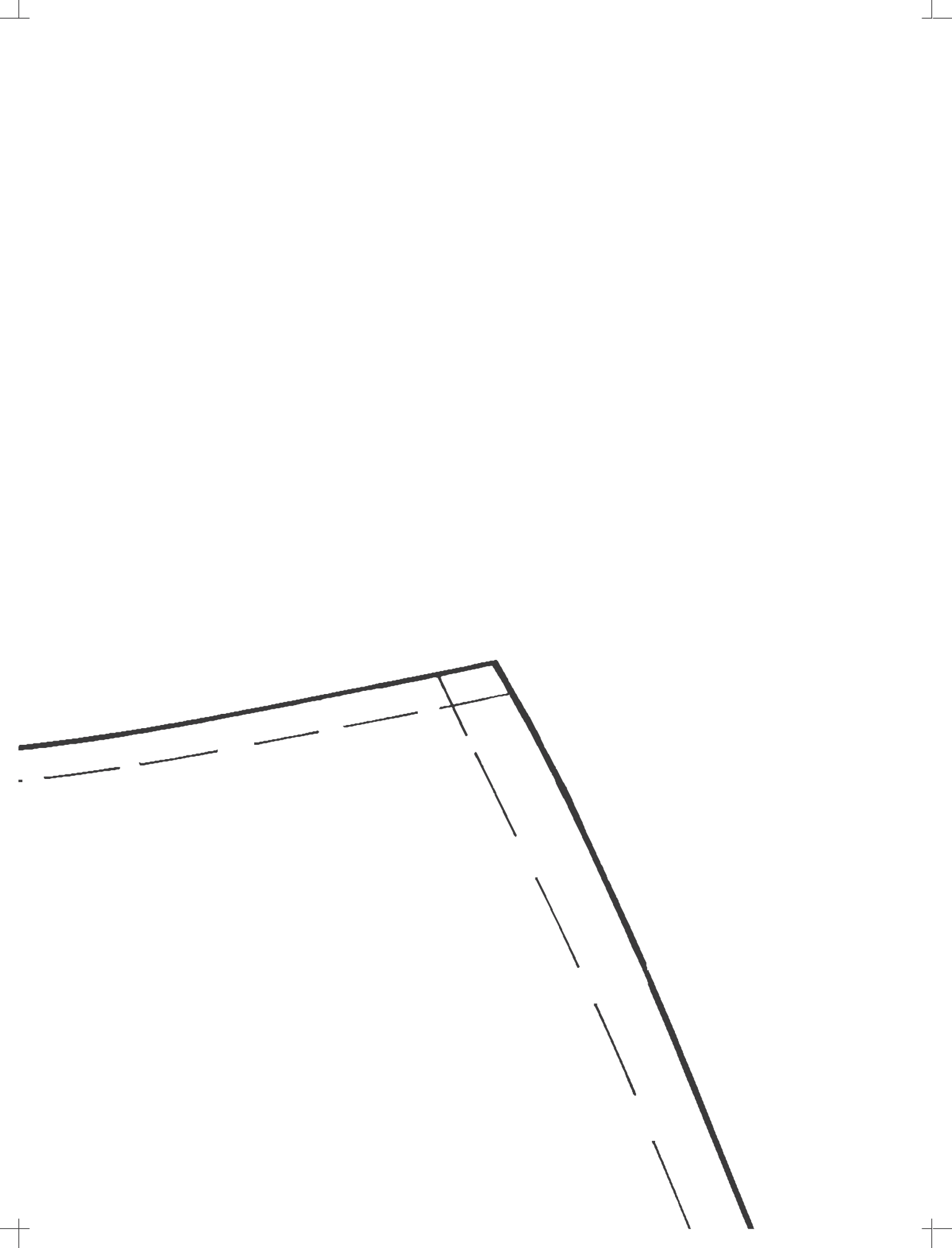
Cut 1

Size 12

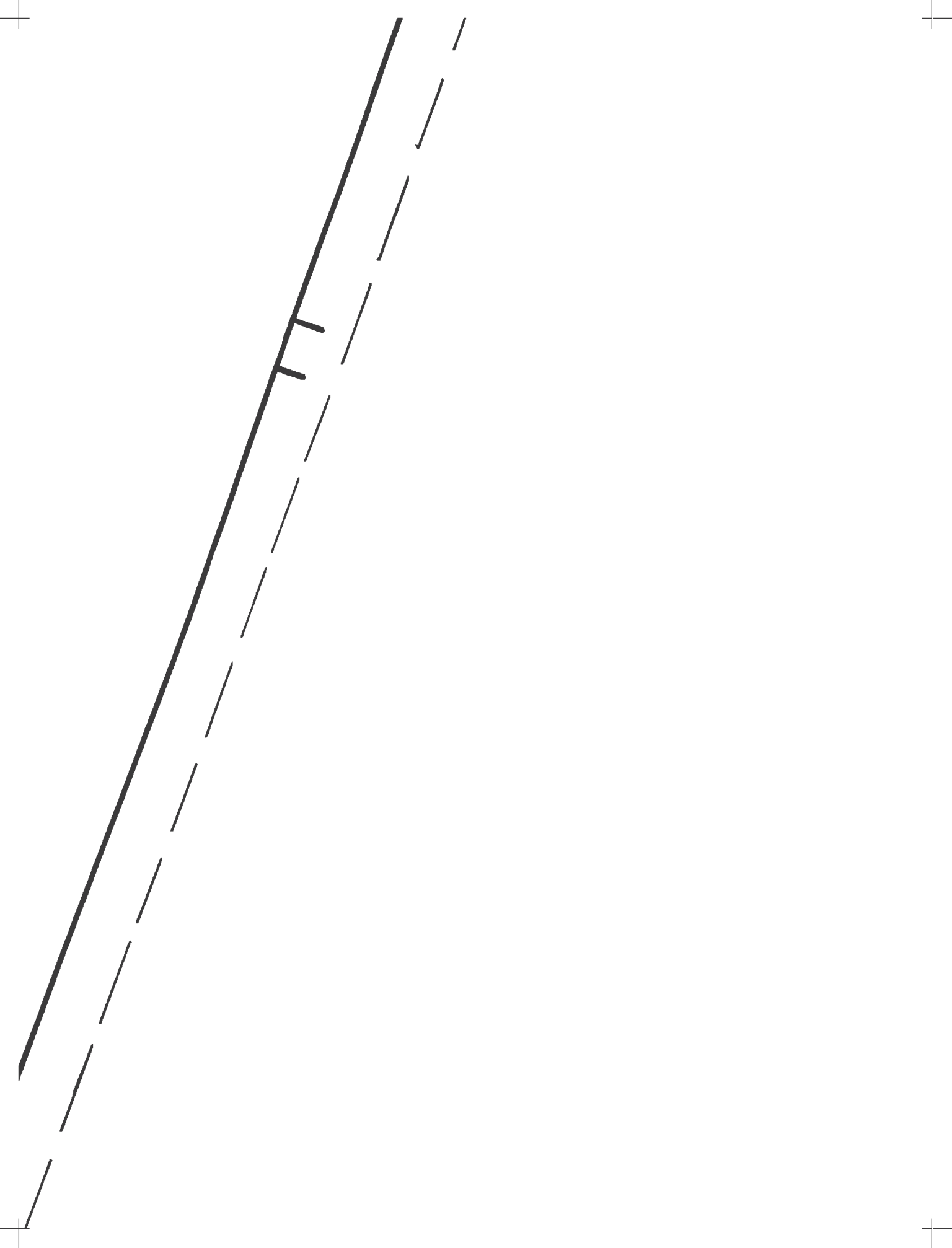
HEM LINE







Size 12

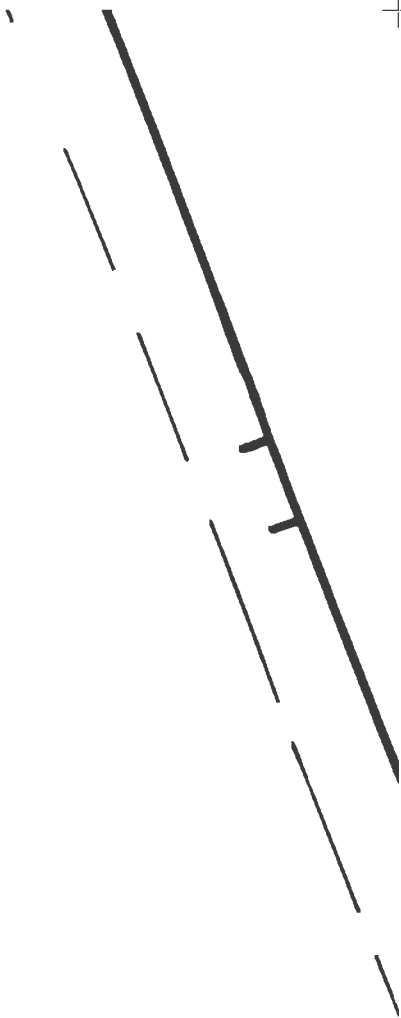


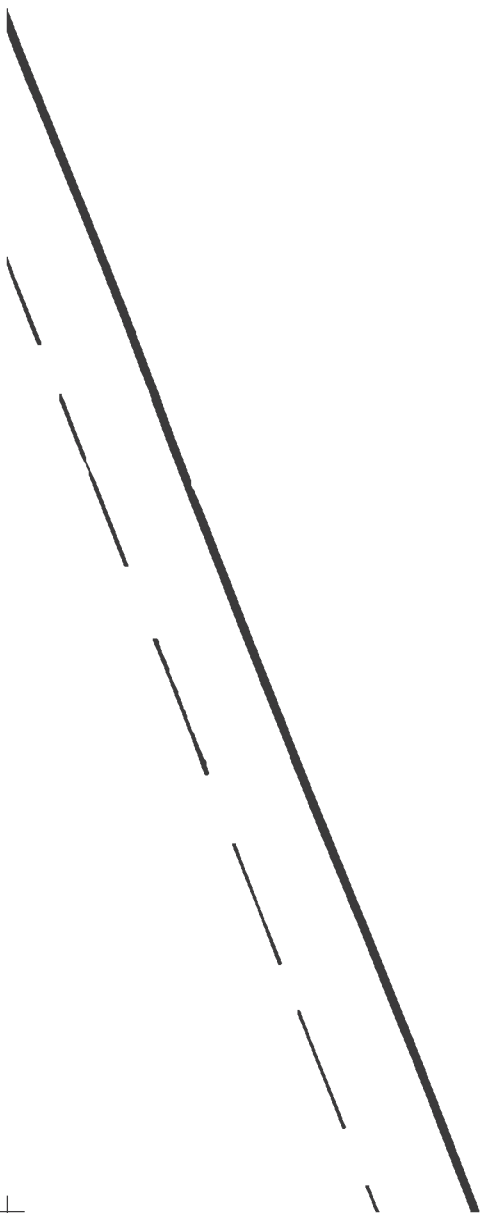
Skirt Front Lining

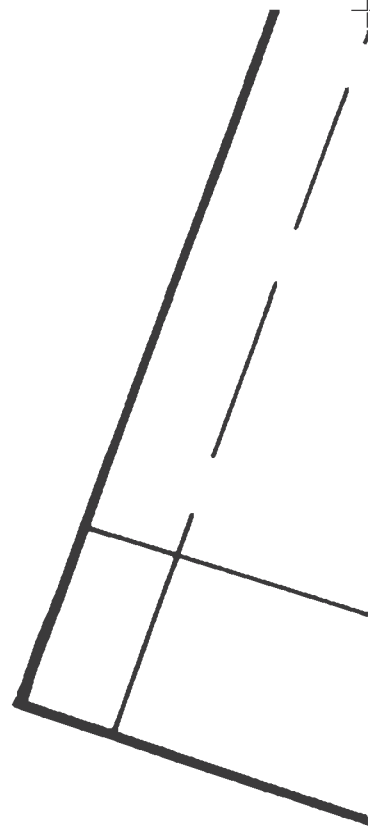
Cut 1

Size 12

၆၇









HEM LINE

